

Waste and Materials Management Study Group

May 7, 2026



Agenda

Welcome, February notes

New members and co-chair

Non-landfill solid waste proposed fee changes

DNR updates

PFAS legislation overview

Battery legislation overview

DNR organics management updates

State food waste legislation overview and Q&A

Co-chair and new members

Study Group Charter

Membership and Structure: The WMM Study Group will:

- Consist of 6 to 12 members representing a range of stakeholder viewpoints
- Consist of members appointed either as individuals or as representatives of an organization
- Be led by two elected chairpersons, with each serving a 2-year term

Overview of proposed changes to review and licensing fees for non-landfill solid waste facilities

Casey Krausensky

Waste and Materials Management Study Group Meeting

**Current Fees in
ch. NR 520
Table 2, Wis.
Adm. Code.**

**TABLE 2
Fee Schedule – All Facilities Except Landfills and Surface Impoundments**

Facility Type	Initial Site & Construction Inspection Fees ¹	Plan Review Fee	Plan Modification or Exemption Request	Construction Documentation Review Fee	Annual License Fee
Beneficial Use	\$550	\$550	\$550	\$550	N/A
Collection and Transportation	N/A	N/A	N/A	N/A	\$110
Each Additional Truck	N/A	N/A	N/A	N/A	\$33
Transfer Facility					
Exempt (up to 50 tons/day)	\$550	N/A	N/A	N/A	\$165
Small (>50 to 100 tons/day)	\$550	\$660	\$330	\$330	\$165
Large (>100 tons/day)	\$550	\$1,650	\$550	\$660	\$550
Processing Facility	\$550	\$3,300	\$1,100	\$1,100	\$550
Storage Facility					
Exempt (up to 50 tons/day)	\$550	N/A	N/A	N/A	\$550
Non-Exempt (>50 tons/day)	\$550	\$1,650	\$550	\$660	\$550
Incineration Facility	\$550	\$7,700	\$1,650	\$1,100	\$7,700
Air Curtain Destructor	\$550	\$330	\$330	\$165	\$165
Woodburning Facility	\$550	\$165	\$165	N/A	\$165
Municipal Waste Combustor					
Small	\$550	\$1,650	\$550	\$660	\$660
Large (>10 tons/day)	\$550	\$7,700	\$1,650	\$1,100	\$7,700
Landspreading Facility					
Exempt	\$550	\$660	\$550	N/A	N/A
Non-Exempt	\$550	\$1,650	\$550	N/A	N/A
Infectious Waste Transport	N/A	N/A	N/A	N/A	\$275
Each Additional Truck	N/A	N/A	N/A	N/A	\$22
Infect. Waste Annual Report	N/A	N/A	N/A	N/A	\$55 ²
Medical Waste Reduction Plan	N/A	\$660 ³	\$550	N/A	N/A
Low Hazard Exemption under s. NR 500.08 (3m) and (4) or s. 289.43 (8), Stats.	N/A	\$2,000	N/A	N/A	N/A

Plan review methodology

Primarily

- Staff survey of time spent
- Averaged and multiplied by average NLF salary and fringe

When staff experience not available (MSW combustion, incinerator, med waste reduction plan)

- Bureau of Labor inflation from last update (2006)

Proposed
Plan Review
Fee Table

	Initial Site Inspection			Plan of Operation Review			Plan Modification Review, Exemption Review, or Concurrence Review			Construction Documentation Review Fee
	Pre 2029	2029	2030	Pre 2029	2029	2030	Pre 2029	2029	2030	
Beneficial Use	\$550			\$550			\$550			\$550
Transfer Facility (≤ 50 tons/day)	\$550	\$725	\$900	NA			NA			NA
Transfer Facility (>50 tons/day)				\$1,650	\$1,650	\$1,650	\$550	\$650	\$750	\$660
Processing Facility				\$3,300	\$3,300	\$3,300	\$1,100	\$1,400	\$1,700	\$1,100
Infectious Waste Treatment Facility				\$3,300	\$4,400	\$5,500	\$1,100	\$1,950	\$2,800	\$1,100
Incineration Facility				\$7,700	\$10,100	\$12,500	\$1,650	\$2,175	\$2,700	\$1,100
Air Curtain Destruction Facility				\$330	\$715	\$1,100	\$330	\$565	\$800	\$165
Woodburning Facility				\$165	\$633	\$1,100	\$165	\$483	\$800	\$165
Composting Facility				\$0	\$0	\$0	\$0	\$0	\$0	\$0
Municipal Solid Waste Combustion Facility				\$7,700	\$10,100	\$12,500	\$1,650	\$2,175	\$2,700	\$1,100
Landspreading Facility - Exempt				\$660	\$1,080	\$1,500	\$550	\$975	\$1,400	NA
Landspreading Facility - Non-exempt				\$1,650	\$2,325	\$3,000	\$550	\$1,425	\$2,300	NA
Medical Waste Reduction Plan	NA			\$660	\$880	\$1,100	\$550	\$725	\$900	NA
Low Hazard Exemption under s. NR 500.08 (3m) or (4), 500.085 or s. 289.43(8), Stats.	NA			\$2,000			\$1,000			NA

Proposed Plan Review Fee Table - General

- Beneficial Use fees – unchanged
- Storage facility category removed (fees same as transfer)
- Infectious Waste Treatment separated from Processing
- Construction documentation fees – unchanged
- Low Hazard Exemption fee – unchanged (\$2,000)
- Low Hazard Exemption concurrence fee added (\$1,000)
- < 50 TPD transfer (and storage) still plan review exempt
- Compost facility non ISI fees still waived
- ISI from \$550 to \$900
- Expedited plan review category, \$300 for reviews that take ≤ 5 hours

**Proposed
Plan
Review
Fee Table
- Focus**

	Plan of <u>Operation</u> Review			Plan Modification Review, Exemption Review, or Concurrence Review		
	Pre 2029	2029	Post 2029	Pre 2029	2029	Post 2029
Transfer Facility (>50 tons/day)	\$1,650			\$550	\$650	\$750
Processing Facility	\$3,300			\$1,100	\$1,400	\$1,700
Infectious Waste Treatment Facility	\$3,300	\$4,400	\$5,500	\$1,100	\$1,950	\$2,800
Incineration Facility	\$7,700	\$10,100	\$12,500	\$1,650	\$2,175	\$2,700
Air Curtain Destruction Facility	\$330	\$715	\$1,100	\$330	\$565	\$800
Woodburning Facility	\$165	\$633	\$1,100	\$165	\$483	\$800
Municipal Solid Waste Combustion Facility	\$7,700	\$10,100	\$12,500	\$1,650	\$2,175	\$2,700
Landspreading Facility - Exempt	\$660	\$1,080	\$1,500	\$550	\$975	\$1,400
Landspreading Facility - Non-exempt	\$1,650	\$2,325	\$3,000	\$550	\$1,425	\$2,300
Medical Waste Reduction Plan	\$660	\$880	\$1,100	\$550	\$725	\$900

License methodology

Primarily

- Base of \$275 for customer services, process and compliance time as well as database and software time needed for maintaining and providing records.
- Inspection cost added.
 - Base rate of \$900 in staff costs for an inspection (staff survey) multiplied by minimum inspection frequency (\$300/ year for an inspection frequency of every 3 years)
- Annual report review costs incorporated (\$200 per staff survey), if required

MSW combustion & incinerator

- Technical nature and training needs, op cert program, public interest
- Bureau of Labor inflation from last update (2006)

Proposed License Fee Table - General

- Infectious Waste Annual Report Review Fee increased from \$55 to \$100
- Infectious waste treatment separated from processing
- Compost facilities continue to be fee exempt

Proposed License Fee Review Table

Facility Type	Pre License Year 2030 Fee	License Year 2030 Fee	Post License Year 2030 Fee
Solid Waste Transportation Services -- Original License	\$110	\$193	\$275
Solid Waste Transportation Services – Each Additional Truck	\$33	\$42	\$50
Infectious Waste Transportation Services -- Original License	\$275		
Infectious Waste Transportation Services – Each Additional Truck	\$22	\$36	\$50
Transfer Facility (≤ 50 tons/day)	\$165	\$310	\$455
Transfer Facility (>50 tons/day)	\$550	\$563	\$575
Processing Facility	\$550	\$963	\$1,375
Infectious Waste Treatment Facility	\$550	\$1,513	\$2,475
Incineration Facility	\$7,700	\$10,100	\$12,500
Air Curtain Destruction Facility	\$165	\$310	\$455
Woodburning Facility	\$165	\$310	\$455
Composting Facility	\$0	\$0	\$0
Municipal Solid Waste Combustion Facility	\$7,700	\$10,100	\$12,500

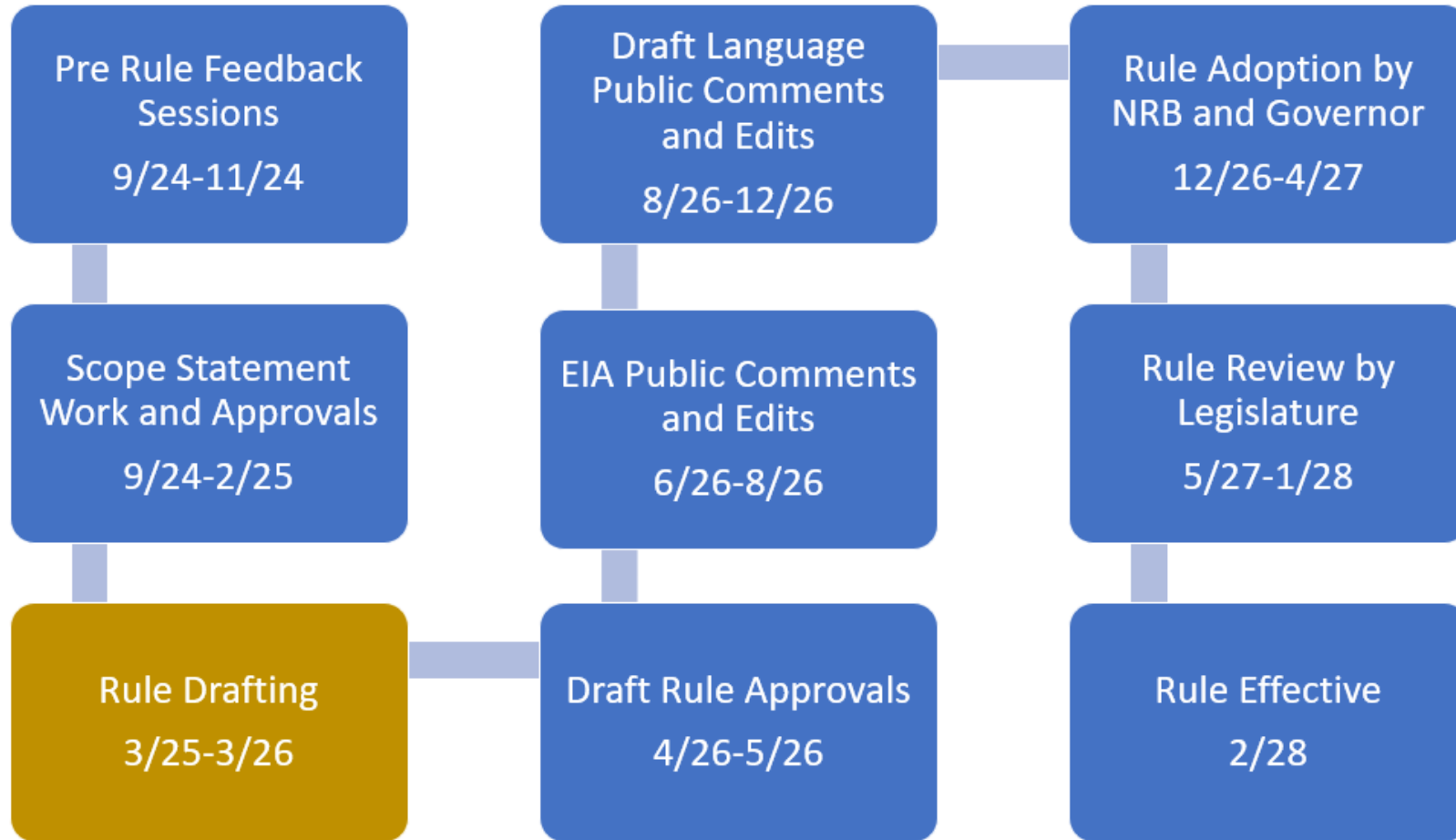
Timeline

- Winter 2028 – rule in effect.
 - 51-100 tpd transfer facilities become “nonexempt transfer facilities”
 - <10 tpd MSW combustors become “MSW combustors”
 - Processing facilities operating under s. NR 502.08(2)(i), Wis. Adm. Code, no longer exempt from plan review and licensing
 - Not exempt from transporter licensing if waste collection and hauling is primary business
 - Transporter fees waived if transporting only source-separated compostable material for composting or processing
 - Expedited plan reviews in effect

Timeline

- January 2029 – plan review “2029” fees used
- March/April 2029 – infectious waste annual report 2028 fee due
- September 2029 – “license year 2030” fees due
 - Invoice sent May 2029
 - Called 2030 license (runs Oct 1, 2029 – Sept 30, 2030)
- January 2030 – plan review “post 2029” fees used
- September 2030 – “post license year 2030” fees due
 - Invoice sent May 2030
 - Called 2031 license (runs October 1, 2030- Sept. 30, 2031)

NLF rule timeline



CONNECT WITH US

Casey Krausensky

Casey.Krausensky@wisconsin.gov

608-577-3643



@WIDNR



@WI_DNR



/WIDNRTV



"WILD WISCONSIN:
OFF THE RECORD"

DNR W&MM Program updates

- **Rulemaking:**
 - Non-LF (502, 526, 520)
 - E-Cycle
 - Haz Waste
- **Reporting season, billing**
- **CCR program submittal with EPA**
- **New Landfill Section – next FY**
- **Legislation**

Staffing:

- Hydrogeologist in SER starting June 1
- LRC Specialist starting June 1
- Organics Management Specialist starting June 1
- Retirements– Bob Germer and Joe Lourigan
- Recruiting for Hazardous Waste Specialist and Hydrogeologist-Emerging Contaminants Expert

Upcoming meetings & reports

- Council on Recycling 6/5
- E-Cycle WI annual report in June

Recent legislation

Act 169 relating to retention of environmental repair fees by certain municipal solid waste facilities.

Act 200 relating to exempting certain persons from PFAS enforcement actions under the spills law.

Act 201 relating to programs and requirements to address PFAS, as amended.

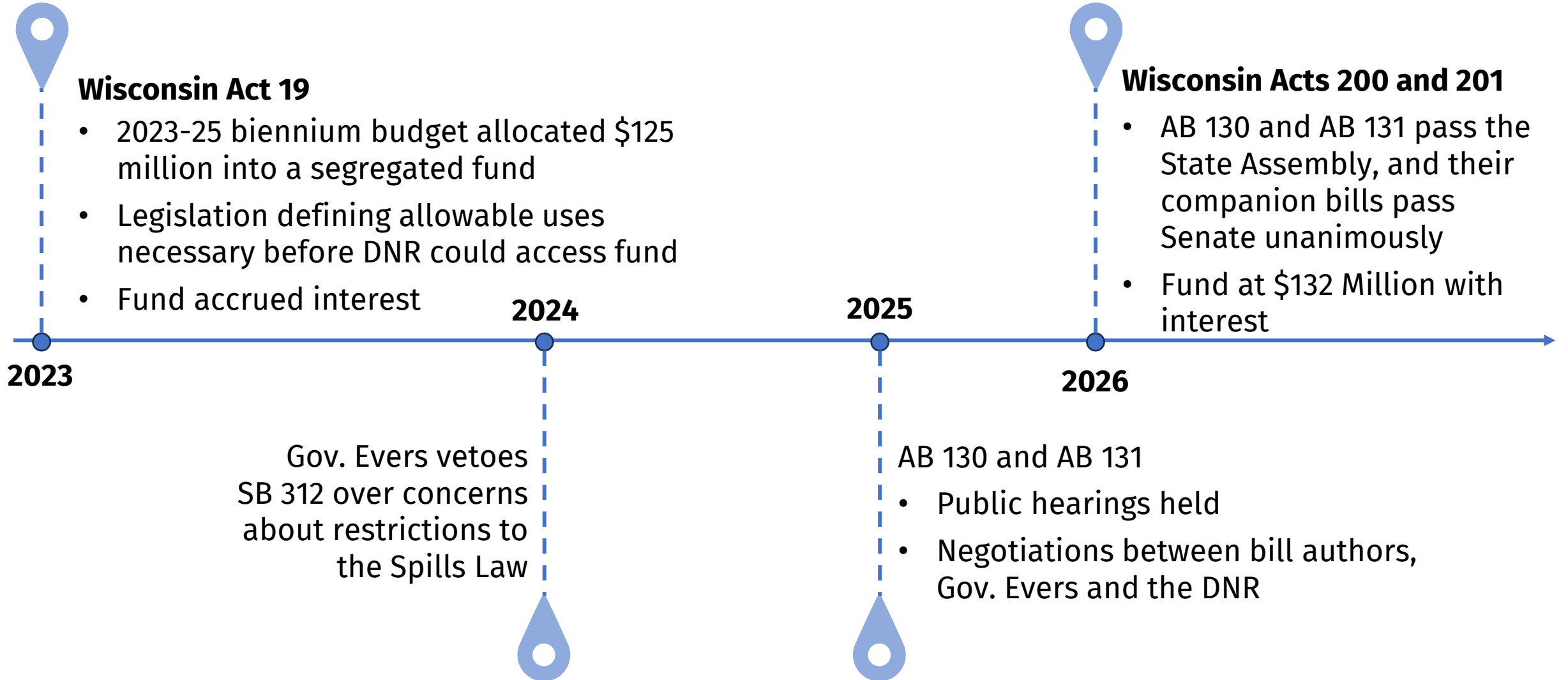
Act 170 relating to requiring battery stewardship organizations to administer battery collection and recycling programs and providing a penalty.

Act 171 relating to funding for a battery collection and recycling program and making an appropriation.


PFAS legislation overview

Kate Strom Hiorns

Legislation Timeline




What's In These Laws

 Exemptions to the Spills Law

 Codification of Interim Biosolids Strategy

 Airport and Industrial Possessor Grant Program

 Municipal and Private Well Grant Programs

 Other Provisions

 Staffing

Implementation Input and Updates

- Submit questions and feedback
 - <https://www.surveymonkey.com/r/LDL9DXY>
- DNR.WI.GOV/Topic/PFAS
 - Updates on implementation
 - Sign up for GovDelivery updates



Submit questions and feedback

CONNECT WITH US

Office of Emerging Contaminants

DNRPFASInquiries@Wisconsin.gov



@WIDNR



@WI_DNR



/WIDNRTV



"WILD WISCONSIN:
OFF THE RECORD"

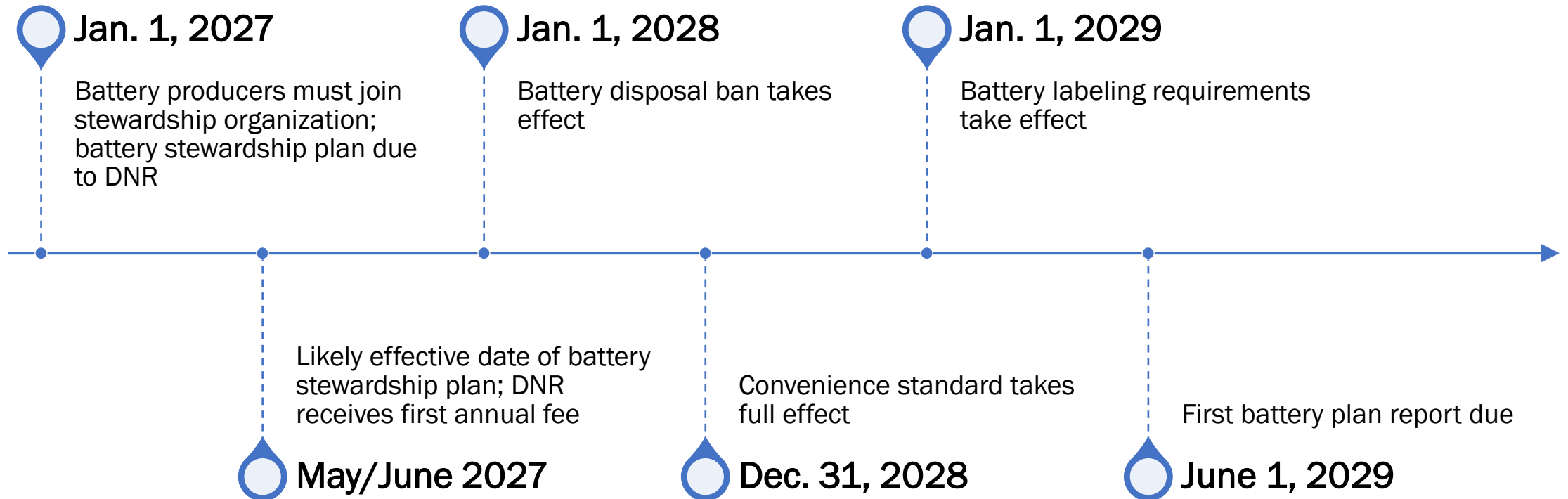
Wisconsin's battery recycling law

Sarah Murray, DNR Recycling and Solid Waste Section Manager

2025 Wisconsin Act 170/171

- Require producers of portable and medium-format batteries to join a battery stewardship organization and submit a plan to the DNR for a statewide battery collection and recycling program
- Program will provide free collection of batteries for recycling at locations around the state
- Battery disposal ban
- Funding (but not positions) for DNR implementation; hiring LTE
- Short implementation timeline will include providing guidance on overlap/conflict with existing solid and hazardous waste laws

Battery law implementation timeline



What's covered

- Primary (single-use) and rechargeable batteries weighing up to 25 pounds or with a rating of 2,000 what hours or less
- Examples:
 - Common household button cell, AA, AAA, C, D, 9-volt batteries
 - Batteries used in small electronics, power tools, vacuums and other small appliances, lawn equipment, e-bikes and scooters, etc.



What's not covered

- Lead-acid vehicle batteries
- Batteries not designed to be easily removed using common household tools (embedded batteries)
- Battery-containing devices except those covered by E-Cycle Wisconsin
- EV, storage and other large-format batteries (>25 pounds or 2,000 watt hours)
- Batteries in certain medical equipment not sold for personal use
- Batteries with an electrolyte as a free liquid

Electronics eligible under E-Cycle Wisconsin

- Cellphones, other phones with a video display and battery-operated phone accessories (*added 2023*)
- **Computers (desktop, laptop and netbook computers)**
- **Desktop printers, 3D printers and fax machines**
- **Computer monitors**
- Other computer accessories (e.g., keyboards, mice, speakers, external hard drives)
- **Tablets and e-readers**
- **TVs**
- DVD players, VCRs and other video players
- Other TV/monitor accessories (*added 2024*)
- **Video game consoles**
- Battery-operated video game components and portable hand-held gaming devices (*added 2023*)

Which Electronics Can I Recycle Under E-Cycle Wisconsin?



Wisconsin households and K-12 schools may recycle electronics through E-Cycle Wisconsin. The following electronics are accepted under E-Cycle Wisconsin. Many collection sites also accept other items. To find a collection site or mail-back program, visit dnr.wi.gov and search "ecycle."

Computers: desktops, laptops, netbook, notebooks

Fax machines and desktop printers, including 3-D printers and multifunction printers

TVs and monitors

Cellphones, tablets and e-readers

DVD players, VCRs, DVRs and other video players

Battery-powered phone accessories

Computer accessories, including keyboards, mice, hard drives, scanners, speakers, flash drives and other devices

Other TV/monitor accessories, including antennas, cable/satellite equipment, cords and cables, home theater systems, security cameras and other devices

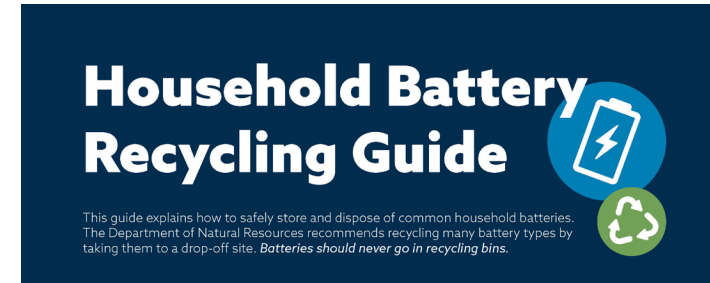
Video game consoles, hand-held video games and battery-powered accessories

dnr.wi.gov, search "e-cycle"

E-CYCLE WISCONSIN

What do I do with my batteries now?

- Never put batteries in recycling bins/carts
- Recycle lead-acid vehicle batteries through retailers or other drop-offs
- Find electronics and battery collection sites on the DNR website: dnr.wi.gov/topic/ecycle
- Store batteries safely by taping ends or putting in individual plastic bags



Prepare & Store Batteries for Recycling

Batteries can spark and start a fire if damaged, or if the terminals touch metal or each other. Many batteries, especially lithium ion, pose a fire risk due to their chemistries and ability to hold a charge.

The following steps can lower risk of fire:

- Put each battery in an individual, clear plastic bag, or tape each battery's terminals with clear packing tape.
- Keep battery labels visible.
- Store batteries in a non-metal container.
- Store swollen or damaged batteries in sand or kitty litter.
- Take stored batteries to a drop-off location frequently.

For a full list of electronics banned from the trash and to find collection sites or mail-back programs, visit our webpage: dnr.wi.gov/tiny/1301



Battery Recycling Locations

For lead-acid vehicle batteries:

- Bring to any Wisconsin retailer that sells these batteries for recycling.
- This service is free to customers who buy a new battery. Retailers may charge a fee if customers bring in a used battery without buying a new one.

For drop-off locations that accept other battery types:

- batterynetwork.org
- WisconsinRecyclingDirectory.com
- Contact your local recycling program (some sites may charge a fee or accept only certain battery types.)



Wisconsin Department of Natural Resources, Bureau of Waste and Materials Management
P.O. Box 7921 | Madison, WI 53707-7921 • DNRWise-cycling.wisconsin.gov
This publication is available in alternative format (large print, Braille, etc.) upon request. Please call 608-266-2111 for more information.
Note: If you need technical assistance or more information, call the Accessibility Coordinator at 608-267-7490 / TTY Access via relay - 711.

Implementation next steps



Hire LTE to lead implementation



Meet with potential battery stewardship organizations



Evaluate overlap/conflicts between battery law and solid/hazardous waste regulations



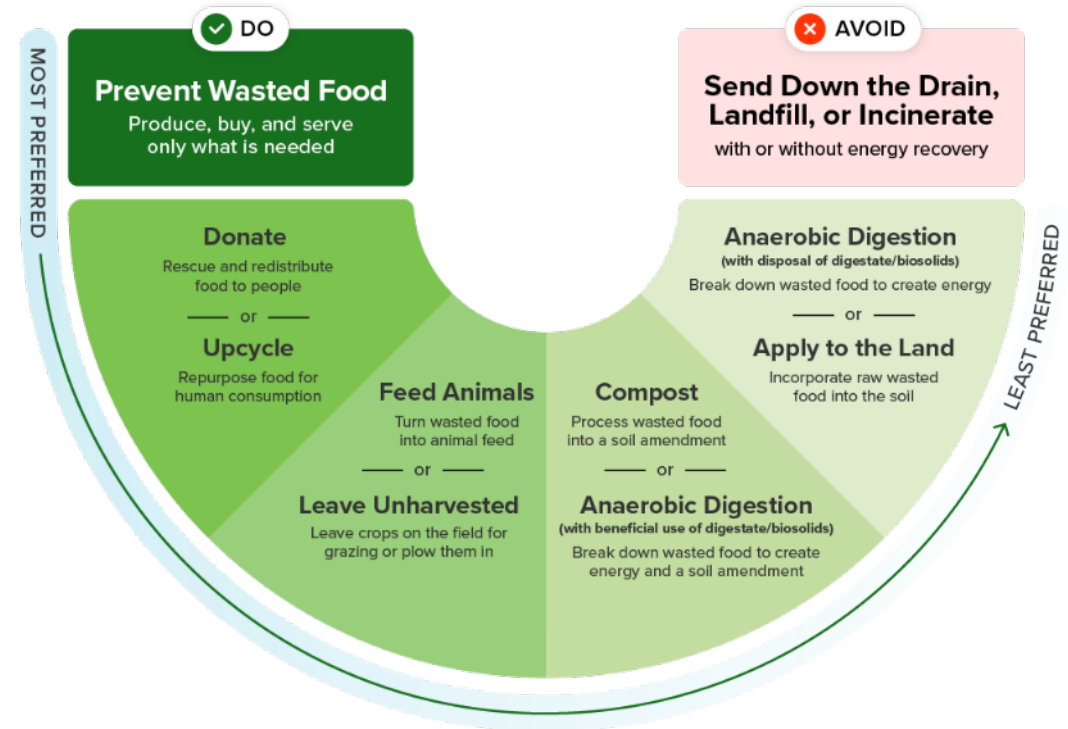
Provide guidance to potential collection sites on requirements and provide introduction to potential BSOs

Wisconsin DNR organics management updates

Sarah Murray, DNR

EPA Solid Waste Infrastructure for Recycling (SWIFR) States and Territories Grant

- Objective: to reduce by half per-capita food waste disposed of in Wisconsin landfills by 2030 (from 2020 levels)
 - Focus on education, infrastructure and measurement
 - Round 1: October 2023-September 2026
 - Round 2: October 2026-September 2029



Recent activities

- Presentations to Council on Recycling, Green Tier Legacy Communities, EPA Composting/AD Peer Network, Wisconsin Composting Council
- New organics management specialist starting in June
- Stakeholder feedback webinar April 21
- Celebrating Compost Awareness Week

Highlights of remaining Round 1 work



Contract with Dane County and subcontractors to provide one-on-one food service technical assistance



Establish data collection plan and procedures to measure future outcomes



Continued outreach/technical assistance



Use Wisconsin Food Waste Evaluation and stakeholder input as basis for statewide high-level plan

SWIFR Round 2 focus areas

- Full-time DNR staff member to lead statewide outreach and technical assistance, policy development, other project activities
- Continued focus on residential and food service sectors
 - Increase outreach
 - Development of tools/resources to facilitate food waste diversion along EPA Wasted Food Scale
 - Potential funding to establish food service composting/AD programs



DNR next steps



- SWIFR Round 2 workplan due to EPA May 15
- Hope to have new staff member starting mid- to late May
- Complete Round 1 activities
- Continue stakeholder conversations and look for opportunities

CONNECT WITH US

**Sarah Murray, Recycling and Solid
Waste Section Manager**

Sarah.murray@wisconsin.gov, 608-234-0533



@WIDNR



@WI_DNR



/WIDNRTV



"WILD WISCONSIN:
OFF THE RECORD"