

STANDARD LEGEND

EXISTING	PROPOSED	ROADWAYS
		GRAVEL
		PAVED
		RAILROAD
		CENTERLINE
		WALKS/DRIVES
		WALLS/FENCES
		FENCE LINE
		CONTOURS
		INDEX CONTOUR AND TEXT (10' CONTOURS)
		INTERMEDIATE CONTOUR (2' CONTOURS)
		DEPRESSION
		SPOT ELEVATION
		TREES
		DECIDUOUS
		CONIFER
		BUSH
		TREE LINE AND/OR BUSH
		WATER
		STREAMS, BODIES OF WATER
		DITCH WITH FLOW AND DIRECTION
		BRIDGE
		CULVERT
		EXISTING WETLAND DELINEATED IN 2011
		BUILDING
		BUILDING
		FEATURES
		MONITORING WELL
		SOIL BORING
		TEST PIT
		PIEZOMETER
		STAFF GAUGE
		PRIVATE WELL
		LEACHATE HEAD WELL
		LEACHATE HEAD WELL MONITORING PORT
		LEAK DETECTION DEVICE AND NUMBER
		UTILITIES
		UNDERGROUND ELECTRIC LINE
		OVERHEAD ELECTRIC LINE
		GAS
		TELEPHONE
		CABLE
		SANITARY SEWER LINE
		STORM SEWER LINE
		MISCELLANEOUS
		LIMITS OF WASTE/FACILITY BOUNDARY
		LIMITS OF LINER CONSTRUCTION
		LIMITS OF TOPSOIL REMOVAL
		LIMITS OF CLEARING AND GRUBBING
		DRAINAGE LAYER DISCHARGE TRENCH AND DISCHARGE PIPE
		SURVEY DATA
		PROPERTY LINE
		RIGHT-OF-WAY LINE
		BENCH MARK
		SURVEY CONTROL POINT
		MONUMENT

STANDARD LEGEND

EXISTING	PROPOSED	PIPE
		FORCEMAIN LINE
		COLLECTION PIPE (PERFORATED)
		COLLECTION PIPE (NON-PERFORATED)
		SLOTTED DRAINAGE PIPE
		LEACHATE RECIRCULATION FORCEMAIN
		LANDFILL GAS HEADER PIPE
		SANITARY SEWER LINE
		STORM SEWER LINE
		COLLECTION SUMP
		PERIMETER ACCESS MANHOLE
		TRANSFER MANHOLE
		GAS EXTRACTION DRIPLEG
		STORM SEWER MANHOLE
		STORM SEWER INLET
		SANITARY SEWER MANHOLE
		PUMPOUT STATION
		LEACHATE CLEANOUT
		GRADIENT CONTROL CLEANOUT
		SURFACE
		SEDIMENTATION BASIN
		FINAL COVER DIVERSION BERM
		RIPRAP SPILLWAY
		PLAN SHEET
		GRID TICK AND STATION
		COORDINATE POINT LOCATION
		DETAIL 3 ON SHEET 8
		SLOPE PERCENT AND DIRECTION
		POTENTIAL SOIL STOCKPILE AREA
		ENGINEERING/GEOLIGIC CROSS SECTION LOCATION
		SURFACE WATER FLOW ARROW

DETAILS LEGEND

	GEOTEXTILE		TOPSOIL
	GEONET COMPOSITE		GENERAL FILL
	GEOMEMBRANE		RIPRAP
	GEOSYNTHETIC CLAY LINER (GCL)		CONCRETE
	CONSTRUCTION LINES		BENTONITE AND CLAY MIXTURE
	CONSTRUCTION LINES (DASHED)		
	VEGETATION		
	SELECT AGGREGATE FILL		
	SELECT CLAY FILL		
	SELECT GRANULAR FILL/GRADIANT CONTROL LAYER		
	BASE COURSE		
	NATIVE SOIL		

STANDARD NOTES

NOTES

- SITE LOCATION: E 1/2 OF THE NW 1/4 AND W 1/2 OF THE NE 1/4 SECTION 23, T28N, RTE, TOWN OF KNOWLTON, MARATHON COUNTY, WISCONSIN.
- THE TOPOGRAPHIC BASE MAP HAS BEEN CREATED FROM AERIAL PHOTOGRAPHY AND LIDAR ACQUISITION BY AERO-METRIC, INC., SHEBOYGAN, WI. DATE FLOWN: NOVEMBER 5, 2010.
- HORIZONTAL DATUM IS BASED ON WISCONSIN STATE PLANE COORDINATE SYSTEM, CENTRAL ZONE, NAD 83/2007.
- VERTICAL DATUM BASED UPON NORTH AMERICAN VERTICAL DATUM 1988. CONTOUR INTERVAL IS 2 FEET.
- APPROXIMATE PROPERTY LINE IS BASED ON INFORMATION SUPPLIED BY WPS.
- THIS LEGEND SHEET HAS BEEN PREPARED TO DEPICT VARIOUS ITEMS THAT MAY BE UTILIZED ON PLAN SHEETS. SEVERAL OF THESE ITEMS MAY NOT BE PRESENTED ON THIS SPECIFIC PLAN SET.

CONTROL POINT COORDINATES AND ELEVATIONS				
POINT I.D.	NORTH	EAST	ELEVATION	DESCRIPTION
PCM-1	325,119.67	2,063,449.84	1198.63	MONUMENT
PCM-2	325,367.83	2,062,998.81	1199.35	MONUMENT
PCM-3	324,287.89	2,063,003.60	1184.16	MONUMENT

**WESTON DISPOSAL SITE NO. 3
 EXPANSION
 PLAN OF OPERATION
 MODIFICATION**

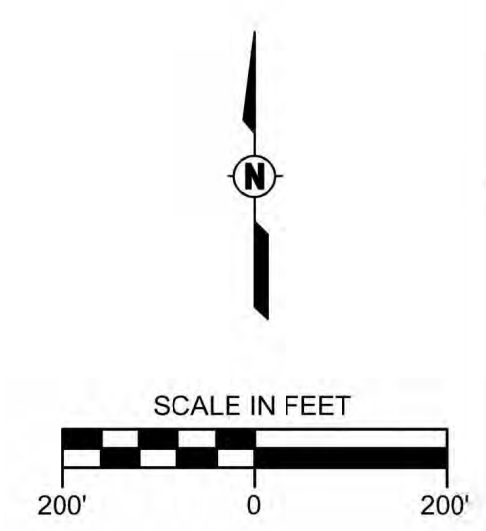
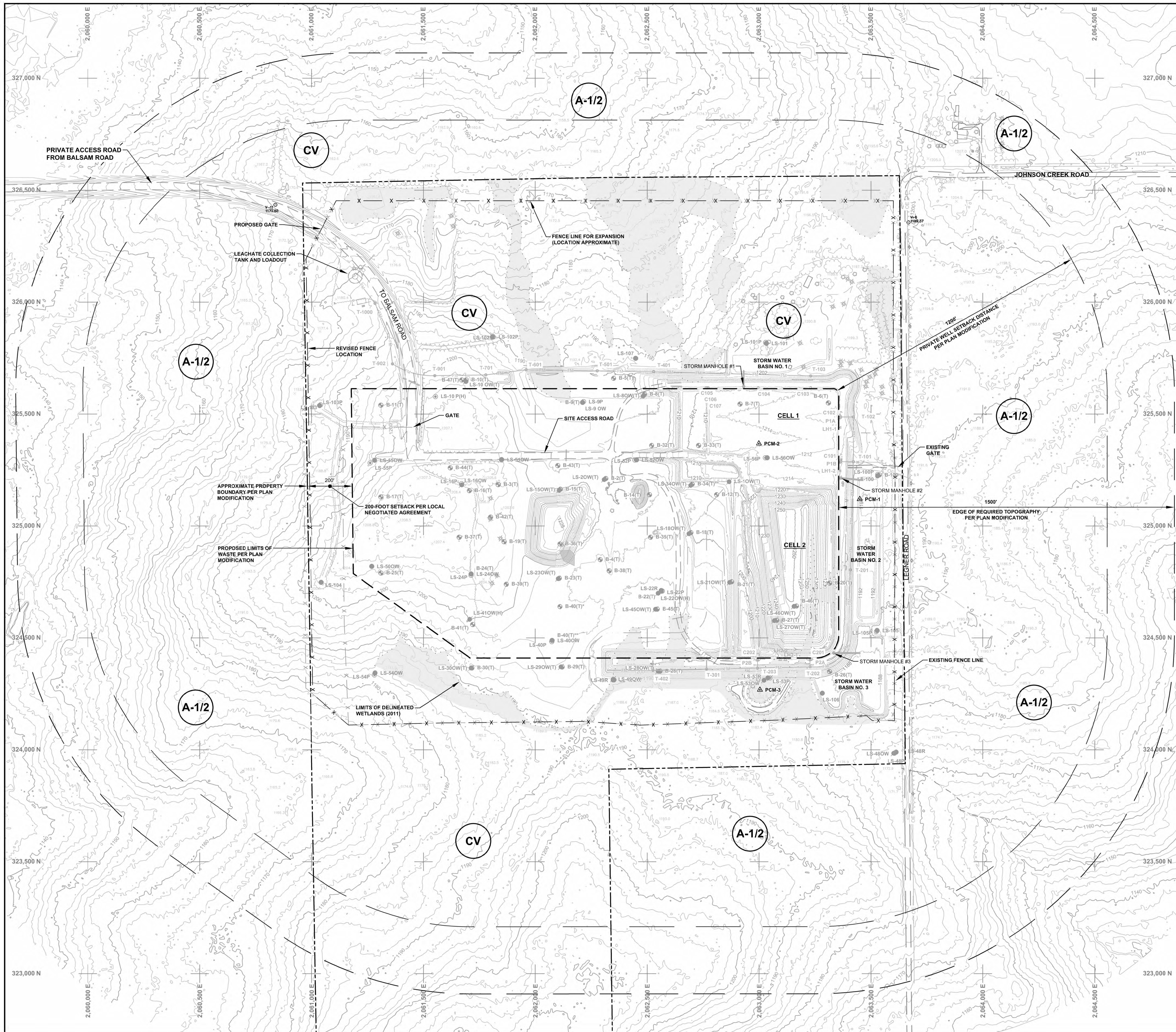
P.E. No.:
 Approved: JXT
 Checked: JXT
 Drawn: JLC
 Designed: JLC
 GEI Project: 2203724

Attention: 1"
 0
 If this scale bar does not measure 1" then drawing is not original scale.

NO.	DATE	ISSUE/REVISION	APP
1	9/29/2023	PLAN MOD	JXT

STANDARD LEGEND AND GENERAL NOTES

DWG. NO.
PM-2
 SHEET NO.
 2 OF 29



**WESTON DISPOSAL SITE NO. 3
 EXPANSION
 PLAN OF OPERATION
 MODIFICATION**

ZONING CLASSIFICATION

A-1/2 AGRICULTURAL DISTRICT
CV CONSERVANCY DISTRICT

P.E. No.:
 Approved: JXT
 Checked: JXT
 Drawn: JLC
 Designed: JLC
 GEI Project: 2203724

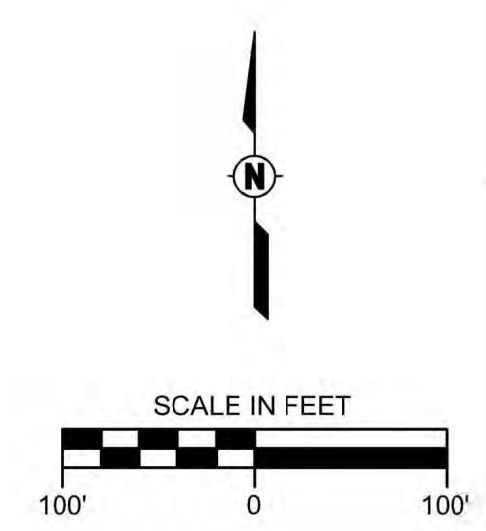
Attention: 1"
 If this scale bar does not measure 1" then drawing is not original scale.

NO.	DATE	ISSUE/REVISION	APP
1	9/29/2023	PLAN MOD	JXT

- NOTES:**
- TOPOGRAPHIC MAP CREATED FROM AERIAL PHOTOGRAPHY AND LIDAR ACQUISITION BY AERO-METRIC, INC., SHEBOYGAN, WISCONSIN, NOVEMBER 5, 2010.
 - PLAN OF OPERATION MODIFICATION, WESTON DISPOSAL SITE NO. 3 EXPANSION BY TRC ENVIRONMENTAL CORPORATION, MADISON, WISCONSIN, JULY 1, 2015.
 - CELLS 3-6 EXISTING CONDITIONS, WERE SURVEYED BY GEI CONSULTANTS, GREEN BAY, WISCONSIN, APRIL 27, 2016.
 - CELLS 1 & 2 WERE SURVEYED BY RIVERVIEW CONSTRUCTION, INC., WAUSAU, WI, OCTOBER 21, 2021.
 - TWO-FOOT CONTOUR BASED ON NORTH AMERICAN VERTICAL DATUM OF 1988 (NAVD88).
 - HORIZONTAL DATUM BASED ON WISCONSIN STATE PLANE COORDINATE SYSTEM, CENTRAL ZONE, NAD 83/2007.
 - COUNTY ZONING INFORMATION OBTAINED FROM MAP DEVELOPED BY MARATHON COUNTY CONSERVATION, PLANNING AND ZONING DEPARTMENT. APPROVAL DATE: AUGUST 22, 1988. REVISION DATE APRIL 16, 2013. MAP DATE APRIL 25, 2013.
 - ACCESS TO THE WESTON DISPOSAL SITE NO. 3 IS CONTROLLED BY A FENCE AND GATE ALONG THE PRIVATE ACCESS ROAD THAT EXTENDS TO THE SITE FROM BALSAM ROAD. A GATE LOCATED AT THE SITE ACCESS FROM LEGNER ROAD IS PROVIDED FOR SERVICE AND EMERGENCY VEHICLES ONLY.
 - LOCATIONS OF UTILITIES ALONG JOHNSON CREEK ROAD, LEGNER ROAD, AND THE LANDFILL ARE BASED UPON A DRIVE BY SURVEY PERFORMED BY WPS PERSONNEL IN JANUARY 2014.

**EXISTING
 CONDITIONS MAP
 AND SITE LAYOUT**

DWG. NO.
PM-3
 SHEET NO.
 3 OF 29



**WESTON DISPOSAL SITE NO. 3
 EXPANSION
 PLAN OF OPERATION
 MODIFICATION**

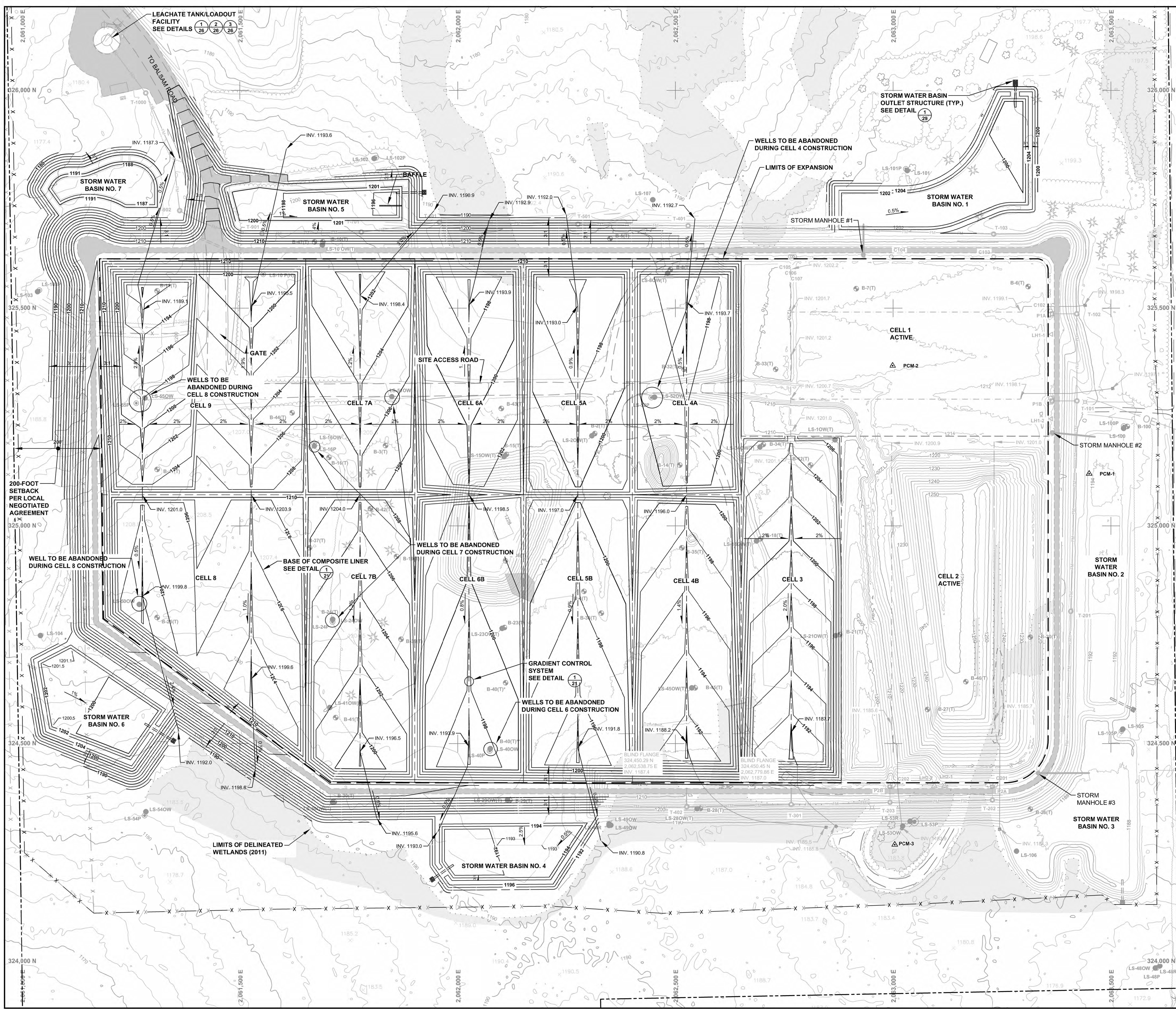
P.E. No.:
 Approved: JXT
 Checked: JXT
 Drawn: JLC
 Designed: JLC
 GEI Project: 2203724

Attention: 1"
 If this scale bar does not measure 1" then drawing is not original scale.

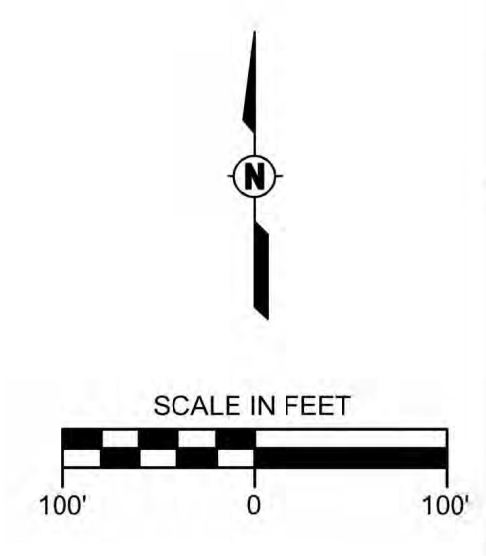
NO.	DATE	ISSUE/REVISION	APP
1	9/29/2023	PLAN MOD	JXT

SUBBASE GRADES

DWG. NO.
PM-4
 SHEET NO.
 4 OF 29



- NOTES:**
- REFER TO PLAN SHEET 2 OF THE PLAN SET FOR LEGEND AND BASE MAP NOTES.
 - CELLS 1 & 2 WERE SURVEYED BY RIVERVIEW CONSTRUCTION, INC., WAUSAU, WI, OCTOBER 21, 2021.
 - CONTOURS PRESENTED ON THIS PLAN SHEET REPRESENT THE BASE (BOTTOM) OF THE CLAY LINER (WITHIN THE LIMITS OF THE COMPOSITE LINER) AND THE FINISHED GRADES BEYOND THE LIMITS OF COMPOSITE LINER (EXCEPT AS SHOWN ON DETAIL 4 OF 21).
 - STRAW BALE DITCH CHECKS, EROSION LOGS OR EROSION CONTROL FENCE MAY BE INSTALLED DURING CONSTRUCTION AND/OR OPERATIONS AS REQUIRED.
 - THE 12-INCH THICK GRADIENT CONTROL SYSTEM WILL BE INSTALLED ONE FOOT BELOW THE SUBBASE GRADES AS SHOWN ON DETAIL 1 ON PLAN SHEET 21. THE GRADIENT CONTROL SYSTEM WILL BE CONSTRUCTED WITHIN THE LIMITS OF THE TOE OF SLOPE OF THE EXTERIOR PERIMETER BERM AND WILL EXTEND OUT 25 FEET BEYOND THE LEACHATE COLLECTION PIPE IN EITHER DIRECTION.
 - BASIN OUTLET PIPES TO MAINTAIN MINIMUM 0.5% SLOPE.
 - A TEMPORARY JOB TRAILER ALONG WITH VISITOR PARKING AREA ON AN ALL-WEATHER ACCESS PAD WILL BE PROVIDED FOR EACH CONSTRUCTION EVENT. THE LOCATION MAY VARY FOR EACH CONSTRUCTION EVENT.



**WESTON DISPOSAL SITE NO. 3
 EXPANSION
 PLAN OF OPERATION
 MODIFICATION**

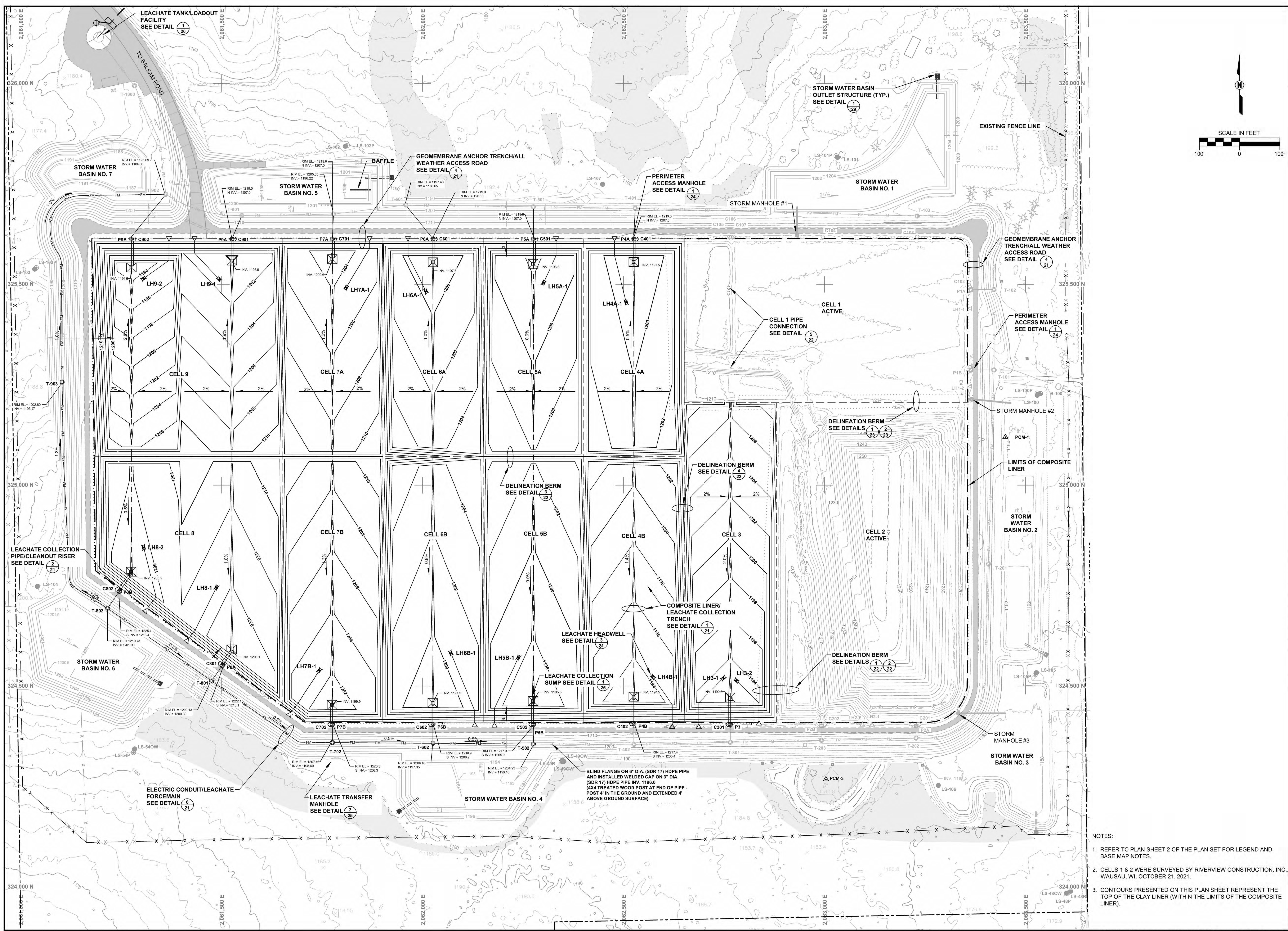
P.E. No.:
 Approved: JXT
 Checked: JXT
 Drawn: JLC
 Designed: JLC
 GEI Project: 2203724

Attention: 1"
 If this scale bar does not measure 1" then drawing is not original scale.

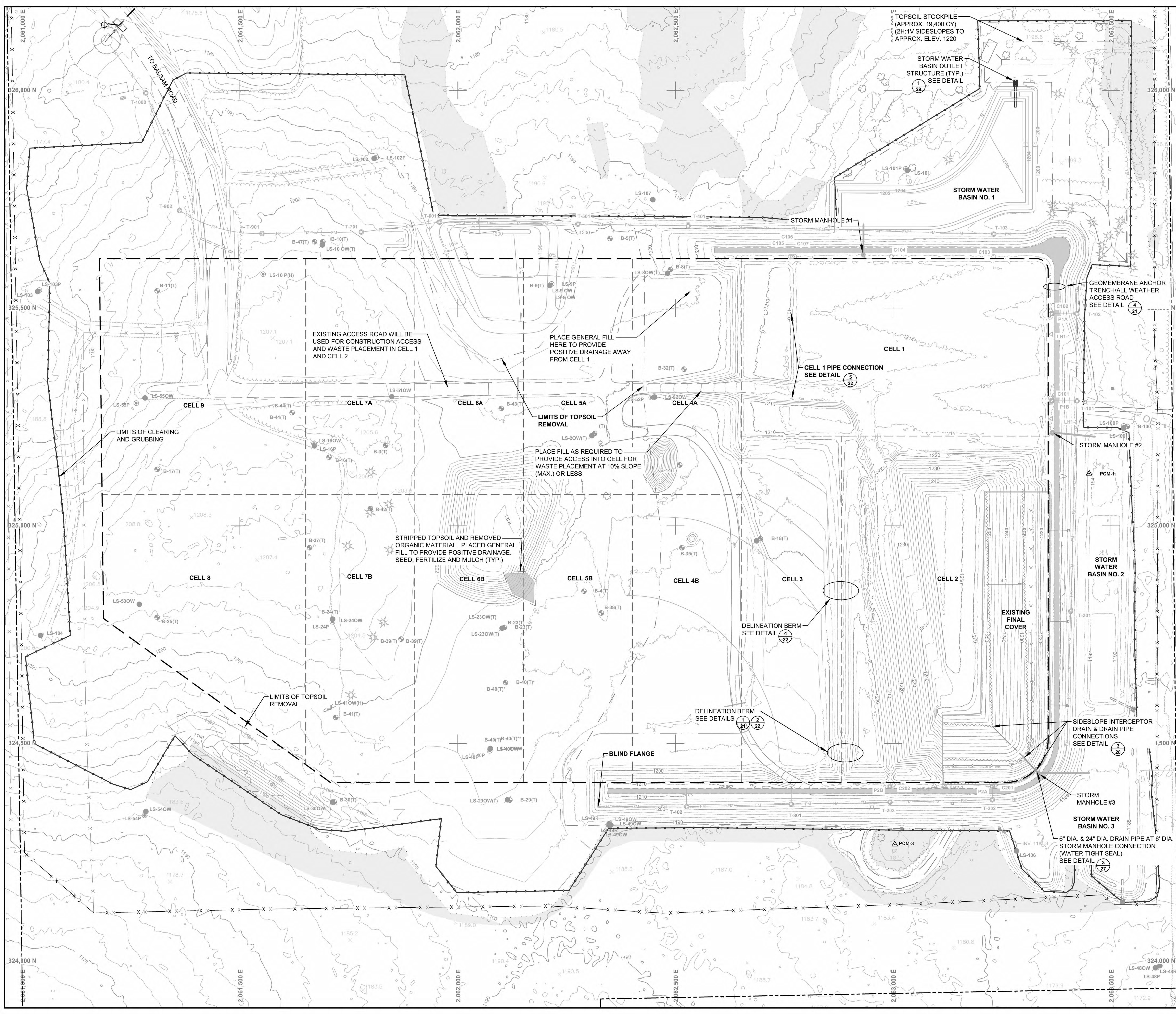
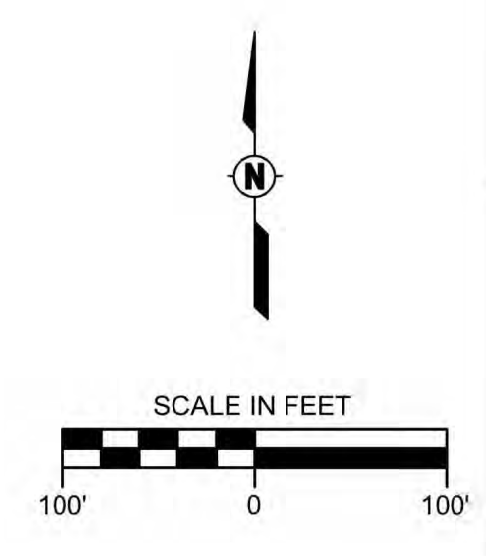
NO.	DATE	ISSUE/REVISION	APP
1	9/29/2023	PLAN MOD	JXT

**BASE GRADES/
 LEACHATE COLLECTION
 SYSTEM**

DWG. NO.
PM-5
 SHEET NO.
 5 OF 29



- NOTES:**
- REFER TO PLAN SHEET 2 OF THE PLAN SET FOR LEGEND AND BASE MAP NOTES.
 - CELLS 1 & 2 WERE SURVEYED BY RIVERVIEW CONSTRUCTION, INC., WAUSAU, WI, OCTOBER 21, 2021.
 - CONTOURS PRESENTED ON THIS PLAN SHEET REPRESENT THE TOP OF THE CLAY LINER (WITHIN THE LIMITS OF THE COMPOSITE LINER).



**WESTON DISPOSAL SITE NO. 3
 EXPANSION
 PLAN OF OPERATION
 MODIFICATION**

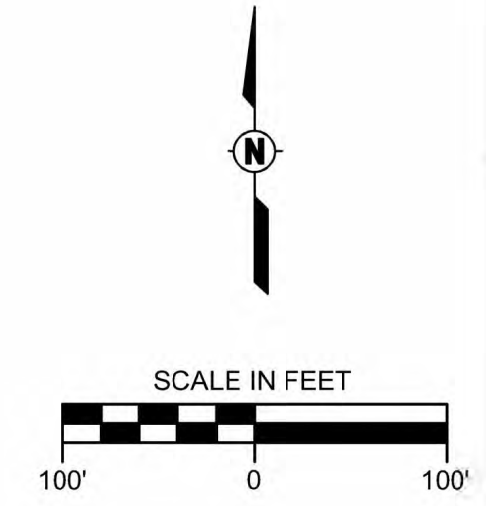
P.E. No.:
 Approved: JXT
 Checked: JXT
 Drawn: JLC
 Designed: JLC
 GEI Project: 2203724

Attention: 1"
 If this scale bar does not measure 1" then drawing is not original scale.

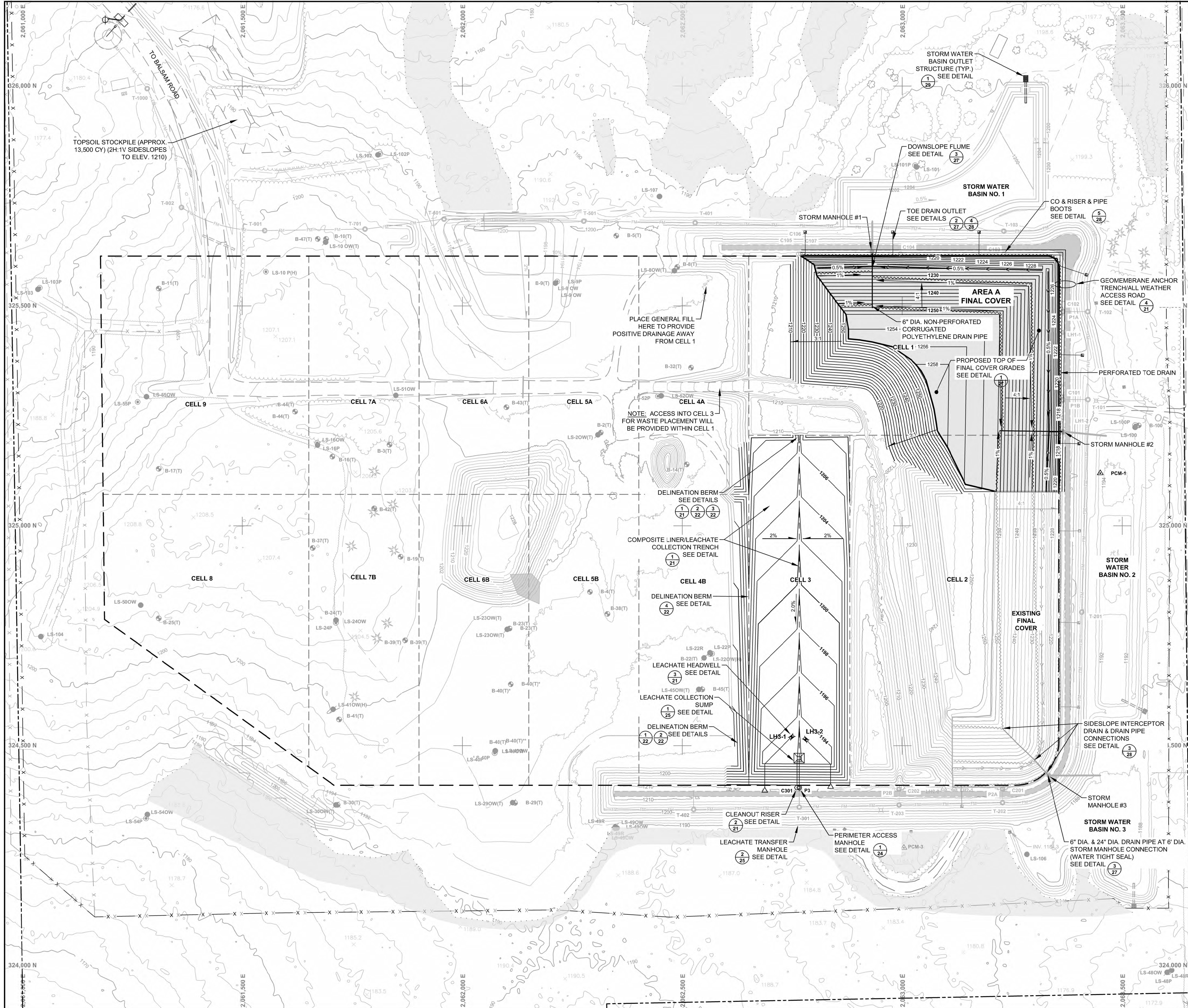
NO.	DATE	ISSUE/REVISION	APP
1	9/29/2023	PLAN MOD	JXT

**CELL 1 & 2
 SITE
 PREPARATION**

- NOTES:**
- REFER TO PLAN SHEET 2 OF THE PLAN SET FOR LEGEND AND BASE MAP NOTES.
 - CELLS 1 & 2 WERE SURVEYED BY RIVERVIEW CONSTRUCTION, INC., WAUSAU, WI, OCTOBER 21, 2021.
 - AUXILIARY SEDIMENT TRAPS WILL BE CONSTRUCTED AS NECESSARY DURING DEVELOPMENT OF EACH CELL.



**WESTON DISPOSAL SITE NO. 3
 EXPANSION
 PLAN OF OPERATION
 MODIFICATION**



CELL 3 BASE LINER CONSTRUCTION QUANTITIES

COMPOSITE LINER	
Topsoil Stockpile Volume	10,700 CY
Structural Fill	29,800 CY
Geotextile, gradient control trench	750 SY
Select Aggregate, gradient control trench	240 CY
Select Granular Fill, gradient control system	1,360 CY
Compacted Clay	13,600 CY
Cell Delineation Berm	750 LF
Geosynthetic Clay Liner	20,300 SY
60-mil Textured HDPE Geomembrane	20,300 SY
Geotextile Cushion	1,300 SY
Select Aggregate, leachate collection system	490 CY
Select Granular Fill, leachate collection system	6,800 CY
Perimeter Access Road	225 LF
PIPE	
Leachate Headwell Pipe	280 LF
Leachate Collection Pipe, perforated	725 LF
Leachate Collection Pipe, solid	70 LF
Gradient Control Pipe, perforated	725 LF
Gradient Control Pipe, solid	210 LF
Riser Pipe, perforated	15 LF
Riser Pipe, solid	70 LF
Perimeter Access Manhole	1 EA
Submersible Pump with Control Panel	1 EA
Cleanout	1 EA

AREA A FINAL COVER CONSTRUCTION QUANTITIES

COMPOSITE LINER	
Select Clay or Soil Barrier Layer	15,000 CY
GCL (if soil barrier layer is utilized)	22,500 SY
40-mil Geomembrane	22,500 SY
Geocomposite Drainage Layer	22,500 SY
General Fill, Rooting Zone	18,750 CY
4-inch Diameter Drainage Pipe	2,950 LF
Surface Water Diversion Berm	1,050 LF
Topsoil	3,750 CY
Toe Drain Outlet	6 EA
Storm Water Manhole	2 EA
Downslope Flume	2 EA

P.E. No.:
 Approved: JXT
 Checked: JXT
 Drawn: JLC
 Designed: JLC
 GEI Project: 2203724

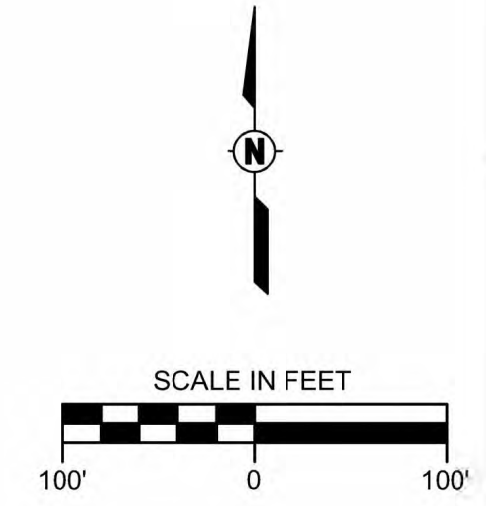
Attention: 1"			
If this scale bar does not measure 1" then drawing is not original scale.			
NO.	DATE	ISSUE/REVISION	APP
1	9/29/2023	PLAN MOD	JXT

Notes:
 Volumes are in-place volumes. Quantities are subject to change based on in-field conditions at the time of construction. System appurtenances are not included in quantities.

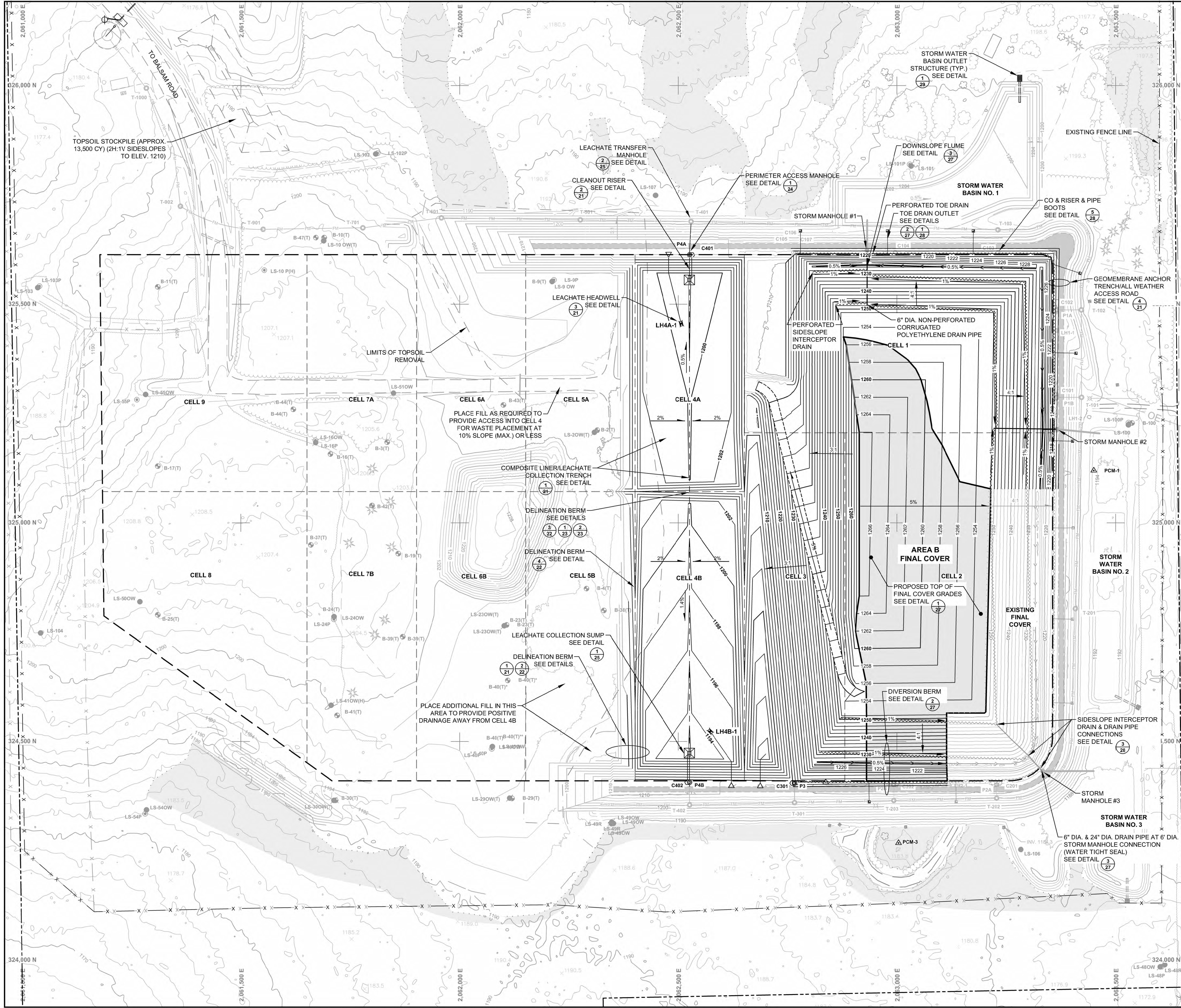
Notes:
 Volumes are in-place volumes. Quantities are subject to change based on in-field conditions at the time of construction. System appurtenances are not included in quantities.

- NOTES:**
- REFER TO PLAN SHEET 2 OF THE PLAN SET FOR LEGEND AND BASE MAP NOTES.
 - CELLS 1 & 2 WERE SURVEYED BY RIVERVIEW CONSTRUCTION, INC., WAUSAU, WI, OCTOBER 21, 2021.
 - AUXILIARY SEDIMENT TRAPS WILL BE CONSTRUCTED AS NECESSARY DURING DEVELOPMENT OF EACH CELL.

CELL 3 SITE PREPARATION, AREA A CLOSURE



**WESTON DISPOSAL SITE NO. 3
 EXPANSION
 PLAN OF OPERATION
 MODIFICATION**



CELL 4 BASE LINER CONSTRUCTION QUANTITIES

COMPOSITE LINER	
Topsoil Stockpile Volume	13,200 CY
Structural Fill	52,900 CY
Geotextile, gradient control trench	1,100 SY
Select Aggregate, gradient control trench	1,170 CY
Select Granular Fill, gradient control system	2,020 CY
Compacted Clay	22,300 CY
Cell Delineation Berm	1,140 LF
Geosynthetic Clay Liner	33,400 SY
60-mil Textured HDPE Geomembrane	33,400 SY
Geotextile Cushion	1,900 SY
Select Aggregate, leachate collection system	710 CY
Select Granular Fill, leachate collection system	1,100 CY
Perimeter Access Road	450 LF

PIPE

Leachate Headwell Pipe	130 LF
Leachate Collection Pipe, perforated	1,040 LF
Leachate Collection Pipe, solid	120 LF
Gradient Control Pipe, perforated	1,040 LF
Gradient Control Pipe, solid	560 LF
Riser Pipe, perforated	30 LF
Riser Pipe, solid	120 LF
Perimeter Access Manhole	2 EA
Submersible Pump with Control Panel	2 EA
Cleanout	1 EA
Abandon Monitoring Well	2 EA

Note:
 Volumes are in-place volumes. Quantities are subject to change based on in-field conditions at the time of construction. System appurtenances are not included in quantities.

AREA B FINAL COVER CONSTRUCTION QUANTITIES

COMPOSITE LINER	
Select Clay or Soil Barrier Layer	17,500 CY
GCL (if soil barrier layer is utilized)	26,150 SY
40-mil Geomembrane	26,150 SY
Geocomposite Drainage Layer	26,150 SY
General Fill, Rooting Zone	22,000 CY
4-inch Diameter Drainage Pipe	550 LF
Surface Water Diversion Berm	175 LF
Topsoil	4,400 CY
Toe Drain Outlet	1 EA

Note:
 Volumes are in-place volumes. Quantities are subject to change based on in-field conditions at the time of construction. System appurtenances are not included in quantities.

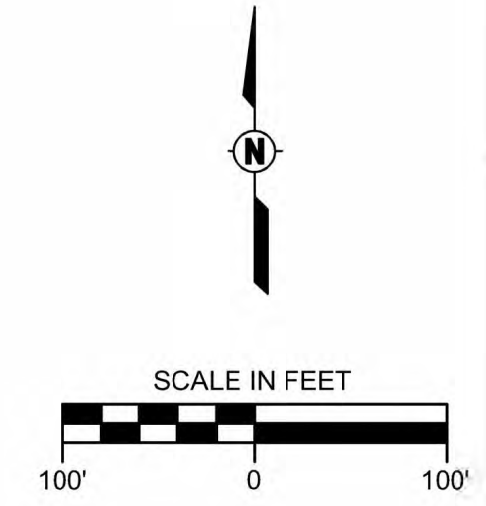
- NOTES:**
- REFER TO PLAN SHEET 2 OF THE PLAN SET FOR LEGEND AND BASE MAP NOTES.
 - CELLS 1 & 2 WERE SURVEYED BY RIVERVIEW CONSTRUCTION, INC., WAUSAU, WI, OCTOBER 21, 2021.
 - AUXILIARY SEDIMENT TRAPS WILL BE CONSTRUCTED AS NECESSARY DURING DEVELOPMENT OF EACH CELL.

P.E. No.:
 Approved: JXT
 Checked: JXT
 Drawn: JLC
 Designed: JLC
 GEI Project: 2203724

NO.	DATE	ISSUE/REVISION	APP
1	9/29/2023	PLAN MOD	JXT

Attention: 1"
 If this scale bar does not measure 1" then drawing is not original scale.

CELL 4 SITE PREPARATION, AREA B CLOSURE



**WESTON DISPOSAL SITE NO. 3
 EXPANSION
 PLAN OF OPERATION
 MODIFICATION**

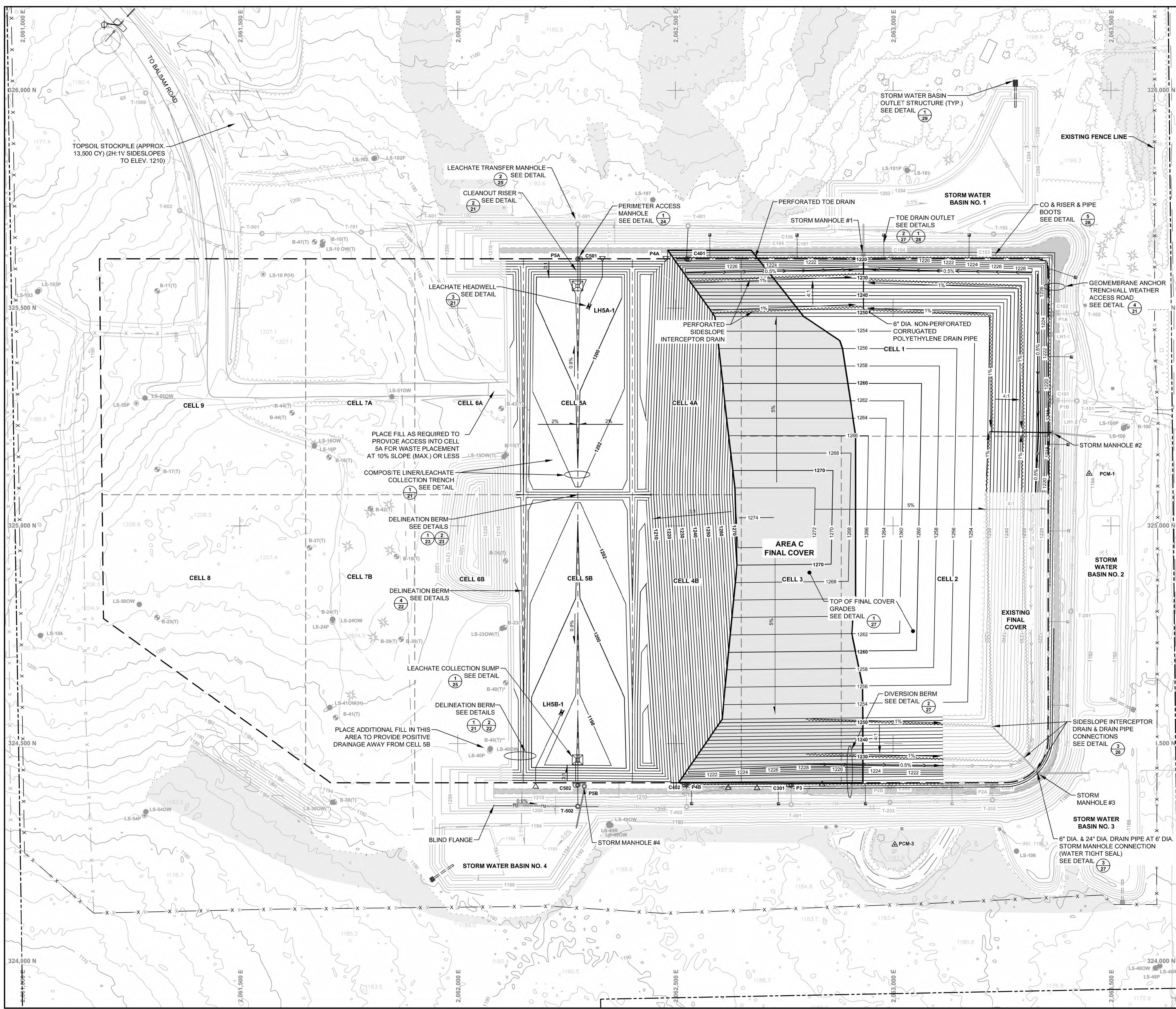
P.E. No.:
 Approved: JXT
 Checked: JXT
 Drawn: JLC
 Designed: JLC
 GEI Project: 2203724

Attention: 1"

If this scale bar does not measure 1" then drawing is not original scale.

NO.	DATE	ISSUE/REVISION	APP
1	9/29/2023	PLAN MOD	JXT

CELL 5 SITE PREPARATION, AREA C CLOSURE



CELL 5 BASE LINER CONSTRUCTION QUANTITIES

COMPOSITE LINER	Quantity
Topsoil Stockpile Volume	14,900 CY
Structural Fill	60,400 CY
Geotextile, gradient control trench	1,100 SY
Select Aggregate, gradient control trench	160 CY
Select Granular Fill, gradient control system	2,040 CY
Compacted Clay	22,300 CY
Cell Delineation Berm	1,140 LF
Geosynthetic Clay Liner	33,400 SY
60-mil Textured HDPE Geomembrane	33,400 SY
Geotextile Cushion	2,000 SY
Select Aggregate, leachate collection system	720 CY
Select Granular Fill, leachate collection system	1,100 CY
Perimeter Access Road	450 LF

PIPE	Quantity
Leachate Headwell Pipe	280 LF
3-Inch Inside 6-Inch Forcemain Extension	240 LF
Leachate Collection Pipe, perforated	1,050 LF
Leachate Collection Pipe, solid	120 LF
Gradient Control Pipe, perforated	1,050 LF
Gradient Control Pipe, solid	330 LF
Riser Pipe, perforated	30 LF
Riser Pipe, solid	120 LF
Perimeter Access Manhole	2 EA
Submersible Pump with Control Panel	2 EA
Cleanout	2 EA
Abandon Monitoring Well	1 EA
Surface Water Drop Manhole	1 EA
Stormwater Basin	1 EA

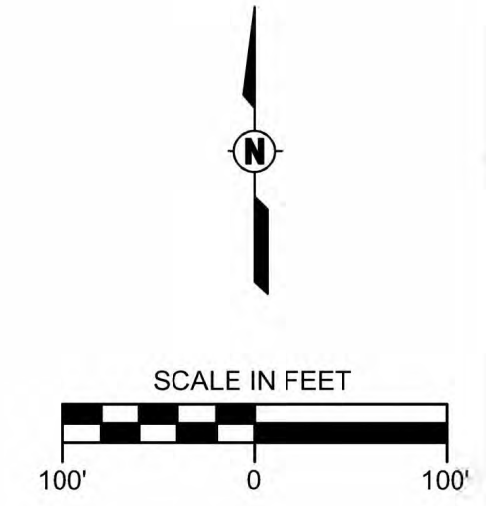
AREA C FINAL COVER CONSTRUCTION QUANTITIES

COMPOSITE LINER	Quantity
Select Clay or Soil Barrier Layer	26,000 CY
GCL (if soil barrier layer is utilized)	38,700 SY
40-mil Geomembrane	38,700 SY
Geocomposite Drainage Layer	38,700 SY
General Fill, Rooting Zone	32,300 CY
4-inch Diameter Drainage Pipe	1,250 LF
Surface Water Diversion Berm	320 LF
Topsoil	6,500 CY
Toe Drain Outlet	3 EA

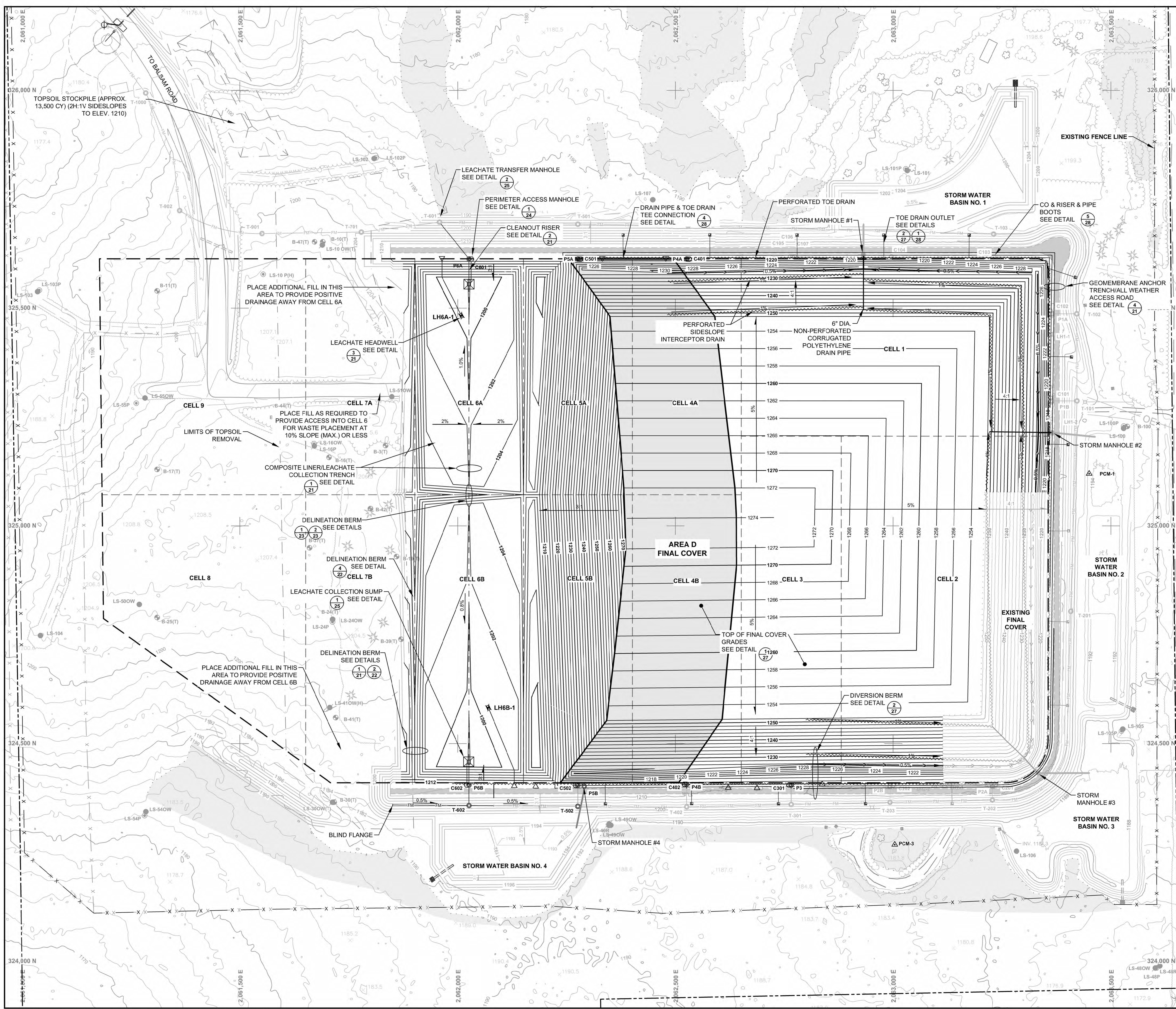
- NOTES:**
- REFER TO PLAN SHEET 2 OF THE PLAN SET FOR LEGEND AND BASE MAP NOTES.
 - CELLS 1 & 2 WERE SURVEYED BY RIVERVIEW CONSTRUCTION, INC., WAUSAU, WI, OCTOBER 21, 2021.
 - AUXILIARY SEDIMENT TRAPS WILL BE CONSTRUCTED AS NECESSARY DURING DEVELOPMENT OF EACH CELL.

Note:
 Volumes are in-place volumes. Quantities are subject to change based on in-field conditions at the time of construction. System appurtenances are not included in quantities.

Note:
 Volumes are in-place volumes. Quantities are subject to change based on in-field conditions at the time of construction. System appurtenances are not included in quantities.



**WESTON DISPOSAL SITE NO. 3
 EXPANSION
 PLAN OF OPERATION
 MODIFICATION**



CELL 6 BASE LINER CONSTRUCTION QUANTITIES

COMPOSITE LINER	
Topsail Stockpile Volume	13,500 CY
Structural Fill	57,700 CY
Geotextile, gradient control trench	1,100 SY
Select Aggregate, gradient control trench	160 CY
Select Granular Fill, gradient control system	2,040 CY
Compacted Clay	22,300 CY
Cell Delineation Berm	1,140 LF
Geosynthetic Clay Liner	33,400 SY
60-mil Textured HDPE Geomembrane	33,400 SY
Geotextile Cushion	1,900 SY
Select Aggregate, leachate collection system	710 CY
Select Granular Fill, leachate collection system	1,100 CY
Perimeter Access Road	490 LF
PIPE	
Leachate Headwell Pipe	330 LF
3-inch Inside 6-inch Forcemain Extension	230 LF
Leachate Collection Pipe, perforated	1,060 LF
Leachate Collection Pipe, solid	105 LF
Gradient Control Pipe, perforated	1,060 LF
Gradient Control Pipe, solid	330 LF
Riser Pipe, perforated	30 LF
Riser Pipe, solid	105 LF
Perimeter Access Manhole	2 EA
Submersible Pump with Control Panel	2 EA
Cleanout	2 EA
Abandon Monitoring Well	2 EA

Note:
 Volumes are in-place volumes. Quantities are subject to change based on in-field conditions at the time of construction. System appurtenances are not included in quantities.

AREA D FINAL COVER CONSTRUCTION QUANTITIES

COMPOSITE LINER	
Select Clay or Soil Barrier Layer	23,100 CY
GCL (if soil barrier layer is utilized)	34,600 SY
40-mil Geomembrane	34,600 SY
Geocomposite Drainage Layer	34,600 SY
General Fill, Rooting Zone	28,900 CY
4-inch Diameter Drainage Pipe	700 LF
Surface Water Diversion Berm	1 LF
Topsail	5,800 CY
Toe Drain Outlet	2 EA

Note:
 Volumes are in-place volumes. Quantities are subject to change based on in-field conditions at the time of construction. System appurtenances are not included in quantities.

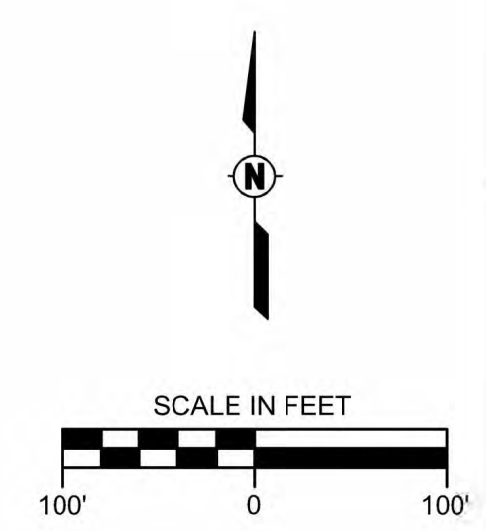
- NOTES:**
- REFER TO PLAN SHEET 2 OF THE PLAN SET FOR LEGEND AND BASE MAP NOTES.
 - CELLS 1 & 2 WERE SURVEYED BY RIVERVIEW CONSTRUCTION, INC., WAUSAU, WI, OCTOBER 21, 2021.
 - AUXILIARY SEDIMENT TRAPS WILL BE CONSTRUCTED AS NECESSARY DURING DEVELOPMENT OF EACH CELL.

P.E. No.:
 Approved: JXT
 Checked: JXT
 Drawn: JLC
 Designed: JLC
 GEI Project: 2203724

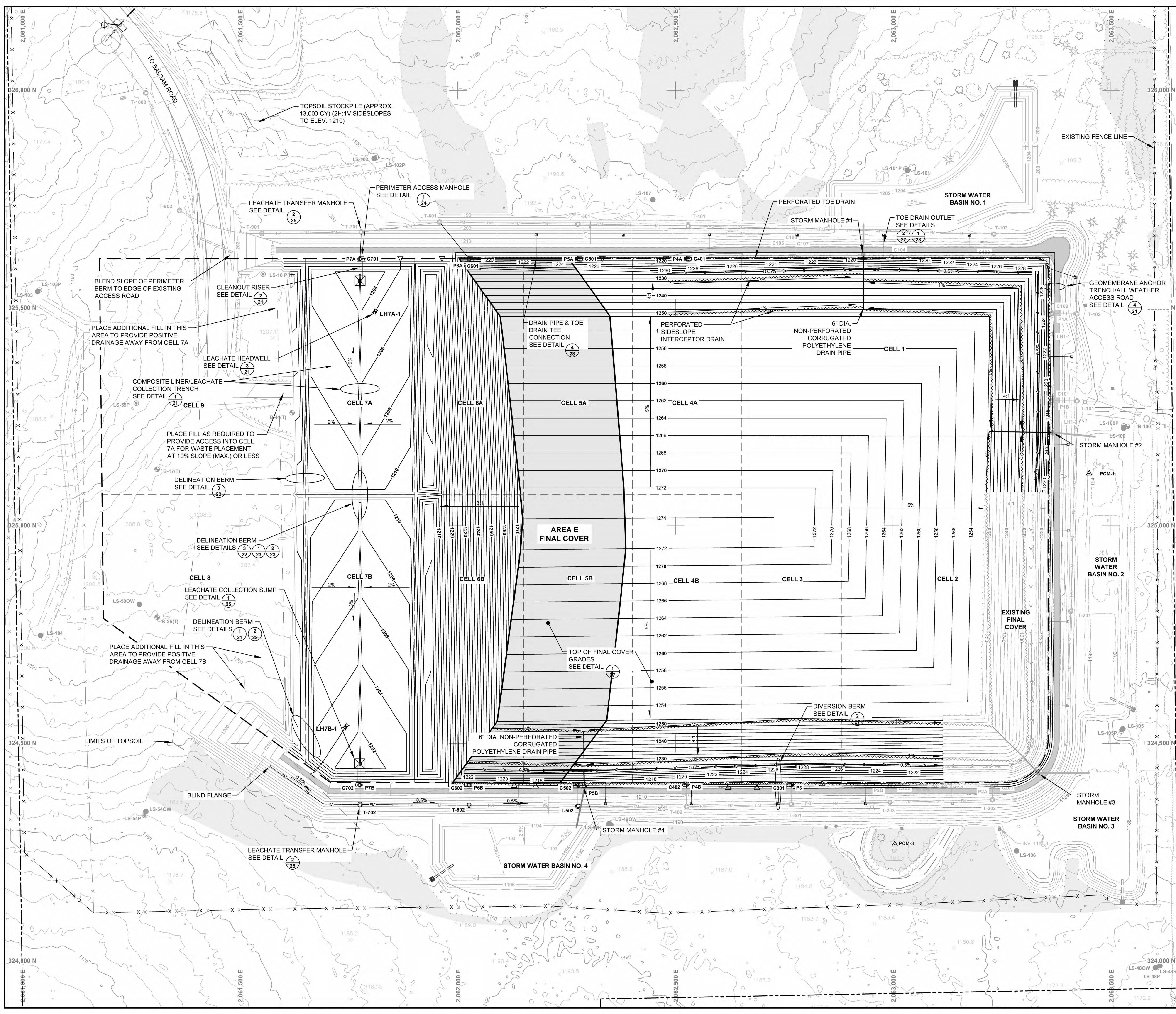
NO.	DATE	ISSUE/REVISION	APP
1	9/29/2023	PLAN MOD	JXT

Attention: 1"
 If this scale bar does not measure 1" then drawing is not original scale.

CELL 6 SITE PREPARATION, AREA D CLOSURE



**WESTON DISPOSAL SITE NO. 3
 EXPANSION
 PLAN OF OPERATION
 MODIFICATION**



CELL 7 BASE LINER CONSTRUCTION QUANTITIES

COMPOSITE LINER	
Topsoil Stockpile Volume	14,000 CY
Structural Fill	43,300 CY
Geotextile, gradient control trench	1,100 SY
Select Aggregate, gradient control trench	160 CY
Select Granular Fill, gradient control system	2,080 CY
Compacted Clay	22,300 CY
Cell Delineation Berm	1,100 LF
Geosynthetic Clay Liner	33,400 SY
60-mil Textured HDPE Geomembrane	33,400 SY
Geotextile Cushion	1,900 SY
Select Aggregate, leachate collection system	710 CY
Select Granular Fill, leachate collection system	11,100 CY
Perimeter Access Road	450 LF
PIPE	
Leachate Headwell Pipe	280 LF
3-inch Inside 6-inch Forcemain Extension	310 LF
Leachate Collection Pipe, perforated	1,070 LF
Leachate Collection Pipe, solid	90 LF
Gradient Control Pipe, perforated	1,070 LF
Gradient Control Pipe, solid	310 LF
Riser Pipe, perforated	30 LF
Riser Pipe, solid	90 LF
Perimeter Access Manhole	2 EA
Submersible Pump with Control Panel	2 EA
Cleanout	2 EA
Abandon Monitoring Well	5 EA

Note:
 Volumes are in-place volumes. Quantities are subject to change based on in-field conditions at the time of construction. System appurtenances are not included in quantities.

AREA E FINAL COVER CONSTRUCTION QUANTITIES

COMPOSITE LINER	
Select Clay or Soil Barrier Layer	22,000 CY
GCL (if soil barrier layer is utilized)	33,100 SY
40-mil Geomembrane	33,100 SY
Geocomposite Drainage Layer	33,100 SY
General Fill, Rooting Zone	27,500 CY
4-inch Diameter Drainage Pipe	1,000 LF
Surface Water Diversion Berm	240 LF
Topsoil	5,800 CY
Toe Drain Outlet	2 EA
Downslope Flume	1 EA

Note:
 Volumes are in-place volumes. Quantities are subject to change based on in-field conditions at the time of construction. System appurtenances are not included in quantities.

- NOTES:**
- REFER TO PLAN SHEET 2 OF THE PLAN SET FOR LEGEND AND BASE MAP NOTES.
 - CELLS 1 & 2 WERE SURVEYED BY RIVERVIEW CONSTRUCTION, INC., WAUSAU, WI, OCTOBER 21, 2021.
 - AUXILIARY SEDIMENT TRAPS WILL BE CONSTRUCTED AS NECESSARY DURING DEVELOPMENT OF EACH CELL.

P.E. No.:
 Approved: JXT
 Checked: JXT
 Drawn: JLC
 Designed: JLC
 GEI Project: 2203724

Attention: 1"
 If this scale bar does not measure 1" then drawing is not original scale.

NO.	DATE	ISSUE/REVISION	APP
1	9/29/2023	PLAN MOD	JXT

CELL 7 SITE PREPARATION, AREA E CLOSURE