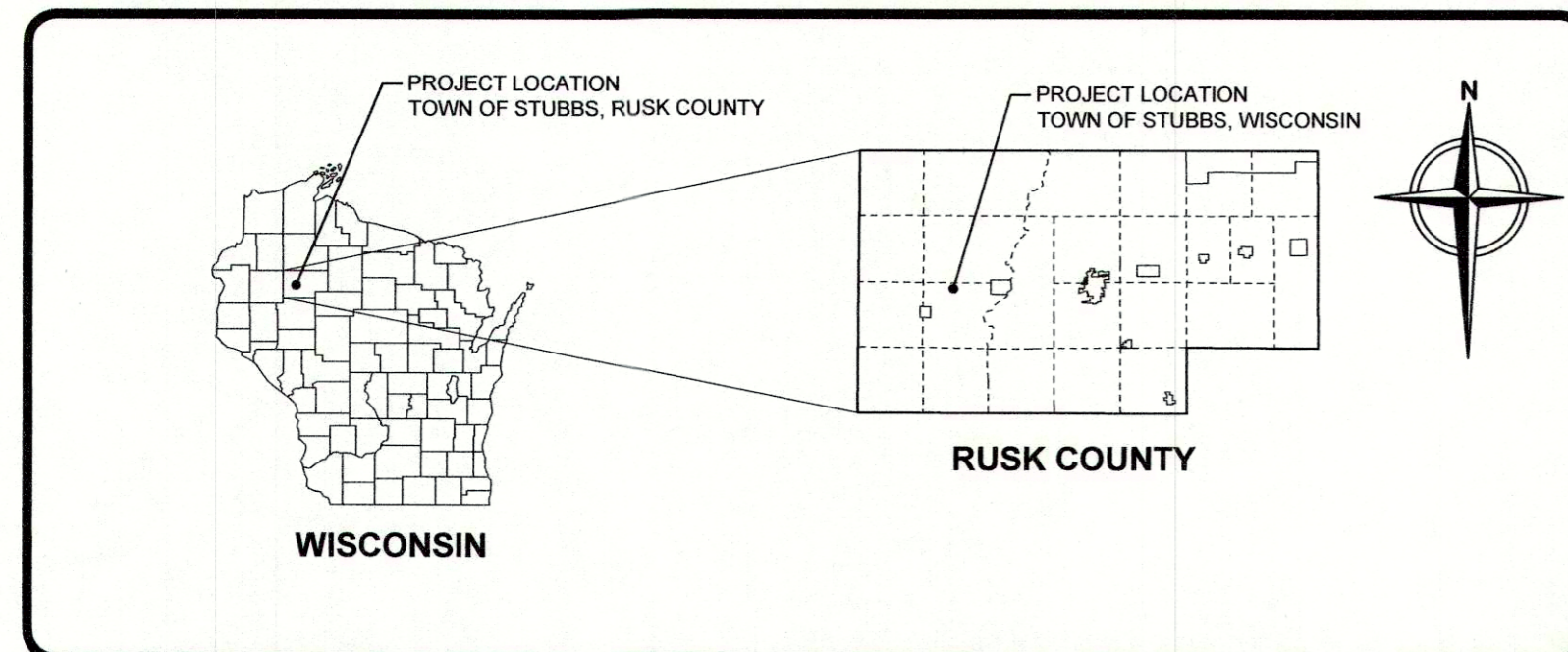
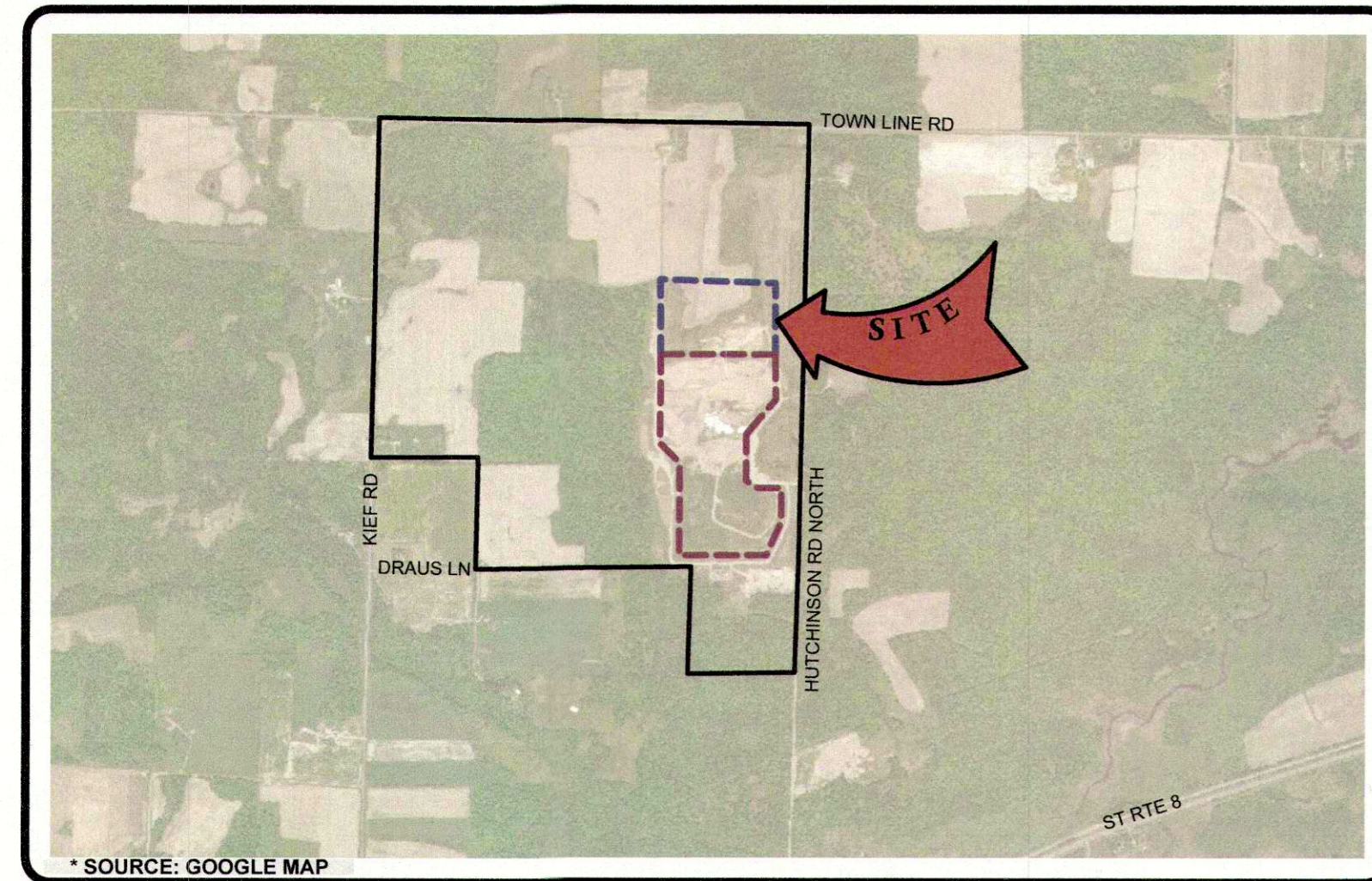


FEASIBILITY REPORT NORTHERN EXPANSION NO. 2

PREPARED FOR
WASTE MANAGEMENT OF WISCONSIN, INC.
TIMBERLINE TRAIL RDF

**TOWNSHIP OF STUBBS,
RUSK COUNTY, WISCONSIN**

AUGUST 2025



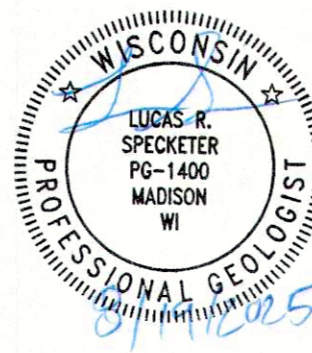
LOCATION MAPS



PREPARED BY:



8040 EXCELSIOR DRIVE
SUITE 305
MADISON, WISCONSIN, 53717
Tel. (877) 294-9070



This drawing represents intellectual property of Tetra Tech. Any modification to the original by other than Tetra Tech personnel violates its original purpose and as such is rendered void. Tetra Tech will not be held liable for any changes made to this document without express written consent of the originator.



PROJECT NO. 4251388

INDEX OF DRAWINGS

01	COVER SHEET
02	STANDARD LEGEND AND GENERAL NOTES
03	EXISTING CONDITIONS
04	GEOLOGIC CROSS SECTION LOCATION MAP
05	GEOLOGIC CROSS SECTION A-A'
06	GEOLOGIC CROSS SECTION B-B'
07	GEOLOGIC CROSS SECTION C-C'
08	GEOLOGIC CROSS SECTION D-D'
09	GEOLOGIC CROSS SECTION E-E'
10	GEOLOGIC CROSS SECTION F-F'
11	GEOLOGIC CROSS SECTION G-G'
12	GEOLOGIC CROSS SECTION H-H'
13	GEOLOGIC CROSS SECTION I-I'
14	GEOLOGIC CROSS SECTION J-J'
15	GEOLOGIC CROSS SECTION K-K'
16	GEOLOGIC CROSS SECTION L-L'
17	GEOLOGIC CROSS SECTION M-M'
18	GEOLOGIC & POTENTIOMETRIC CROSS SECTION N-N'
19	HIGH WATER TABLE MAP WITH FLOW NET (JANUARY 2025)
20	LOW WATER TABLE MAP (MAY 2024)
21	APPROVED AND PROPOSED SUBBASE GRADES
22	APPROVED AND PROPOSED BASE GRADES
23	MAXIMUM INTERMEDIATE WASTE GRADES
24	PROPOSED FINAL COVER WITH CLOSURE SEQUENCE
25	ENVIRONMENTAL MONITORING AND LONG TERM CARE PLAN
26	DETAILS

