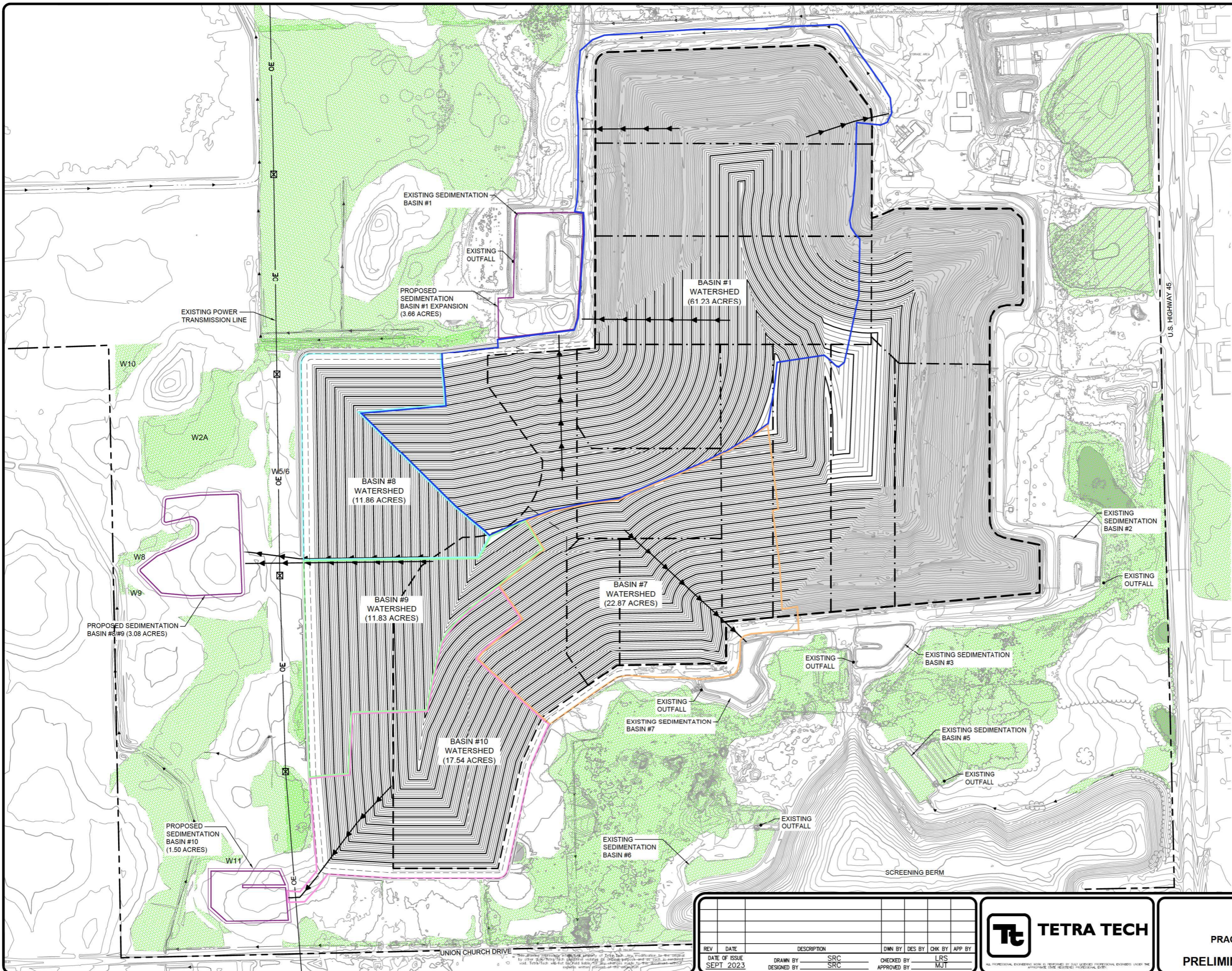


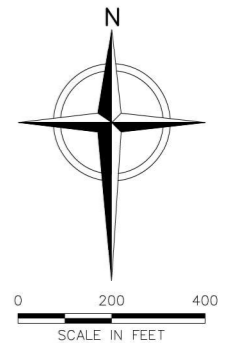
**ATTACHMENT 5 – PRELIMINARY WATERSHED BOUNDARY AND
STORMWATER BASIN DESIGN PLAN SHEET**

1" = 1/2" = 0'
 File: X:\PROJECTS\EMERALD PARK\4221384 - 2022 FEASIBILITY RESPONSE\Drawn_SAV\12-FEAS-5-SP_WATERSHED.dwg Layout: 12 User: SHAWN CLAWSON Sep 19, 2023 - 12:46pm



- LEGEND**
- PROPERTY BOUNDARY
 - PERMITTED SOLID WASTE BOUNDARY
 - - - PHASE DELINEATION
 - FINAL COVER (CLOSED) AREA
 - WETLAND
 - EXISTING 2' CONTOUR
 - 1400 --- EXISTING 10' CONTOUR
 - 1400 --- PROPOSED 2' CONTOUR
 - PROPOSED 10' CONTOUR
 - PROPOSED STORM WATER BASIN
 - PROPOSED DOWNSLOPE FLUME
 - BASIN #1 BOUNDARY
 - BASIN #7 BOUNDARY
 - BASIN #8 BOUNDARY
 - BASIN #9 BOUNDARY
 - BASIN #10 BOUNDARY

- NOTE:**
1. EXISTING CONTOURS ARE BASED ON SURVEYS PERFORMED ON APRIL 16, 2013 BY AYRES ASSOCIATES AND SEPTEMBER 29, 2022 BY TETRA TECH
 2. SEDIMENTATION BASIN #8/#9 WAS REVISED TO AVOID WETLAND W8. CREST OF BASIN BERM IS OFFSET 35' FROM WETLAND W8.



REV	DATE	DESCRIPTION	OWN BY	DES BY	CHK BY	APP BY

DATE OF ISSUE SEPT 2023	DRAWN BY SRC	CHECKED BY LRS
DESIGNED BY SRC	APPROVED BY MJT	



GFL ENVIRONMENTAL
 EMERALD PARK LANDFILL
 MUSKEGO, WISCONSIN
PRACTICAL ALTERNATIVES ANALYSIS
 WESTERN EXPANSION
PRELIMINARY WATERSHED BOUNDARY

SHEET NO.
12
 PROJECT NO.
 4221384