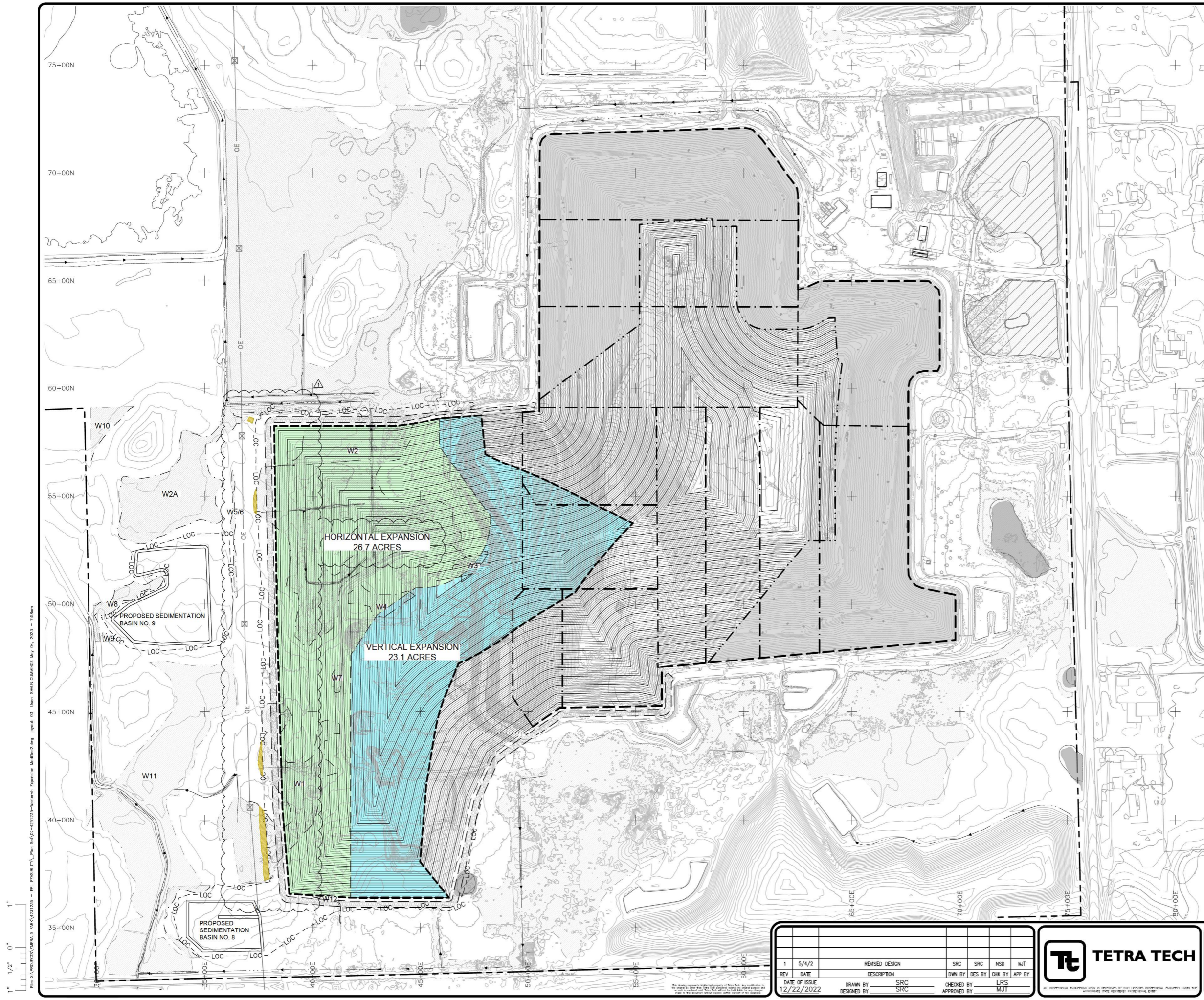


**ATTACHMENT 3 – PAA ALTERNATIVE 1 WESTERN EXPANSION PLAN
SHEET (REVISED)**



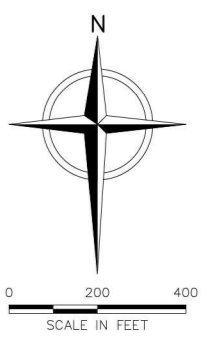
LEGEND

	APPROXIMATE PROPERTY LINE
	PAVED ROAD
	UNPAVED ROAD
	FENCE
	BUILDING
	10' CONTOUR
	2' CONTOUR
	TREES AND/OR BRUSH
	DELINEATED WETLAND
	WETLAND ID PER 2015 DELINEATION REPORT
	MANMADE SURFACE WATER BODY
	SURFACE WATER BODY
	WETLANDS NO LONGER IMPACTED (SEE NOTE 6)
	GRID INTERSECTION
	PERMITTED LIMITS OF WASTE
	OVERHEAD ELECTRIC LINE
	DRAINAGE DITCH AND FLOW DIRECTION
	APPROXIMATE LIMITS OF FINAL COVER
	PROPOSED PERIMETER ROAD AND BERM
	PROPOSED LIMITS OF CONSTRUCTION
	PROPOSED FINAL WASTE 10' CONTOUR
	PROPOSED FINAL WASTE 2' CONTOUR
	PROPOSED EXPANSION LIMITS
	PROPOSED HORIZONTAL EXPANSION AREA
	PROPOSED VERTICAL EXPANSION AREA

WESTERN EXPANSION VOLUME SUMMARY

CUT (CY)	FILL (CY)	NET (CY)
0	7,178,000	7,178,000 (FILL)

- NOTES:**
1. WETLANDS ON THIS DRAWING ARE A COMBINATION OF 2015, 2009 AND EARLIER DELINEATIONS. SEE FIGURE NO. 2 FOR ADDITIONAL WETLAND INFORMATION.
 2. PROPOSED CONTOURS ARE TOP OF WASTE
 3. WASTE VOLUMES ARE APPROXIMATE AND SUBJECT TO CHANGE.
 4. APPROXIMATELY 14.8 ACRES OF WETLANDS WILL BE DIRECTLY IMPACTED BY THE PROPOSED WESTERN EXPANSION, INCLUDING ALL OR PORTIONS OF W1, W2, W2A, W5/6 AND W8. APPROXIMATELY 1.3 ACRES OF WETLANDS WILL HAVE ALREADY BEEN DIRECTLY IMPACTED BY CONSTRUCTION OF THE CURRENTLY PERMITTED EPL AND LIMITS OF CONSTRUCTION, INCLUDING ALL OR PORTIONS OF W1, W2, W3, W4, W7 AND W12.
 5. ADDITIONAL SURVEY AND SITE FEATURES INFORMATION PROVIDED ON FIGURE NO. 2
 6. THIS ALTERNATIVE WAS MODIFIED BY MOVING THE WESTERN LIMITS EAST. THIS RESULTED IN 1.6 ACRES REDUCTION IN WETLANDS BEING IMPACTED WITH PROPOSED LANDFILL CONSTRUCTION. THOSE AREAS NO LONGER TO BE IMPACTED BY CONSTRUCTION ARE SHOWN ON THIS DRAWING.



File: X:\PROJECTS\EMERALD PARK\421235 - Western Expansion Mod\fig2.dwg
 User: SHAUN CUMMINGS
 Date: 04/20/2023 7:28am
 Scale: 1" = 100'

REV	DATE	DESCRIPTION	DWN BY	DES BY	CHK BY	APP BY
1	5/4/2	REVISED DESIGN	SRC	SRC	NSD	MJT
DATE OF ISSUE			DRAWN BY		CHECKED BY	
12/22/2022			SRC		LRS	
			DESIGNED BY		APPROVED BY	
			SRC		MJT	



GFL ENVIRONMENTAL
 EMERALD PARK LANDFILL
 MUSKEGO, WISCONSIN
PRACTICAL ALTERNATIVES ANALYSIS
WESTERN EXPANSION
ALTERNATIVE 1 - WESTERN EXPANSION

FIGURE NO.
03
 PROJECT NO.
 4221384