

Northern Highland - American Legion State Forest

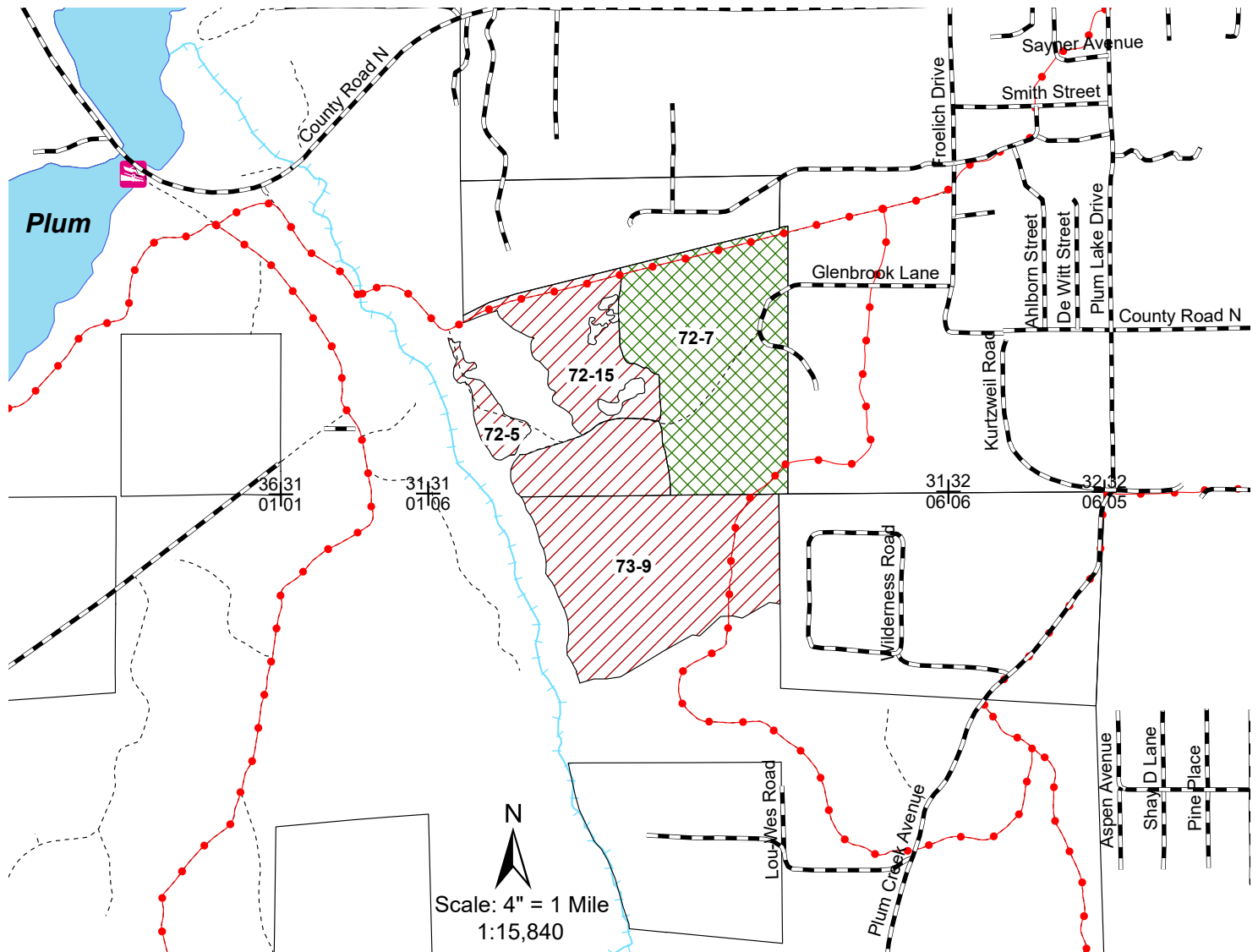
C72H Stands 5, 7 & 15; C73H Stand 9

Tetris Timber 148 Acres

Town of Plum Lake T41N, R8E, Section 31

Town of St. Germain T40N, R8E, Section 6

NHAL - SF Master Plan Mgmt Area 4 - Vilas Sandy Plains Central - Forest Production



Scale: 4" = 1 Mile
1:15,840

Legend

- Section Corner
- Boat Landing
- Town and County Roads
- Snowmobile Trails
- Woods Roads
- Rivers and Streams
- Lakes
- Pine Thinning Area
- Aspen Area

Area 4: Vilas Sandy Plains Central

C72H Stand 5 (5 Acres) is a large sawlog size red and white pine stand with an origin year of 1900. This stand will receive a thinning to improve the health and vigor of the remaining stems.

C72H Stand 7 (55 Acres) is an aspen stand with an origin year of 1973. This stand will undergo a coppice with standards to regenerate the aspen and retain it on the landscape.

C72H Stand 15 (36 Acres) is a 57 year old red pine plantation that will undergo an intermediate thinning to improve the spacing, health, and vigor of the remaining stems.

C73H Stand 9 (52 Acres) is a large sawlog size red and white pine stand with an origin year of 1900. This stand will receive a thinning to improve the health and vigor of the remaining stems.

