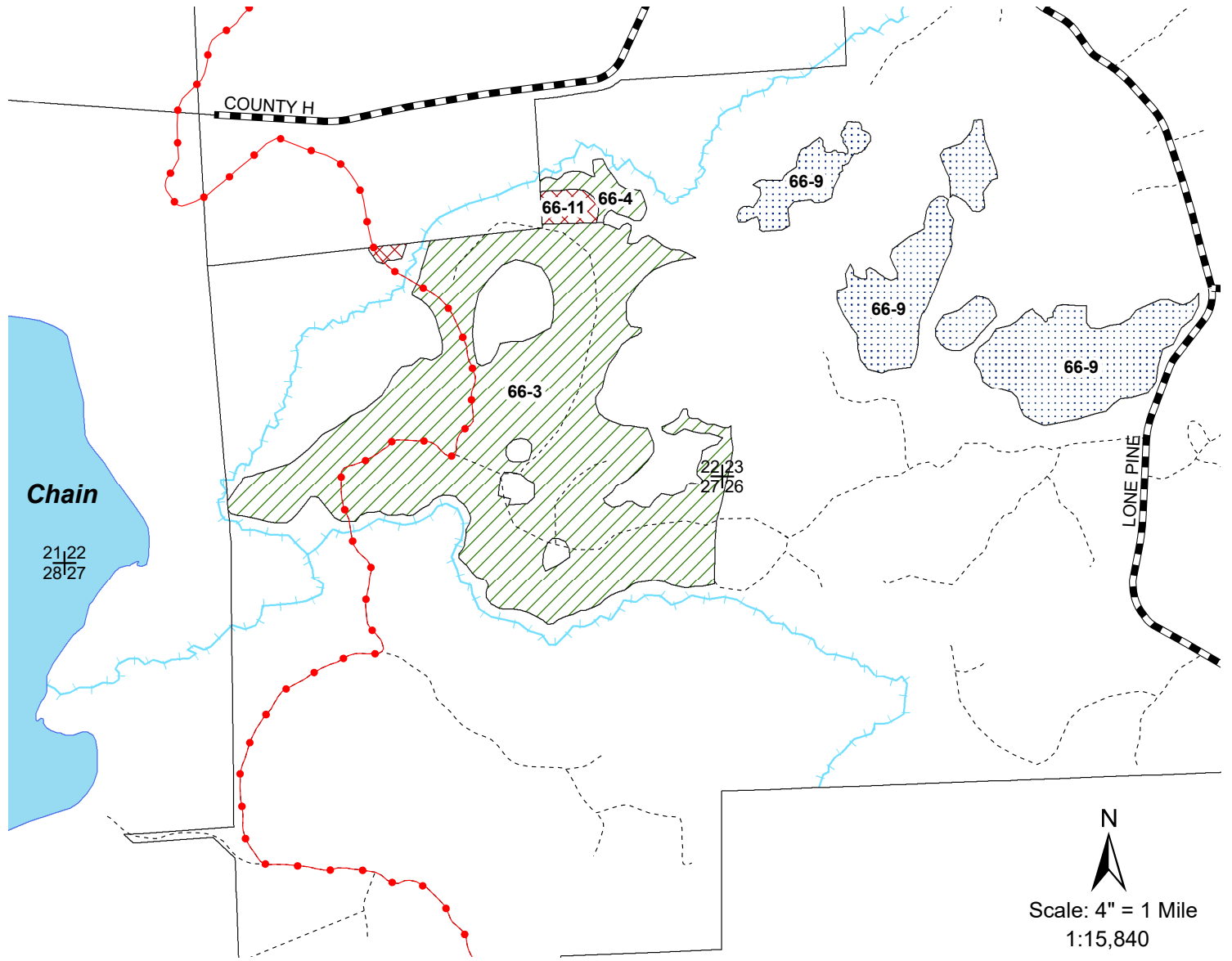


Northern Highland - American Legion State Forest
C66A Stands 3, 4, 9, and 11
South Kathlan Aspen 215 Acres
Town of Sugar Camp T39N, R9E, Sections 22, 23, 26 & 27
NHAL - SF Master Plan Mgmt Area 6 - Oneida Sandy Plains - Forest Production



N

 Scale: 4" = 1 Mile
 1:15,840

Legend

- Section Corner
- Town and County Roads
- Snowmobile Trails
- Woods Roads
- Black Spruce
- Aspen Area
- Pine Area
- Lakes
- Rivers and Streams

Area 6: Oneida Sandy Plains

C66A Stand 3 (147 Acres) is an aspen stand with an origin year of 1976. This stand will be regenerated using a coppice with standards to maintain aspen on the landscape.

C66A Stand 4 (4 Acres) is an aspen and balsam fir stand that will be regenerated using a coppice with standards to maintain aspen on the landscape.

C66A Stand 9 (60 Acres) is comprised of black spruce. Where practical this stand will be regenerated using either strip clear cut or seedtree methods.

C66A Stand 11 (4 Acres) is comprised of large sawlog red pine. This stand will receive a thinning to promote the health and vigor of the remaining stems.