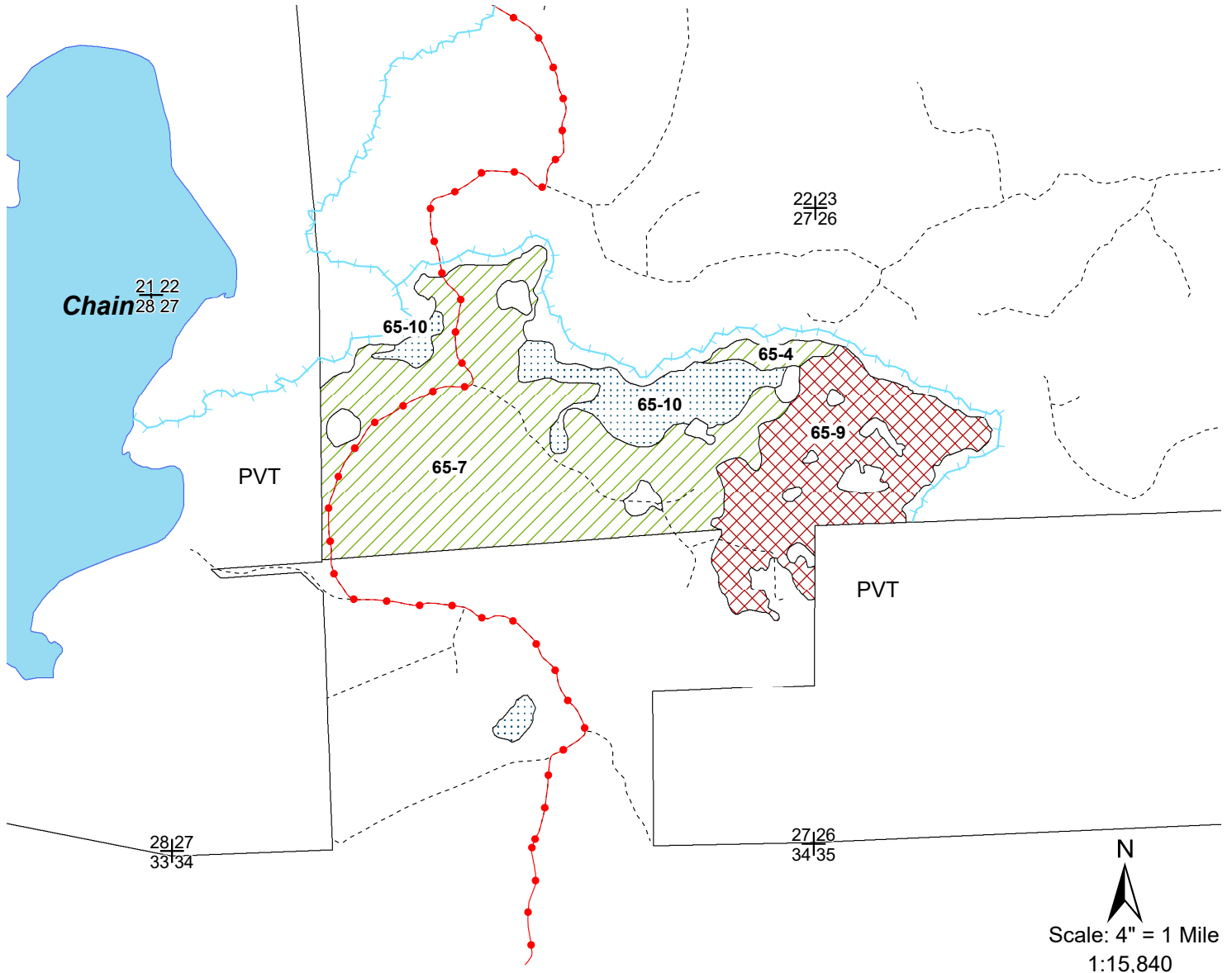


Northern Highland - American Legion State Forest
C65A Stands 4, 7, 9, and 10
Chain Reaction Aspen 195 Acres
Town of Sugar Camp T39N, R9E, Sections 26 & 27
NHAL - SF Master Plan Mgmt Area 6 - Oneida Sandy Plains - Forest Production



Legend

- ⊕ Section Corner
- ⦿ Rivers and Streams
- ▬ Town and County Roads
- Snowmobile Trails
- ⋯ Woods Roads
- ▒ Black Spruce
- ▤ Pine Area
- ▦ Aspen Area
- Lakes

Area 6: Oneida Sandy Plains

C65 Stand 4 (4 Acres) is comprised of pole size aspen and balsam fir. This stand will be regenerated using a coppice with standards to maintain the aspen.

C65 Stand 7 (114 Acres) is a 47 year old aspen stand. The aspen will be regenerated using a coppice with standards to maintain the species on the landscape.

C65 Stand 9 (53 Acres) is a small sawlog size red pine plantation that originated in 1954. This stand will be thinned to improve the health and vigor of the remaining stems.

C65 Stand 10 (24 Acres) is comprised of black spruce. Where practical this stand will be regenerated using either strip clear cut or seedtree methods.

