

Northern Highland – American Legion State Forest

C4H Stand 1 C5H Stands 2, P6, P8 & P11

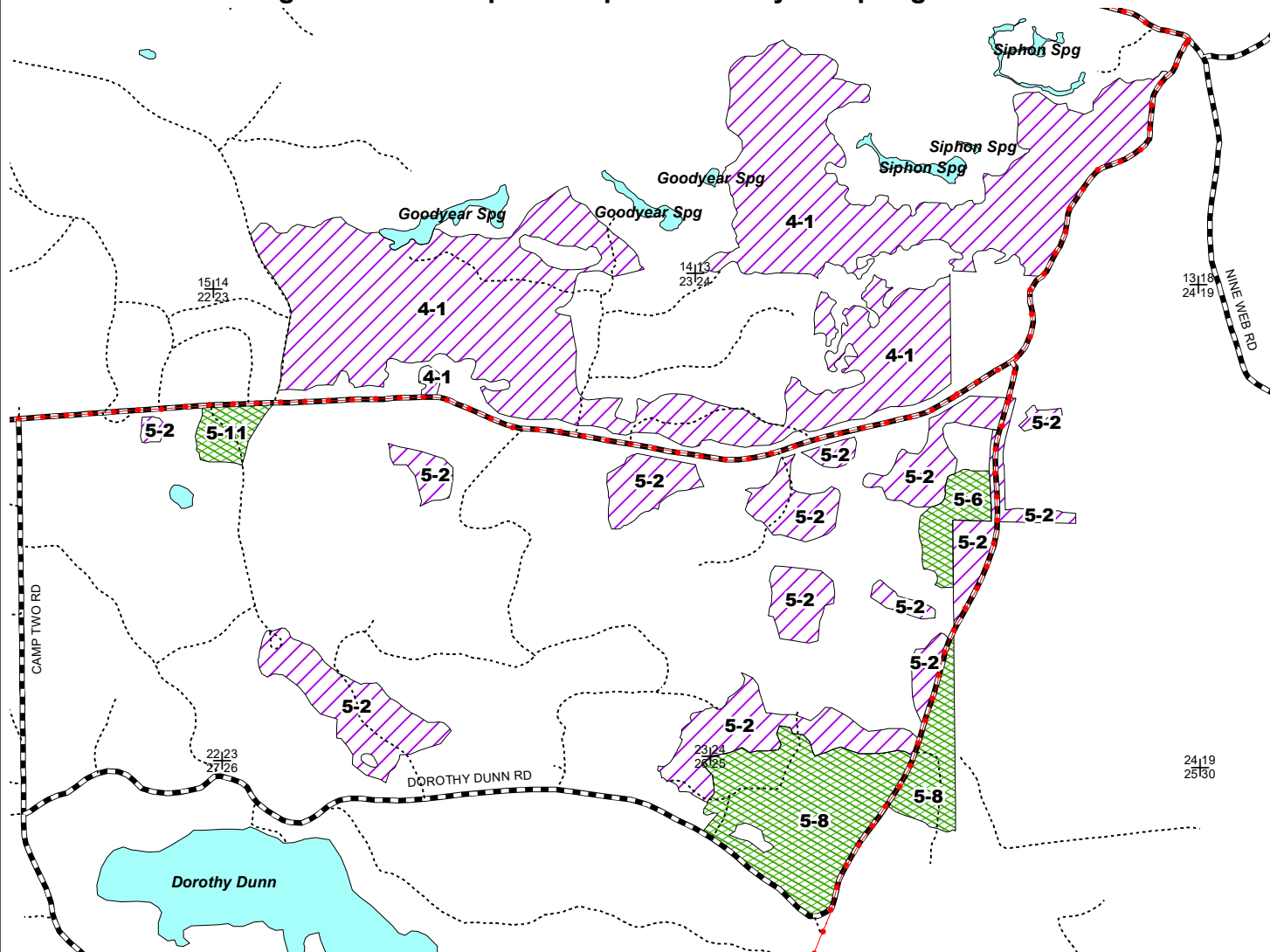
Camp Two Road Aspen and Pine 561 acres

Town of Plum Lake, Vilas County

T42N R8E Sec. 13, 14, 22, 23 & 24

NHAL – SF Master Plan: Mgmt. Area 3 – Vilas Sandy Plains North – Forest Production

Mgmt. Area 13 - Special Aquatic - Goodyear Springs East



Scale: 3" = 1 Mile
1:22,000



Map produced by
Todd Anderson &
Paul Schultz, 2/19

Legend

- ✚ Section Corner
- Woods Roads
- Snowmobile Trails
- == Highways and Town Roads
- Aspen Stands
- Red Pine Plantation
- Lakes

C4H – Stand 1 (330 acres): This stand is comprised of aspen with an origin year of 1972. Scattered throughout are sawlog red and white pine trees. A coppice with standards regeneration harvest will be conducted to maintain early successional aspen as the primary cover type. Scattered mature red and white pine also will be harvested. A small portion, about 10 acres, of this stand within Area 13 -Goodyear Springs East. The Master Plan calls for the maintenance of aspen in the upland areas of Area 13.

C5H – Stand 2 (141 acres): This stand is comprised of aspen with an origin year of 1963. They cover 12 stands, ranging in size from 1 to 28 acres. These stands, like stand 1 above, will undergo a coppice with standards harvest to regenerate the aspen.

C5H – Stand P6 (12 acres): This is a moderately stocked poletimber red pine plantation planted in 1990. Portions of the stand have failed. Where the plantation has failed, it will be clearcut and replanted to Jack Pine, which is more suitable to the site. The remainder of the stand will be thinned to promote the growth and vigor of the remaining crop trees.

C5H – Stand P8 (78 acres) and Stand P11 (9 acres): These two stands are well stocked small sawlog red pine with an origin year of 1934. They differ in that stand P8 has about 40 square feet BA of white pine small sawlog, whereas stand P11 is more homogenous. These stands will be thinned to reduce stocking, and to promote optimal growth and vigor.