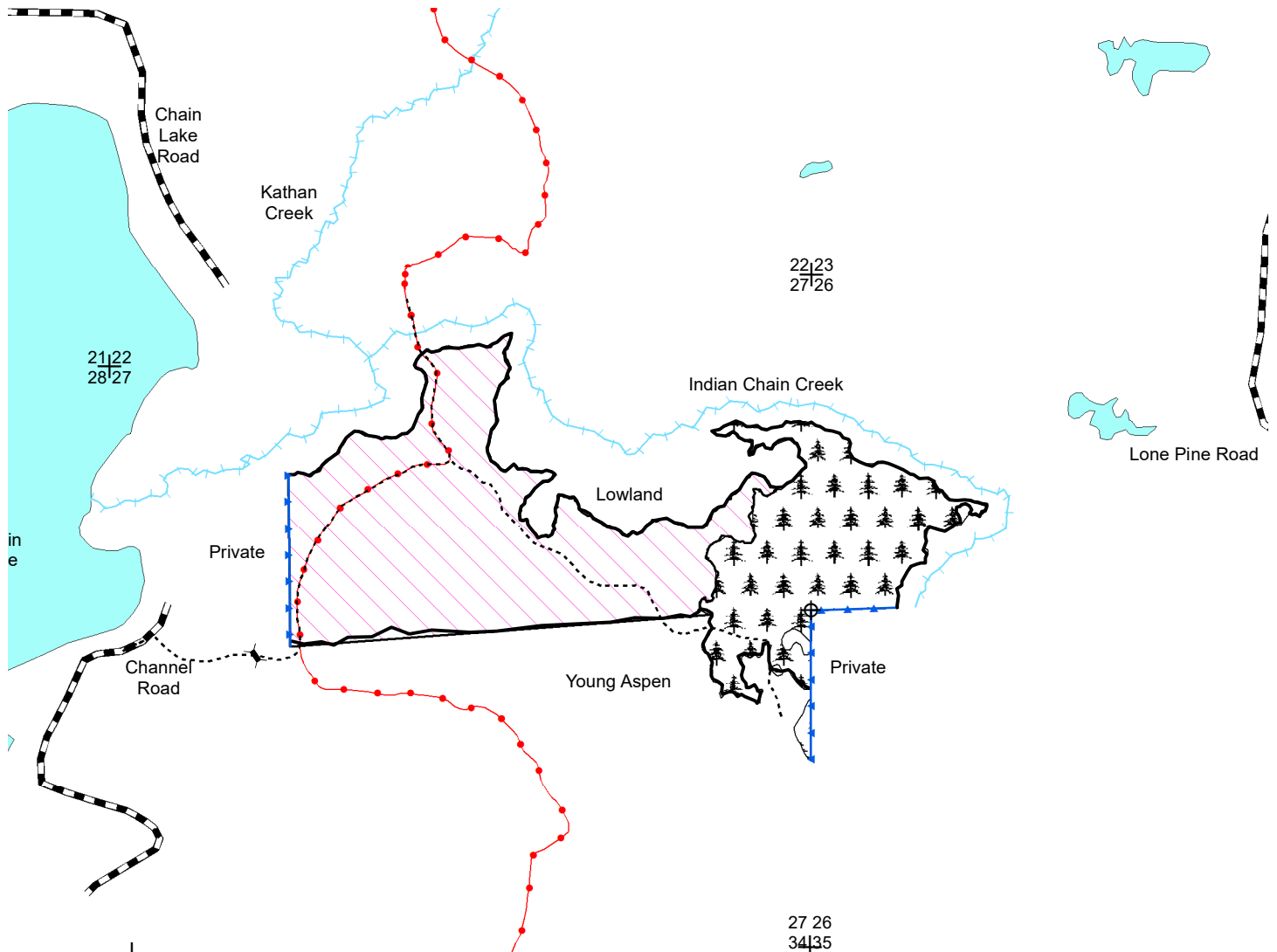


**WISCONSIN
DEPARTMENT OF NATURAL RESOURCES
TIMBER SALE
TRACT 13-21 Chain Reaction
T39N R9E SECTION 26, 27
HARVEST ACRES - 171**



Legend

- Section Corner
- Survey Marker
- Woods Roads
- Snowmobile Trails
- Highways and Town Roads
- Rivers and Streams
- Lakes
- Gates
- Blue Line
- Red Line

- Aspen Area (114 Acres): Cut all aspen, maple, and balsam fir not marked in paint, one inch and larger.
- Red Pine Plantation (57 Acres): Cut all trees marked with orange paint.

Note: Do NOT cut trees marked with green paint.

All stands are within management unit 6:
Oneida sandy plains forest production area

N
Scale: 4" = 1 Mile
1:15,840



Map produced by
Sean Davison 02-21

This map is not a survey of the actual boundary of any property that this map depicts.

NH-ALSF TRACT NO. 13-21

Chain Reaction

Oneida County

Township 39N Range 9 East (Sugar Camp Township):

Section 26 – NWNW, SWNW, SENW

Section 27 – NENW, SENW, NESW, NWSE, NESE, NE1/4

No bid bond required.

15% of the total sale bid value will be required for performance bond or \$1,000.00 or whichever is greater.

The cutting area is approximately 171 acres.

The contract period is 3 years.

Whole tree biomass harvest is NOT allowed.

ESTIMATED VOLUME (TONS)

MINIMUM TOP DIAMETER

<u>SPECIES</u>	<u>4"</u>
Red Pine ¹	470
Balsam Fir	775
Aspen ²	3700

Total Minimum Bid Value: \$ 52,262.00

PR¹: Approximately 76% Red Pine, 22% White Pine, 1% Jack Pine, 1% Spruce. Volume includes approximately 29 MBF Red Pine and 8 MBF White Pine of potential saw logs (PR Wt. Ave. conversion 2.21 tons/cord)

A²: Approximately 95% Aspen, 5% Red Maple. Volume includes approximately 3 MBF Red Maple, (Aspen Wt. Ave. conversion 2.25 tons/cord).

Balsam Fir 100% (F Wt. conversion 2.125 tons/cord)

Total sale volume equates to 36 tons/acre or 16 cords/acre to a 4-inch top.

Special Conditions:

1. Cutting must be concurrent for all species to be harvested.
2. No tops or slash allowed across any blue line, red line or within any wetland/keg areas. Slash must be lopped and scattered to within 2 feet of the ground and pulled back into the sale area a minimum of 10 feet from wetlands, blue property lines and public roads.
3. Do not cut, knock down or utilize any dead standing snags unless they pose an operational safety risk.
4. Soil rutting and damage to residual trees will NOT be tolerated.
5. If the contract is to be worked on during multiple time periods a mid-contract "pull-off" inspection meeting will be required. One-week notice shall be given by the contractor prior to moving equipment off-site. During the "pull-off" inspection provisions needing attention will be documented. The contractor can decide to remedy issues before pulling off or rectify them when moving back onto the site. If the latter is chosen documented items shall be addressed before harvesting can continue.
6. No new roads or landings without prior approval from sale administrator.
7. All pine products cut between May 1 and September 1 must be removed from the sale area within three weeks from time of cutting. Pine products cut during the remainder of the year must be removed prior to May 1 of each year.
8. Existing roads will be left in as good or better conditions and remain passable at all times.
9. The snowmobile trail must be kept free of debris and left in good condition for vehicle traffic at all times. If cut in winter the trail must remain snow covered, and signage posted.