



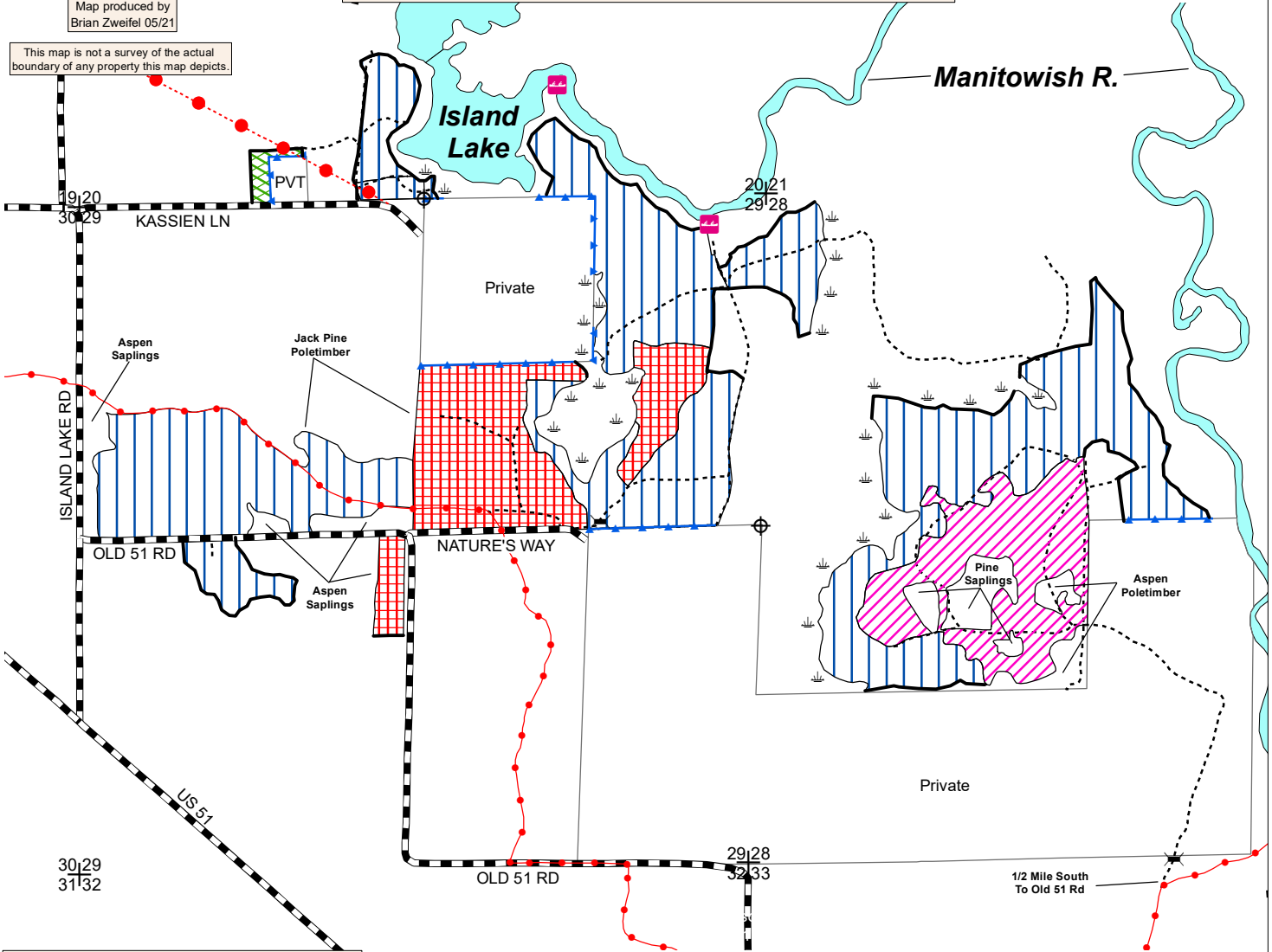
Scale: 4" = 1 Mile  
1:15,840



Map produced by  
Brian Zweifel 05/21

This map is not a survey of the actual boundary of any property this map depicts.

**WISCONSIN  
DEPARTMENT OF NATURAL RESOURCES  
TIMBER SALE  
TRACT 10-21 NATURE'S WAY  
T42N R6E SECTIONS 20, 28, 29  
HARVEST ACRES - 286**



**Legend**

- Gate
- Canoe Campsite
- Section Corner
- Survey Marker
- Keg/Swamp
- Red Line
- Blue Line
- Snowmobile Trail
- Powerline
- Woods Roads
- Highways and Town Roads
- Lakes and Rivers

- Aspen/Pine Mix Area (200 Acres): Cut all trees greater than 2-inch diameter, except red pine, white pine, and white spruce. Cut all trees marked with orange paint.
- Pine Thinning Area (47 Acres): Cut all merchantable jack pine, oak, and orange-marked trees.
- Pine Row Thinning Area (37 Acres): Cut every third row, always leaving at least 1 or 2 rows along outside edges. Harvest all merchantable aspen. Harvest other species only if they fall within the "cut" rows.
- Jack Pine Clearcut Area (2 Acres): Cut all jack pine, oak, and orange-marked trees. Protect white pine regeneration.

All stands lie within Mgmt. Area 3:  
Vilas Sandy Plains North -  
Forest Production Mgmt Area

**Note: Do NOT cut trees marked with green paint.  
Cut all Scots pine greater than 1-inch diameter.**

NH-ALSF TRACT NO. 10-21

Nature's Way

Vilas County

Town 42 North, Range 6 East (Boulder Junction Township)

Section 20 – SESW, SWSE, SESE

Section 28 – NWNE, SWNE, NW ¼, NESW, NWSW

Section 29 – NENE, SWNE, SENE, SWNE, SENW, NESW, NWSW

No bid bond is required.

15% of the total sale bid value will be required for performance bond.

The cutting area is approximately 286 acres.

The contract period is 3 years.

All trees that will yield one or more 100-inch sticks to a 4" top diameter will be cut and utilized.

Whole tree utilization or biomass harvesting is NOT allowed.

---

**ESTIMATED VOLUME (TONS)**  
**MINIMUM TOP DIAMETER**

<u>SPECIES</u>	<u>4"</u>
Red Pine <sup>1</sup>	1550
Jack Pine <sup>2</sup>	1150
Balsam Fir <sup>3</sup>	360
Aspen	7750
Red Oak <sup>4</sup>	360
Mixed Hardwood <sup>5</sup>	750

**Total Minimum Bid Value: \$132,272.00**

---

<sup>1</sup> Approximately 98% red pine and 2% white pine. Includes potential for 86 MBF of red pine and 4 MBF of white pine sawlogs. (Wt. conv. 2.247 tons/cord)

<sup>2</sup> Approximately 98% jack pine and 2% Scots pine (Wt. conv. 2.128 tons/cord)

<sup>3</sup> Approximately 92% balsam fir, 6% white spruce, and 2% black spruce. Includes potential for 2 MBF of white spruce sawlogs. (Wt. conv. 2.114 tons/cord)

<sup>4</sup> Approximately 72% pin oak and 28% red oak. Includes potential for 9 MBF of red oak sawlogs. (Wt. conv. 2.75 tons/cord)

<sup>5</sup> Approximately 56% red maple, 37% white birch, and 7% hard maple. Includes potential for 9 MBF of red maple sawlogs. (Wt. conv. 2.338 tons/cd)

Note: Total sale volume equates to 37 tons/acre or 16.4 cords/acre.

**Special Conditions:**

1. All pine products cut between May 1 and September 1 must be removed from the sale area within three weeks from time of cutting. Pine products cut during the remainder of the year must be removed prior to May 1 of each year.
2. Cutting must be concurrent for all species.
3. Do not cut, knock down or utilize any dead trees unless they pose an operational safety risk.
4. Slash within 50 feet of all roads and trails must be lopped and/or scattered to lie within two feet of the ground and be pulled back 10' behind the tree line concurrently with cutting.
5. Follow WI BMP's for water quality at all times. No equipment is allowed within 15 feet of ephemeral ponds or open water. Avoid wetlands as much as possible and only operate within them during very dry times with timber matting or under frozen ground conditions.
6. The snowmobile trail must be kept free of debris, snow covered in winter, and left in good condition for vehicle traffic at all times.
7. Roads and landings must be approved by the forester in advance of use.