




# SAWYER COUNTY STATE LANDS TIMBER SALE MAP

## Map Codes

## Cutting Specifications

## Estimated Volumes

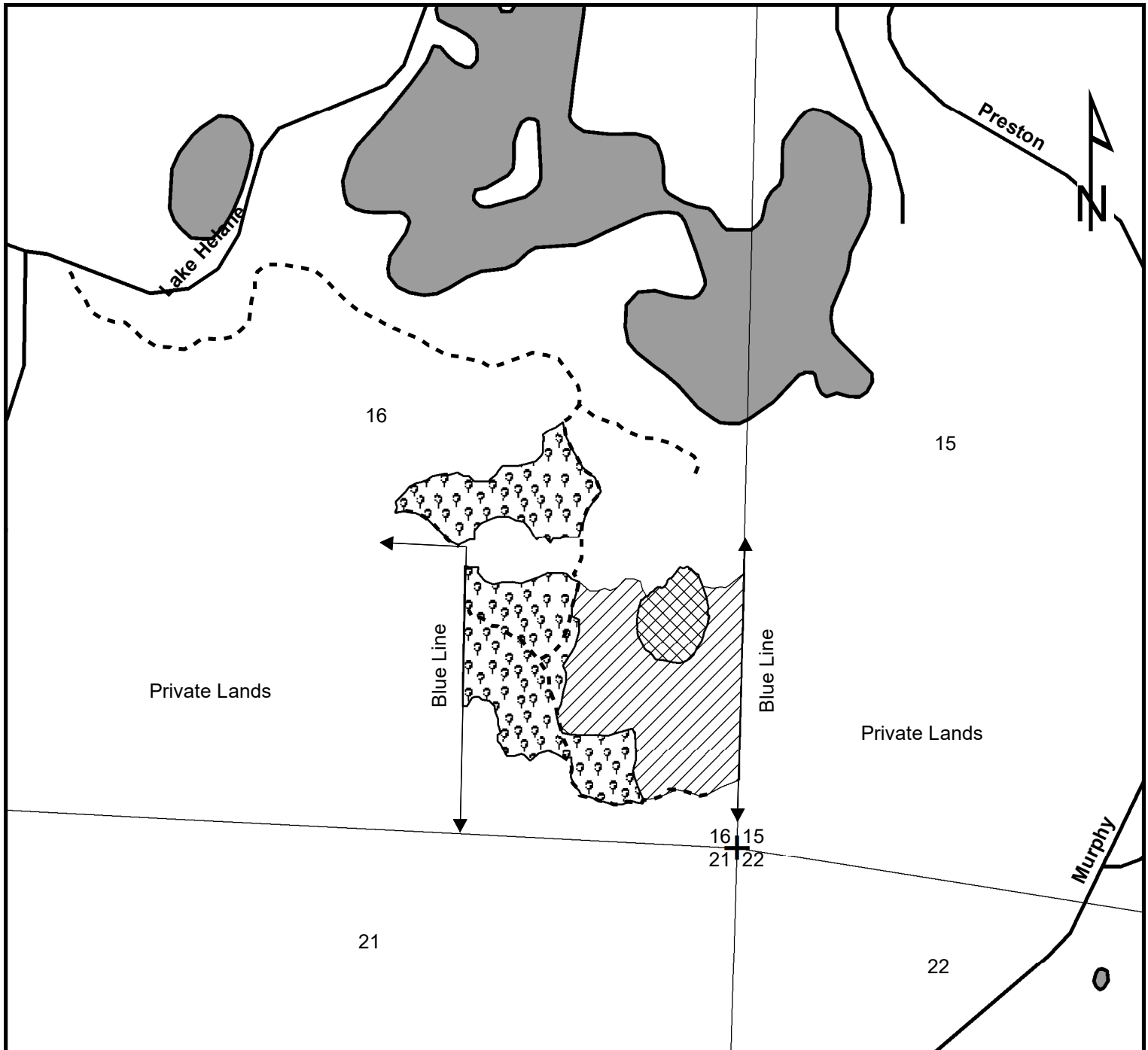
	Select Cut	Cut all trees marked with orange paint Take care not to damage existing regen
	Clear Cut	Harvest all stems 2" in diameter and larger EXCEPT Pine and Oak
	Shelterwood	Harvest all stems 2" in diameter and greater except those marked in purple paint and any Pine

Species	Tons	M B F
MX	460	4
A	335	
OR	135	10

Contractor \_\_\_\_\_

Tract # H07-18 Sale # \_\_\_\_\_ Sale Acreage 29

Legal Description: Section(s) 16 T42N R7W Desc. SE1/4



\*All cutting boundaries lined in red

\*Private Lands cutting boundaries lined with blue

\*Property lines are not survey accurate\*

1 inch = 0.13 miles

Sale Prepared by: Jim Kujala