

Totagatic Lake Wildlife Area

Forester: Kathleen Klow (715) 308-4416		Twp 43N	Range 8W	Sec: 32	Estimated Volumes:	
Total Stand Acres: 101 Total Harvest Acres: 31		Township: Cable			4" Roundwood Tons	
Soil: Loam, Rocky	Regen Code: Natural	Compartment: 1			Species	
Topography: Gentle to Moderate Slopes		Tract Number: 1-21 Tic Tac Totagatic			Aspen 180	
		Contract Number:			*Red Oak 900	
					Red Pine 110	
					White Pine 200	
					Mixed Hrdwds *625	
					Total Minimum Bid: \$14,702.00	
					<p>* Red oak contains approx. 40 MBF. **MX contains approx. 53% basswood, 31% hard maple, 14% soft maple, 2% ash, <1% white birch. MX weighted conversion factor: 2.18 tons/cord. ***MX contains approx. 3 MBF hard maple, 1 MBF soft maple.</p>	

Harvest Unit Requirements:

Harvest Unit 1 (patch selection, 18 acres):

- Patch boundaries are marked with purple paint (on boundary trees: a dot facing the unit, and a slash on three sides for the perimeter).
- **LEAVE UNCUT AND UNDAMAGED** all painted boundary trees, conifers, and trees within patch marked with purple paint. Do not harvest any trees outside of patches except those needed for access. Retain snags except those that pose a safety hazard. Minimize damage to unmerchantable conifer saplings.
- **CUT** all other trees 2" DBH and larger within patches.


Harvest Unit 2 (mixed pine thinning, 12 acres):

- Unit boundaries are marked with red and blue paint, with a black spruce swamp on the north edge of the northern patches.
- **LEAVE UNCUT AND UNDAMAGED** all red- and blue- painted boundary trees and unmarked trees within thinning units. Retain snags except those that pose a safety hazard. Minimize damage to unmerchantable conifer saplings.
- **CUT** all orange marked trees.

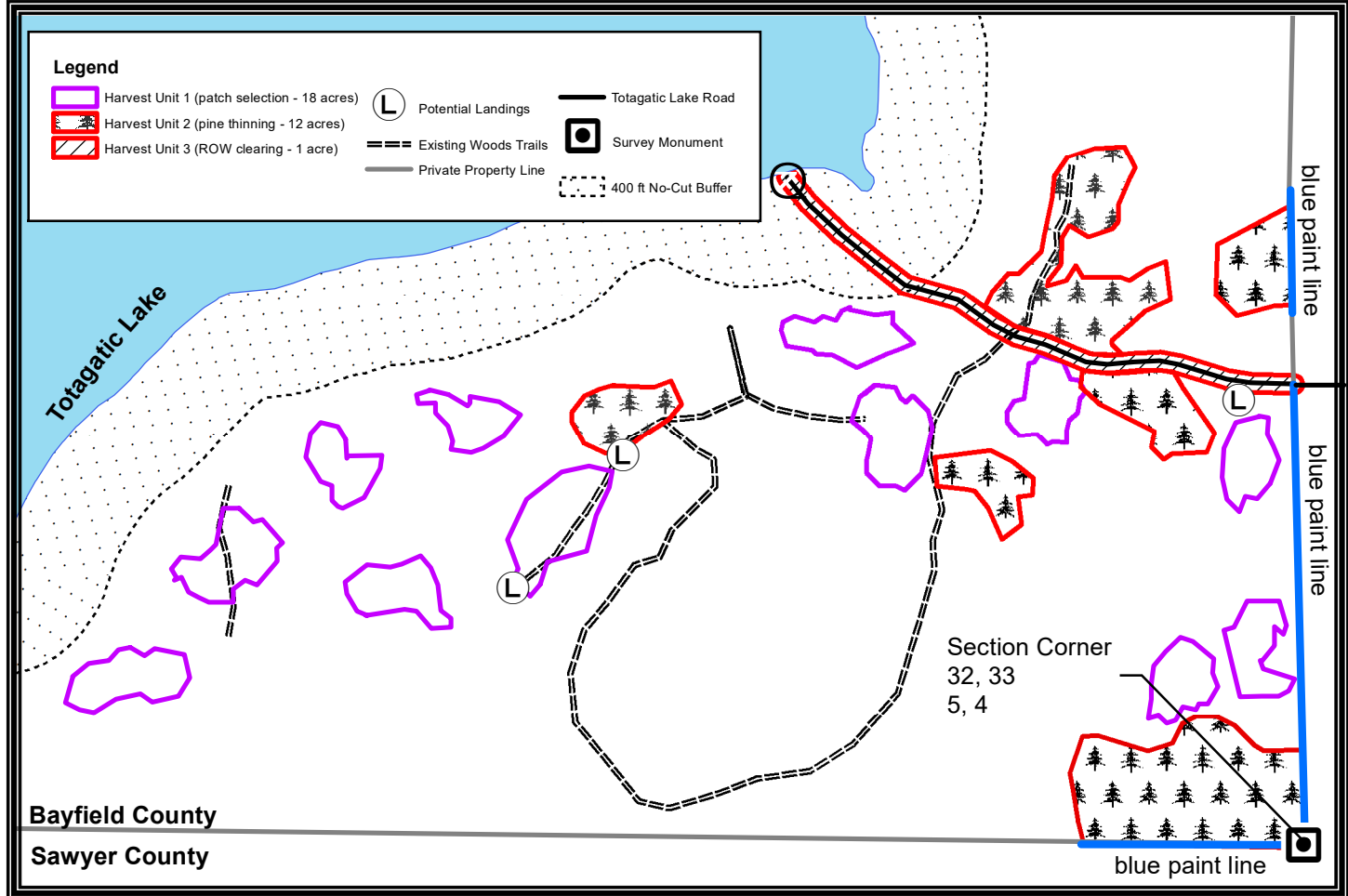
Harvest Unit 3 (Right-of-Way clearing, 1 acre):

- Unit boundaries are marked with red paint.
- **LEAVE UNCUT AND UNDAMAGED** all red-painted boundary trees.
- **CUT** all stems within red-painted boundary line, **INCLUDING SNAGS.**
 - **All slash must be pushed back and flattened past the red boundary trees but may not be placed in wetlands.**
 - There are two large white pine with red rings within the ROW unit. These white pines **must** be severed, and the top half of at least one of these pines must be left within adjacent cutting unit 2 to provide course woody debris. Both tops may be left if the contractor desires.

Totagatic Lake Wildlife Area

Forester: Kathleen Klow (715) 308-4416		Twp 43N	Range 8W	Sec: 32	Estimated Volumes:	
Total Stand Acres: 101 Total Harvest Acres: 31		Township: Cable			Species	4" Roundwood Tons
Soil: Loam, Rocky	Regen Code: Natural	Compartment: 1			Aspen	180
Topography: Gentle to Moderate Slopes		Tract Number: 1-21 Tic Tac Totagatic			*Red Oak	900
		Contract Number:			Red Pine	110
					Mixed Hrdwds	*625
					Total Minimum Bid:	\$14,702.00

* Red oak contains approx. 40 MBF.
 **MX contains approx. 53% basswood, 31% hard maple, 14% soft maple, 2% ash, <1% white birch.
MX weighted conversion factor: 2.18 tons/cord.
 ***MX contains approx. 3 MBF hard maple, 1 MBF soft maple.



This map is not a survey of the actual boundary of any property this map depicts.

- This harvest includes patch selection clearcuts, pine thinnings, and ROW clearing. This sale is being sold on a ticket scale basis. Utilize all felled trees to a 4" minimum top diameter. No biomass harvesting is allowed.
- **Harvest operations SHALL NOT BE ALLOWED FROM APRIL 15 – AUGUST 15.**
- With the exception noted above, harvesting will be allowed anytime soil rutting is not occurring.
- Do not damage any survey monumentation.
- Harvest boundaries are designated with purple, red, and blue paint as indicated on the map. Black spruce swamp edge borders the north side of the northern pine units.
- Do not leave tree tops, branches, or debris within wetlands or across the private property lines.
- Prior to moving equipment onto or off the sale, remove debris and soil from equipment.
- Signage will need to be posted on Totagatic Lake Road notifying users of harvest operations.
- This contract requires DNR authorization for all road/landing construction and places several other requirements on road construction, maintenance and closure. See timber sale administrator for access and road requirements.

Please see page two for specific cutting unit requirements.