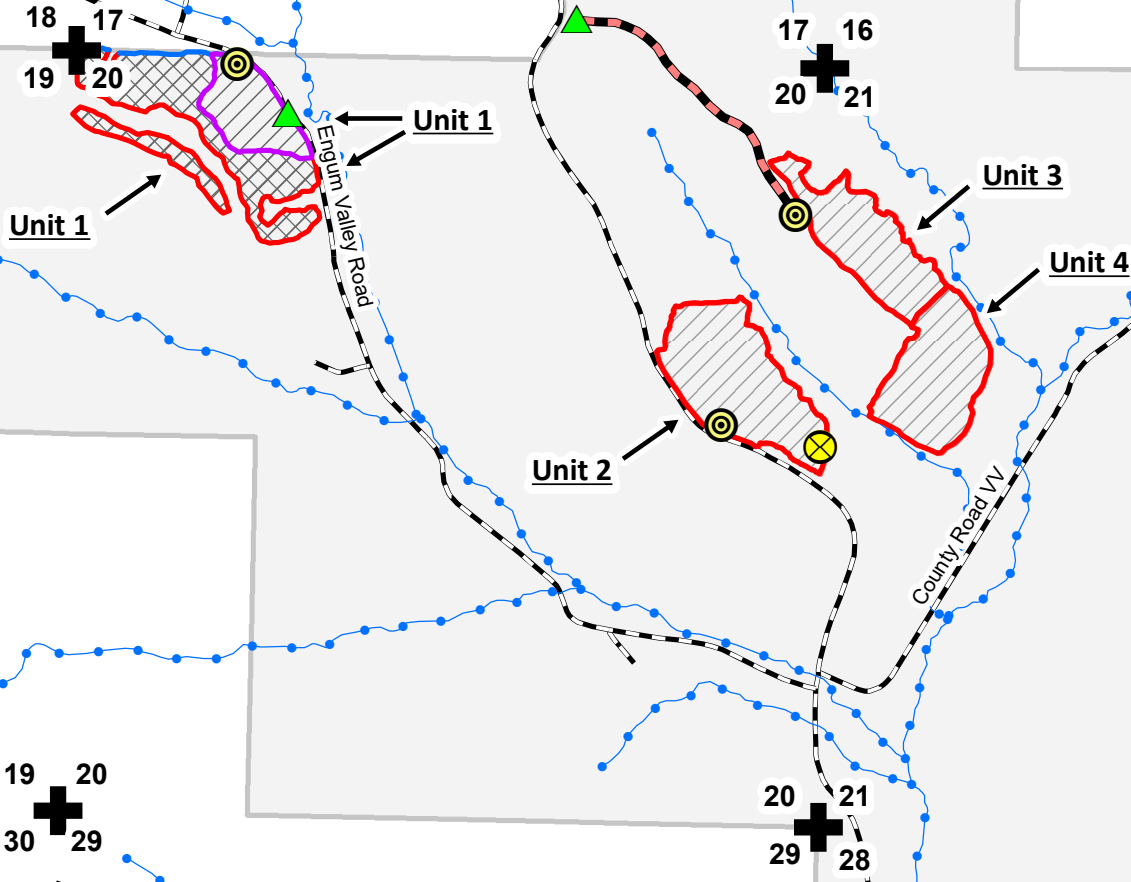
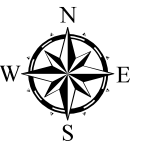


# Borst Valley WA- Bear Skull TS

Tract #6204-1-25  
 T23N R09W Sections 20 & 21  
 Town of Chimney Rock, Trempealeau County, WI  
 Sale Established By: R.T. Strand



**Legend**

- Gate
- Proposed Landing
- Survey Monument
- Section Corner
- Field Access Route
- Double-Sided Purple Paint Line
- Blue Paint Line
- Red Paint Line
- Streams
- Roads
- State Owned Land
- CTM 17 acres, Harvest all Trees Marked with Orange Paint.
- LTM 49 acres, Harvest all Trees 2" DBH and Larger (Not Leave Trees)

**Unit 1 (24 acres)**  
 -CTM 17 acres (Orange Paint=Cut)  
 -LTM 7 acres (Green Paint=Do Not Cut)

**Unit 2 (17 acres)**  
 -LTM 17 acres (Green Paint=Do Not Cut)

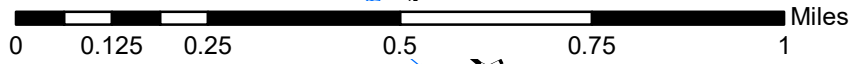
**Unit 3 (12 acres)**  
 -LTM 12 acres (Purple Paint=Do Not Cut)

**Unit 4 (13 acres)**  
 -LTM 13 acres (Green Paint=Do Not Cut)



Map Produced By R.T. Strand  
 Date 02/12/26

Scale 4"=1 Mile (1:15,840)



This map is for informational purposes only and may not have been prepared for or be suitable for legal, engineering or surveying purposes. The user is solely responsible for verifying the accuracy of information before using for any purpose.

By using this product for any purpose user agrees to be bound by all disclaimers found here: <https://dnr.wisconsin.gov/legal>.

# Borst Valley WA- Bear Skull TS (Detailed EAST)

Tract #6204-1-25

T23N R09W Sections 20 & 21

Town of Chimney Rock, Trempealeau County, WI  
Sale Established By: R.T. Strand

This map is for informational purposes only and may not have been prepared for or be suitable for legal, engineering or surveying purposes. The user is solely responsible for verifying the accuracy of information before using for any purpose.  
By using this product for any purpose user agrees to be bound by all disclaimers found here: <https://dnr.wisconsin.gov/legal>.

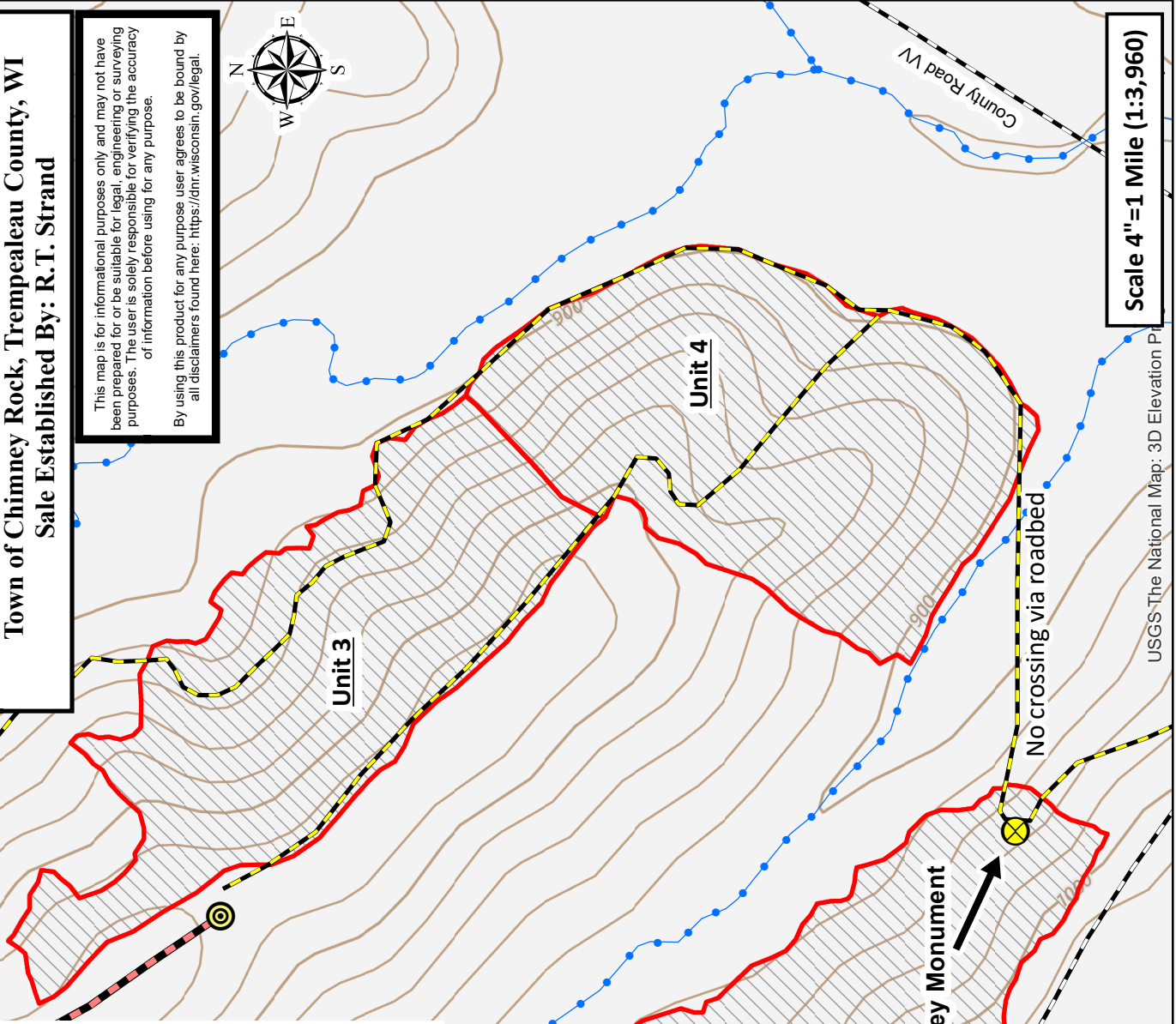


Scale 4"=1 Mile (1:3,960)

- Legend**
- Gate
  - Proposed Landing
  - Survey Monument
  - Section Corner
  - Existing Roadbed
  - Field Access Route
  - Double-Sided Purple Paint Line
  - Blue Paint Line
  - Red Paint Line
  - Streams
  - Roads
  - State Owned Land
  - CTM 17 acres, Harvest all Trees Marked with Orange Paint.
  - LTM 49 acres, Harvest all Trees 2" DBH and Larger (Not Leave Trees)
- Unit 1 (24 acres)**
  - CTM 17 acres (Orange Paint=Cut)
  - LTM 7 acres (Green Paint=Do Not Cut)
  - Unit 2 (17 acres)**
  - LTM 17 acres (Green Paint=Do Not Cut)
  - Unit 3 (12 acres)**
  - LTM 12 acres (Purple Paint=Do Not Cut)
  - Unit 4 (13 acres)**
  - LTM 13 acres (Green Paint=Do Not Cut)



Map Produced By R.T. Strand  
Date 02/12/26



USGS-The National Map: 3D Elevation P

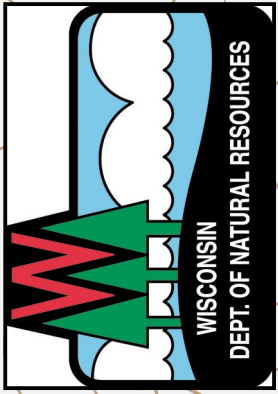
# Borst Valley WA- Bear Skull TS (Detailed WEST)

Tract #6204-1-25

T23N R09W Sections 20 & 21

Town of Chimney Rock, Trempealeau County, WI  
Sale Established By: R.T. Strand

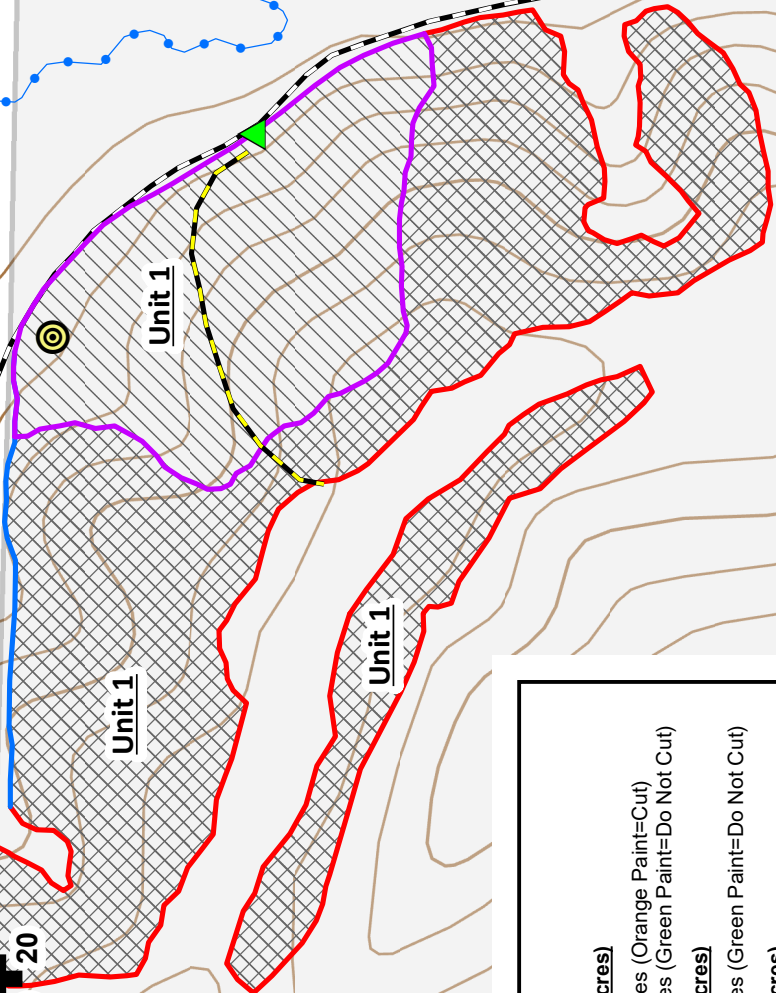
This map is for informational purposes only and may not have been prepared for or be suitable for legal, engineering or surveying purposes. The user is solely responsible for verifying the accuracy of information before using for any purpose.  
By using this product for any purpose user agrees to be bound by all disclaimers found here: <https://dnr.wisconsin.gov/legal>.



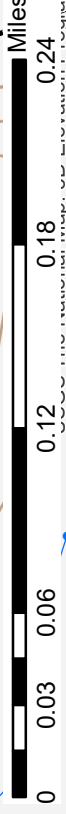
Map Produced By R.T. Strand  
Date 02/12/26

Engum Valley Road

18  
17  
19  
20



Scale 4"=1 Mile (1:3,960)



Legend	
	Gate
	Proposed Landing
	Survey Monument
	Section Corner
	Existing Roadbed
	Field Access Route
	Double-Sided Purple Paint Line
	Blue Paint Line
	Red Paint Line
	Streams
	Roads
	State Owned Land
	CTM 17 acres, Harvest all Trees Marked with Orange Paint.
	LTM 49 acres, Harvest all Trees 2" DBH and Larger (Not Leave Trees)
	<b>Unit 1 (24 acres)</b>
	-CTM 17 acres (Orange Paint=Cut)
	-LTM 7 acres (Green Paint=Do Not Cut)
	<b>Unit 2 (17 acres)</b>
	-LTM 17 acres (Green Paint=Do Not Cut)
	<b>Unit 3 (12 acres)</b>
	-LTM 12 acres (Purple Paint=Do Not Cut)
	<b>Unit 4 (13 acres)</b>
	-LTM 13 acres (Green Paint=Do Not Cut)