

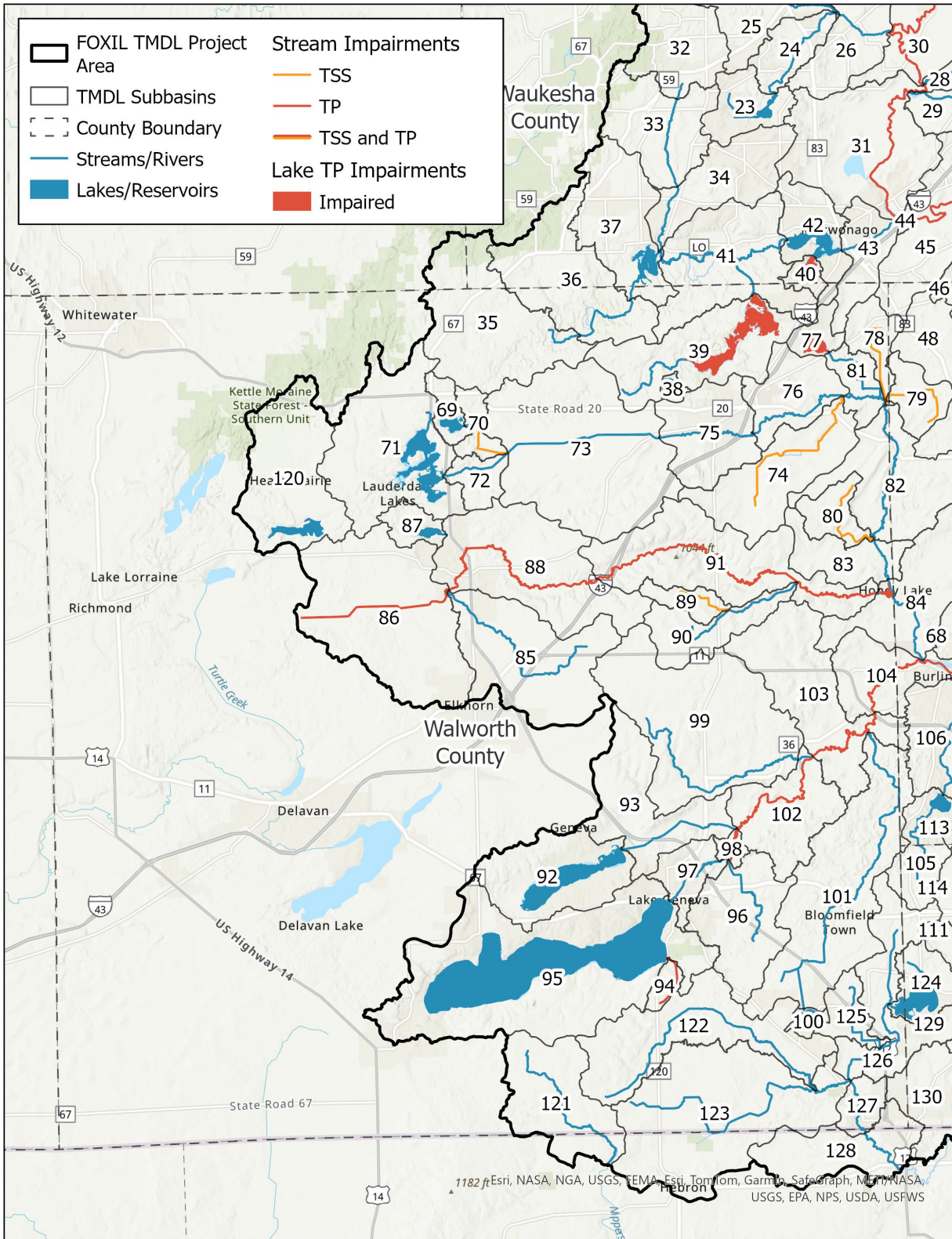
## APPENDIX B

# WATERBODY IMPAIRMENTS ADDRESSED BY THE TMDL

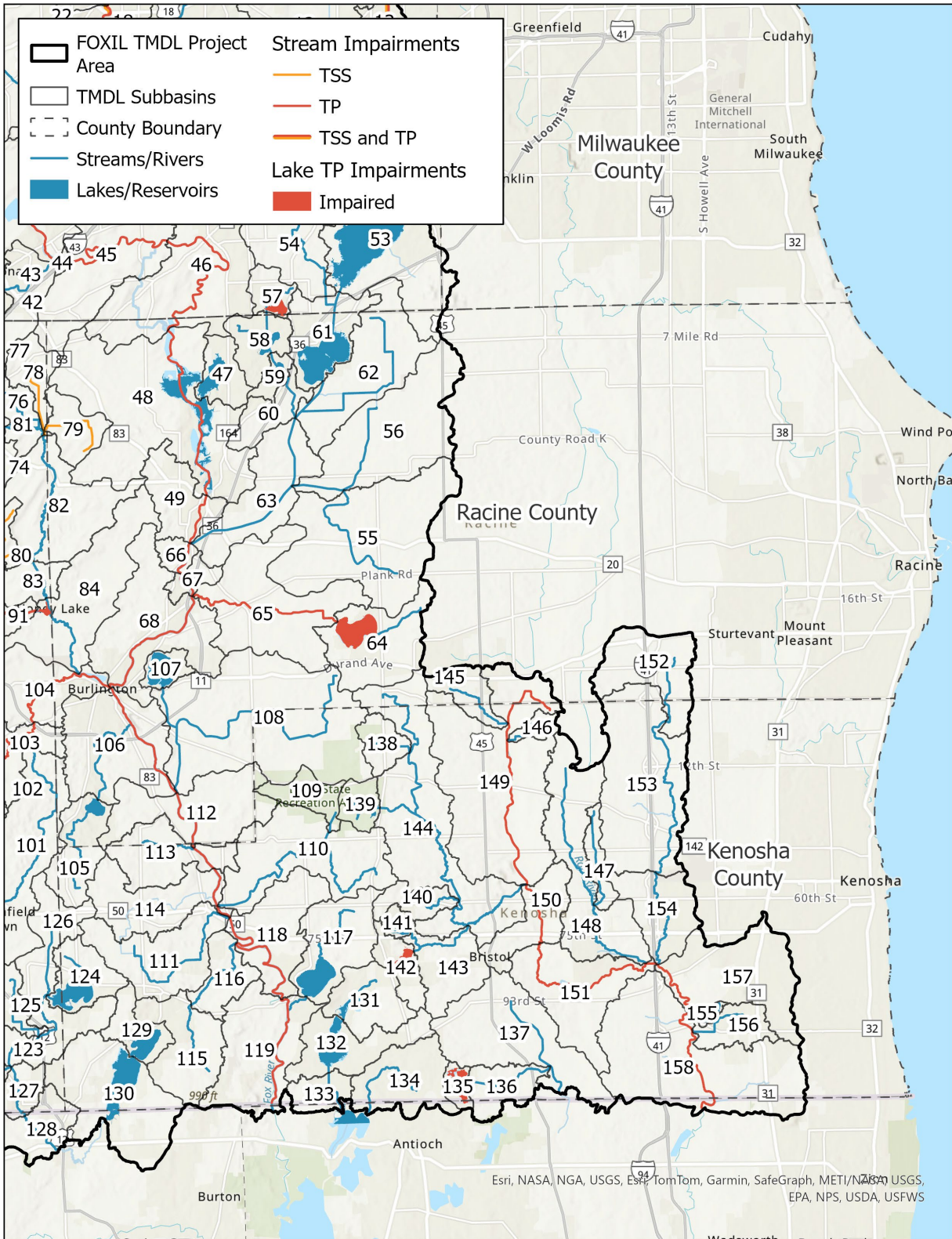
Supporting the Fox Illinois River Basin Total Maximum Daily Load (TMDL) for Phosphorus and  
Total Suspended Solids



**FIGURE B.2**  
**TMDL subbasins and impairments in Walworth County**



**FIGURE B.3**  
**TMDL subbasins and impairments Racine and Kenosha Counties**



**TABLE B.1  
TP Impairments for streams listed on the WDNR 2026 303(d) list**

Waterbody Name	WBIC	WDNR AU ID	Counties	Start Mile	End Mile	Source	Impairments (Observed Effects)	TP Criterion (µg/L)	TMDL Subbasin
Fox River	742500	424184	Waukesha	113.99	121.06	PS/NPS	Low DO	75	5
Fox River	742500	424143	Waukesha	110.29	113.99	PS/NPS	Low DO, Degraded Biological Community	75	16,17
Fox River	742500	10461	Waukesha	105.34	109.21	PS/NPS	Low DO	75	18
Fox River	742500	481165	Waukesha	91.98	105.34	NPS	Impairment Unknown	75	30,31
Fox River	742500	8103693	Waukesha	85.23	91.98	PS/NPS	Impairment Unknown	100	44,45
Fox River	742500	10507	Racine, Waukesha, Kenosha	47.17	85.23	PS/NPS	Degraded Biological Community, Excess Algal Growth	100	46, 48, 49, 66, 67, 68, 106, 112, 113, 114, 118, 119
Spring Creek	773400	10482	Waukesha	0	6.57	PS/NPS	Low DO	75	2
Zion Creek	772400	424601	Waukesha	0	1.65	NPS	Low DO	75	7
Unnamed	771800	3991895	Waukesha	0	4.45	NPS	Impairment Unknown	75	10
Unnamed	772900	424345	Waukesha	0	8.09	PS/NPS	Excess Algal Growth	75	12
Poplar Creek	772800	10511	Waukesha	0	3.64	NPS	Impairment Unknown	75	13,14
Unnamed	771650	424708	Waukesha	0	1.26	NPS	Elevated Water Temperature, Degraded Habitat	75	15
Eagle Creek	759500	10465	Racine	0	2.05	PS/NPS	Impairment Unknown	75	65
Sugar Creek	752100	10488	Walworth	0	26.33	NPS	Impairment Unknown	75	86, 88, 91
Unnamed	5041807	9117125	Walworth	0	1.62	NPS	High Phosphorus Levels	75	94
White River	751200	10453	Racine, Walworth	0	15.45	PS/NPS	Impairment Unknown	75	98, 102, 103, 104
Des Plaines River	734000	11799	Racine, Kenosha	0	23.44	PS/NPS	Impairment Unknown	75	149, 150, 151, 157, 158

TABLE B.2  
**TSS Impairments for streams listed on the WDNR 2026 303(d) list**

Waterbody Name	WBIC	WDNR AU ID	Counties	Start Mile	End Mile	Source	Impairments (Observed Effects)	Subbasins
Fox River	742500	424184	Waukesha	114	121.1	PS/NPS	Low DO	5
Fox River	742500	424143	Waukesha	110.3	114	PS/NPS	Low DO	16,17
Fox River	742500	10461	Waukesha	105.3	109.2	PS/NPS	Degraded Habitat	18
Lannon Creek	773700	424314	Waukesha	0	5.48	NPS	Degraded Habitat	1
Zion Creek	772400	424601	Waukesha	0	1.65	NPS	Elevated Water Temperature, Degraded Habitat	7
Unnamed	772900	424345	Waukesha	0	8.09	PS/NPS	Elevated Water Temperature	12
Unnamed	771650	424708	Waukesha	0	1.26	NPS	Low DO	15
Unnamed	3000119	425595	Waukesha	0	1.88	NPS	Elevated Water Temperature, Degraded Habitat	20
Unnamed	3000120	425544	Waukesha	0	0.72	NPS	Elevated Water Temperature, Degraded Habitat	21

**TABLE B.3**  
**TP Impairments for lakes listed on the WDNR 2026 303(d) list**

Waterbody Name	Counties	WBIC	WDNR AU ID	Year Listed	Impairments (Observed Effects)	Lake Type	TP Criterion (µg/L)	TMDL Subbasin
Barstow Impoundment (Fox River)	Waukesha	742500	424143, 296926	1998	Low DO, Excess Algal Growth	Impounded Flowing Water	75	17
Lake Beulah	Walworth	766600	10501	2020	Impairment Unknown	Two-Story	15	39
Phantom Lake	Waukesha	766000	10500	2016	Impairment Unknown	Deep Seepage	20	40
Lake Denoon	Waukesha, Racine	761300	18102	2026		Deep Seepage	20	57
Eagle Lake	Racine	759800	10466	2022	Eutrophication, Excess Algal Growth	Shallow Lowland	40	64
Potter Lake	Walworth	753800	10491	2010	High Phosphorus Levels	Deep Seepage	20	77
Honey Lake	Walworth	752300	10489	2026		Impounded Flowing Water	75	84
Benet Lake	Kenosha	734800	3895153	2018	Eutrophication, Excess Algal Growth	Deep Headwater	30	135
Lake Shangrila	Kenosha	734700	10417	2018	Eutrophication, Excess Algal Growth	Deep Headwater	30	135
Hooker Lake	Kenosha	738400	10425	2020	Impairment Unknown, Excess Algal Growth	Deep Headwater	30	142

**TABLE B.4**  
**TSS Impairments for lakes listed on the WDNR 2026 303(d) list**

Waterbody Name	Counties	WBIC	WDNR AU ID	Year Listed	Impairments (Observed Effects)	Lake Type	TMDL Subbasin
Barstow Impoundment (Fox River)	Waukesha	742500	424143, 296926	1998	Low DO, Degraded Biological Community	Impounded Flowing Water	17