

APPENDIX A

TMDL SUBBASINS AND CONNECTIONS

Supporting the Fox Illinois River Basin Total Maximum Daily Load (TMDL) for Phosphorus and Total Suspended Solids

FIGURE A.1
TMDL subbasins in Waukesha County

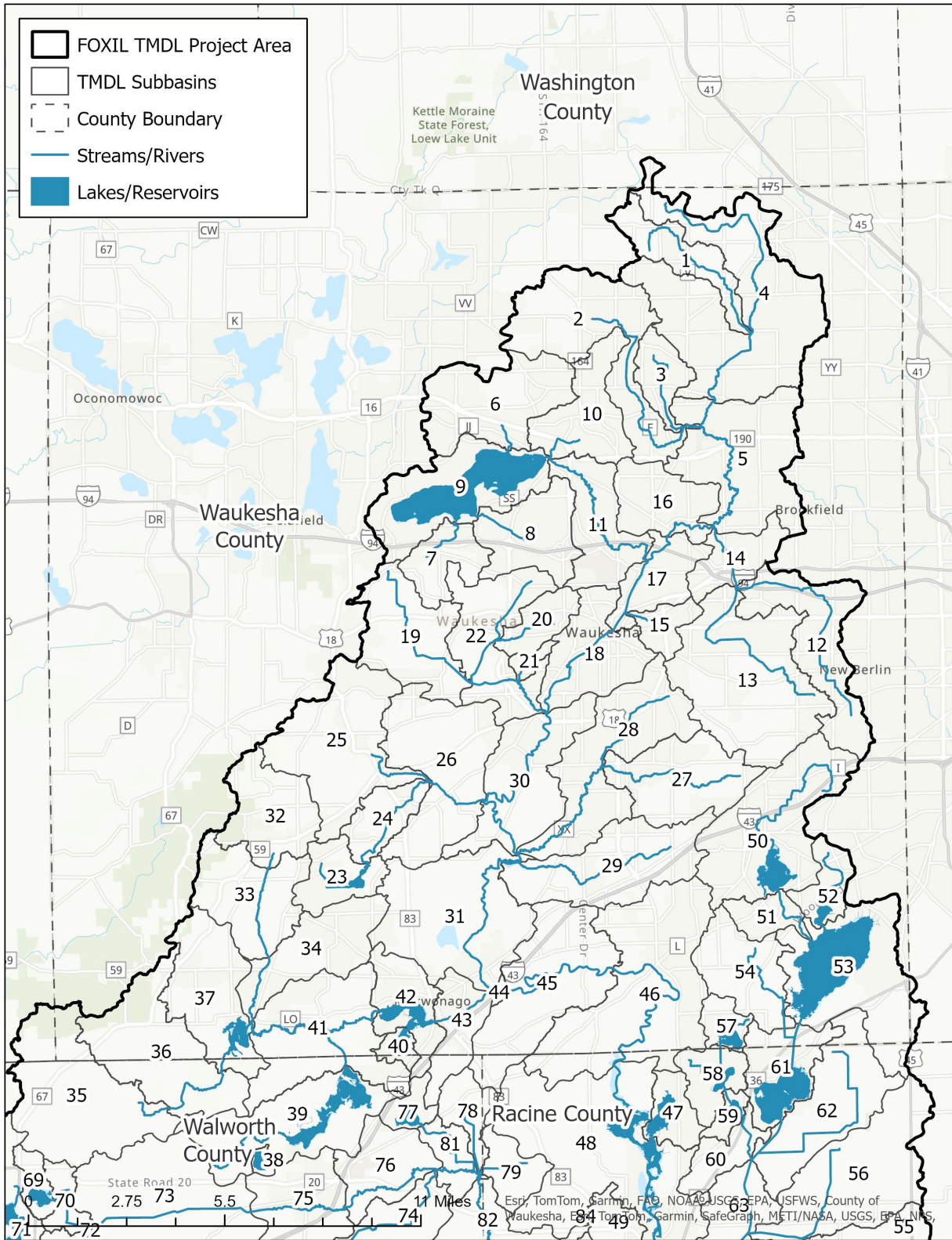


FIGURE A.2
TMDL subbasins in Walworth County

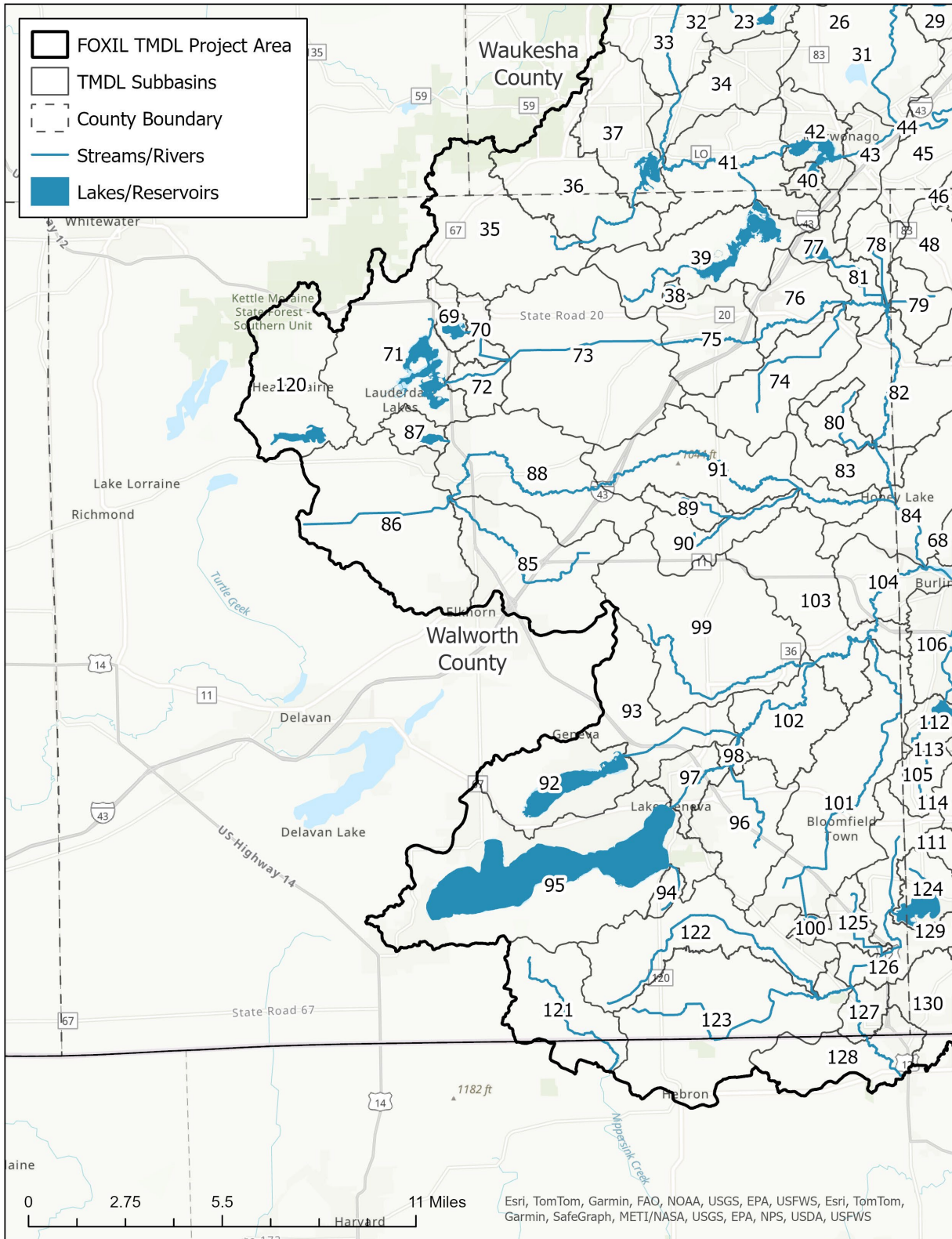


FIGURE A.3
TMDL subbasins in Racine County and Kenosha County

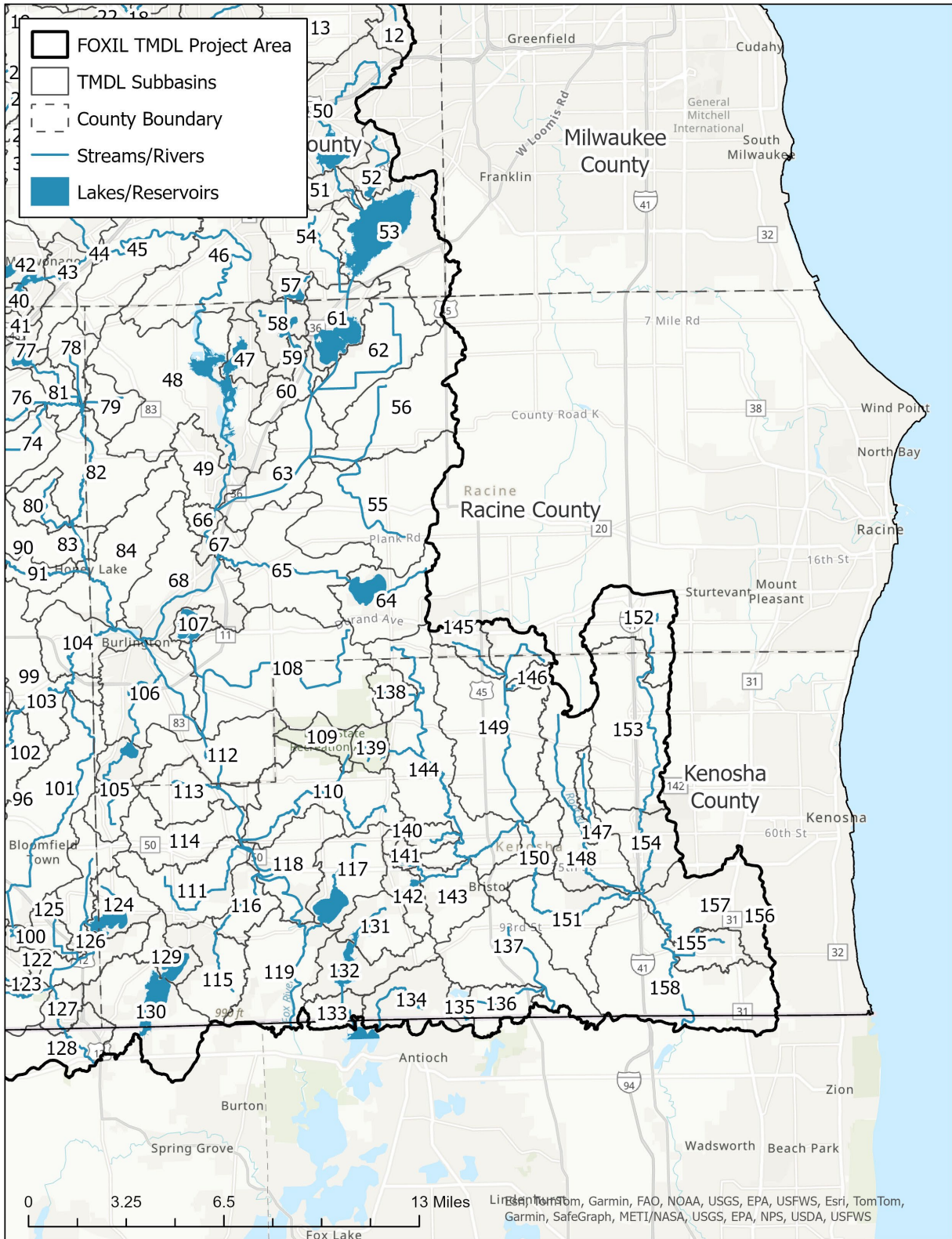


TABLE A.1
TMDL subbasins, total phosphorus (TP) criteria, and total suspended solids (TSS) targets

Note: N/A = not applicable; no TSS target is defined for lakes

TMDL Subbasin	Waterbody Name	Waterbody Type	WBIC	WDNR AU ID	County	TP Criterion (µg/L)	TSS Target (mg/L)
1	Lannon Creek	Stream/River	773700	424314	Waukesha	75	12
2	Spring Creek	Stream/River	773400	10482	Waukesha	75	12
3	Perennial Stream C (Sc011)	Stream/River	3000121	425628	Waukesha	75	12
4	Fox River--mile 75.8 to 85.6	Stream/River	742500	424225	Waukesha	75	12
5	Fox River--mile 69.5 to 75.8	Stream/River	742500	424184	Waukesha	75	12
6	Coco Creek	Stream/River	772100	897130	Waukesha	75	12
7	Zion Creek	Stream/River	772400	424601	Waukesha	75	12
8	Meadow Brook Creek	Stream/River	772300	3991922	Waukesha	75	12
9	Pewaukee Lake	Lake	772000	18113	Waukesha	30	N/A
10	Local Water	Stream/River	771800	3991895	Waukesha	75	12
11	Pewaukee River	Stream/River	771700	10510	Waukesha	75	12
12	Deer Creek	Stream/River	772900	424345	Waukesha	75	12
13	Poplar Creek--mile 2.1 to 8.3	Stream/River	772800	424456	Waukesha	75	12
14	Poplar Creek--mouth to mile 2.1	Stream/River	772800	10511	Waukesha	75	12
15	Frame Park Creek	Stream/River	771650	424708	Waukesha	75	12
16	Fox River--mile 67.6 to 69.5	Stream/River	742500	424143	Waukesha	75	12
17	Fox River--mile 64.2 to 67.6	Stream/River	771600	296926	Waukesha	75	12
18	Fox River--mile 60.6 to 64.2	Stream/River	742500	10461	Waukesha	75	12
19	Brandy Brook	Stream/River	771400	10509	Waukesha	75	12
20	Perennial Stream C (Pb018)	Stream/River	3000119	425595	Waukesha	75	12
21	Perennial Stream D (Pb016)	Stream/River	3000120	425544	Waukesha	75	12
22	Pebble Creek	Stream/River	771300	10508	Waukesha	75	12

TMDL Subbasin	Waterbody Name	Waterbody Type	WBIC	WDNR AU ID	County	TP Criterion (µg/L)	TSS Target (mg/L)
23	Spring Lake	Lake	770600	10481	Waukesha	20	N/A
24	Spring Brook	Stream/River	770300	896988	Waukesha	75	12
25	Genesee Creek--mile 1.8 to 4.4	Stream/River	769800	10479	Waukesha	75	12
26	Genesee Creek--mouth to mile 1.8	Stream/River	769800	897102	Waukesha	75	12
27	Mill Creek	Stream/River	769700	10478	Waukesha	75	12
28	Pebble Brook	Stream/River	769500	10477	Waukesha	75	12
29	Mill Brook	Stream/River	769400	18104	Waukesha	75	12
30	Fox River--mile 53 to 60.6	Stream/River	742500	481165	Waukesha	75	12
31	Fox River--mile 47 to 53	Stream/River	742500	481165	Waukesha	75	12
32	Jericho Creek--mile 5.2 to 5.7	Stream/River	768300	18111	Waukesha	75	12
33	Jericho Creek--mile 2.3 to 5.2	Stream/River	768300	18111	Waukesha	75	12
34	Jericho Creek--mouth to mile 2.3	Stream/River	768300	18111	Waukesha	75	12
35	Mukwonago River--mile 15.9 to 17.2	Stream/River	765500	5734722	Waukesha, Jefferson, Walworth	75	12
36	Mukwonago River--mile 13.1 to 15.9	Stream/River	765500	10498	Waukesha, Walworth	75	12
37	Eagle Spring Lake	Lake	768600	10505	Waukesha, Walworth	40	N/A
38	Booth Lake	Lake	740400	10496	Walworth	20	N/A
39	Beulah Lake	Lake	766600	10501	Walworth	15	N/A
40	Phantom Lake	Lake	766000	10500	Waukesha, Walworth	20	N/A
41	Mukwonago River--mile 4.1 to 11.0	Stream/River	765500	897059	Waukesha, Walworth	75	12
42	Lower Phantom Lake	Lake	765800	10499	Waukesha, Walworth	40	N/A
43	Mukwonago River--mouth to mile 2.35	Stream/River	765500	3884404	Waukesha, Walworth	75	12

TMDL Subbasin	Waterbody Name	Waterbody Type	WBIC	WDNR AU ID	County	TP Criterion (µg/L)	TSS Target (mg/L)
44	Fox River--mile 46.6 to 47	Stream/River	742500	8103693	Waukesha	100	12
45	Fox River--mile 41.6 to 46.6	Stream/River	742500	8103693	Waukesha, Walworth, Racine	100	12
46	Fox River--mile 34.8 to 41.6	Stream/River	742500	10507	Waukesha, Walworth	100	12
47	Tichigan Lake	Lake	763600	10476	Racine	30	N/A
48	Fox River--mile 28.7 to 34.8	Stream/River	5591525	3990961	Racine	75	12
49	Fox River--mile 27 to 28.7	Stream/River	742500	10507	Racine	100	12
50	Little Muskego Lake	Lake	762700	18103	Waukesha	30	N/A
51	Muskego Creek	Stream/River	762500	10472	Waukesha	75	12
52	Bass Bay	Lake	763200	10474	Waukesha	30	N/A
53	Big Muskego Lake	Lake	762400	10471	Waukesha, Milwaukee, Racine	40	N/A
54	Unnamed Stream	Stream/River	762200	5509508	Waukesha	75	12
55	Unnamed Stream	Stream/River	760400	5509155	Racine	75	12
56	Unnamed Stream	Stream/River	760300	5509189	Racine	75	12
57	Lake Denoon	Lake	761300	18102	Waukesha	20	N/A
58	Long Lake	Lake	761100	902076	Racine	30	N/A
59	Waubeesee Lake	Lake	760900	10468	Racine	30	N/A
60	Unnamed Stream	Stream/River	760700	6920396	Racine	75	12
61	Wind Lake	Lake	761700	10469	Waukesha, Racine	30	N/A
62	Wind Lake Drainage Canal	Stream/River	760200	10467	Waukesha, Racine	75	12
63	Wind Lake Drainage Canal	Stream/River	760200	10467	Racine	75	12
64	Eagle Lake	Lake	759800	10466	Racine	40	N/A
65	Eagle Creek (Eagle Lake Outlet)	Stream/River	759500	10465	Racine	75	12

TMDL Subbasin	Waterbody Name	Waterbody Type	WBIC	WDNR AU ID	County	TP Criterion (µg/L)	TSS Target (mg/L)
66	Fox River--mile 25.9 to 27	Stream/River	742500	10507	Racine	100	12
67	Fox River--mile 25 to 25.9	Stream/River	742500	10507	Racine	100	12
68	Fox River--mile 20.4 to 25	Stream/River	742500	10507	Racine	100	12
69	Pleasant Lake	Lake	741500	10484	Walworth	30	N/A
70	Perennial Stream B (Tm2)	Stream/River	755100	425131	Walworth	75	12
71	Lauderdale Lakes	Lake	755500	10493	Walworth	30	N/A
72	Honey Creek--mile 26.7 to 28.9	Stream/River	751500	6777749	Walworth	75	12
73	Honey Creek--mile 22.2 to 26.7	Stream/River	751500	10486	Walworth	75	12
74	Spring Creek to Honey Creek	Stream/River	753900	10492	Walworth	75	12
75	Honey Creek--mile 18.7 to 22.2	Stream/River	751500	6776684	Walworth	75	12
76	Honey Creek--mile 14.8 to 18.7	Stream/River	751500	6776684	Walworth	75	12
77	Potter Lake	Lake	753800	10491	Walworth	20	N/A
78	Perennial Stream D (B4)	Stream/River	753500	425054	Walworth, Racine	75	12
79	Perennial Stream E (B5)	Stream/River	753600	425097	Racine	75	12
80	Perennial Stream A (Spp1)	Stream/River	753100	425015	Walworth	75	12
81	Honey Creek--mile 13 to 14.8	Stream/River	751500	6776652	Walworth	75	12
82	Honey Creek--mile 7.4 to 13	Stream/River	751500	6876833	Walworth, Racine	75	12
83	Honey Creek--mile 6 to 7.4	Stream/River	751500	6777100	Walworth, Racine	75	12
84	Honey Creek--mouth to mile 6.0	Stream/River	751500	6876799	Walworth, Racine	75	12
85	Baker Creek	Stream/River	753000	5734757	Walworth	75	12
86	Sugar Creek	Stream/River	752100	10488	Walworth	75	12
87	Wandawega Lake	Lake	740700	10483	Walworth	40	N/A
88	Sugar Creek--mile 14.0 to 20.0	Stream/River	752100	10488	Walworth	75	12

TMDL Subbasin	Waterbody Name	Waterbody Type	WBIC	WDNR AU ID	County	TP Criterion (µg/L)	TSS Target (mg/L)
89	Spring Brook, North Branch	Stream/River	752500	425450	Walworth	75	12
90	Spring Brook	Stream/River	752400	897158	Walworth	75	12
91	Sugar Creek--mouth to mile 14.0	Stream/River	752100	10488	Walworth	75	12
92	Como Lake	Lake	757900	10458	Walworth	40	N/A
93	Como Creek	Stream/River	757600	10457	Walworth	75	12
94	Button Creek	Stream/River	5041807	9117125	Walworth	75	12
95	Lake Geneva	Lake	758300	10459	Walworth	15	N/A
96	Bloomfield Creek	Stream/River	758000	None	Walworth	75	12
97	White River--mile 15.5 to Geneva Lake	Stream/River	751200	10452	Walworth	75	12
98	White River--mile 13.8 to 15.5	Stream/River	751200	10453	Walworth	75	12
99	Ore Creek	Stream/River	757000	10455	Walworth	75	12
100	Pell Lake	Lake	743600	10446	Walworth	40	N/A
101	Lake Ivanhoe Outlet (Spring Valley Creek)	Stream/River	756200	18098	Walworth, Racine, Kenosha	75	12
102	White River--mile 8.7 to 13.8	Stream/River	751200	10453	Walworth	75	12
103	White River--mile 4.6 to 8.7	Stream/River	751200	10453	Walworth, Racine	75	12
104	White River--mouth to mile 4.6	Stream/River	751200	10453	Walworth, Racine	75	12
105	Bohner Lakes	Lake	750800	10440	Walworth, Racine, Kenosha	30	N/A
106	Fox River--mile 16.4 to 20.4	Stream/River	742500	10507	Racine	100	12
107	Browns Lake	Lake	750300	18094	Racine	30	N/A
108	Hoosier Creek Canal	Stream/River	749800	10439	Racine, Kenosha	75	12
109	Peterson Creek	Stream/River	748500	895471	Kenosha	75	12

TMDL Subbasin	Waterbody Name	Waterbody Type	WBIC	WDNR AU ID	County	TP Criterion (µg/L)	TSS Target (mg/L)
110	Peterson Creek	Stream/River	748500	18093	Racine, Kenosha	75	12
111	Palmer Creek	Stream/River	748300	10436	Kenosha	75	12
112	Fox River--mile 14.2 to 16.4	Stream/River	742500	10507	Racine, Kenosha	100	12
113	Fox River--mile 11.4 to 14.2	Stream/River	742500	10507	Racine, Kenosha	100	12
114	Fox River--mile 9.6 to 11.4	Stream/River	742500	10507	Kenosha	100	12
115	Bassett Creek--mile 3.6 to 6.2	Stream/River	748200	10435	Kenosha	75	12
116	Bassett Creek--mouth to mile 3.6	Stream/River	748200	10435	Kenosha	75	12
117	Silver Lake	Lake	747900	10434	Kenosha	30	N/A
118	Fox River--mile 4.2 to 9.6	Stream/River	742500	10507	Kenosha	100	12
119	Fox River--mouth to mile 4.2	Stream/River	742500	10507	Kenosha	100	12
120	North Lake	Lake	741200	18106	Walworth	40	N/A
121	Nippersink Creek, Headwaters	Stream/River	742600	None	Walworth, McHenry (IL)	75	12
122	Nippersink Creek, West Branch	Stream/River	744400	10449	Walworth	75	12
123	North Branch Nippersink Creek--mile 4.0 to 13.4	Stream/River	742700	18095	Walworth, McHenry (IL)	75	12
124	Powers Lake	Lake	744200	10448	Walworth, Kenosha	30	N/A
125	Local Water	Stream/River	743500	5726787	Walworth	75	12
126	Nippersink Creek, East Branch	Stream/River	743400	10445	Walworth, Kenosha	75	12
127	North Branch Nippersink Creek--mile 2.1 to 4.0	Stream/River	742700	18095	Walworth, McHenry (IL)	75	12

TMDL Subbasin	Waterbody Name	Waterbody Type	WBIC	WDNR AU ID	County	TP Criterion (µg/L)	TSS Target (mg/L)
128	North Branch Nippersink Creek--mouth to mile 2.1	Stream/River	742700	18095	Walworth, Kenosha, McHenry (IL)	75	12
129	Marie Lake	Lake	743000	895559	Kenosha	30	N/A
130	Elizabeth Lake	Lake	742800	10444	Kenosha, McHenry (IL)	30	N/A
131	Center Lake	Lake	747300	10433	Kenosha	30	N/A
132	Camp Lake	Lake	747100	10432	Kenosha	40	N/A
133	Unnamed Stream	Stream/River	746600	6920325	Kenosha, Lake (IL)	75	12
134	Trevor Creek	Stream/River	745600	None	Kenosha, Lake (IL)	75	12
135	Benet Lake	Lake	734800	3895153	Kenosha, Lake (IL)	30	N/A
136	Local Water	Stream/River	734300	3894622	Kenosha, Lake (IL)	75	12
137	Dutch Gap Canal (N Mill Creek)	Stream/River	734100	11800	Kenosha, Lake (IL)	75	12
138	Local Water	Stream/River	739600	1519861	Kenosha	75	12
139	Vern Wolf Lake	Lake	739100	902005	Kenosha	40	N/A
140	Local Water	Stream/River	738500	3896514	Kenosha	75	12
141	Paddock Lake	Lake	737900	18090	Kenosha	30	N/A
142	Hooker Lake	Lake	738400	10425	Kenosha	30	N/A
143	Salem Branch (Hooker Lake Outlet)	Stream/River	737500	10423	Kenosha	75	12
144	Brighton Creek	Stream/River	737400	10422	Racine, Kenosha	75	12
145	Tributary to the Des Plaines River	Stream/River	740140	1519840	Racine, Kenosha	75	12
146	Local Water	Stream/River	5040564	3897588	Kenosha	75	12

TMDL Subbasin	Waterbody Name	Waterbody Type	WBIC	WDNR AU ID	County	TP Criterion (µg/L)	TSS Target (mg/L)
147	Local Water	Stream/River	737250	1519370	Kenosha	75	12
148	Center Creek	Stream/River	737200	3898194	Kenosha	75	12
149	Des Plaines River--mile 15.2 to 23.2	Stream/River	734000	11799	Racine, Kenosha	75	12
150	Des Plaines River--mile 12.9 to 15.2	Stream/River	734000	11799	Kenosha	75	12
151	Des Plaines River--mile 6.8 to 12.9	Stream/River	734000	11799	Kenosha	75	12
152	Kilbourn Road Ditch--mile 9.7 to 12.0	Stream/River	736900	10421	Racine, Kenosha	75	12
153	Kilbourn Road Ditch--mile 3.7 to 9.7	Stream/River	736900	10421	Racine, Kenosha	75	12
154	Kilbourn Road Ditch--mouth to mile 3.7	Stream/River	736900	10421	Kenosha	75	12
155	Lake Andrea	Lake	733850	26807	Kenosha	40	N/A
156	Lower Pleasant Prairie Dit.	Stream/River	736300	3899795	Kenosha	75	12
157	Des Plaines River--mile 4.4 to 6.8	Stream/River	734000	11799	Kenosha	75	12
158	Des Plaines River--mouth to mile 4.4	Stream/River	734000	11799	Kenosha	75	12

TABLE A.2
TMDL subbasin hydrologic connections

Note: Connections indicate the downstream TMDL reach to which each subbasin contributes

TMDL Reach	Waterbody Name	WBIC	Downstream TMDL Reach	Downstream Waterbody Name	Downstream WBIC
1	Lannon Creek	773700	4	Fox River--mile 75.8 to 85.6	742500
2	Spring Creek	773400	5	Fox River--mile 69.5 to 75.8	742500
3	Perennial Stream C (Sc011)	3000121	5	Fox River--mile 69.5 to 75.8	742500
4	Fox River--mile 75.8 to 85.6	742500	5	Fox River--mile 69.5 to 75.8	742500
5	Fox River--mile 69.5 to 75.8	742500	16	Fox River--mile 67.6 to 69.5	742500
6	Coco Creek	772100	9	Pewaukee Lake	772000
7	Zion Creek	772400	9	Pewaukee Lake	772000
8	Meadow Brook Creek	772300	9	Pewaukee Lake	772000
9	Pewaukee Lake	772000	11	Pewaukee River	771700
10	Local Water	771800	11	Pewaukee River	771700
11	Pewaukee River	771700	17	Fox River--mile 64.2 to 67.6	771600
12	Deer Creek	772900	14	Poplar Creek--mouth to mile 2.1	772800
13	Poplar Creek--mile 2.1 to 8.3	772800	14	Poplar Creek--mouth to mile 2.1	772800
14	Poplar Creek--mouth to mile 2.1	772800	16	Fox River--mile 67.6 to 69.5	742500
15	Frame Park Creek	771650	18	Fox River--mile 60.6 to 64.2	742500
16	Fox River--mile 67.6 to 69.5	742500	17	Fox River--mile 64.2 to 67.6	771600
17	Fox River--mile 64.2 to 67.6	771600	18	Fox River--mile 60.6 to 64.2	742500
18	Fox River--mile 60.6 to 64.2	742500	30	Fox River--mile 53 to 60.6	742500
19	Brandy Brook	771400	22	Pebble Creek	771300
20	Perennial Stream C (Pb018)	3000119	22	Pebble Creek	771300
21	Perennial Stream D (Pb016)	3000120	22	Pebble Creek	771300
22	Pebble Creek	771300	30	Fox River--mile 53 to 60.6	742500

TMDL Reach	Waterbody Name	WBIC	Downstream TMDL Reach	Downstream Waterbody Name	Downstream WBIC
23	Spring Lake	770600	24	Spring Brook	770300
24	Spring Brook	770300	26	Genesee Creek--mouth to mile 1.8	769800
25	Genesee Creek--mile 1.8 to 4.4	769800	26	Genesee Creek--mouth to mile 1.8	769800
26	Genesee Creek--mouth to mile 1.8	769800	30	Fox River--mile 53 to 60.6	742500
27	Mill Creek	769700	28	Pebble Brook	769500
28	Pebble Brook	769500	31	Fox River--mile 47 to 53	742500
29	Mill Brook	769400	31	Fox River--mile 47 to 53	742500
30	Fox River--mile 53 to 60.6	742500	31	Fox River--mile 47 to 53	742500
31	Fox River--mile 47 to 53	742500	44	Fox River--mile 46.6 to 47	742500
32	Jericho Creek--mile 5.2 to 5.7	768300	33	Jericho Creek--mile 2.3 to 5.2	768300
33	Jericho Creek--mile 2.3 to 5.2	768300	34	Jericho Creek--mouth to mile 2.3	768300
34	Jericho Creek--mouth to mile 2.3	768300	41	Mukwonago River--mile 4.1 to 11.0	765500
35	Mukwonago River--mile 15.9 to 17.2	765500	36	Mukwonago River--mile 13.1 to 15.9	765500
36	Mukwonago River--mile 13.1 to 15.9	765500	37	Eagle Spring Lake	768600
37	Eagle Spring Lake	768600	41	Mukwonago River--mile 4.1 to 11.0	765500
38	Booth Lake	740400		No outlet	
39	Beulah Lake	766600	41	Mukwonago River--mile 4.1 to 11.0	765500
40	Phantom Lake	766000	42	Lower Phantom Lake	765800
41	Mukwonago River--mile 4.1 to 11.0	765500	42	Lower Phantom Lake	765800
42	Lower Phantom Lake	765800	43	Mukwonago River--mouth to mile 2.35	765500
43	Mukwonago River--mouth to mile 2.35	765500	44	Fox River--mile 46.6 to 47	742500
44	Fox River--mile 46.6 to 47	742500	45	Fox River--mile 41.6 to 46.6	742500
45	Fox River--mile 41.6 to 46.6	742500	46	Fox River--mile 34.8 to 41.6	742500
46	Fox River--mile 34.8 to 41.6	742500	48	Fox River--mile 28.7 to 34.8	5591525
47	Tichigan Lake	763600	48	Fox River--mile 28.7 to 34.8	5591525

TMDL Reach	Waterbody Name	WBIC	Downstream TMDL Reach	Downstream Waterbody Name	Downstream WBIC
48	Fox River--mile 28.7 to 34.8	5591525	49	Fox River--mile 27 to 28.7	742500
49	Fox River--mile 27 to 28.7	742500	66	Fox River--mile 25.9 to 27	742500
50	Little Muskego Lake	762700	51	Muskego Creek	762500
51	Muskego Creek	762500	53	Big Muskego Lake	762400
52	Bass Bay	763200	53	Big Muskego Lake	762400
53	Big Muskego Lake	762400	61	Wind Lake	761700
54	Unnamed Stream	762200	61	Wind Lake	761700
55	Unnamed Stream	760400	56	Unnamed Stream	760300
56	Unnamed Stream	760300	63	Wind Lake Drainage Canal	760200
57	Lake Denoon	761300	58	Long Lake	761100
58	Long Lake	761100	59	Waubeesee Lake	760900
59	Waubeesee Lake	760900	60	Unnamed Stream	760700
60	Unnamed Stream	760700	63	Wind Lake Drainage Canal	760200
61	Wind Lake	761700	63	Wind Lake Drainage Canal	760200
62	Wind Lake Drainage Canal	760200	63	Wind Lake Drainage Canal	760200
63	Wind Lake Drainage Canal	760200	66	Fox River--mile 25.9 to 27	742500
64	Eagle Lake	759800	65	Eagle Creek (Eagle Lake Outlet)	759500
65	Eagle Creek (Eagle Lake Outlet)	759500	68	Fox River--mile 20.4 to 25	742500
66	Fox River--mile 25.9 to 27	742500	67	Fox River--mile 25 to 25.9	742500
67	Fox River--mile 25 to 25.9	742500	68	Fox River--mile 20.4 to 25	742500
68	Fox River--mile 20.4 to 25	742500	106	Fox River--mile 16.4 to 20.4	742500
69	Pleasant Lake	741500		No outlet	
70	Perennial Stream B (Tm2)	755100	73	Honey Creek--mile 22.2 to 26.7	751500
71	Lauderdale Lakes	755500	72	Honey Creek--mile 26.7 to 28.9	751500
72	Honey Creek--mile 26.7 to 28.9	751500	73	Honey Creek--mile 22.2 to 26.7	751500

TMDL Reach	Waterbody Name	WBIC	Downstream TMDL Reach	Downstream Waterbody Name	Downstream WBIC
73	Honey Creek--mile 22.2 to 26.7	751500	75	Honey Creek--mile 18.7 to 22.2	751500
74	Spring Creek to Honey Creek	753900	81	Honey Creek--mile 13 to 14.8	751500
75	Honey Creek--mile 18.7 to 22.2	751500	76	Honey Creek--mile 14.8 to 18.7	751500
76	Honey Creek--mile 14.8 to 18.7	751500	81	Honey Creek--mile 13 to 14.8	751500
77	Potter Lake	753800	81	Honey Creek--mile 13 to 14.8	751500
78	Perennial Stream D (B4)	753500	82	Honey Creek--mile 7.4 to 13	751500
79	Perennial Stream E (B5)	753600	82	Honey Creek--mile 7.4 to 13	751500
80	Perennial Stream A (Spp1)	753100	83	Honey Creek--mile 6 to 7.4	751500
81	Honey Creek--mile 13 to 14.8	751500	82	Honey Creek--mile 7.4 to 13	751500
82	Honey Creek--mile 7.4 to 13	751500	83	Honey Creek--mile 6 to 7.4	751500
83	Honey Creek--mile 6 to 7.4	751500	84	Honey Creek--mouth to mile 6.0	751500
84	Honey Creek--mouth to mile 6.0	751500	104	White River--mouth to mile 4.6	751200
85	Baker Creek	753000	88	Sugar Creek--mile 14.0 to 20.0	752100
86	Sugar Creek	752100	88	Sugar Creek--mile 14.0 to 20.0	752100
87	Wandawega Lake	740700		No outlet	
88	Sugar Creek--mile 14.0 to 20.0	752100	91	Sugar Creek--mouth to mile 14.0	752100
89	Spring Brook, North Branch	752500	90	Spring Brook	752400
90	Spring Brook	752400	91	Sugar Creek--mouth to mile 14.0	752100
91	Sugar Creek--mouth to mile 14.0	752100	84	Honey Creek--mouth to mile 6.0	751500
92	Como Lake	757900	93	Como Creek	757600
93	Como Creek	757600	102	White River--mile 8.7 to 13.8	751200
94	Button Creek	5041807	95	Lake Geneva	758300
95	Lake Geneva	758300	97	White River--mile 15.5 to Geneva Lake	751200
96	Bloomfield Creek	758000	98	White River--mile 13.8 to 15.5	751200
97	White River--mile 15.5 to Geneva Lake	751200	98	White River--mile 13.8 to 15.5	751200

TMDL Reach	Waterbody Name	WBIC	Downstream TMDL Reach	Downstream Waterbody Name	Downstream WBIC
98	White River--mile 13.8 to 15.5	751200	102	White River--mile 8.7 to 13.8	751200
99	Ore Creek	757000	103	White River--mile 4.6 to 8.7	751200
100	Pell Lake	743600	101	Lake Ivanhoe Outlet (Spring Valley Creek)	756200
101	Lake Ivanhoe Outlet (Spring Valley Creek)	756200	104	White River--mouth to mile 4.6	751200
102	White River--mile 8.7 to 13.8	751200	103	White River--mile 4.6 to 8.7	751200
103	White River--mile 4.6 to 8.7	751200	104	White River--mouth to mile 4.6	751200
104	White River--mouth to mile 4.6	751200	106	Fox River--mile 16.4 to 20.4	742500
105	Bohner Lakes	750800	106	Fox River--mile 16.4 to 20.4	742500
106	Fox River--mile 16.4 to 20.4	742500	112	Fox River--mile 14.2 to 16.4	742500
107	Browns Lake	750300	108	Hoosier Creek Canal	749800
108	Hoosier Creek Canal	749800	112	Fox River--mile 14.2 to 16.4	742500
109	Peterson Creek	748500	110	Peterson Creek	748500
110	Peterson Creek	748500	118	Fox River--mile 4.2 to 9.6	742500
111	Palmer Creek	748300	118	Fox River--mile 4.2 to 9.6	742500
112	Fox River--mile 14.2 to 16.4	742500	113	Fox River--mile 11.4 to 14.2	742500
113	Fox River--mile 11.4 to 14.2	742500	114	Fox River--mile 9.6 to 11.4	742500
114	Fox River--mile 9.6 to 11.4	742500	118	Fox River--mile 4.2 to 9.6	742500
115	Bassett Creek--mile 3.6 to 6.2	748200	116	Bassett Creek--mouth to mile 3.6	748200
116	Bassett Creek--mouth to mile 3.6	748200	118	Fox River--mile 4.2 to 9.6	742500
117	Silver Lake	747900	119	Fox River--mouth to mile 4.2	742500
118	Fox River--mile 4.2 to 9.6	742500	119	Fox River--mouth to mile 4.2	742500
119	Fox River--mouth to mile 4.2	742500		Outlet to Fox River in Illinois	
120	North Lake	741200		No outlet	
121	Nippersink Creek, Headwaters	742600		Outlet to Nippersink Creek in Illinois	

TMDL Reach	Waterbody Name	WBIC	Downstream TMDL Reach	Downstream Waterbody Name	Downstream WBIC
122	Nippersink Creek, West Branch	744400	127	North Branch Nippersink Creek--mile 2.1 to 4.0	742700
123	North Branch Nippersink Creek--mile 4.0 to 13.4	742700	127	North Branch Nippersink Creek--mile 2.1 to 4.0	742700
124	Powers Lake	744200	126	Nippersink Creek, East Branch	743400
125	Local Water	743500	126	Nippersink Creek, East Branch	743400
126	Nippersink Creek, East Branch	743400	127	North Branch Nippersink Creek--mile 2.1 to 4.0	742700
127	North Branch Nippersink Creek--mile 2.1 to 4.0	742700	128	North Branch Nippersink Creek--mouth to mile 2.1	742700
128	North Branch Nippersink Creek--mouth to mile 2.1	742700		Outlet to Nippersink Creek in Illinois	
129	Marie Lake	743000	130	Elizabeth Lake	742800
130	Elizabeth Lake	742800		Outlet to Trib. of Nippersink Creek (IL)	
131	Center Lake	747300	132	Camp Lake	747100
132	Camp Lake	747100	133	Unnamed Stream	746600
133	Unnamed Stream	746600		Outlet to Channel Lake in Illinois	
134	Trevor Creek	745600		Outlet to Lake Catherine in Illinois	
135	Benet Lake	734800	136	Local Water	734300
136	Local Water	734300	137	Dutch Gap Canal (N Mill Creek)	734100
137	Dutch Gap Canal (N Mill Creek)	734100		Outlet to North Mill Creek in Illinois	
138	Local Water	739600	144	Brighton Creek	737400
139	Vern Wolf Lake	739100	144	Brighton Creek	737400
140	Local Water	738500	144	Brighton Creek	737400
141	Paddock Lake	737900	143	Salem Branch (Hooker Lake Outlet)	737500
142	Hooker Lake	738400	143	Salem Branch (Hooker Lake Outlet)	737500
143	Salem Branch (Hooker Lake Outlet)	737500	144	Brighton Creek	737400
144	Brighton Creek	737400	150	Des Plaines River--mile 12.9 to 15.2	734000

TMDL Reach	Waterbody Name	WBIC	Downstream TMDL Reach	Downstream Waterbody Name	Downstream WBIC
145	Tributary to the Des Plaines River	740140	149	Des Plaines River--mile 15.2 to 23.2	734000
146	Local Water	5040564	149	Des Plaines River--mile 15.2 to 23.2	734000
147	Local Water	737250	148	Center Creek	737200
148	Center Creek	737200	157	Des Plaines River--mile 4.4 to 6.8	734000
149	Des Plaines River--mile 15.2 to 23.2	734000	150	Des Plaines River--mile 12.9 to 15.2	734000
150	Des Plaines River--mile 12.9 to 15.2	734000	151	Des Plaines River--mile 6.8 to 12.9	734000
151	Des Plaines River--mile 6.8 to 12.9	734000	157	Des Plaines River--mile 4.4 to 6.8	734000
152	Kilbourn Road Ditch--mile 9.7 to 12.0	736900	153	Kilbourn Road Ditch--mile 3.7 to 9.7	736900
153	Kilbourn Road Ditch--mile 3.7 to 9.7	736900	154	Kilbourn Road Ditch--mouth to mile 3.7	736900
154	Kilbourn Road Ditch--mouth to mile 3.7	736900	157	Des Plaines River--mile 4.4 to 6.8	734000
155	Lake Andrea	733850	156	Lower Pleasant Prairie Dit.	736300
156	Lower Pleasant Prairie Dit.	736300	158	Des Plaines River--mouth to mile 4.4	734000
157	Des Plaines River--mile 4.4 to 6.8	734000	158	Des Plaines River--mouth to mile 4.4	734000
158	Des Plaines River--mouth to mile 4.4	734000		Outlet to Des Plaines River in Illinois	