

# Appendix B: Allocation Tables

## The Lake Pepin TMDL:

### Total Maximum Daily Loads for Total Phosphorus

#### **Contents:**

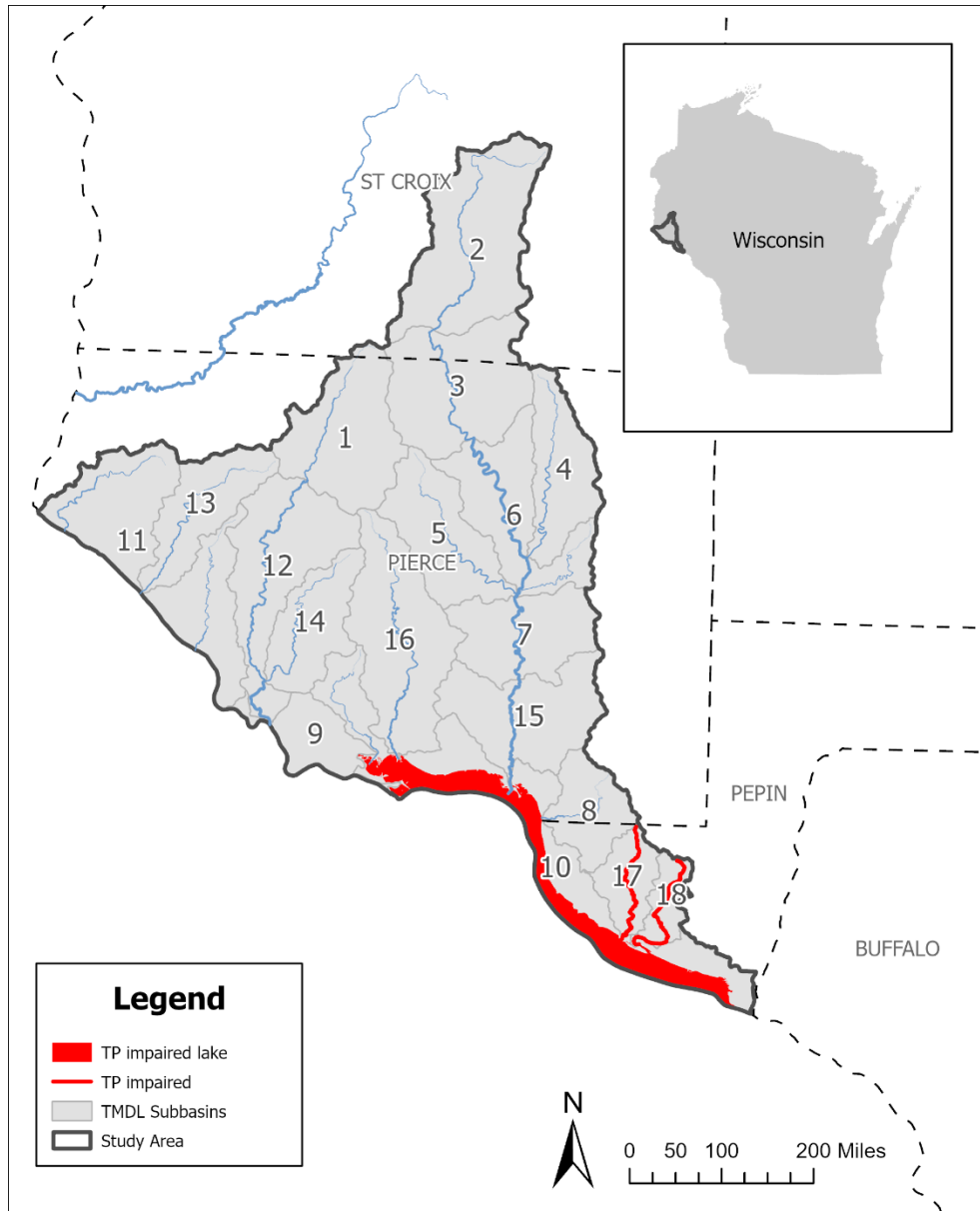
Figure B1: Map of TMDL Subbasin IDs for the Wisconsin Lake Pepin TMDL Area

Table B1: Annual Total Phosphorus Load Allocations by TMDL Subbasin

Table B2: Daily Total Phosphorus Load Allocations by TMDL Subbasin

Table B3: Total Phosphorus Wasteload Allocations for Individual Permitted Point Sources

Table B4: Percent Reductions for Total Phosphorus for Agricultural Nonpoint and Non-permitted Urban



**Figure B2: Map of TMDL Subbasin IDs for the Wisconsin Lake Pepin TMDL Area**

**Table B1: Annual Total Phosphorus Load Allocations by TMDL Subbasin**

Note: Some columns names have been abbreviated: Load cap. = loading capacity, LA = load allocation (background, agriculture, non-permitted urban), WLA = wasteload allocation (general permits, MS4s, individual permits), RC = reserve capacity, BG = background load, Agric. = agriculture allocation, NPU = non-permitted urban allocation, GP = general permits, IP = individual permits.

Amounts shown are rounded; therefore, subtotals and totals may not sum exactly.

<b>TMDL Subbasin</b>	<b>TMDL Subbasin Name</b>	<b>Total (LA+WLA+RC) (lbs./year)</b>	<b>LA (BG+Ag+NPU) (lbs./year)</b>	<b>BG (lbs./year)</b>	<b>Agric. (lbs./year)</b>	<b>NPU (lbs./year)</b>	<b>WLA (GP+MS4+IP) (lbs./year)</b>	<b>GP (lbs./year)</b>	<b>MS4 (lbs./ year)</b>	<b>IP (lbs./year)</b>	<b>RC (lbs./ year)</b>
1	Trimbelle River—mile 19.0 to headwaters	4,205	4,126	1,200	2,847	79	52	52	0	0	27
2	Rush River—mile 34.3 to headwaters	11,021	8,460	1,000	6,436	1,024	2,524	71	0	2,453	38
3	Rush River—mile 25.9 to mile 34.3	5,160	5,070	1,284	3,700	86	59	59	0	0	31
4	Cave Creek	3,627	3,574	622	2,878	74	35	35	0	0	18
5	Lost Creek (tributary to Rush River)	4,502	4,439	678	3,691	70	41	41	0	0	22
6	Rush River—mile 13.4 to mile 25.9	4,465	4,394	900	3,429	65	47	47	0	0	25
7	Rush River—mouth to mile 13.4	4,200	4,139	681	3,359	99	40	40	0	0	21
8	Pine Creek	2,749	2,711	382	2,311	17	25	25	0	0	13
9	Mississippi River	2,753	2,275	882	833	559	467	22	0	445	11
10	Lake Pepin	9,955	8,549	4,859	3,074	616	1,359	88	0	1,270	47
11	Mississippi River	9,711	8,047	1,473	5,889	685	1,624	74	0	1,550	39
12	Trimbelle River—mouth to mile 19.0	5,421	5,335	1,122	3,843	370	56	56	0	0	30
13	Big River	3,022	2,971	701	2,186	84	33	33	0	0	18
14	Little Trimbelle River	3,391	3,343	526	2,703	114	32	32	0	0	17
15	Rush River—mouth to mile 7.4	4,852	4,638	882	3,717	38	189	48	0	141	25
16	Isabelle Creek	9,078	6,460	1,051	5,044	366	2,584	63	0	2,521	34
17	Bogus Creek	2,262	2,235	526	1,680	29	18	18	0	0	9
18	Lost Creek (tributary to Lake Pepin)	1,506	1,488	892	581	15	12	12	0	0	6

**Table B2: Daily Total Phosphorus Load Allocations by TMDL Subbasin**

Note: Some columns names have been abbreviated: Load cap. = loading capacity, LA = load allocation (background, agriculture, non-permitted urban), WLA = wasteload allocation (general permits, MS4s, individual permits), RC = reserve capacity, BG = background load, Agric. = agriculture allocation, NPU = non-permitted urban allocation, GP = general permits, IP = individual permits.

Amounts shown are rounded; therefore, subtotals and totals may not sum exactly.

<b>TMDL Subbasin</b>	<b>TMDL Subbasin Name</b>	<b>Total (LA+WLA+RC) (lbs./day)</b>	<b>LA (BG+Ag+NPU) (lbs./day)</b>	<b>BG (lbs./day)</b>	<b>Agric. (lbs./day)</b>	<b>NPU (lbs./day)</b>	<b>WLA (GP+MS4+IP) (lbs./day)</b>	<b>GP (lbs./day)</b>	<b>MS4 (lbs./day)</b>	<b>IP (lbs./day)</b>	<b>RC (lbs./day)</b>
<b>1</b>	Trimbelle River—mile 19.0 to headwaters	<b>11.51</b>	<b>11.30</b>	3.29	7.79	0.22	<b>0.14</b>	0.14	0.00	0.00	<b>0.07</b>
<b>2</b>	Rush River—mile 34.3 to headwaters	<b>30.17</b>	<b>23.16</b>	2.74	17.62	2.80	<b>6.91</b>	0.19	0.00	6.72	<b>0.10</b>
<b>3</b>	Rush River—mile 25.9 to mile 34.3	<b>14.13</b>	<b>13.88</b>	3.51	10.13	0.24	<b>0.16</b>	0.16	0.00	0.00	<b>0.09</b>
<b>4</b>	Cave Creek	<b>9.93</b>	<b>9.79</b>	1.70	7.88	0.20	<b>0.10</b>	0.10	0.00	0.00	<b>0.05</b>
<b>5</b>	Lost Creek (tributary to Rush River)	<b>12.32</b>	<b>12.15</b>	1.86	10.10	0.19	<b>0.11</b>	0.11	0.00	0.00	<b>0.06</b>
<b>6</b>	Rush River—mile 13.4 to mile 25.9	<b>12.23</b>	<b>12.03</b>	2.46	9.39	0.18	<b>0.13</b>	0.13	0.00	0.00	<b>0.07</b>
<b>7</b>	Rush River—mouth to mile 13.4	<b>11.50</b>	<b>11.33</b>	1.87	9.20	0.27	<b>0.11</b>	0.11	0.00	0.00	<b>0.06</b>
<b>8</b>	Pine Creek	<b>7.53</b>	<b>7.42</b>	1.05	6.33	0.05	<b>0.07</b>	0.07	0.00	0.00	<b>0.04</b>
<b>9</b>	Mississippi River	<b>7.54</b>	<b>6.23</b>	2.41	2.28	1.53	<b>1.28</b>	0.06	0.00	1.22	<b>0.03</b>
<b>10</b>	Lake Pepin	<b>27.26</b>	<b>23.41</b>	13.30	8.42	1.69	<b>3.72</b>	0.24	0.00	3.48	<b>0.13</b>
<b>11</b>	Mississippi River	<b>26.59</b>	<b>22.03</b>	4.03	16.12	1.88	<b>4.45</b>	0.20	0.00	4.24	<b>0.11</b>
<b>12</b>	Trimbelle River—mouth to mile 19.0	<b>14.84</b>	<b>14.61</b>	3.07	10.52	1.01	<b>0.15</b>	0.15	0.00	0.00	<b>0.08</b>
<b>13</b>	Big River	<b>8.27</b>	<b>8.13</b>	1.92	5.99	0.23	<b>0.09</b>	0.09	0.00	0.00	<b>0.05</b>
<b>14</b>	Little Trimbelle River	<b>9.28</b>	<b>9.15</b>	1.44	7.40	0.31	<b>0.09</b>	0.09	0.00	0.00	<b>0.05</b>
<b>15</b>	Rush River—mouth to mile 7.4	<b>13.28</b>	<b>12.70</b>	2.42	10.18	0.10	<b>0.52</b>	0.13	0.00	0.39	<b>0.07</b>
<b>16</b>	Isabelle Creek	<b>24.85</b>	<b>17.69</b>	2.88	13.81	1.00	<b>7.07</b>	0.17	0.00	6.90	<b>0.09</b>
<b>17</b>	Bogus Creek	<b>6.19</b>	<b>6.12</b>	1.44	4.60	0.08	<b>0.05</b>	0.05	0.00	0.00	<b>0.03</b>
<b>18</b>	Lost Creek (tributary to Lake Pepin)	<b>4.12</b>	<b>4.07</b>	2.44	1.59	0.04	<b>0.03</b>	0.03	0.00	0.00	<b>0.02</b>

**Table B3: Total Phosphorus Wasteload Allocations for Individual Permitted Point Sources**

TMDL Subbasin	Permit no.	Outfall no.	Facility Name	Allocation (lbs./year)	Allocation (lbs./day)
2	26891	1	BALDWIN WASTEWATER TREATMENT FACILITY	2,452	6.71
9	61255	1	BAY CITY VILLAGE	445	1.22
16	22942	1	ELLSWORTH COOP CREAMERY	870	2.38
16	21253	1	ELLSWORTH WASTEWATER TREATMENT FACILITY	1,649	4.52
15	32361	1	MAIDEN ROCK WASTEWATER TREATMENT FACILITY	141	0.39
10	22811	1	PEPIN WASTEWATER TREATMENT FACILITY	1,269	3.48
11	22403	1	PRESCOTT WASTEWATER TREATMENT FACILITY	1,549	4.24

**Table B4: Percent Reduction for Total Phosphorus for Agricultural Nonpoint and Non-permitted Urban** *Agric. = agriculture, NPU = non-permitted urban*

TMDL Subbasin	DNR Modeled Agric. and NPU Load	MPCA Recommended Reduction for Lake Pepin		Additional Reduction for Local Water Quality		Total Reduction from DNR Modeled Load		Allocation for Agric. and NPU
	(lbs./yr)	%	(lbs./yr)	%	(lbs./yr)	%	(lbs./yr)	(lbs./yr)
1	3,658	20%	732	0.0%	-	20.0%	732	2,926
2	9,782	20%	1,956	4.7%	366	23.7%	2,322	7,460
3	4,734	20%	947	0.0%	-	20.0%	947	3,787
4	3,690	20%	738	0.0%	-	20.0%	738	2,952
5	4,700	20%	940	0.0%	-	20.0%	940	3,760
6	4,368	20%	874	0.0%	-	20.0%	874	3,494
7	4,321	20%	864	0.0%	-	20.0%	864	3,457
8	2,911	20%	582	0.0%	-	20.0%	582	2,329
9	1,741	20%	348	0.0%	-	20.0%	348	1,393
10	4,613	20%	923	0.0%	-	20.0%	923	3,690
11	8,217	20%	1,643	0.0%	-	20.0%	1,643	6,574
12	5,265	20%	1,053	0.0%	-	20.0%	1,053	4,212
13	2,837	20%	567	0.0%	-	20.0%	567	2,270
14	3,521	20%	704	0.0%	-	20.0%	704	2,817
15	4,694	20%	939	0.0%	-	20.0%	939	3,755
16	7,174	20%	1,435	5.7%	327	24.6%	1,762	5,412
17	2,136	20%	427	0.0%	-	20.0%	427	1,709
18	2,189	20%	438	66.0%	1,156	72.8%	1,594	595