



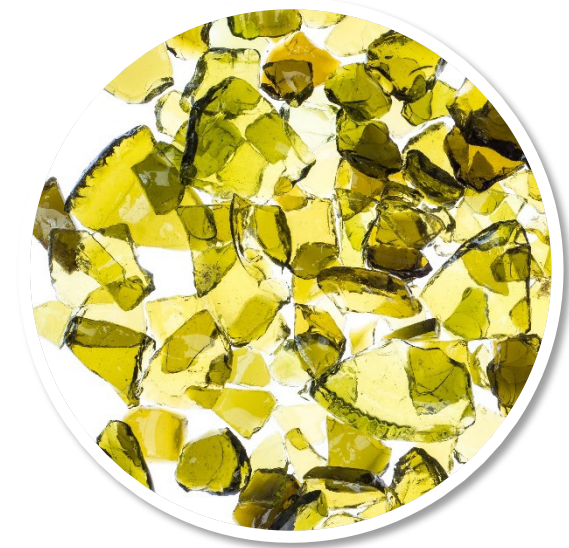
# Sibelco

Glass Recycling – North America  
June 2026

# Glass Recycling – North America



- Established in 1896 as a recycling partner to GE for lightbulb glass
- The leading glass recycler in North America, with 43 locations
- ~2.4 million tons (4.8B lbs.) of recycled materials processed each year\*
- Acquired by Sibelco in June 2024 – now largest glass recycler in the world (Sibelco.com)
- Strong focus on advocacy, operational excellence and collaborative partnerships
- Demand for recycled glass allows our customers to:
  - Reduce manufacturing costs
  - Lengthen the life of furnaces
  - Improve sustainability
  - Reduce energy and CO<sub>2</sub> emissions
  - Increase recycled content in products



*\*SMI also recycles ferrous, non-ferrous, cardboard, plastic and other materials*

# Our Footprint



## 43 locations across North America

- 34 in the U.S.
  - 32 plants
  - 2 offices
- 4 in Canada
- 5 in Mexico

# Recycled Glass Markets



- Flexibility in markets is critical to overall glass recycling success due to size, color and chemistry of glass.
- We prioritize markets by hierarchy of recycling.



**CONTAINER  
GLASS**



**FIBERGLASS  
INSULATION**



**FLAT GLASS**



**FLACONS**



**TERRAZZO  
FLOORING**



**HIGHWAY  
SAFETY BEAD**



**SAND REPLACEMENTS:  
FILTRATION, ABRASIVES, CARPET BACKING**

# Glass Recycling Circular Economy

- Recycled glass enables manufacturers to create more sustainable glass packaging, replacing virgin materials and less energy, which means lower CO<sub>2</sub> emissions.
- The melting point of cullet is lower than that of virgin materials.
- **As a general rule, 10% cullet results in a 2.5 to 3% reduction of furnace energy consumption.**



*\*Note: we do not wash the material*

# Collection: Pros & Cons



## UNDERSTANDING RECYCLING STREAMS

Knowing which method of glass recycling is most effective will help you choose the method that will make the greatest impact.

### SINGLE STREAM

Glass is mixed with other recyclables in the same bin, collected, sorted, and manufactured into new containers.



**40%**

of single stream glass is suitable to be recycled into new containers.

Highest volume, tied to convenience; lower quality; cost-effective

### COMMUNITY DROP OFF

Glass and other recyclables are separated by the consumer at their drop-off location.



**60%**

of community drop-off glass is suitable to be recycled into new containers.

Low volume, high quality, inconvenient & expensive

### MANAGED SEPARATE STREAM

Glass and other recyclables are separated and sorted BEFORE being picked up curbside or dropped off.



**92%**

of managed separate stream glass is suitable to be recycled into new containers.

Mid volume, high quality, convenient, expensive, CO2 impact

### DEPOSIT STREAM

Consumer returns glass to redemption facility and collects money per item returned.



**98%**

of deposit stream glass is suitable to be recycled into new containers.

High volume, high quality, inconvenient, relies on redemption



# Quality by Stream



## Single-Stream / MRF/ Curbside



## Drop-off, Source-Separated & Deposit Glass

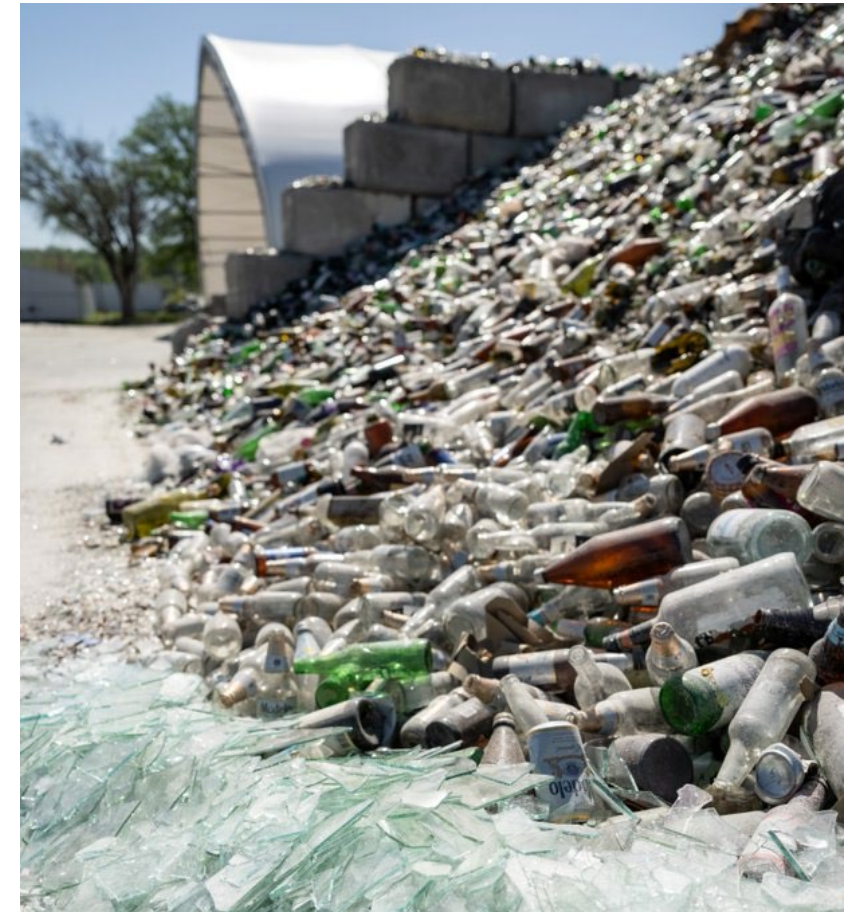
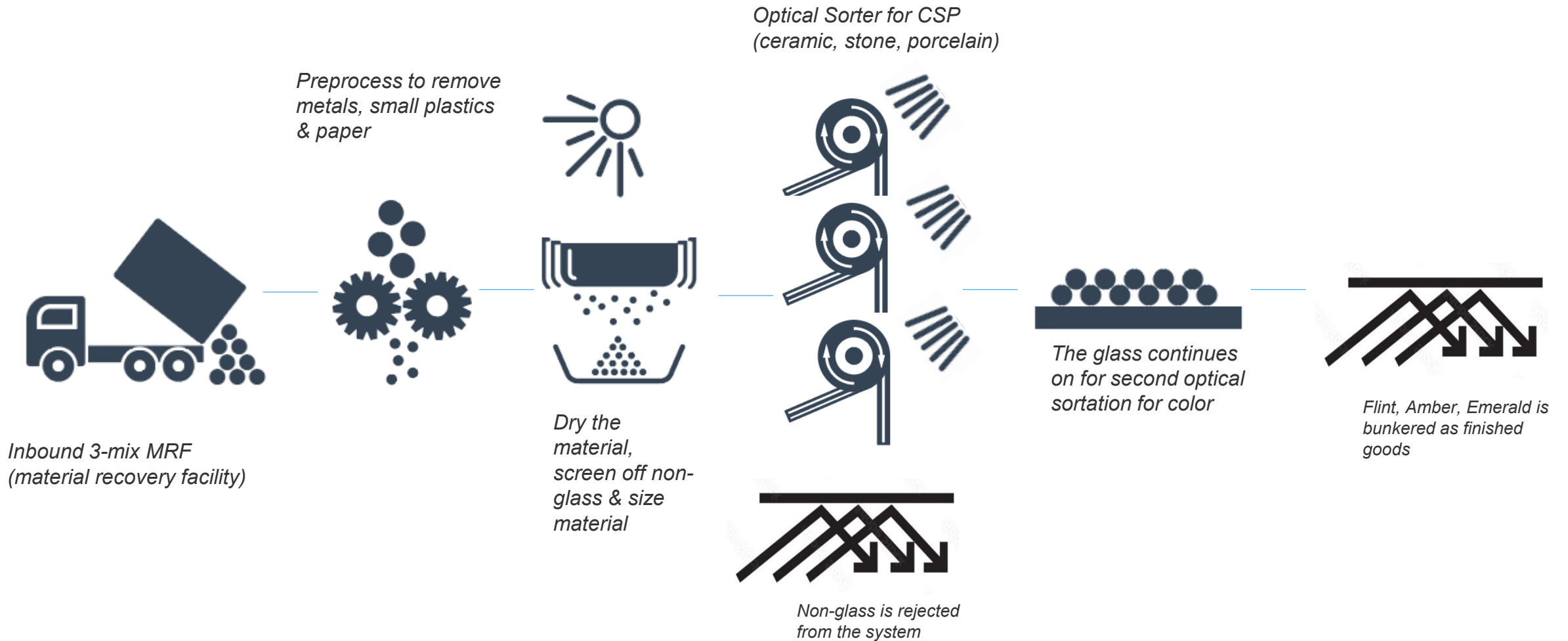
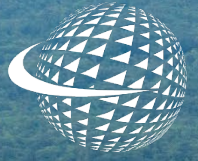


Photo: RippleGlass.com

# Our Operations



[Full Video on  
YouTube](#)



**SIBELCO**

# Thank you

[laura.hennemann@sibelco.com](mailto:laura.hennemann@sibelco.com)

281.638.6469