

An architectural rendering of a modern building complex with a central courtyard. The buildings have large glass facades and flat roofs. The courtyard is landscaped with trees and walkways, and is enclosed by a red dashed line. The scene is set during sunset or sunrise, with a warm, golden light. The overall tone is professional and modern.

Battery Collection Growth in Illinois

James Jennings, Interim Director

Illinois EPA



- Americans consume millions of single use and rechargeable batteries annually
- Designed with a wide range of chemical components tailored to intended use
- Chemistry dictates end of life handling

Historic Collection Practices

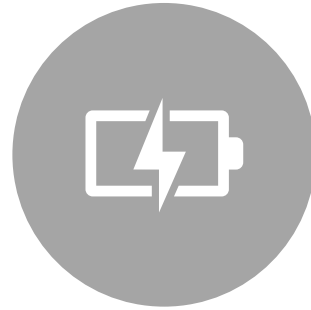
- IEPA-supported HHW collections
- Local government-sponsored events
- Call2Recycle and other private efforts



Programmatic Evaluation Results



SIGNIFICANT GROWTH
POTENTIAL



COLLECTED 37,500 POUNDS
OF BATTERIES, ON AVERAGE,
PER YEAR (750K BATTERIES)

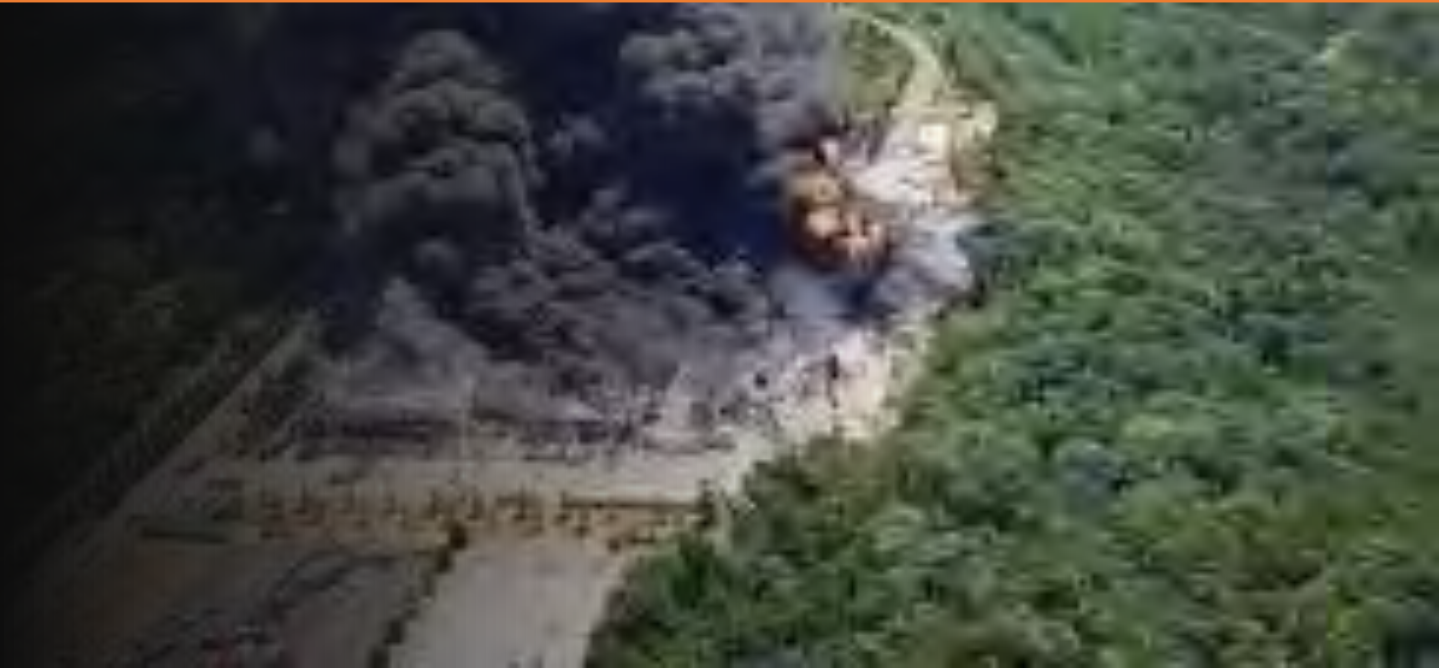


INADEQUATE POPULATION
COVERAGE



INEFFICIENT ONE DAY EVENT
SELECTION CRITERIA

Safety Concerns



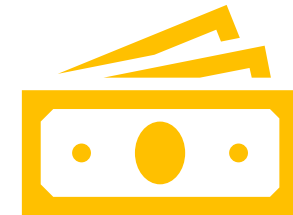
Expansion Objectives



Develop a sustainable HHW collection network that is within a half hour drive of more than 90 percent of the state population



Augment the HHW network with free battery collection opportunities in each county



Avoid new spending

Expansion methodology

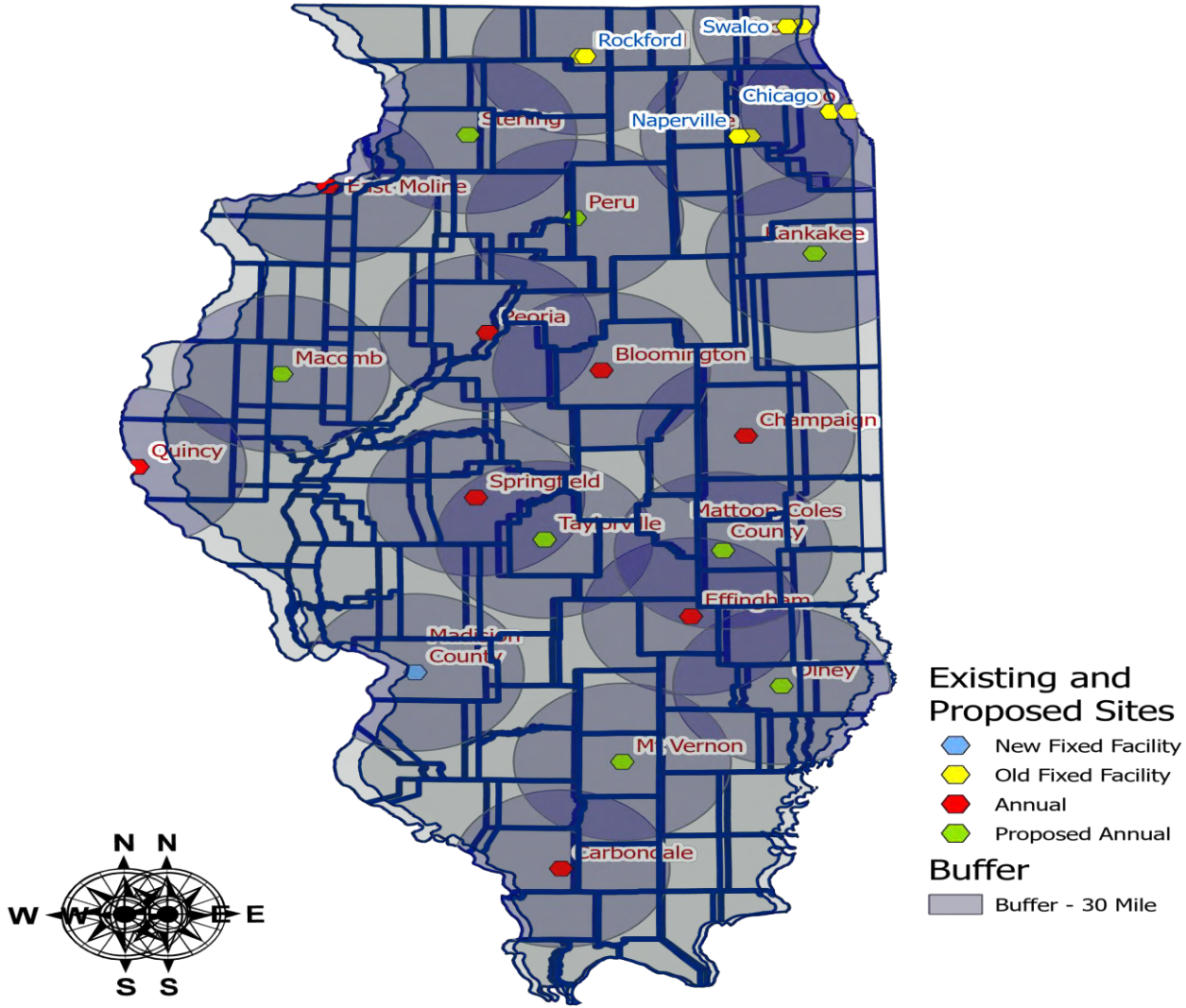
Identify viable long-term HHW collection facility partners

Hub-and-spoke approach to selecting HHW collection events

Engage additional units of local government to serve as battery collection sites

Existing and Proposed Wastewater Treatment Plants

Wastewater Collection Facilities





U.S. DEPARTMENT OF **ENERGY**



- \$2,000,000

Bipartisan Infrastructure Law (BIL)

Consumer Electronics Battery Recycling, Reprocessing, and Battery Collection

Goals

1 site per 10,000+ muni

1 site per county w/o 10,000+ muni

200+ sites statewide

1,200+ days of collection



Four Year Award

- Yr 1 **Site Recruitment & Initial Collections**
 - Outreach Materials
 - Host 3+ Listening Sessions
 - Intent to Participate Forms
 - Local Governments
 - Community Based Organizations
- Yrs 2-4 **Collections & Continued Recruitment**
 - Collections
 - Narrowly Tailored Site Recruitment
 - Enhanced Public Education
 - Emphasis on EJ Communities



Illinois Portable and Medium-Format Battery Stewardship Act

- Creates an extended producer responsibility program for small and medium format batteries
- Establishes consumer battery recycling goals
 - Rechargeable batteries- 60 percent
 - All other primary batteries- 70 percent
- Establishes collection network standards
 - One permanent collection site within a 15-mile radius for 95 percent of the state's population
 - At least one collection site or event for every 30,000 residents in a single county
- Program year one begins on January 1, 2028



Questions/Comments

James Jennings, Deputy Director

Illinois Environmental Protection Agency

(217) 782-0547

james.m.Jennings@illinois.gov