

WISCONSIN DEPARTMENT OF NATURAL RESOURCES
OFFICE OF GREAT WATERS
LAKE SUPERIOR TEAM

2025 Projects

OUR TEAM



Matt Boehlke

Lake Superior Phragmites Specialist



Dara Fillmore

Lake Superior Basin and St Louis River AOC Specialist



Ellen Coffman

Lake Superior Sediment and Monitoring Coordinator



Cherie Hagen

Lake Superior Unit Manager



Valerie Damstra

Lake Superior Binational Program Coordinator



Matt Steiger

Western Lake Superior and St Louis River AOC Coordinator

CONTACT US

dnr.wisconsin.gov/contact
cherie.hagen@wisconsin.gov
715-416-4426



OUR APPROACH

FORM PARTNERSHIPS AND COLLABORATE WITH DIVERSE KNOWLEDGE HOLDERS TO ACHIEVE A SHARED VISION ALIGNED WITH LAKEWIDE AND REGIONAL GOALS



DEVELOP AND IMPLEMENT PROJECTS TO PROTECT HIGH-QUALITY HABITATS, RESTORE DEGRADED ECOSYSTEMS, AND MANAGE INVASIVE SPECIES



ENGAGE LOCAL COMMUNITIES AND DESIGN RESILIENT PROJECTS TO CREATE A SUSTAINABLE FUTURE FOR ALL BEINGS IN THE BASIN



LEVERAGE SCIENCE AND OTHER WAYS OF KNOWING TO ASSESS ECOLOGICAL CONDITION, MONITOR LONG-TERM TRENDS, AND ADDRESS EMERGING ECOSYSTEM CHALLENGES



The Great Lakes hold one-fifth of the world's fresh water.

Wisconsin's Lake Superior and Lake Michigan waters are critical for those who live along them and for the state's economy, environment, and quality of life.





The WDNR's Office of Great Waters (OGW) is charged with implementing a comprehensive program to protect the lakes, identify problems and solutions, and serve as a point of contact for the Great Lakes community in Wisconsin.

The Lake Superior Team works closely with partners and other WDNR programs to protect and restore the Lake Superior basin's natural resources.

This work is made possible through partnership and collaboration with countless local, state, tribal and federal partners, Great Lakes Restoration Initiative (GLRI) funding from US EPA, the WDNR Office of Great Waters team and Lake Superior Team Members. Thank you for your continued dedication and passion to protect and restore Lake Superior!

OUR PROJECTS

The WDNR Office of Great Waters Lake Superior Team helps implement a variety of restoration and protection projects throughout the Lake Superior Basin. These projects are carried out through collaboration and cooperation with various programs within WDNR, as well as partners from local, state, and tribal governments, federal agencies, and non-governmental organizations. The majority of these projects are funded by the federal Great Lakes Restoration Initiative (GLRI). Projects listed are underway or just getting started in 2025.

 ST LOUIS RIVER AOC AND CONTAMINANTS	 INVASIVE SPECIES
 NONPOINT POLLUTION AND NEARSHORE MONITORING	 HABITATS AND SPECIES

1 PICKLE POND CLEAN-UP AND HABITAT RESTORATION

10 MARENGO RIVER NATURAL FLOOD MANAGEMENT COORDINATION

12 CLOUGH ISLAND INVASIVE CONTROL AND CONIFER RESTORATION

14 SIOUX RIVER YELLOW FLAG IRIS MAPPING AND CONTROL

16 ST LOUIS RIVER ISLAND ASH TREE RESILIENCY

2 MANOOMIN (WILD RICE) RESTORATION

11 FISH CREEK NINE KEY ELEMENT WATERSHED PLAN AND BMP IMPLEMENTATION

13 CITY OF ASHLAND INVASIVE SPECIES MANAGEMENT AND YOUTH ENGAGEMENT

15 PURPLE LOOSESTRIFE BIOCONTROL AT ALLOUEZ BAY AND CLOUGH ISLAND

17 WISCONSIN GREAT LAKES PHRAGMITES MAPPING AND CONTROL

3 SUPERIOR SLIPS SEDIMENT CLEAN-UP

4 PIPING PLOVER HABITAT PROJECT

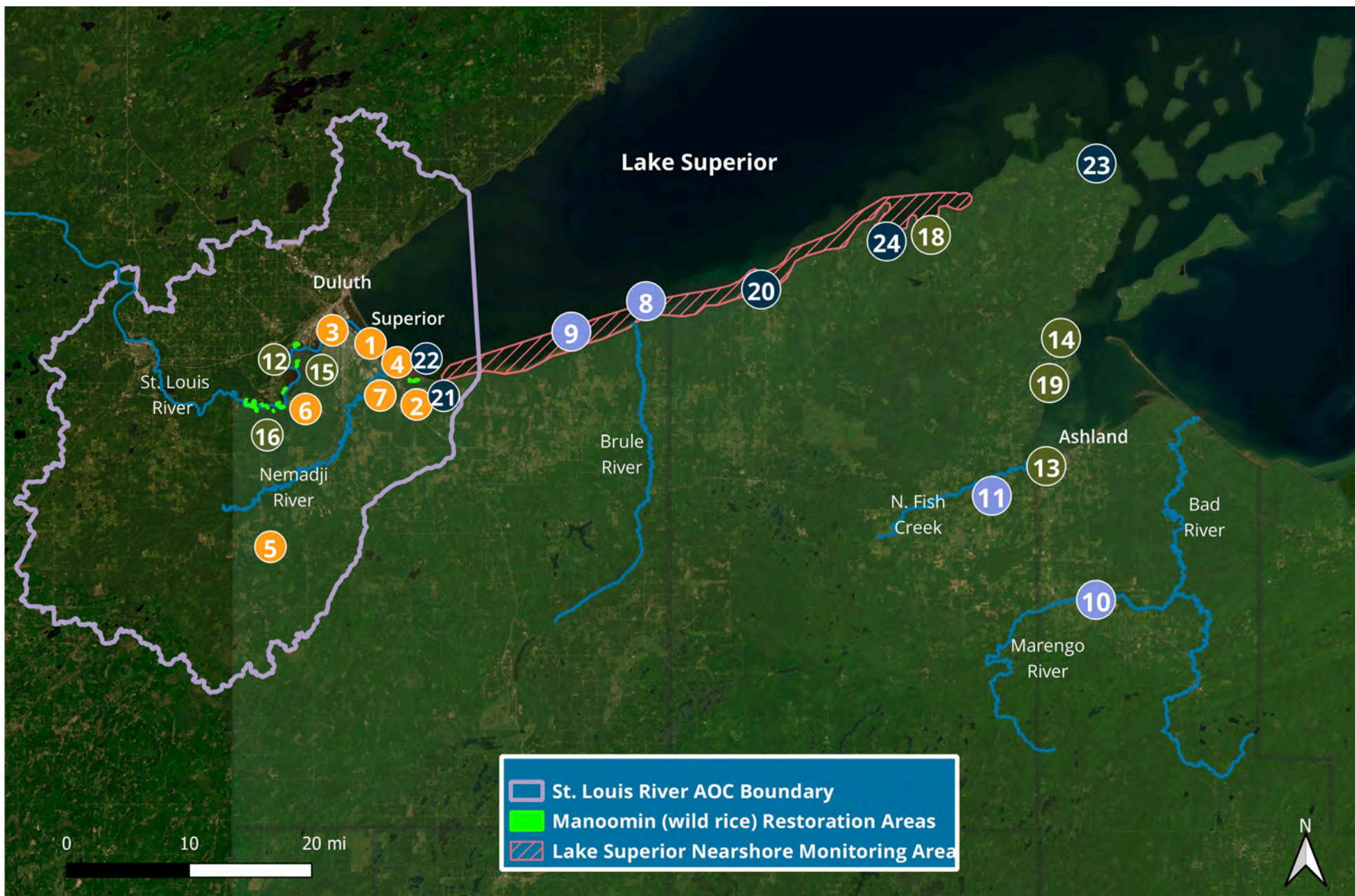
5 LITTLE BALSAM CREEK FISH PASSAGE PROJECT

6 MANOOMIN CONSUMPTION STUDY

7 CITY OF SUPERIOR 44TH AVE EAST DOCK WISCONSIN POINT CULTURAL CORRIDOR

8 LAKE SUPERIOR NEARSHORE ALGAL MONITORING

9 NATIONAL COASTAL CONDITION ASSESSMENT



18 LS COASTAL WETLAND AIS MANAGEMENT IMPLEMENTATION

19 INVASIVE KNOTWEED MAPPING AND CONTROL

20 MICHELE WHEELER WETLAND/ FLAG RIVER ESTUARY RESTORATION

21 ALLOUEZ BAY MARSH BIRD HABITAT RESTORATION

22 WISCONSIN POINT RESILIENCY STUDY

23 LAKE SUPERIOR COASTAL WETLAND RESILIENCY STUDY

24 LAKE SUPERIOR GROUNDWATER STUDY