

The Grant County Sycamore

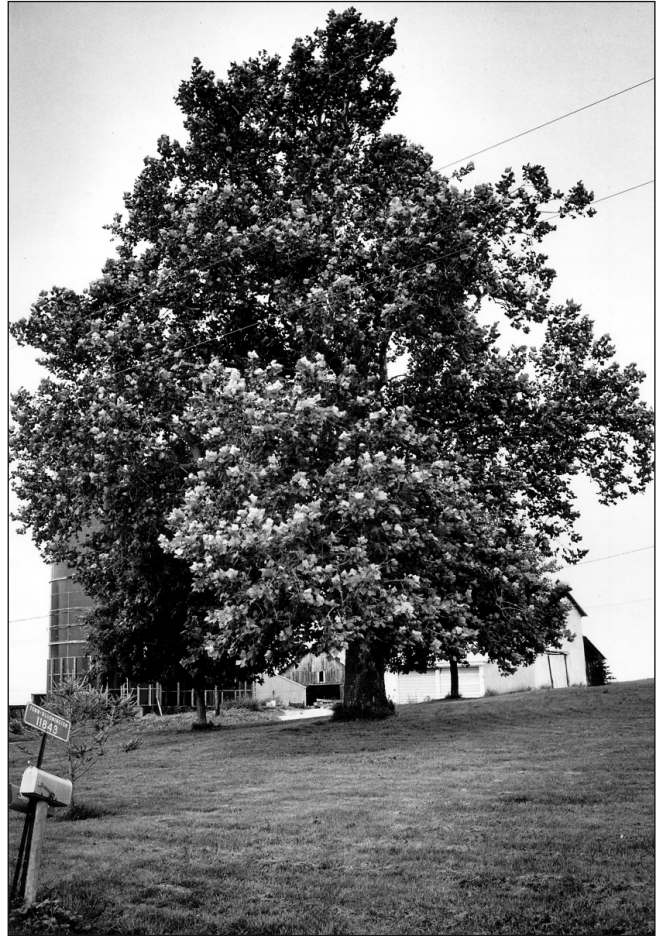
The farm is named Sycamore Crest Farm and the road is called Sycamore Road. And, yes, there is quite a story to the old sycamore.

One of Grant County's earliest settlers, Joseph Crain Orr, went south after the Civil War to find his son, who had been taken prisoner. Orr found him, but unfortunately, the young man was near death from his wounds and the effects of his long imprisonment. Though moved to a hospital in Tennessee, he died.

Orr, accompanying his son's coffin, returned to Wisconsin via his original home state of Ohio. While there, he chose a sycamore seedling to bring back to the new homestead. He planted the young tree in the yard, just south across a field from the local cemetery where he buried his son.

The massive sycamore was "discovered" shortly before its 100th birthday by the seventh and eighth grade classes at the nearby North Andover School near Bloomington in Grant County. They measured the tree and wrote to the State Conservation Department (now the Department of Natural Resources) suggesting the tree's inclusion among the state's record trees. Shortly afterwards, the tree gained official designation as the largest sycamore in Wisconsin at that time.

Source: Craig Tiedemann, Madison



Grant County Sycamore

B-Wolfgang Hoffmann (1979)