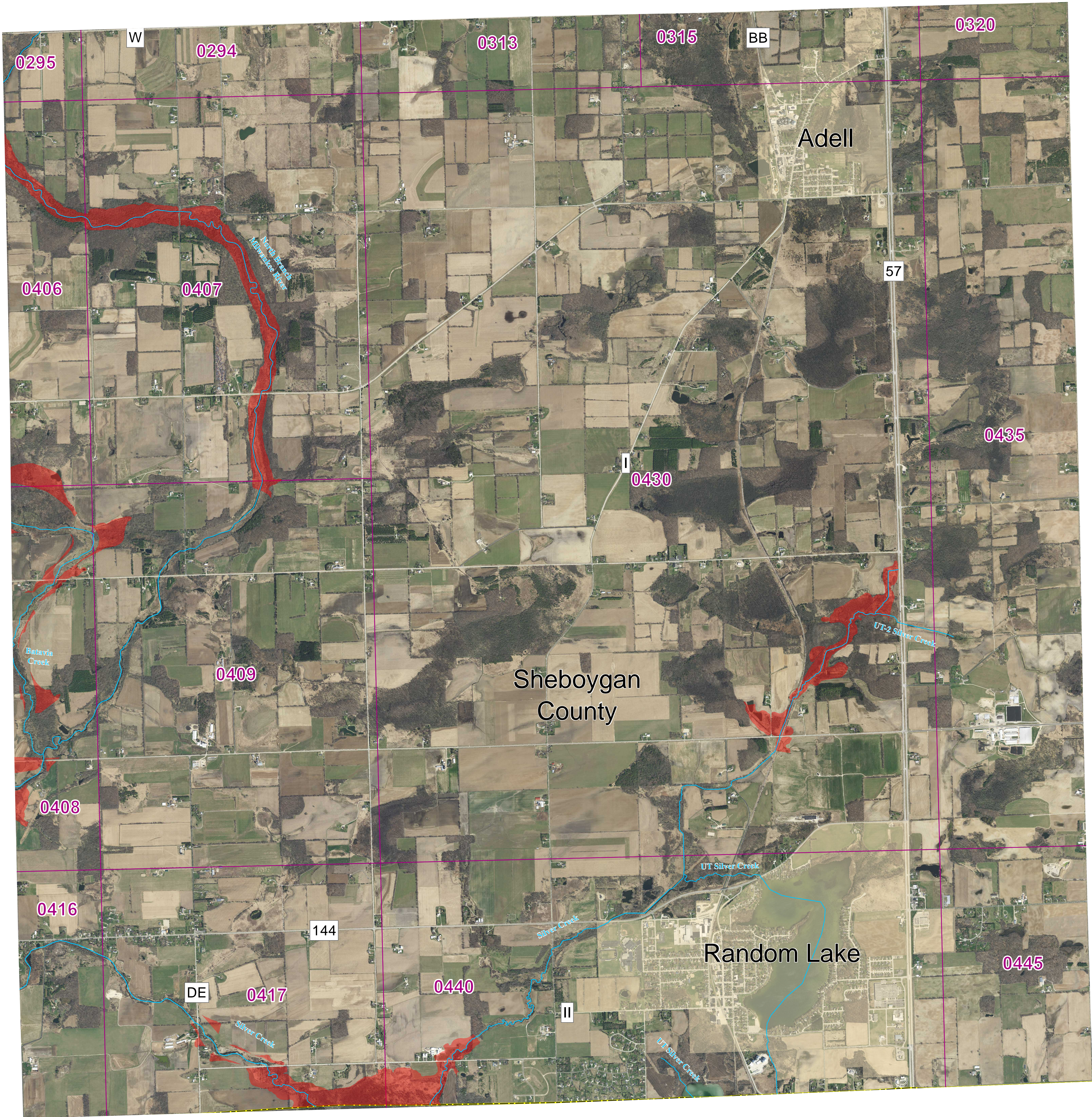


Sheboygan County and incorporated areas Flood Storage Districts

T13N R21E
Panel 14

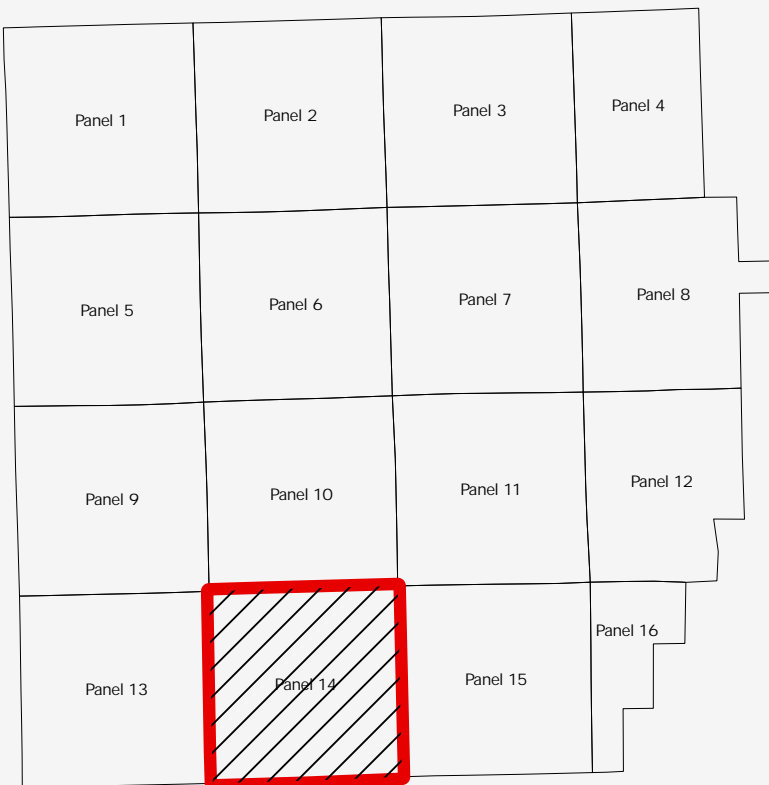
Sources of Study: WDNR
Effective Date: August 29, 2024
Approved by: WDNR



LEGEND

- Flood Storage Districts
- Rivers/streams
- FIRM Panel
- POLITICAL AREAS
- Sheboygan County
- Municipalities

0 1,250 2,500 5,000 Feet
1:18,000



Coordinate System: NAD 1983 HARN UTM Zone 16

Aerial photography was acquired in the Spring of 2020 and was provided in digital format by the Wisconsin Regional Orthophotography Consortium (WROC).

Flood Storage Districts available for download at DNR's Surface Water Data Viewer: dnr.wisconsin.gov/topic/SurfaceWater/swdv (or go to dnr.wi.gov and search "SWDV")

