



Price County Mapping Update

Data Development Kick-Off Meeting

January 24, 2022



FEMA

Reminders

- **Thank you for joining us!**
- **This meeting will be recorded**
- **Please remember to mute your own line if you are not speaking in order to minimize disruption**
- **Please use the chat box to ask questions throughout the presentation**
- **Type in your name and title in the chat box so we have a record of attendance**



FEMA

Meeting Agenda

- **Introductions**
- **Brief Review of Discovery**
- **Risk MAP Overview**
- **National Flood Insurance Program (NFIP)**
- **Desired Input from Communities**
- **Price County Map Update & Timeline**
- **Hazard Mitigation Planning Status**
- **Individual questions/discussion**
- **Close**



Welcome & Introduction

- **Risk MAP Project Team, Wisconsin Department of Natural Resources (WDNR)**
 - G. Fritz Statz- Project Lead
 - Betsy Finlay – CTP Program Coordinator
 - Brian Cunningham - NFIP Coordinator
 - Chad Heimerl- Project Engineer
 - Chris Olds- State Floodplain Engineer
 - Tanya Lourigan – Dam Safety/Floodplain Section Supervisor
- **Wisconsin Emergency Management (WEM)**
 - Guen Drewes – State Hazard Mitigation Officer

Introductions

- **Federal Emergency Management Agency (FEMA)**

- Munib Ahmad- Senior Engineer
- Frank Shockey- Region V Senior NFIP Specialist
- Nicholas Bruscato- Region V Emergency Management Specialist
- Cadence Peterson- Region V Planner

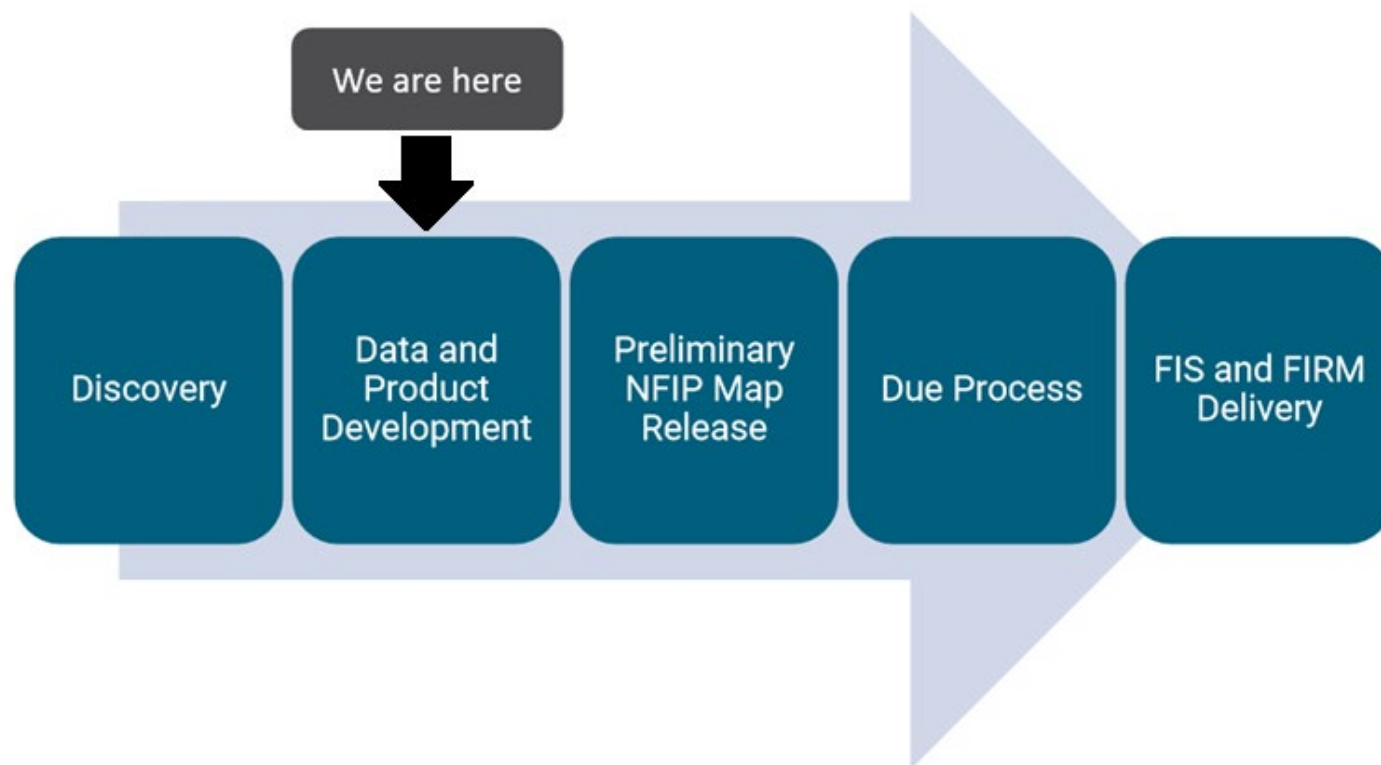
The Vision for Risk MAP

FEMA's Risk Mapping, Assessment, and Planning (Risk MAP) program involves collaboration with State, Local, and Tribal entities to deliver quality data that increases public awareness and leads to action that reduces risk to life and property



FEMA

Risk MAP Process



FEMA

National Flood Insurance Program (NFIP)

- **A voluntary program based on a mutual agreement between the Federal government and the local community:**
 - In exchange for adopting and enforcing floodplain management ordinances, Federally-backed flood insurance is made available to community property owners and disaster assistance.

- **NFIP Goals:**
 - ▶ Reduce the loss of life and property caused by flooding
 - ▶ Reduce rising disaster relief costs caused by flooding
 - ▶ Maintain the natural and beneficial functions of the floodplains



National Flood Insurance Program (NFIP)- Participating/Non-Participating Communities

CID	Community Name	County	Init FHBM Identified	Init FIRM Identified	Curr Eff Map Date	Reg- Emer Date
550527	CATAWBA, VILLAGE OF	PRICE COUNTY	11/08/74		(NSFHA)	06/28/79
550531	KENNAN, VILLAGE OF	PRICE COUNTY	11/08/74		(NSFHA)	06/28/79
550344#	PARK FALLS, CITY OF	PRICE COUNTY	01/16/74	12/15/89	12/15/89	12/15/89
550345	PHILLIPS, CITY OF	PRICE COUNTY	01/09/74	09/18/85	09/18/85(M)	09/18/85
550346	PRENTICE, VILLAGE OF	PRICE COUNTY	12/28/73	09/27/85	09/27/85(M)	09/27/85
550343#	PRICE COUNTY *	PRICE COUNTY	01/17/75	12/05/89	12/05/89	12/05/89



FEMA

National Flood Insurance Program (NFIP)- Participating/Non-Participating Communities

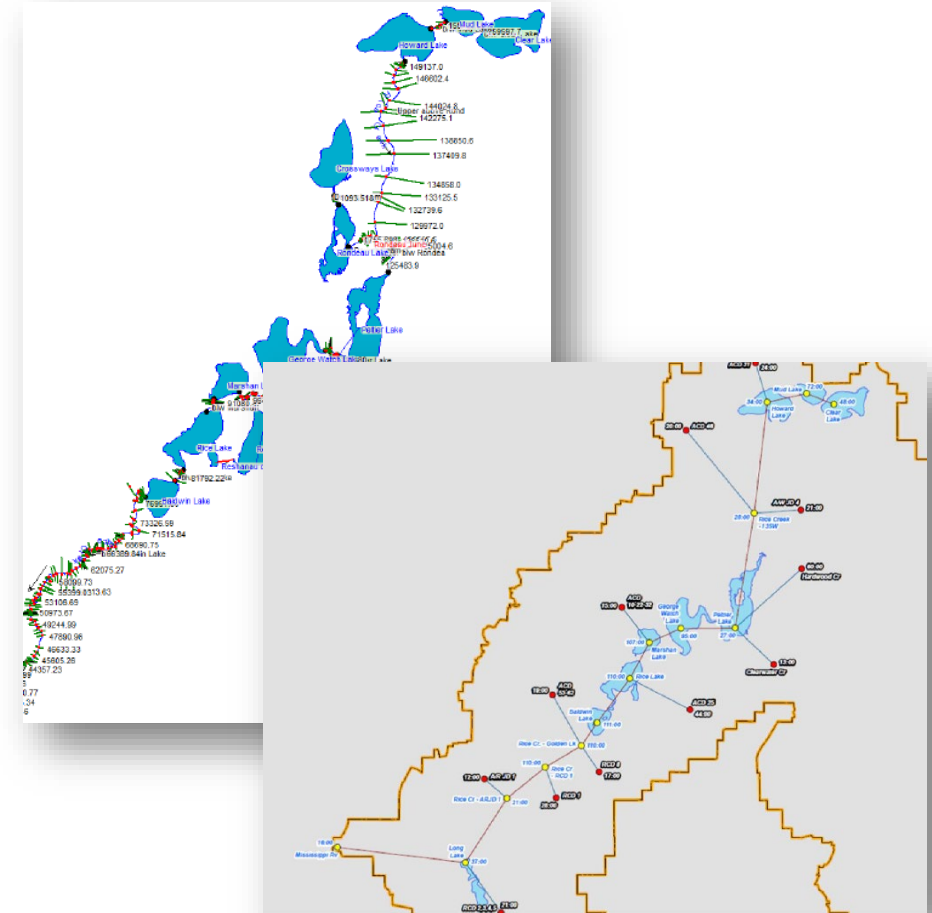
CID	Community	Policies	Insurance In Force	Total Paid Losses	Total Paid Amount
550527	CATAWBA, VILLAGE OF	0	0	0	0
550531	KENNAN, VILLAGE OF	0	0	0	0
550344#	PARK FALLS, CITY OF	1	350,000	0	0
550345B	PHILLIPS, CITY OF	0	0	0	0
550346B	PRENTICE, VILLAGE OF	0	0	0	0
550343#	PRICE COUNTY *	22	3,209,900	4	24,321
	County Total :	23	3,559,900	4	24,321
	Grand Total :	23	3,559,900	4	24,321



FEMA

What data are we looking for from you?

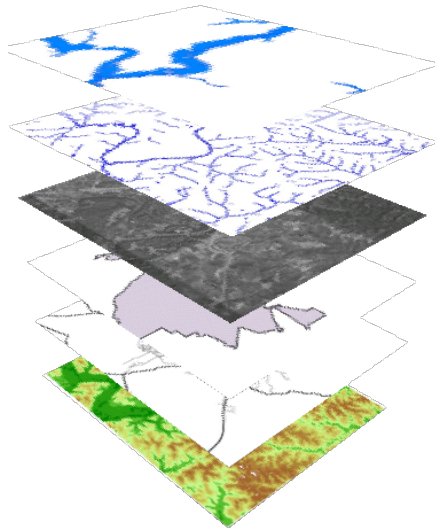
- **Existing Hydraulic and Hydrologic Studies**
 - USACE, USGS, DOT, Watershed Districts, developers, communities?
 - Study Date
 - Flooding Source and Location
 - Contact Info: name and email
 - **Must be submitted by communities to FEMA for use in project**



FEMA

What data are we looking for from you?

- **Contributions to LiDAR or other data to leverage into this Risk MAP effort?**
- **Some data listed below – please provide contact info for GIS person**



- Political Boundaries
- Major Roads
- Streams
- Dams
- Structures
- Areas of Mitigation Interest
- Essential Facility Data



FEMA

LiDAR – Topographic Data

Known Best Available Data

- LiDAR
 - Price County: **2018**



FEMA

Price County Map Update Timeline

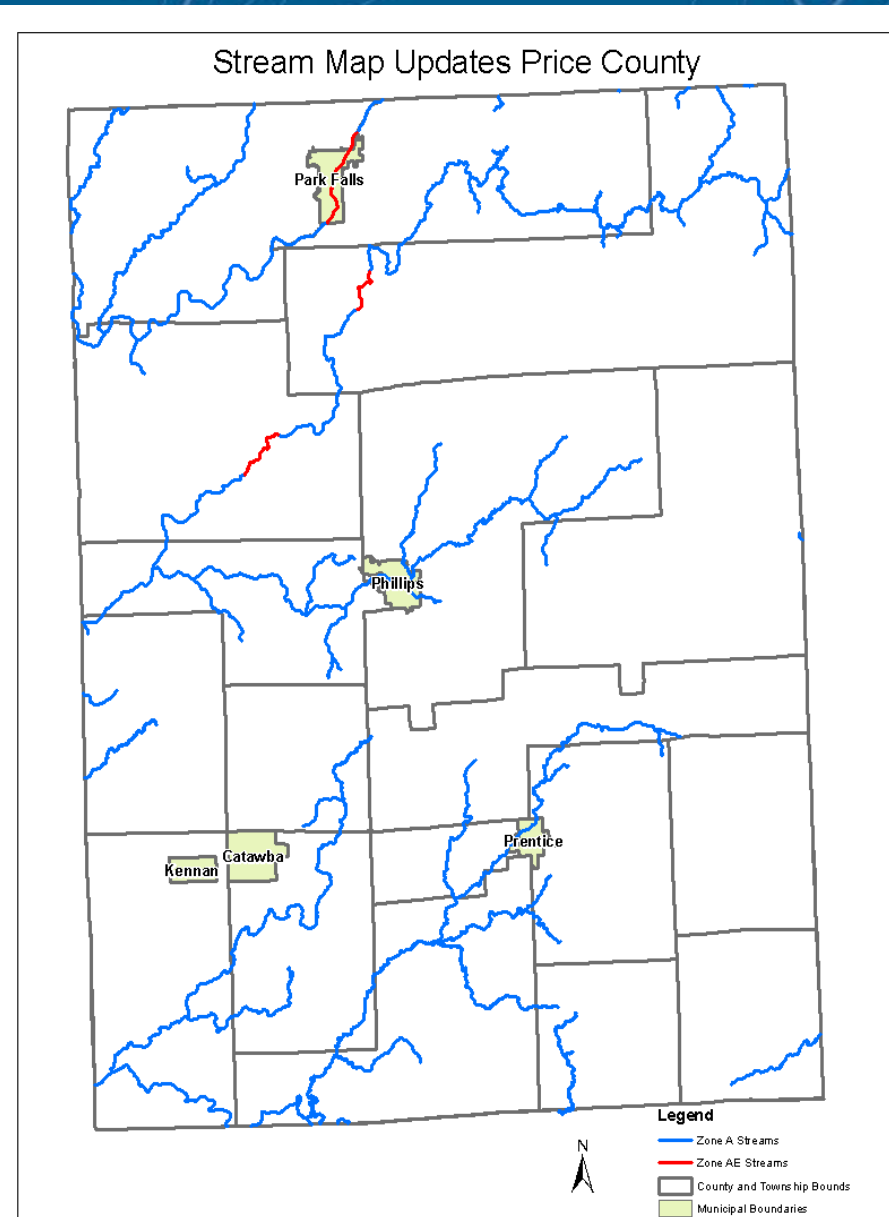
- **January 24, 2022: Data Development Kick-off Meeting**
- **Winter 2022/2023: Flood Risk Review Meetings**
 - Hydraulic Modeling Completed, data made digitally available to community officials
- **Future efforts (yet to be funded) would include preliminary and final countywide FIRMS**

Price County Map Update

- **Areas identified during Discovery & funded by FEMA will be updated. Goals are to:**
 - Redelineation for detailed Zone AE streams
 - Updated H&H for all approximate Zone A streams
 - Keep same level of detail: areas studied using approximate methods (A zones) will remain A zones & detailed (AE zones) will remain AE zones
 - Base Flood Elevations (BFE's), or the elevation to which floodwaters are anticipated to rise during a 1% annual chance flood, will not be published if not currently shown.
 - Share updated work map products digitally with communities

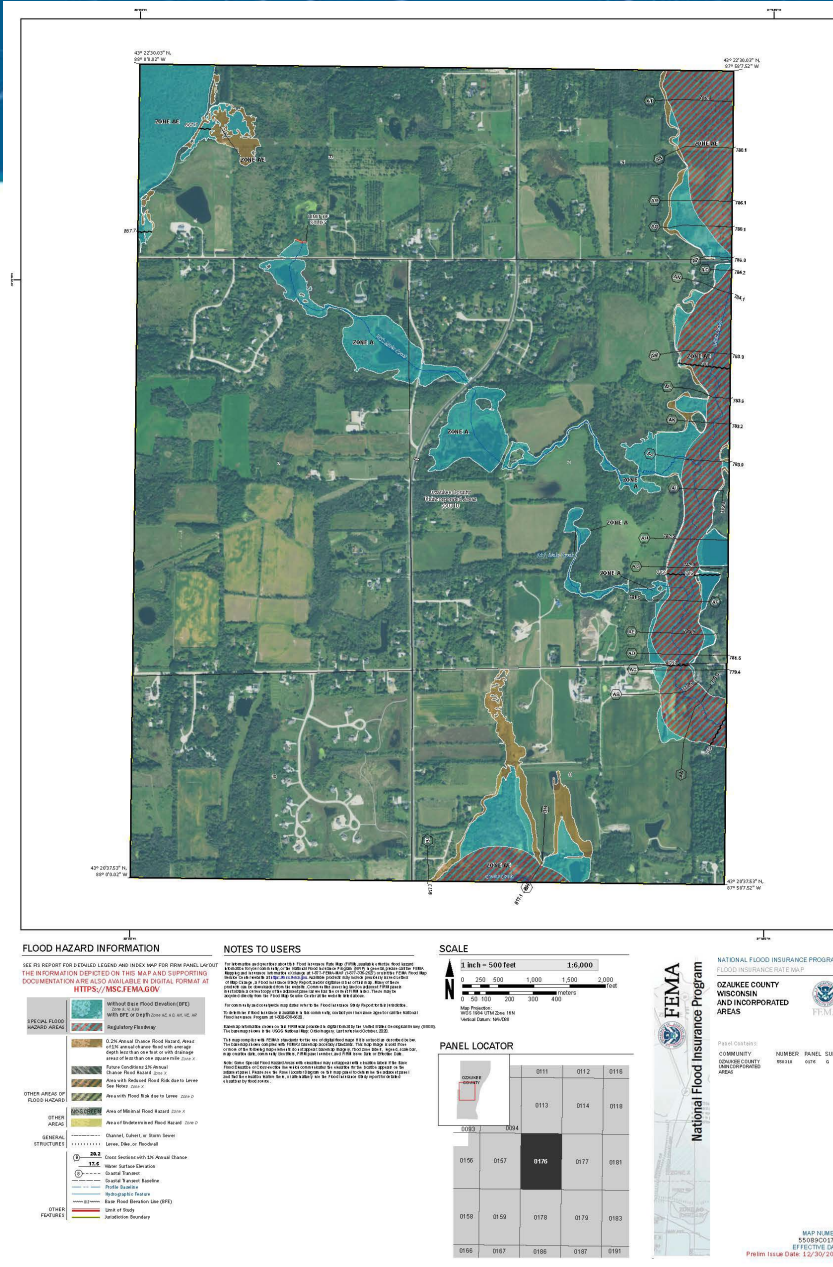
Studied Streams

- Updated engineering for approximate (Zone A) streams : ~326 miles
- Redelineations for (Zone AE) streams: ~9.5 miles



FEMA

Workmap Example



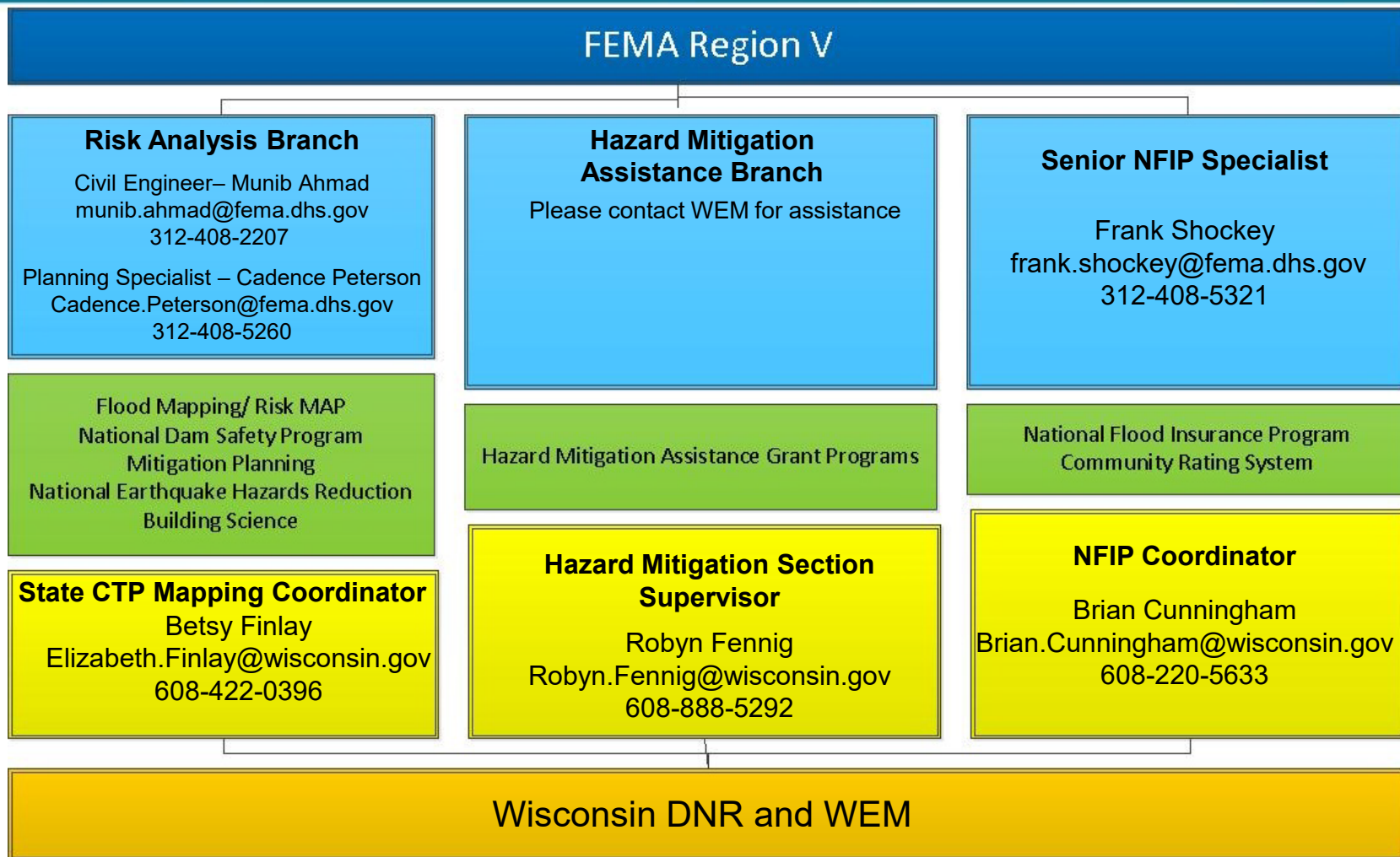
FEMA

RiskMAP
Increasing Resilience Together

Hazard Mitigation Planning Status

- **How much were you involved with developing your current plan?**
 - Price County: August 2020 update
- **Do you desire support with planning in the future?**
 - How FEMA, DNR and WEM can help
- **What kind of technical assistance or support would you benefit from?**

FEMA and State Contacts



FEMA

Discussion & Questions

- **Engineering Methods 30-day comment period**
 - 620 letters mailed 12/17/2021
- **Questions?**



FEMA