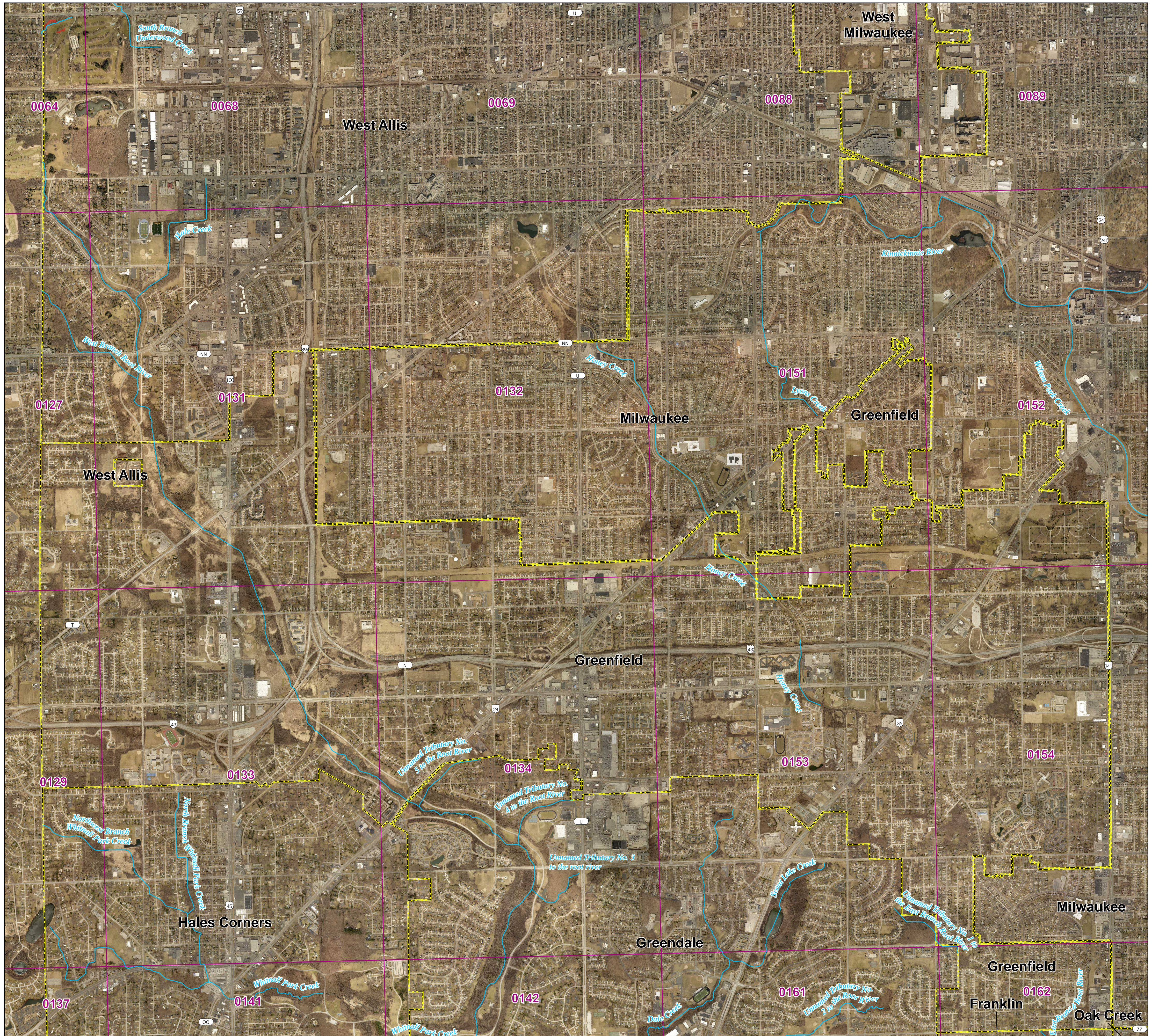


# Milwaukee County and incorporated areas Flood Storage Districts

T6N R21E  
Panel 5

Sources of Study: WDNR  
Effective Date: October 24, 2024  
Approved by: WDNR

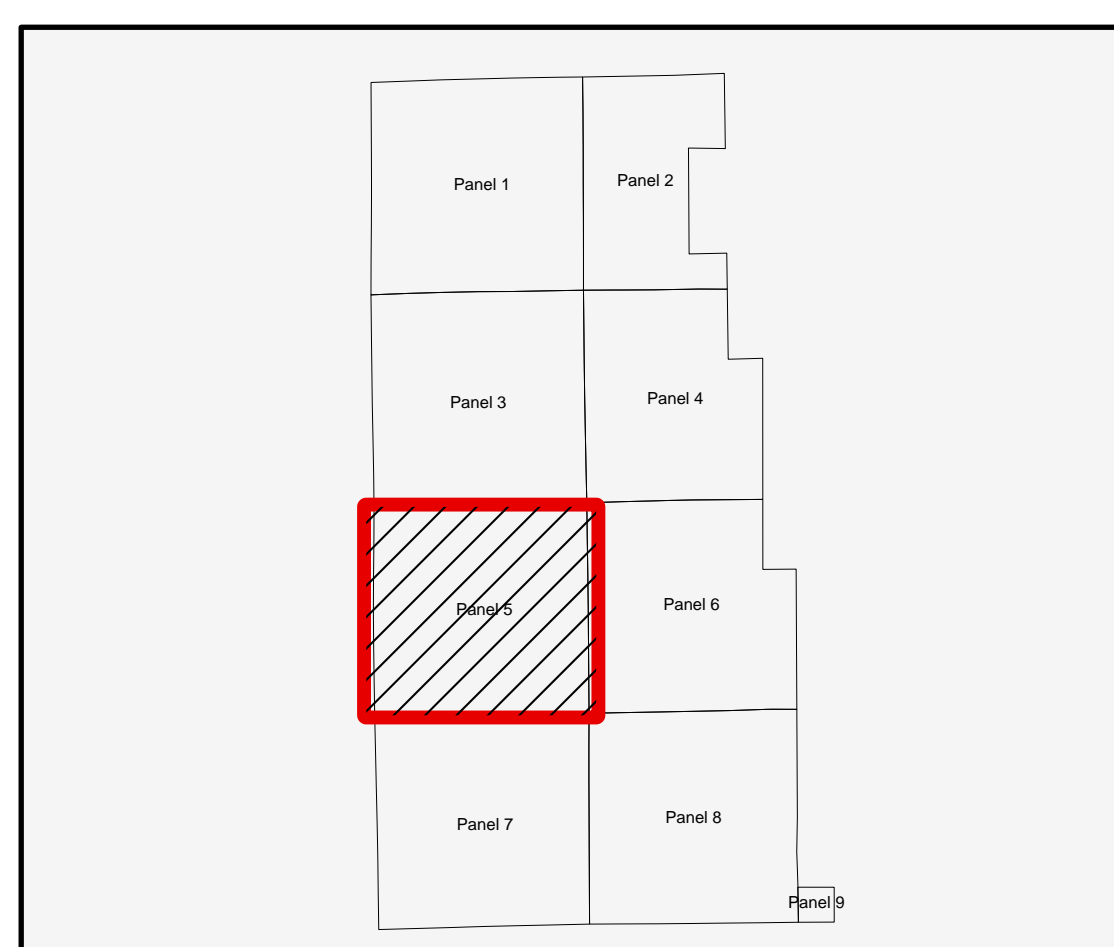


## LEGEND

- FIRM Panel
- Rivers/streams
- Flood Storage Districts
- Municipalities

0 1,250 2,500 5,000 Feet

1:18,000



Coordinate System: NAD 1983 HARN UTM 16

Aerial photography was acquired in the Spring of 2015 and was provided in digital format by the Wisconsin Regional Orthophotography Consortium (WROC).

Flood Storage Districts available for download at DNR's Surface Water Data Viewer: [dnr.wisconsin.gov/topic/SurfaceWater/swdv](http://dnr.wisconsin.gov/topic/SurfaceWater/swdv) (or go to [dnr.wi.gov](http://dnr.wi.gov) and search "SWDV")

