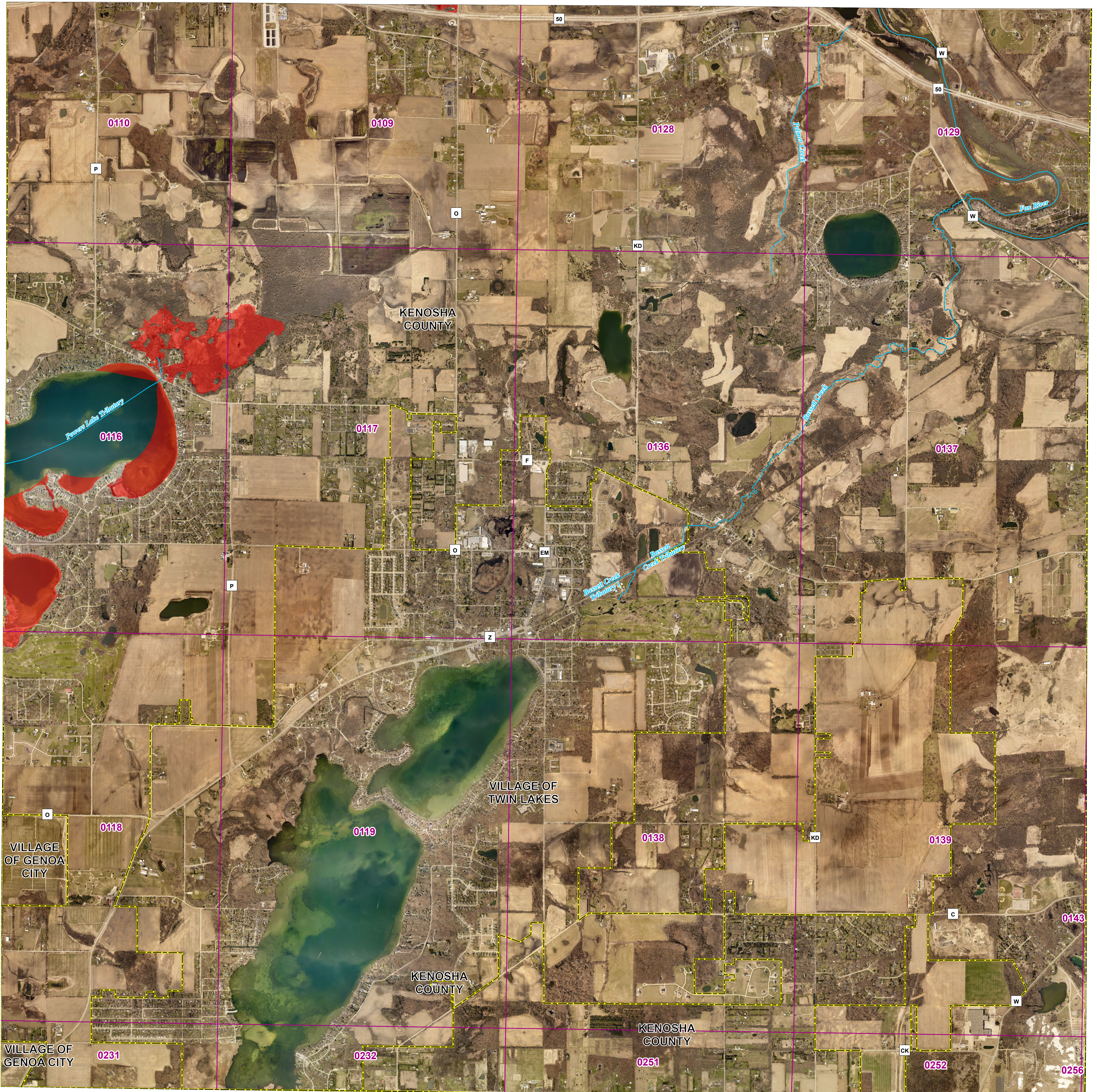


Kenosha County and incorporated areas Flood Storage Districts T1N R19E Panel 6

Sources of Study: WDNR
Effective date: April 11, 2024
Approved by: WDNR



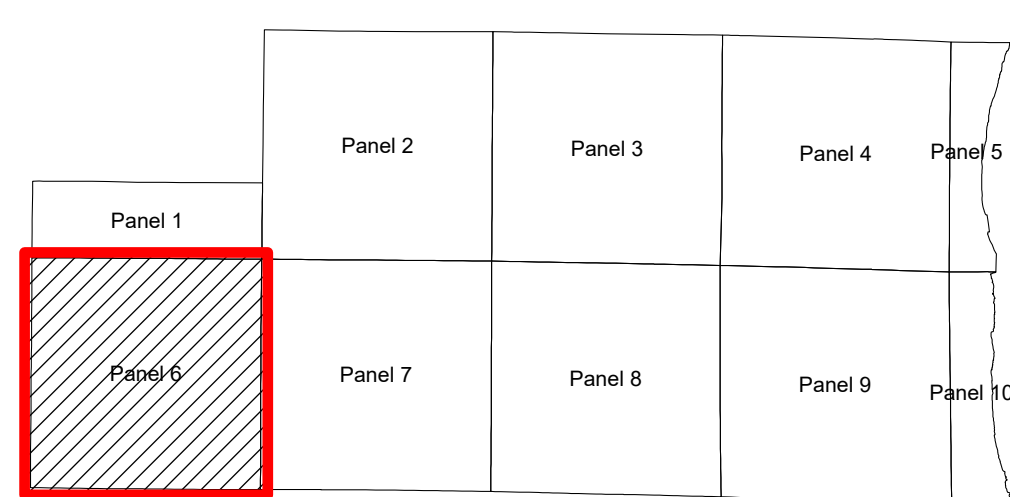
Legend

- DFIRM Panel
- Rivers/streams
- Flood Storage Districts
- Political Boundary

0 1,250 2,500 5,000 Feet



1:18,000



Coordinate System: NAD 1983 HARN UTM Zone 16

Aerial photography was acquired in the Spring of 2020 and was provided in digital format by the Southeastern Wisconsin Regional Planning Commission (SEWRPC).

Flood Storage Districts available for download at DNR's Surface Water Data Viewer: dnr.wisconsin.gov/topic/SurfaceWater/swdv (or go to dnr.wi.gov and search "SWDV")

