

Fond du Lac County

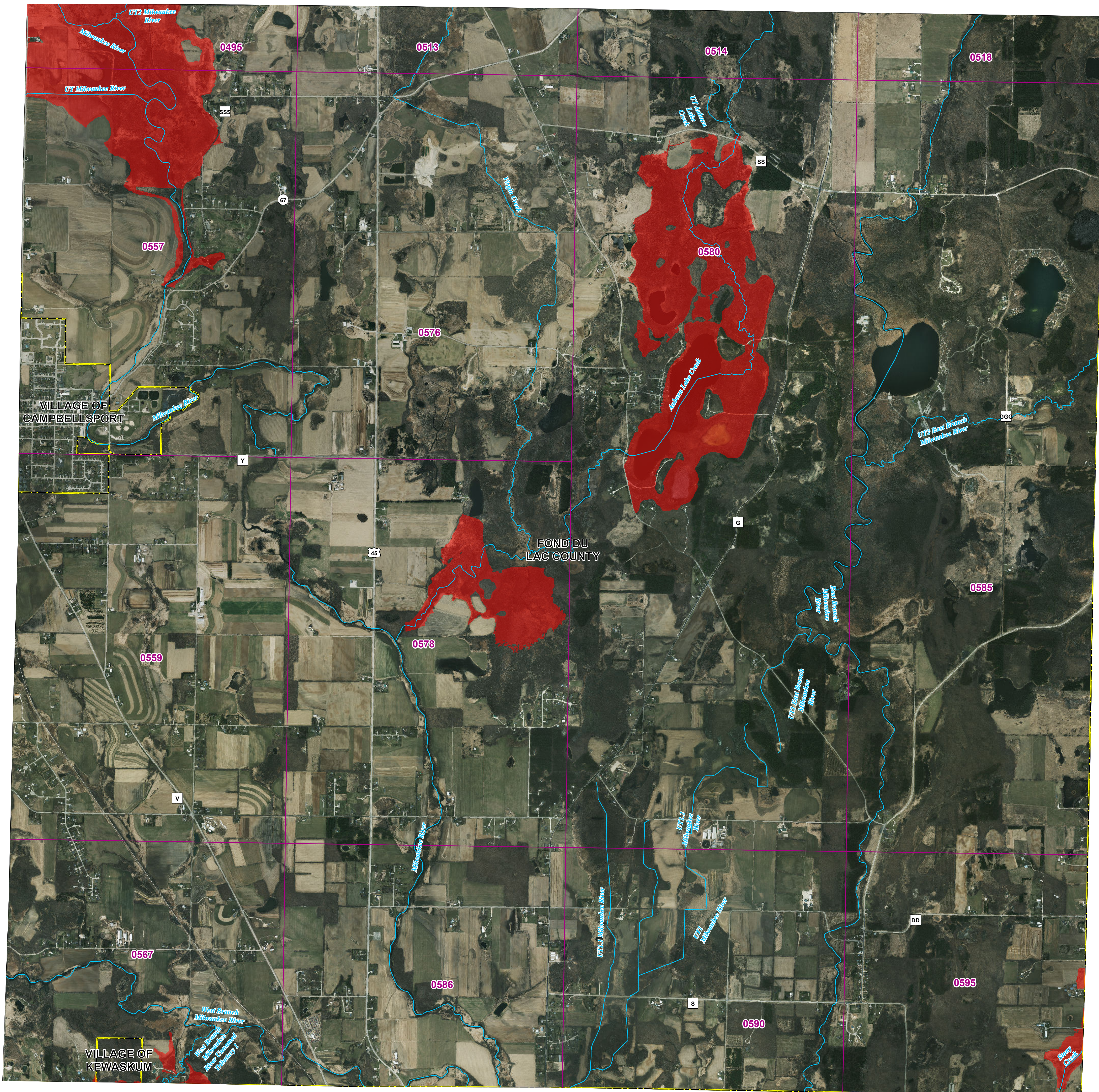
and incorporated areas

Flood Storage Districts

T13N R19E

Panel 22

Sources of Study: WDNR
 Effective date: December 20, 2024
 Approved by: WDNR

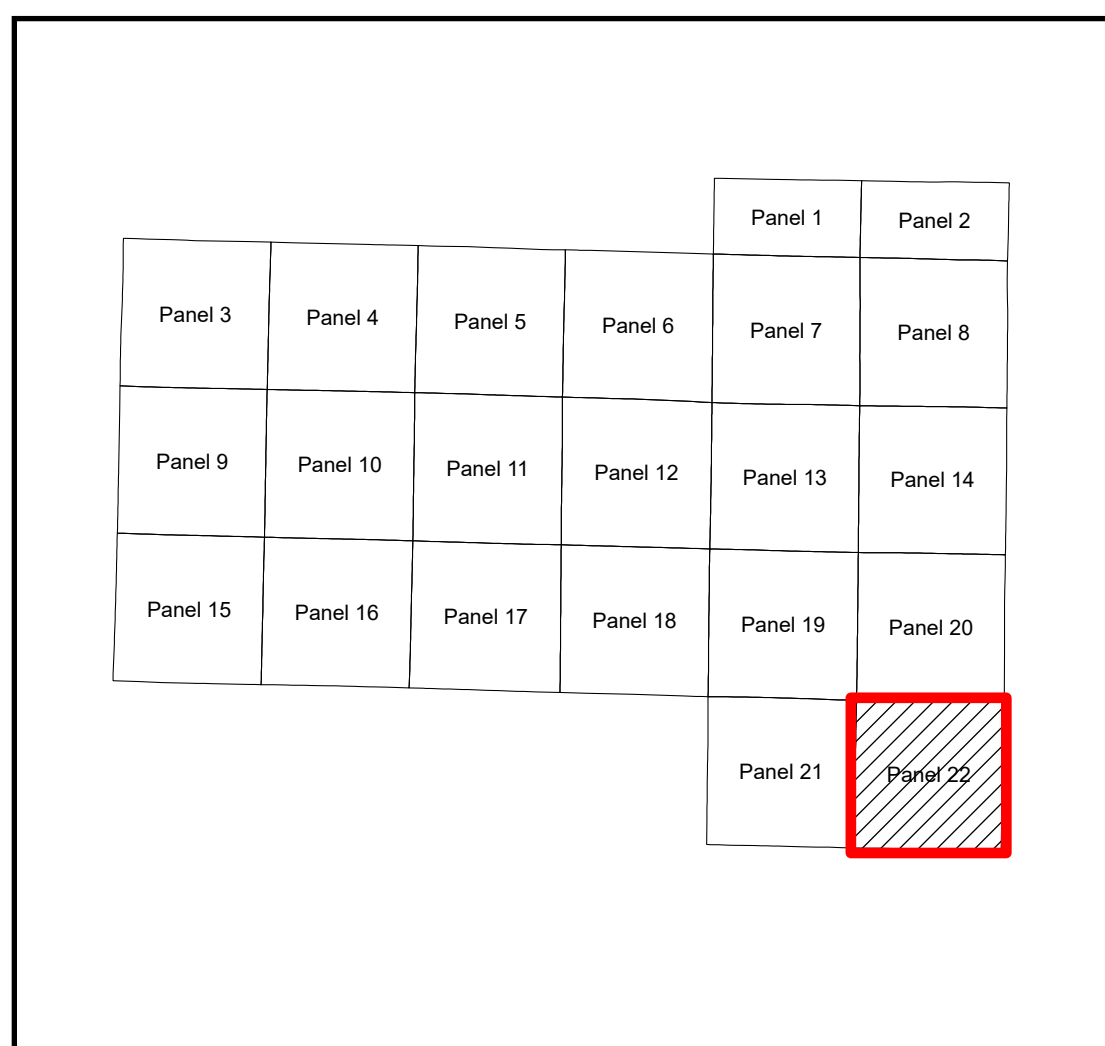


Legend

- DFIRM Panel
- Rivers/streams
- Flood Storage Districts
- Political Boundary

0 1,250 2,500 5,000 Feet

1:18,000



Coordinate System: NAD 1983 HARN UTM Zone 16

Aerial photography was acquired in the Spring of 2020 and was provided in digital format by the Wisconsin Regional Orthophoto Consortium (WROC).

Flood Storage Districts available for viewing at DNR's Surface Water Data Viewer: dnr.wisconsin.gov/topic/SurfaceWater/swdv (or go to dnr.wi.gov and search "SWDV")

