

# Fond du Lac County

and incorporated areas

## Flood Storage Districts

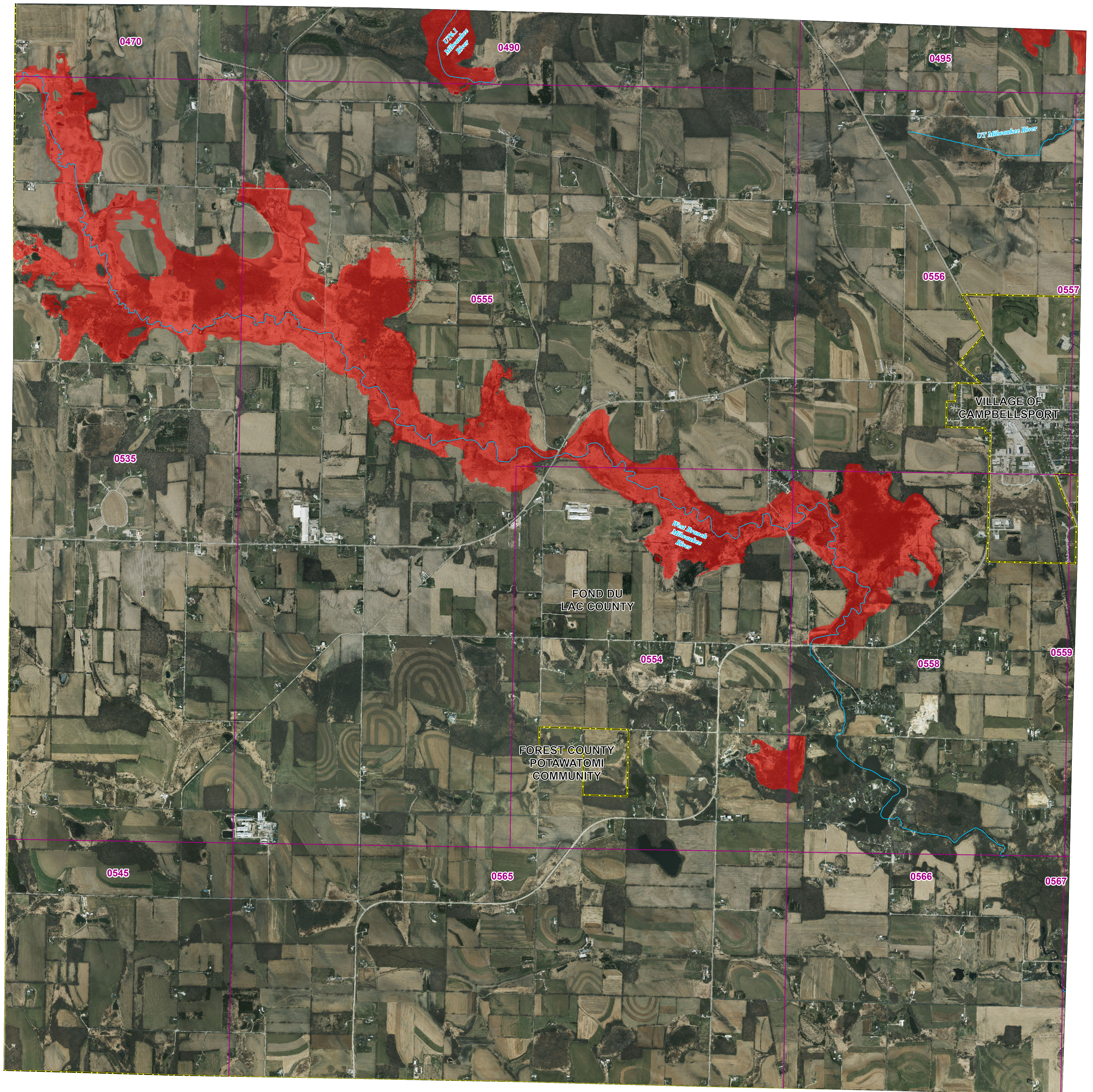
T13N R18E

Panel 21

Sources of Study: WDNR Effective

date: December 20, 2024

Approved by: WDNR



### Legend

- DFIRM Panel
- Rivers/streams
- Flood Storage Districts
- Political Boundary

0 1,250 2,500 5,000 Feet



1:18,000

|          |          |          |          |          |          |
|----------|----------|----------|----------|----------|----------|
|          |          |          |          | Panel 1  | Panel 2  |
| Panel 3  | Panel 4  | Panel 5  | Panel 6  | Panel 7  | Panel 8  |
| Panel 9  | Panel 10 | Panel 11 | Panel 12 | Panel 13 | Panel 14 |
| Panel 15 | Panel 16 | Panel 17 | Panel 18 | Panel 19 | Panel 20 |
|          |          |          |          | Panel 21 | Panel 22 |

Coordinate System: NAD 1983 HARN UTM Zone 16

Aerial photography was acquired in the Spring of 2020 and was provided in digital format by the Wisconsin Regional Orthophoto Consortium (WROC).

Flood Storage Districts available for viewing at DNR's Surface Water Data Viewer: [dnr.wisconsin.gov/topic/SurfaceWater/swdv](http://dnr.wisconsin.gov/topic/SurfaceWater/swdv) (or go to [dnr.wi.gov](http://dnr.wi.gov) and search "SWDV")

