

# Fond du Lac County

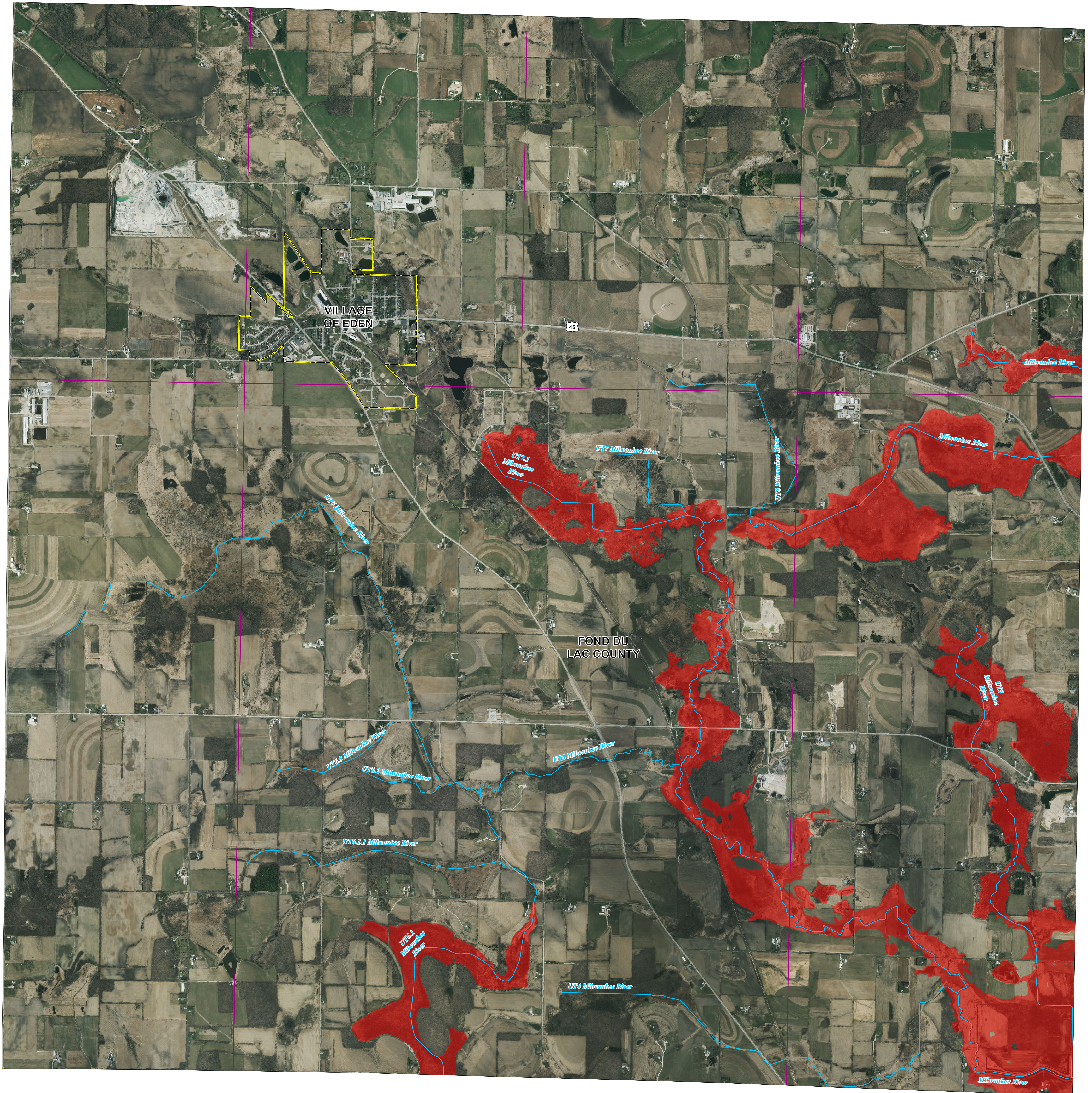
and incorporated areas

## Flood Storage Districts

T14N R18E

Panel 19

Sources of Study: WDNR  
 Effective date: December 20, 2024  
 Approved by: WDNR

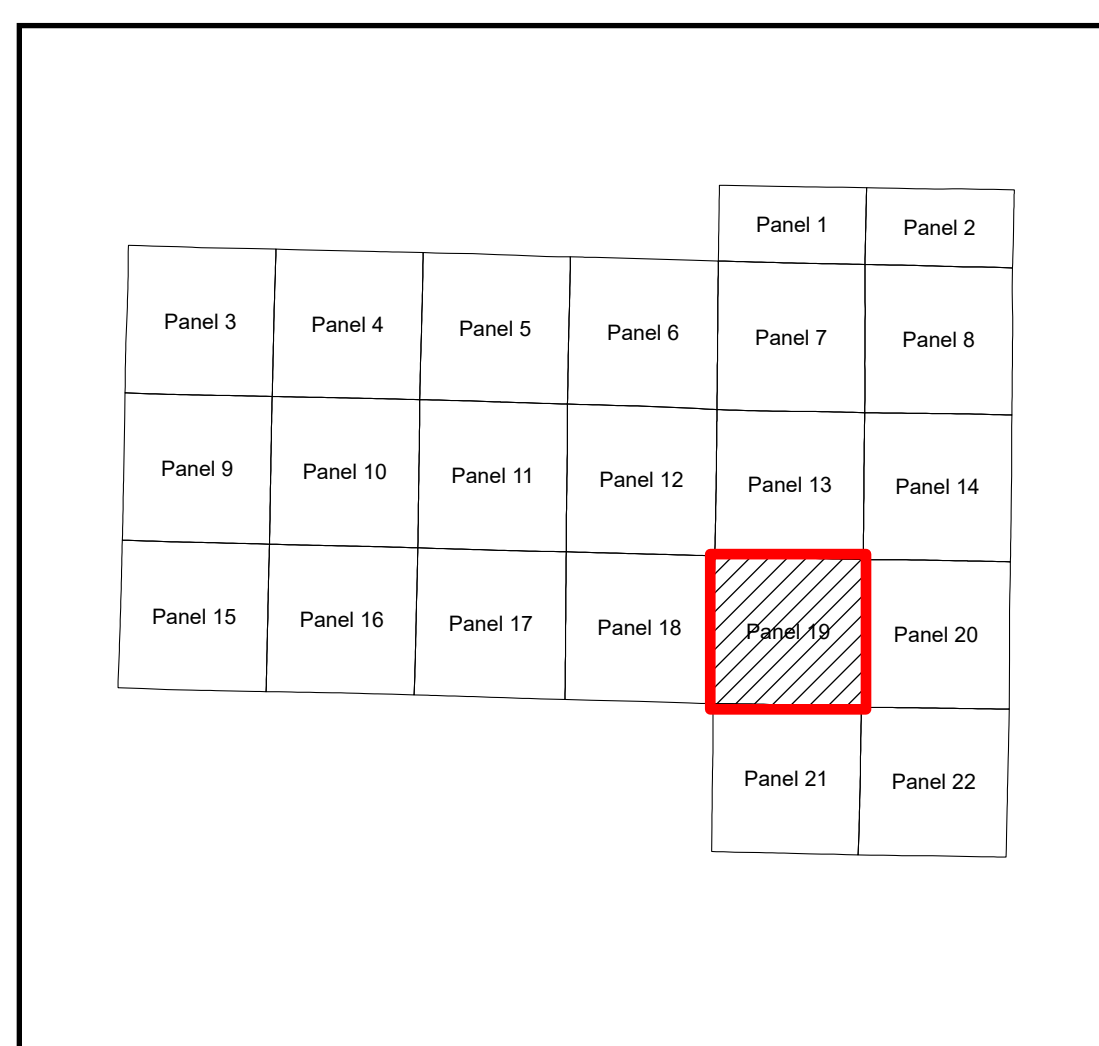


**Legend**

- DFIRM Panel
- Rivers/streams
- Flood Storage Districts
- Political Boundary

0 1,250 2,500 5,000 Feet

1:18,000



Coordinate System: NAD 1983 HARN UTM Zone 16

Aerial photography was acquired in the Spring of 2020 and was provided in digital format by the Wisconsin Regional Orthophoto Consortium (WROC).

Flood Storage Districts available for viewing at DNR's Surface Water Data Viewer: [dnr.wisconsin.gov/topic/SurfaceWater/swdv](http://dnr.wisconsin.gov/topic/SurfaceWater/swdv) (or go to [dnr.wi.gov](http://dnr.wi.gov) and search "SWDV")

