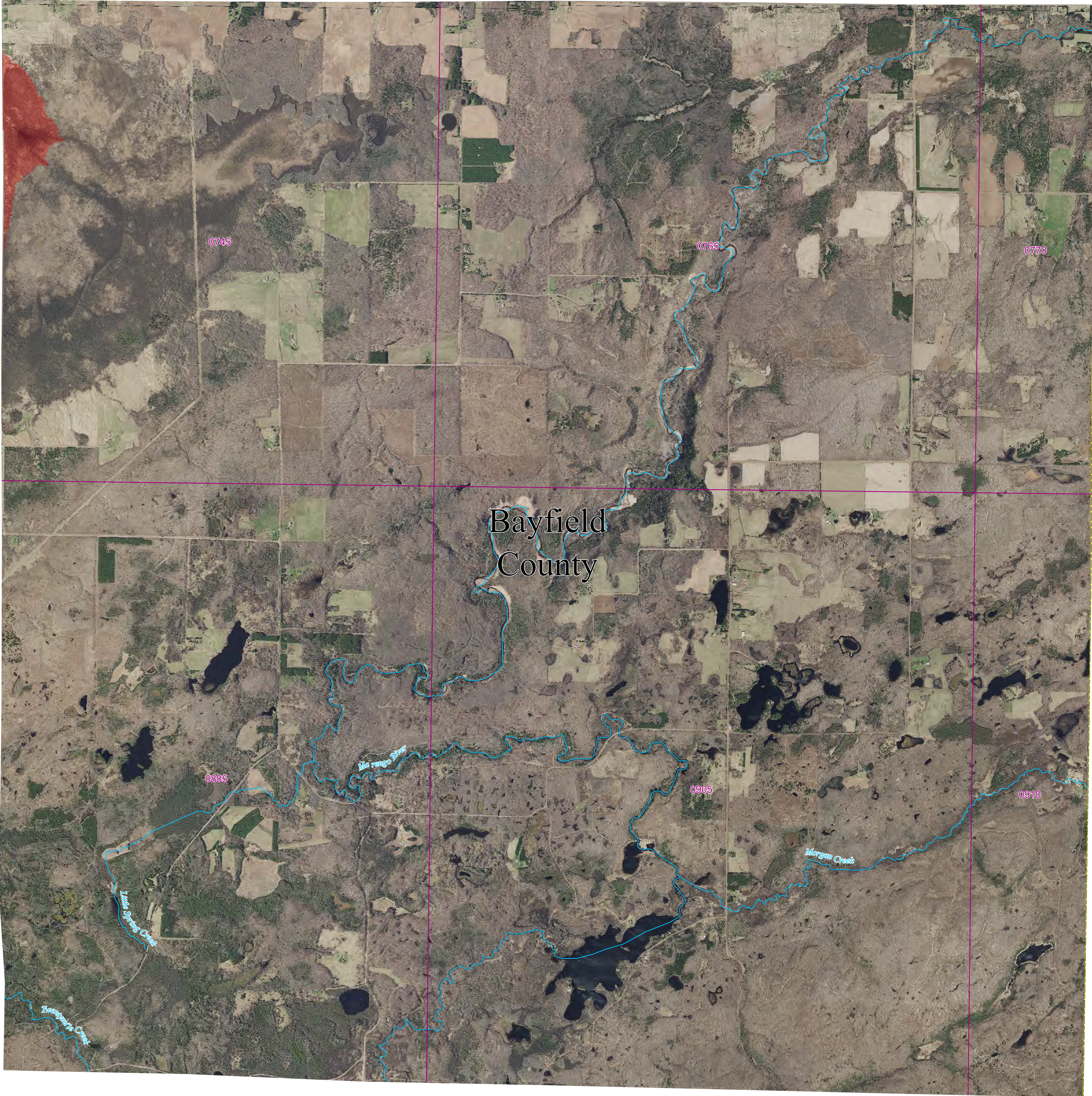


# Bayfield County and incorporated areas Flood Storage Districts

T45N R5W  
Panel 42

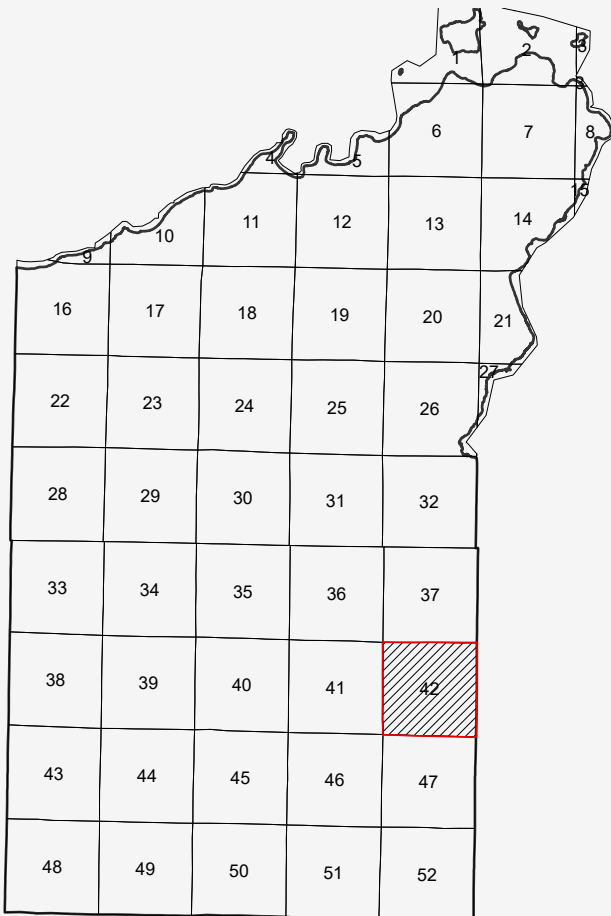
Sources of Study: WDNR  
Effective Date: Month Day, TBD  
Approved by: WDNR



## LEGEND

- Flood Storage Districts
- Panels
- Political Boundary
- Rivers/streams

0 1,250 2,500 5,000 Feet  
1:18,000



Coordinate System: NAD 1983 HARN UTM Zone 15

Aerial photography was acquired in the Spring of 2020 and was provided in digital format by the Wisconsin Regional Orthophotography Consortium (WROC).

Flood Storage Districts available for download after the Letter of Final Determination (LFD) at DNR's Surface Water Data Viewer: [dnr.wisconsin.gov/topic/SurfaceWater/swdv](https://dnr.wisconsin.gov/topic/SurfaceWater/swdv) (or go to [dnr.wi.gov](https://dnr.wi.gov) and search "SWDV")

