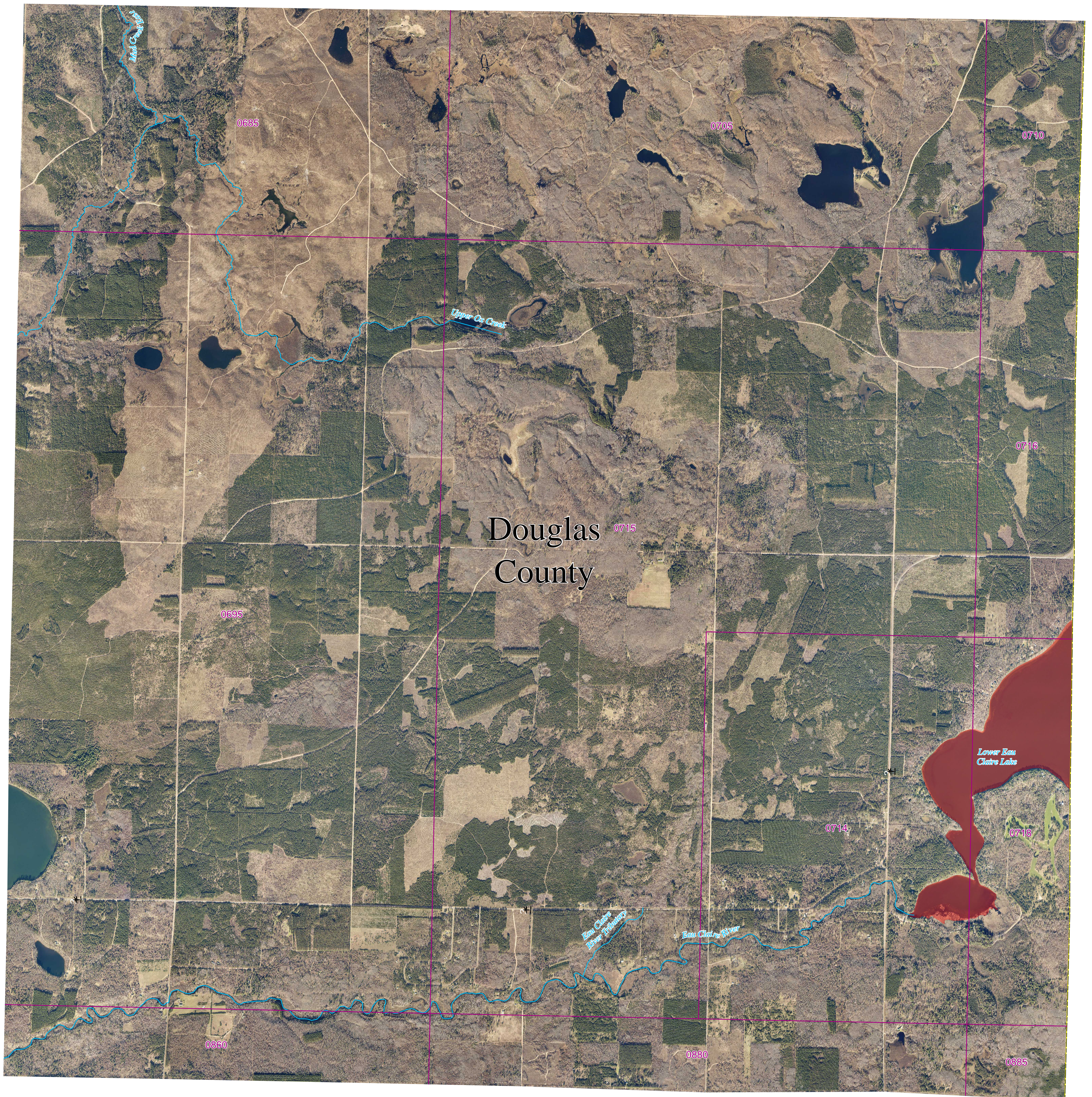


# Douglas County and incorporated areas Flood Storage Districts

T44N R10W  
Panel 36

Sources of Study: WDNR  
Effective Date: TBD  
Approved by: WDNR

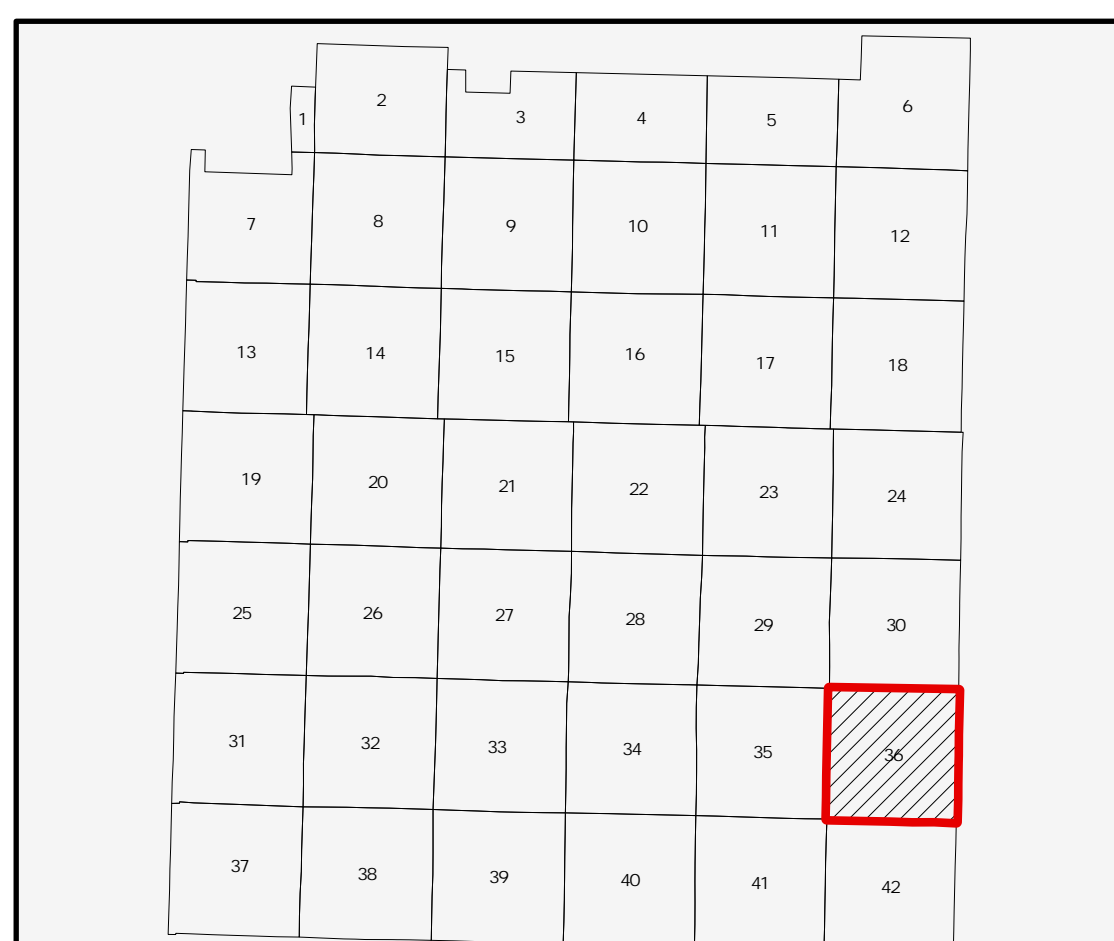


## LEGEND

- Flood Storage Districts
  - Panels
  - Rivers/streams
- POLITICAL AREAS
- Political Boundary
  - Municipalities

0 1,250 2,500 5,000 Feet

1:18,000



Coordinate System: NAD 1983 HARN UTM Zone 15

Aerial photography was acquired in the Spring of 2018 and was provided in digital format by the Wisconsin Regional Orthophotography Consortium (WROC).

Flood Storage Districts available for download after the Letter of Final Determination (LFD) at DNR's Surface Water Data Viewer: [dnr.wisconsin.gov/topic/SurfaceWater/swdv](http://dnr.wisconsin.gov/topic/SurfaceWater/swdv) (or go to [dnr.wi.gov](http://dnr.wi.gov) and search "SWDV")

