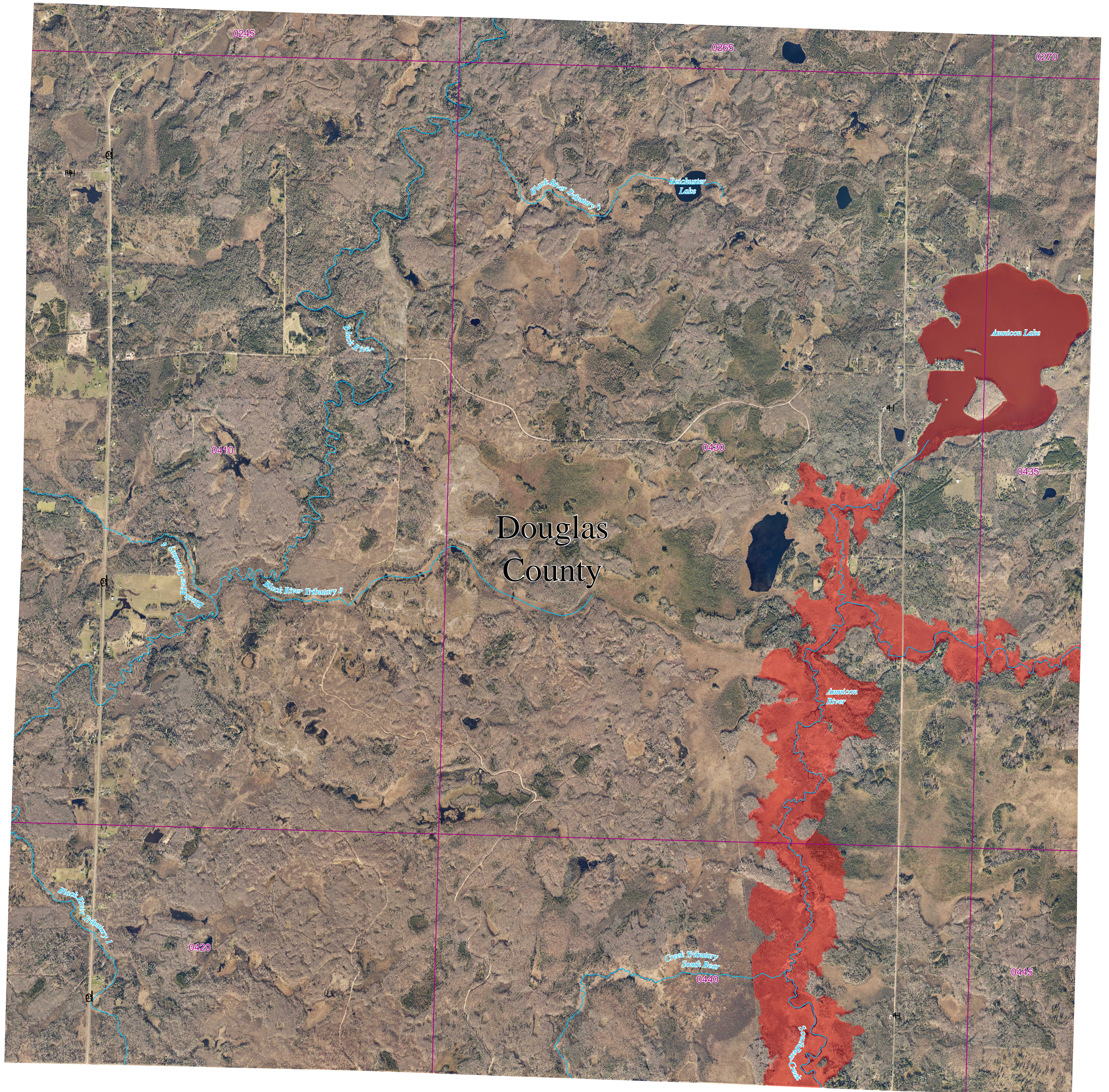


Douglas County and incorporated areas Flood Storage Districts

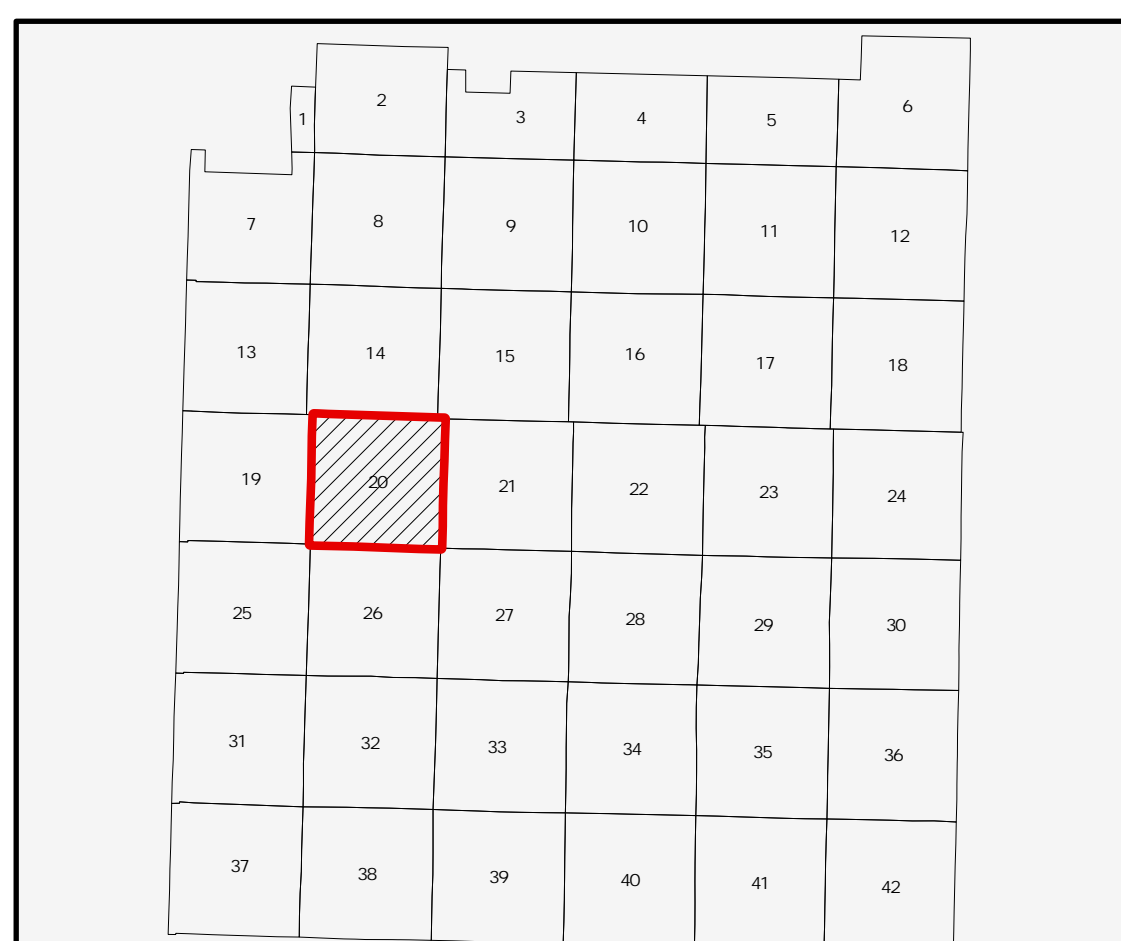
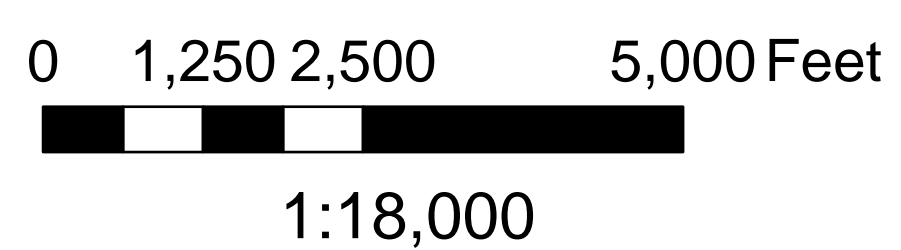
T46N R14W
Panel 20

Sources of Study: WDNR
Effective Date: TBD
Approved by: WDNR



LEGEND

- Flood Storage Districts
 - Panels
 - Rivers/streams
- POLITICAL AREAS
- Political Boundary
 - Municipalities



Coordinate System: NAD 1983 HARN UTM Zone 15

Aerial photography was acquired in the Spring of 2018 and was provided in digital format by the Wisconsin Regional Orthophotography Consortium (WROC).

Flood Storage Districts available for download after the Letter of Final Determination (LFD) at DNR's Surface Water Data Viewer: dnr.wisconsin.gov/topic/SurfaceWater/swdv (or go to dnr.wi.gov and search "SWDV")

