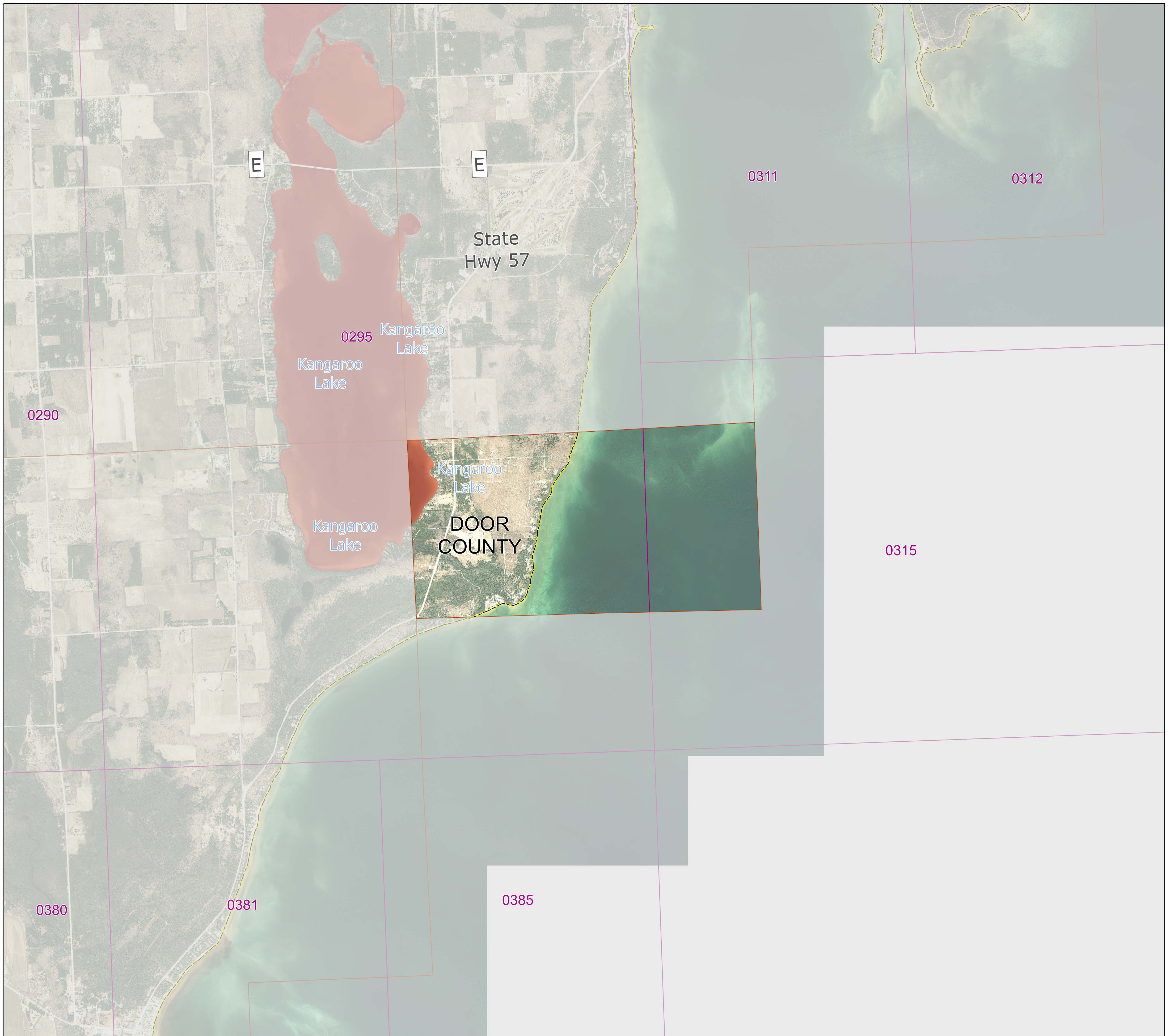


Door County and incorporated areas Flood Storage Districts

T29N R28E
Panel 18

Sources of Study: WDNR
Effective Date: May 8, 2024
Approved by: WDNR



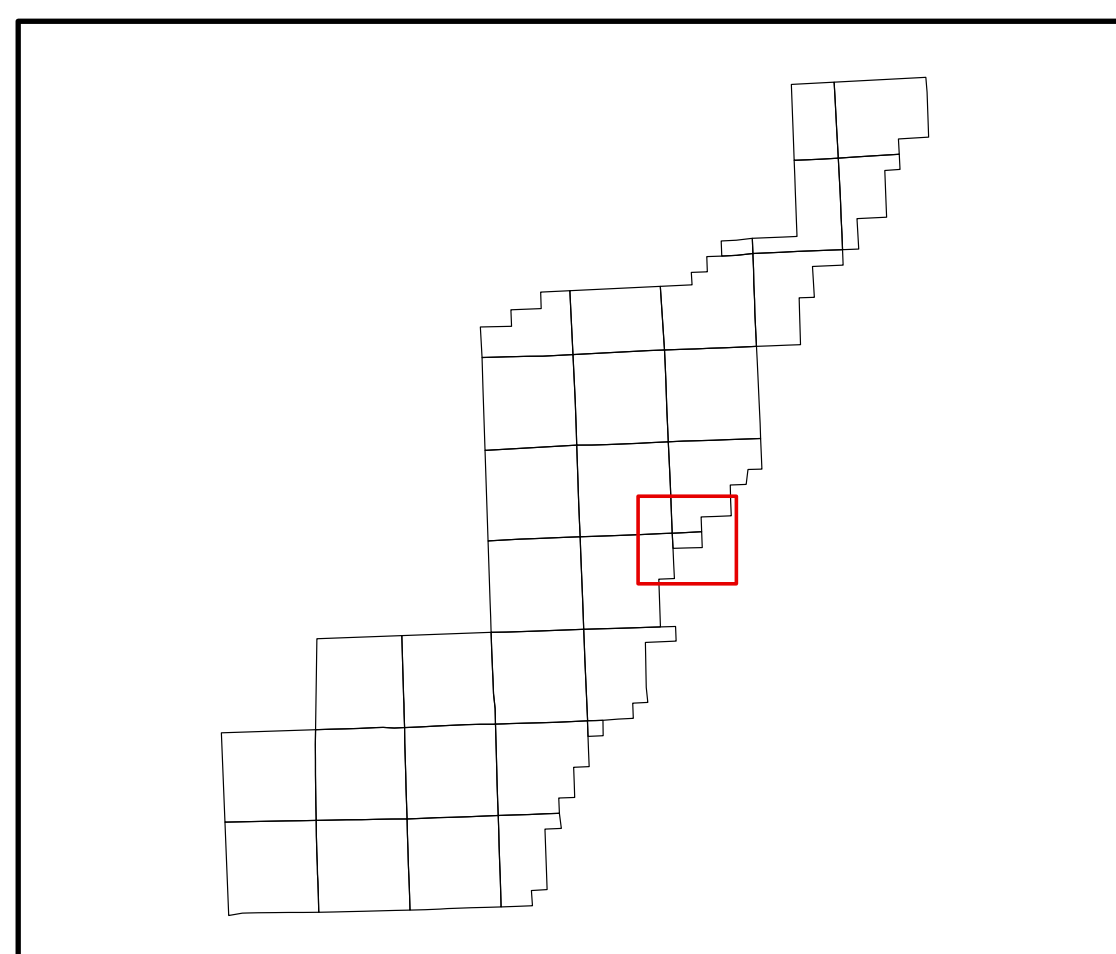
LEGEND

- Flood Storage Districts
- FIRM Panel
- Municipalities
- Door County
- Panels
- Door_TR_PLSS_Mask_18c_Erase

0 1,250 2,500 5,000 Feet



1:18,000



Coordinate System: NAD 1983 HARN UTM

Aerial photography was acquired in the Spring of 2019 and was provided in digital format by the Wisconsin Regional Orthophotography Consortium (WROC).

Flood Storage Districts available for download at DNR's Surface Water Data Viewer: dnr.wisconsin.gov/topic/SurfaceWater/swdv (or go to dnr.wi.gov and search "SWDV")

