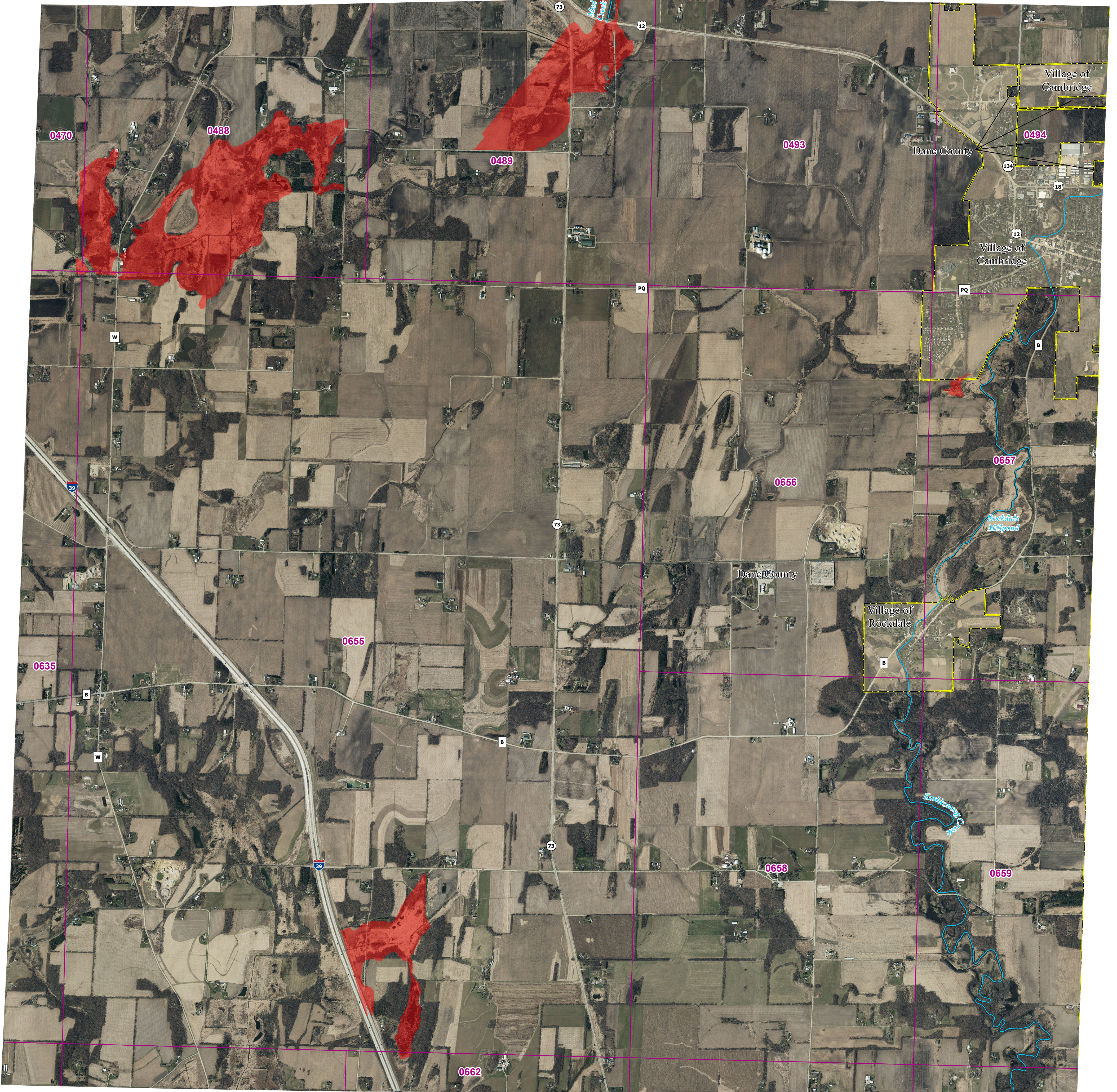


Dane County and incorporated areas Flood Storage Districts

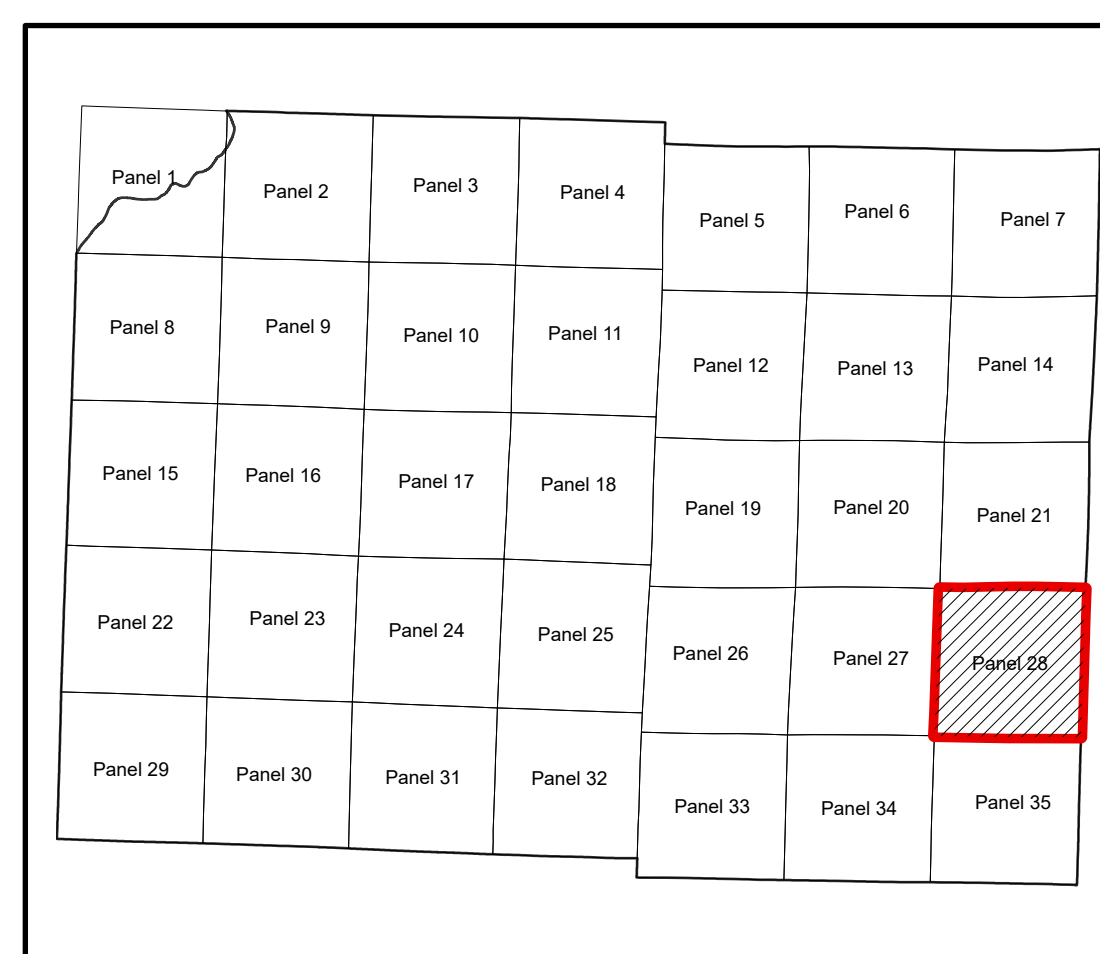
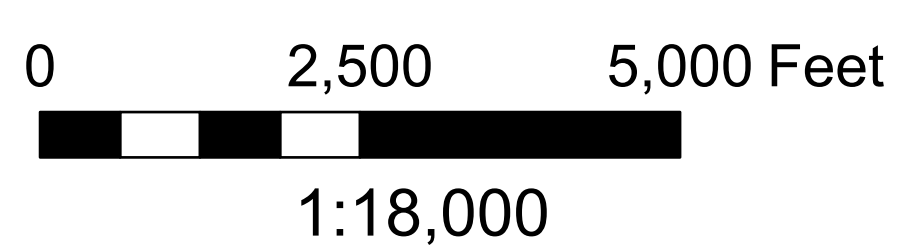
T6N R12E
Panel 28

Sources of Study: WDNR
Effective Date: April 9, 2025
Approved by: WDNR



LEGEND

- DFIRM Panels
- Rivers/Streams
- Dane Co Boundary
- Municipalities
- Flood Storage Districts



Coordinate System: NAD 1983 HARN UTM Zone 16

Aerial photography was acquired in the Spring of 2020 and was provided in digital format by the Wisconsin Regional Orthophotography Consortium (WROC).

Flood Storage Districts available for download at DNR's Surface Water Data Viewer: dnr.wisconsin.gov/topic/SurfaceWater/swdv (or go to dnr.wi.gov and search "SWDV")

