



# WISCONSIN DEPARTMENT OF NATURAL RESOURCES

## Fisheries Information Sheet

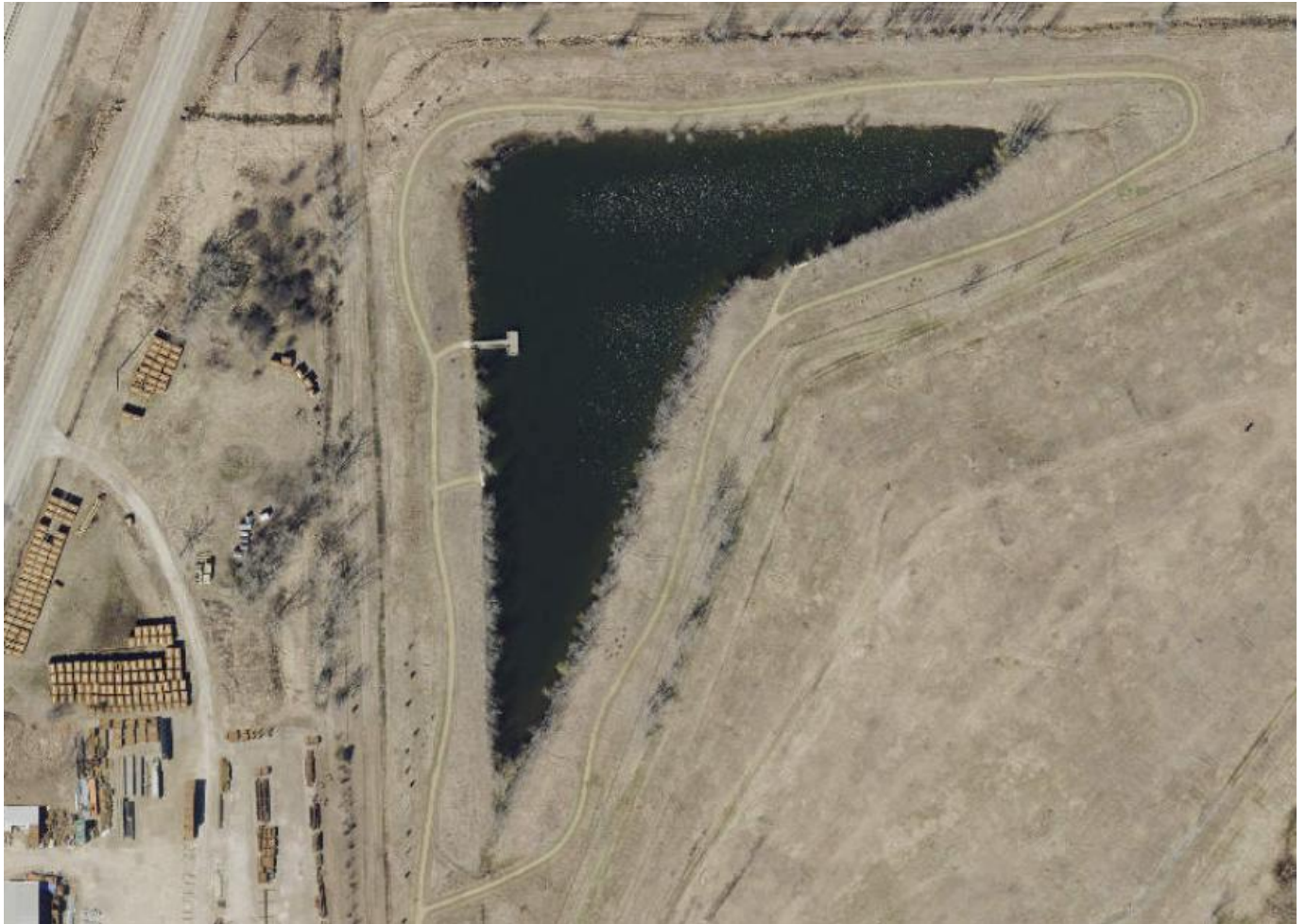
**LAKE:** Ken Robl Pond

**COUNTY:** Winnebago

**YEAR:** 2025

### Introduction

Ken Robl Pond is a 4.1-acre pond located at Ken Robl Conservation Park on the north side of Oshkosh. It has a walking trail surrounding the entire pond and a fishing pier on the west side of the pond. The area is managed by Winnebago County Parks Department and the pond is posted as catch and release only. Sampling was conducted on June 5, 2025. The transect around the shoreline of the pond was 0.5 miles. Primary objectives of this survey are to assess species composition, relative abundance, and size structure.



### BLUEGILL X GREEN SUNFISH

There were no bluegills captured during sampling, however there were 5 bluegill x green sunfish hybrids captured ranging from 7.9-9.3 inches with an average size of 8.4 inches.

# Captured Per Mile = 10	
(PSD) Quality Size $\geq 6"$	100
(PSD) Preferred Size $\geq 8"$	80



Image 1. Large bluegill/green sunfish hybrid

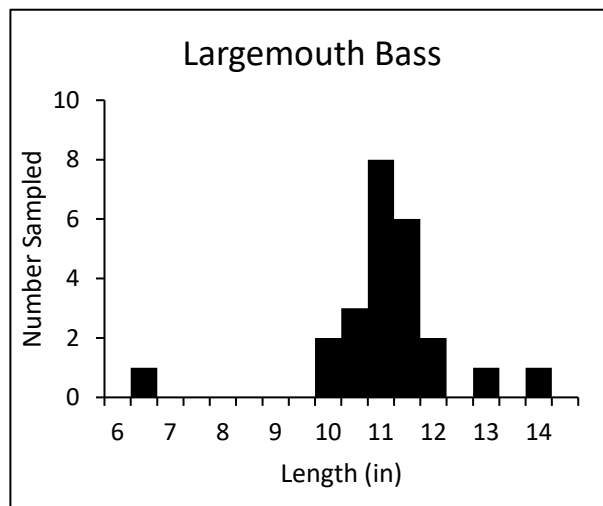


Figure 1. Length distribution of largemouth bass.

### LARGEMOUTH BASS



There were 24 largemouth bass captured ranging from 6.8-14.1 inches with an average size of 11.3 inches.

# Captured Per Mile = 48	
(PSD) Quality Size $\geq 12"$	16
(PSD) Preferred Size $\geq 15"$	0

## PUMPKINSEED



There were 10 pumpkinseed captured ranging from 3.2-8.3 inches with an average of 6.6 inches.

# Captured Per Mile = 20	
(PSD) Quality Size $\geq 6"$	80
(PSD) Preferred Size $\geq 8"$	10



Image 2. Pictured left to right, bluegill x green sunfish hybrid, pumpkinseed, green sunfish.

## Summary

Panfish species in Ken Robl Park Pond were found in moderate abundance with high size structure. PSD-quality values for bluegill x green sunfish hybrids and pumpkinseed were 100 and 80, respectively. There were only 4 panfish captured under 6-inches, indicating that natural reproduction is limited. Hybrids species can occur naturally but are also commonly stocked. The source of the hybrids present in the pond is unknown. Hybrids have limited reproductive potential and supplemental stocking of panfish species may aid in the continuation/enhancement of panfish angling opportunities. Other species captured were 4 black bullheads ranging from 10.6-11.2 inches, 1 green sunfish measuring 7.9 inches, and 4 green sunfish x pumpkinseed hybrids captured ranging from 5.0-5.1 inches.

## Acknowledgements

For answers to questions about fisheries management activities on Ken Robl Pond, contact:

### Jason Kohls

Wisconsin Department of Natural Resources  
625 E. County Rd Y, Suite 700  
Oshkosh, WI 54901  
920-420-9943  
[Jason.kohls@wisconsin.gov](mailto:Jason.kohls@wisconsin.gov)