

Wisconsin Department of Natural Resources 2025 White River Trout Survey Summary

Marquette and Waushara Counties

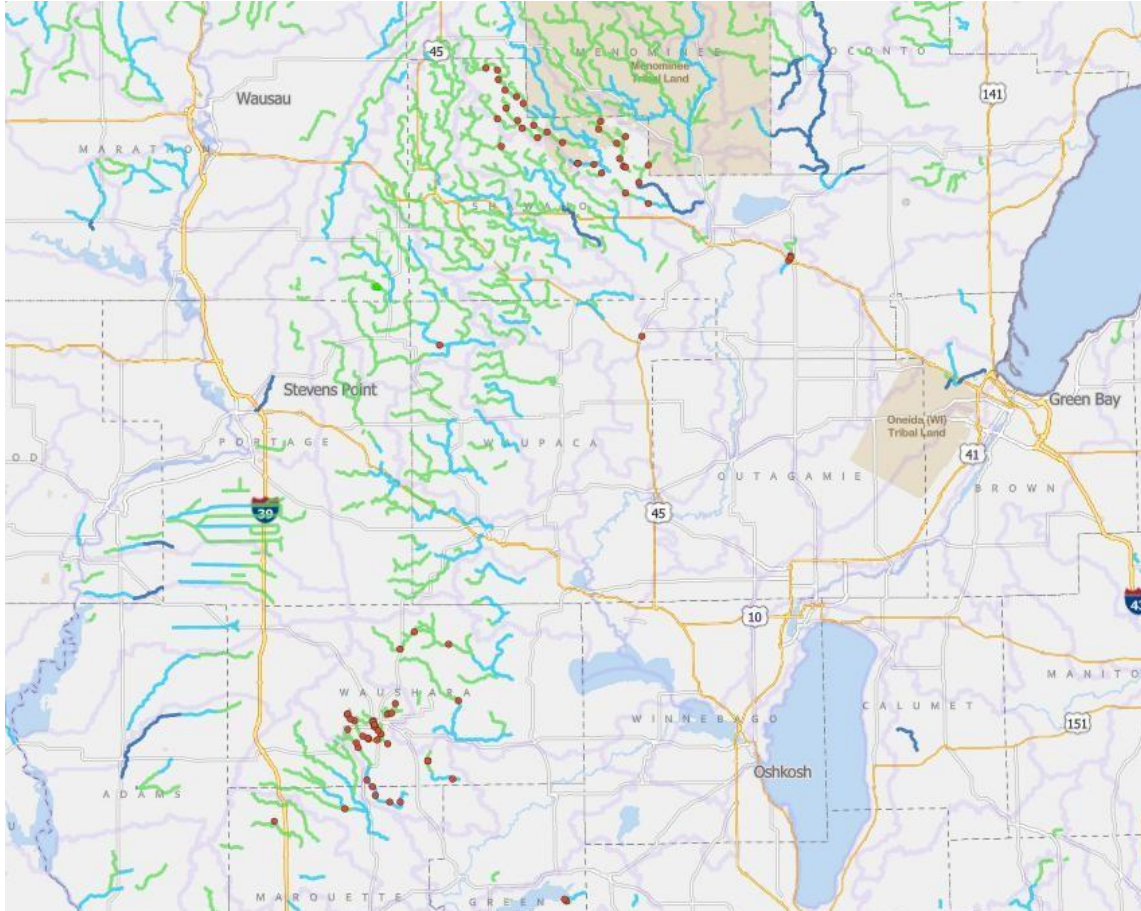


Photo Credit: WDNR Surface Water Data Viewer / Kudingo



Trevor Hoheisel – LTE Fisheries Technician
427 East Tower Dr. Suite 100, Wautoma, WI 54982
email: Trevor.Hoheisel@wisconsin.gov

05/05/2026

Executive Summary

In 2025, the Wisconsin Department of Natural Resources (DNR) conducted electrofishing surveys on wadable streams located in Marquette and Waushara counties to provide insight and direction for the future management of these waters. Primary sampling objectives of these surveys were to characterize relative abundance and size structure for all trout and overall ecological integrity through an index of biotic integrity (IBI) based on all fish species present in the sampled locations. All streams are sampled according to the DNR's wadable streams monitoring protocols. Metrics used to describe fish populations include catch per unit effort (CPUE) and length frequency distribution. The following report is a summary of trout metrics for all streams and sites surveyed in 2025. The tables also show comparisons to previous years survey results.

Gamefish Species Sampled

Brook trout (*Salvelinus fontinalis*) is the only stream dwelling trout native to Wisconsin, found predominately in central and northern Wisconsin. Brook trout reside in cold headwater streams and spawn by building a nest called a redd in the fall of the year around November.

Brown trout (*Salmo trutta*) are a predatory species found throughout Wisconsin, not native to the United States they were introduced in 1883. Typically, brown trout spawn in gravel, forming nests called redds, from October to December.

Rainbow Trout (*Salmo gairdneri*) has been introduced throughout Wisconsin, found primarily in stocking locations throughout the state to provide a fishing opportunity. However, there are a few streams in southern areas of the Upper Fox and Lower Wolf work unit where rainbow trout naturally reproduce.

Methods

Sampling Schedule

Trend survey sites are sampled biannually in Marquette and Waushara Counties. While rotation sites are sampled on a rotational frequency by watershed and will vary by each field office.

Gear

All sampling sites are electrofished with either a towed barge or backpack electrofishing unit depending on the depth and width of a stream. Both gear types were used for the surveys listed in this report.

Site Distances

Sampling distance is at least 35 times the mean stream width or a minimum of 330 feet (100 meters), whichever is greater.

Data Collected

All gamefish are identified as a species, measured for length and examined for fin clips. In at least one survey site per stream, all fish species are collected and counted. If multiple sites are designated for a stream, only one site needs to be sampled for all fish.

Metric Descriptions

Catch per unit effort (CPUE) is a method of quantifying fish population relative abundance. For all trout surveys, we typically quantify CPUE as the number of a given size class of trout captured per mile of stream. CPUE indexes are compared to other trout streams throughout Wisconsin by what percentile (PCTL) they fall in. For example, if a CPUE is in the 90th percentile, it is higher than 90% of the other CPUEs in the state. CPUE percentiles can also be used to categorize trout abundance as low density (<33rd percentile), moderate density (33rd - 66th percentile), high density (66th - 90th percentile) and very high density (>90th percentile).

Length frequency distribution is a graphical representation of the number or percentage of fish captured by half inch or one inch size intervals.

Index of Biotic Integrity (IBI) is a rating of environmental quality based on the fish assemblage. Scores of 90 - 100 indicate excellent stream quality, while scores less than 30 indicate poor stream quality. Our analysis utilizes the IBI for Wisconsin coldwater streams. Coldwater streams in Wisconsin are those in which the maximum daily mean water temperature is usually <22°C (71.6°F). A coolwater stream IBI may also be used when a stream doesn't fit the temperature criteria for a coldwater stream.

Survey Effort

We would like to thank Eli Jorgenson, Kyle Kossel, Jim Taylor, Zach Nemitz-Myer, Kyle Siebers, Max Scodius, Trevor Hoheisel, Paige Kudingo, Elliot Hoffman and Scott Bunde who were the primary crew members responsible for daily stream survey work and data entry/analysis. There were also other staff and volunteers, too numerous to list, who helped to complete these surveys throughout the summer. Their assistance was greatly appreciated.

Table 1. Site information from streams surveyed by the Upper Fox work unit in 2025

Stream Name	County	Survey Type	Site Location	Survey Dates	Water Temp. (°F)	Site Length (feet)
Bird Creek	Waushara	Rotational	HWY 21	7/21/2025	51	800
Bird Creek	Waushara	Rotational	HWY 22	7/29/2025	56	330
Bird Creek	Waushara	Rotational	River Road	7/21/2025	53	1500
Bird Creek	Waushara	Rotational	16th Avenue	7/23/2025	57	330
Bowers Creek	Waushara	Rotational	CTH C	7/16/2025	52	330
Bowers Creek	Waushara	Rotational	River Road	7/23/2025	50	330
Chaffee Creek	Marquette	Trend	CTH Y	8/5/2025	52	4000
Lunch Creek	Waushara	Rotational	Czech Court	7/10/2025	52	428
Lunch Creek	Waushara	Rotational	Dakota Avenue	7/31/2025	58	476
Lunch Creek	Marquette	Rotational	Dakota Lane	7/31/2025	54	560
Lunch Creek	Marquette	Rotational	Deerborn Drive East	7/10/2025	61	554
Lunch Creek	Marquette	Rotational	Deerborn Drive West	7/10/2025	61	670
Lunch Creek	Waushara	Rotational	CTH Y	7/10/2025	48	462
Lunch Creek	Waushara	Rotational	CTH Y	7/10/2025	49	445
Lunch Creek	Waushara	Rotational	HWY 21	7/8/2025	52	330
Pine River	Waushara	Trend	CTH A	8/21/2025	54	2000
Pine River	Waushara	Trend	19th Lane	8/21/2025	52	2000
Soules Creek	Waushara	Rotational	Snowmobile Trail	7/16/2025	49	390
Soules Creek	Waushara	Rotational	Swamp Road	7/16/2025	49	900
Sucker Creek	Waushara	Rotational	CTH YY	7/30/2025	52	330
Sucker Creek	Waushara	Rotational	24th Avenue	7/31/2025	54	330
Unnamed Tributary 151900	Waushara	Rotational	CTH C	7/30/2025	53	330
Unnamed Tributary 151900	Waushara	Rotational	Lake Drive	7/30/2025	54	330
Unnamed Tributary 166200	Marquette	Rotational	Dover Court	8/21/2025	55	300
Unnamed Tributary 153600	Waushara	Rotational	Swamp Road	7/8/2025	48	330
Upper Pine River	Waushara	Trend	CTH AA	9/23/2025	53	7000
West Branch White River	Waushara	Rotational	Cottonville Avenue	7/15/2025	59	1250
West Branch White River	Waushara	Rotational	Cottonville Avenue	8/6/2025	50	3000
West Branch White River	Waushara	Rotational	CTH C	8/19/2025	54	2000
West Branch White River	Waushara	Rotational	Snowmobile Bridge	7/15/2025	56	2000
West Branch White River	Waushara	Rotational	CTH T	7/29/2025	57	483
West Branch White River	Waushara	Rotational	CTH T	7/29/2025	63	1750
West Branch White River	Waushara	Rotational	CTH Y	8/6/2025	54	1000
White Creek	Green Lake	Rotational	CTH A	8/20/2025	49	330
White Creek	Green Lake	Rotational	Spring Grove Road	8/20/2025	49	410
White River	Waushara	Rotational	Chicago Road	7/31/2025	56	1000
White River	Waushara	Trend	Cottonville Lane	8/28/2025	51	2000
White River	Waushara	Rotational	West River Street	7/23/2025	59	900
Willow Creek	Waushara	Trend	Blackhawk Road	8/25/2025	52	2000

Results

Table 2. Catch metrics per mile for brown trout on trend sites surveyed

Stream Name	Site Location	Average Length and Range (inches)	Total and (PCTL)	Young of Year (YOY) per mile	>8" (PCTL)	>12" (PCTL)	>15" (PCTL)
Chaffee Creek 2019	CTH Y	9.8 (5.5 – 15.8)	347 (65)	0	244 (80)	54 (80)	4 (65)
Chaffee Creek 2021	CTH Y	9.9 (3.5 - 17.6)	739 (82)	1	484 (92)	96 (92)	11 (83)
Chaffee Creek 2023	CTH Y	9.6 (3.2 - 16.8)	504 (37)	1	364 (89)	42 (78)	8 (77)
Chaffee Creek 2025	CTH Y	10.4 (5.6 - 18.4)	492 (75)	-	345 (88)	60 (85)	7 (77)
Pine River 2019	CTH A	11.2 (3.2 – 20.0)	177 (50)	11	137 (70)	74 (85)	34 (95)
Pine River 2021	CTH A	9.9 (3.7 – 17.4)	375 (69)	8	267 (84)	114 (94)	40 (98)
Pine River 2023	CTH A	9.4 (3.2 - 18.4)	378 (69)	24	230 (82)	87 (91)	16 (88)
Pine River 2025	CTH A	8.5 (3.1 - 16.4)	287 (63)	31	158 (74)	47 (80)	7 (77)
Pine River 2019	19th Lane	8.2 (2.5 – 22.6)	1298 (90)	375	404 (90)	79 (85)	18 (90)
Pine River 2021	19th Lane	8.1 (2.8 – 18.4)	1750 (93)	180	805 (97)	69 (87)	18 (91)
Pine River 2023	19th Lane	7.6 (2.3 - 16.6)	1624 (93)	346	768 (96)	89 (91)	5 (69)
Pine River 2025	19th Lane	7.7 (2.6 - 14.5)	2369 (95)	588	846 (97)	68 (87)	-
Upper Pine River 2018	CTH AA	6.6 (2.3 – 15.2)	292 (64)	139	33 (45)	2 (38)	1 (62)
Upper Pine River 2021	CTH AA	6.9 (2.1 – 14.2)	830 (84)	345	88 (63)	5 (42)	-
Upper Pine River 2025	CTH AA	7.1 (2.3 - 15.7)	1536 (92)	851	123 (69)	10 (53)	1 (63)
White River 2019	Cottonville Lane	9.6 (3.7 – 17.6)	221 (55)	5	119 (65)	37 (75)	16 (85)
White River 2021	Cottonville Lane	10.8 (6.1 – 21.0)	496 (75)	-	385 (90)	108 (93)	37 (97)
White River 2023	Cottonville Lane	10.4 (5.7 - 20.0)	422 (72)	-	272 (84)	98 (92)	24 (94)
White River 2025	Cottonville Lane	11.4 (6.3 - 22.6)	498 (75)	-	356 (89)	126 (95)	36 (97)
Willow Creek 2019	Blackhawk Road	9.4 (2.6 – 20.9)	333 (65)	37	201 (80)	58 (80)	16 (85)
Willow Creek 2021	Blackhawk Road	8.7 (2.3 – 20.0)	1167 (89)	248	546 (93)	119 (94)	21 (92)
Willow Creek 2023	Blackhawk Road	7.7 (2.8 – 16.2)	807 (83)	277	195 (79)	24 (66)	5 (69)
Willow Creek 2025	Blackhawk Road	8.1 (2.8 - 17.1)	746 (82)	131	321 (87)	52 (83)	10 (82)

Table 3. Catch metrics per mile for brook trout on trend sites surveyed

Stream Name	Station Location	Average Length and Range (inches)	Total and (PCTL)	Young of Year (YOY) per mile	>8" (PCTL)	>10" (PCTL)
Chaffee Creek 2025	CTH Y	7.8 (7.8 - 7.8)	1 (0)	-	-	-
Upper Pine River 2018	CTH AA	6.1 (2.2 - 11.4)	1958 (95)	827	138 (92)	16 (82)
Upper Pine River 2021	CTH AA	5.8 (2.2 - 11.0)	1169 (87)	453	105 (88)	21 (87)
Upper Pine River 2025	CTH AA	6.3 (2.7 - 12)	694 (79)	256	61 (78)	7 (71)

Table 4. Catch metrics per mile for rainbow trout on trend sites surveyed

Stream Name	Site Location	Average Length and Range (inches)	Total	Young of Year (YOY) per mile	>8"	>10"
White River 2025	Cottonville Lane	8.7 (7.2 - 9.9)	10	-	7	-

Table 5. Catch metrics per mile for brown trout on rotational sites surveyed

Stream Name	Site Location	Average Length and Range (inches)	Total and (PCTL)	Young of Year (YOY) per mile	>8" (PCTL)	>12" (PCTL)	>15" (PCTL)
Bird Creek 2022	HWY 21	7.0 (2.7 - 13.4)	1835 (94)	106	667 (95)	13 (56)	-
Bird Creek 2025	HWY 21	7.5 (2.8 - 14.4)	1098 (88)	32	486 (92)	26 (67)	-
Bird Creek 2022	HWY 22	7.5 (2.9 - 11.6)	1333 (91)	50	517 (93)	-	-
Bird Creek 2025	HWY 22	8.3 (5.1 - 14.8)	587 (78)	-	285 (85)	15 (58)	-
Bird Creek 2022	River Road	7.5 (3.0 - 17.4)	1496 (92)	63	401 (90)	11 (52)	4 (68)
Bird Creek 2025	River Road	8.1 (3.0 - 17.9)	971 (86)	14	387 (90)	49 (81)	3 (67)
Bird Creek 2022	16th Avenue	6.5 (3.5 - 9.1)	383 (70)	33	33 (45)	-	-
Bird Creek 2025	16th Avenue	7.7 (5.9 - 9.8)	126 (48)	-	79 (60)	-	-
Bowers Creek 2022	CTH C	7.3 (2.6 - 12.8)	2167 (95)	217	600 (94)	33 (72)	-
Bowers Creek 2025	CTH C	6.7 (2.3 - 11.6)	1365 (91)	95	380 (90)	-	-
Bowers Creek 2022	River Road	6.6 (3.1 - 11.4)	1767 (93)	200	417 (91)	-	-
Bowers Creek 2025	River Road	7.1 (2.5 - 13.6)	1126 (88)	63	317 (87)	47 (80)	-
Soules Creek 2019	Snowmobile Trail	7.7 (2.6 - 13.4)	1381 (90)	270	500 (90)	81 (90)	-
Soules Creek 2025	Snowmobile Trail	6.8 (2.5 - 10.6)	1621 (93)	54	391 (90)	-	-
Soules Creek 2019	Swamp Road	8.1 (2.3 - 13.6)	827 (80)	24	353 (80)	29 (65)	-
Soules Creek 2025	Swamp Road	7.3 (2.3 - 15.2)	1182 (89)	64	347 (88)	23 (65)	5 (73)

Table 6. Catch metrics per mile for brown trout on rotational sites surveyed

Stream Name	Site Location	Average Length and Range (inches)	Total and (PCTL)	Young of Year (YOY) per mile	>8" (PCTL)	>12" (PCTL)	>15" (PCTL)
Lunch Creek 2018	Czech Court	7.9 (6.1 – 9.2)	43 (30)	-	29 (43)	-	-
Lunch Creek 2025	Czech Court	8.4 (2.4 - 16.1)	320 (65)	12	160 (74)	24 (66)	12 (85)
Lunch Creek 2025	Dakota Avenue	8.0 (6.2 - 9.7)	111 (45)	-	55 (54)	-	-
Lunch Creek 2018	Dakota Lane	10.0 (5.8 – 24.3)	154 (51)	-	84 (62)	14 (57)	14 (87)
Lunch Creek 2025	Dakota Lane	8.7 (5.7 - 16.6)	163 (52)	-	100 (65)	18 (62)	9 (79)
Lunch Creek 2018	Deerborn Drive East	10.4 (7.7 – 14.6)	67 (36)	-	59 (55)	17 (61)	-
Lunch Creek 2025	Deerborn Drive East	9.2 (6.7 - 12.6)	47 (31)	-	38 (47)	9 (50)	-
Lunch Creek 2018	Deerborn Drive West	7.8 (5.3 – 10.4)	258 (62)	-	136 (72)	-	-
Lunch Creek 2025	Deerborn Drive West	8.1 (5.0 - 11.8)	149 (50)	-	78 (60)	-	-
Lunch Creek 2018	Daye Property	6.9 (2.3 – 14.4)	780 (83)	128	256 (84)	13 (56)	-
Lunch Creek 2025	Daye Property	6.3 (2.1 - 12.6)	1340 (91)	261	284 (85)	22 (65)	-
Lunch Creek 2018	CTH Y	8.1 (2.0 – 17.6)	807 (84)	59	426 (91)	88 (91)	15 (88)
Lunch Creek 2025	CTH Y	6.6 (2.0 - 12.4)	1369 (91)	178	380 (90)	23 (66)	-
Lunch Creek 2018	HWY 21	3.2 (2.1 – 5.5)	224 (59)	206	-	-	-
Lunch Creek 2025	HWY 21	2.5 (1.4 - 7.5)	1222 (89)	1063	-	-	-

Table 7. Catch metric per mile for brown trout on rotational sites surveyed

Stream Name	Site Location	Average Length and Range (inches)	Total and (PCTL)	Young of Year (YOY) per mile	>8" (PCTL)	>12" (PCTL)	>15" (PCTL)
West Branch White River 2021	Cottonville Ave	8.3 (2.8 – 16.4)	1039 (87)	34	566 (94)	84 (90)	13 (86)
West Branch White River 2025	Cottonville Ave	7.9 (2.2 - 21)	867 (85)	116	380 (90)	53 (83)	11 (84)
West Branch White River 2018	CTH C	7.4 (2.4 - 16.8)	2128 (95)	889	617 (95)	40 (77)	5 (70)
West Branch White River 2021	CTH C	6.6 (2.2 – 16.4)	2196 (95)	734	483 (92)	13 (56)	3 (66)
West Branch White River 2025	CTH C	7.4 (2.3 - 17.1)	2192 (95)	920	408 (90)	39 (76)	5 (70)
West Branch White River 2018	Snowmobile Bridge	7.5 (2.4 - 18.6)	1238 (90)	124	530 (93)	24 (66)	3 (66)
West Branch White River 2021	Snowmobile Bridge	8.2 (3.0 – 15.6)	1288 (90)	169	541 (93)	53 (83)	8 (77)
West Branch White River 2025	Snowmobile Bridge	8.2 (2.4 - 19.8)	862 (85)	100	385 (90)	55 (83)	7 (77)
West Branch White River 2018	CTH Y	7.6 (2.9 - 14.2)	1288 (91)	434	354 (89)	21 (64)	-
West Branch White River 2021	CTH Y	7.6 (2.4 – 15.2)	1690 (93)	734	523 (93)	74 (88)	5 (69)
West Branch White River 2025	CTH Y	6.7 (2.1 – 14.5)	1037 (87)	243	370 (89)	47 (80)	-
West Branch White River 2018	Below CTH T	6.9 (2.1 - 14.8)	2537 (96)	1375	468 (92)	30 (70)	-
West Branch White River 2021	Below CTH T	7.1 (2.1 – 14.6)	2444 (96)	1358	350 (88)	27 (68)	-
West Branch White River 2025	Below CTH T	6.8 (2.6 - 16.2)	2065 (94)	1153	307 (97)	43 (79)	10 (83)
West Branch White River 2021	Above CTH T	7.1 (2.1 – 14.6)	2444 (96)	1358	350 (88)	27 (68)	-
West Branch White River 2025	Above CTH T	3.1 (2.6 - 3.7)	2728 (96)	1570	305 (86)	9 (49)	3 (66)
White River 2022	Chicago Rd	8.2 (3.0 - 13.4)	1767 (93)	22	817 (97)	28 (68)	-
White River 2025	Chicago Rd	8.6 (3.9 - 14.5)	1148 (89)	5	793 (97)	31 (71)	-
White River 2022	West River St	7.6 (2.7 - 13.4)	1853 (94)	106	1100 (98)	41 (77)	-
White River 2025	West River St	9.1 (3.2 - 14.4)	841 (84)	5	629 (95)	64 (86)	-

Table 8. Catch metric per mile for brown trout on tributary sampling sites

Stream Name	Site Location	Average Length and Range (inches)	Total and (PCTL)	Young of Year (YOY) per mile	>8" (PCTL)	>12" (PCTL)	>15" (PCTL)
Unnamed Tributary 151900 2017	CTH C	4.5 (3.5 – 5.7)	64 (37)	16	-	-	-
Unnamed Tributary 151900 2025	CTH C	3.4 (2.3 - 5.7)	349 (67)	285	-	-	-
Unnamed Tributary 151900 2017	Lake Drive	3.1 (2.2 – 4.0)	320 (66)	286	-	-	-
Unnamed Tributary 151900 2025	Lake Drive	3.3 (2.1 - 5.7)	650 (80)	555	-	-	-
Unnamed Tributary 153600 2019	Swamp Road	5.8 (4.8 – 7.0)	96 (40)	31	-	-	-
Unnamed Tributary 153600 2025	Swamp Road	3.8 (2.6 - 6)	63 (36)	31	-	-	-
White Creek	CTH A	3.1 (2.6 - 3.7)	603 (79)	603	-	-	-
White Creek	Spring Grove Road	3.4 (2.7 - 4.3)	871 (85)	846	-	-	-

Table 9. Catch metrics per mile for brook trout on rotational sites surveyed

Stream Name	Site Location	Average Length and Range (inches)	Total and (PCTL)	Young of Year (YOY) per mile	>8" (PCTL)	>10" (PCTL)
Bowers Creek 2025	CTH C	3.4 (3.3 - 3.6)	31 (19)	31	-	-
Lunch Creek 2018	Daye Property	6.1 (2.3 - 11.8)	1023 (87)	205	154 (93)	26 (90)
Lunch Creek 2025	Daye Property	5.1 (2.1 - 10.5)	340 (62)	125	11 (40)	11 (77)
Lunch Creek 2018	CTH Y	6.9 (1.9 - 11.0)	1408 (92)	73	426 (99)	59 (97)
Lunch Creek 2025	CTH Y	5.6 (2.2 - 9.3)	392 (66)	142	35 (68)	-
Lunch Creek 2018	HWY 21	3.6 (2.2 - 6.9)	560 (75)	508	-	-
Lunch Creek 2025	HWY 21	3.2 (1.6 - 6.5)	253 (56)	174	-	-
Soules Creek 2019	Snowmobile Trail	4.1 (2.4 - 5.8)	27 (15)	14	-	-
Soules Creek 2025	Snowmobile Trail	5.6 (5.6 - 5.6)	13 (13)	-	-	-
Soules Creek 2019	Swamp Road	6.1 (2.5 - 7.8)	23 (15)	6	-	-
Soules Creek 2025	Swamp Road	7.0 (5.8 - 8.2)	11 (12)	-	-	-
Sucker Creek 2025	CTH YY	3.4 (3.1 - 3.7)	31 (25)	31	-	-
Unnamed Tributary 151900 2017	CTH C	4.2 (2.0 - 9.2)	1504 (93)	1206	16 (50)	-
Unnamed Tributary 151900 2025	CTH C	3.9 (2.0 - 7.1)	857 (85)	682	-	-
Unnamed Tributary 151900 2017	Lake Drive	3.5 (2.0 - 7.0)	720 (80)	603	-	-
Unnamed Tributary 151900 2025	Lake Drive	4.5 (2.0 - 7.4)	1301 (90)	873	-	-
Unnamed Tributary 166200	Dover Court	4.9 (3.4 - 7.6)	210 (57)	105	-	-
Unnamed Tributary 153600 2019	Swamp Road	5.3 (2.1 - 8.6)	560 (70)	127	63 (75)	-
Unnamed Tributary 153600 2025	Swamp Road	6.2 (5.2 - 8.0)	111 (45)	-	15 (31)	-
West Branch White River 2021	CTH C	4.0	3 (1)	-	-	-
West Branch White River 2025	CTH C	4.2 (4.2 - 4.2)	2 (2)	-	-	-
West Branch White River 2021	CTH T	4.2 (1.8 - 9.6)	97 (37)	63	9 (37)	-
West Branch White River 2025	CTH T	4.6 (2.6 - 8.5)	12 (12)	6	3 (14)	-

Table 10. Catch metrics per mile for rainbow trout on rotational sites surveyed

Stream Name	Site Location	Average Length and Range (inches)	Total	Young of Year (YOY) per mile	>8"	>10"
Bird Creek 2022	HWY 21	6.2 (1.9 - 11.2)	33	13	13	7
Bird Creek 2025	HWY 21	7.2 (6.2 - 8.2)	19	-	6	-
Bird Creek 2022	River Road	7.2 (6.1 - 8.3)	7	-	4	-
Bird Creek 2025	River Road	6.2 (4.7 - 8.5)	49	10	14	-
West Branch White River 2018	CTH C	6.2 (2.2 - 11.4)	515	245	79	18
West Branch White River 2021	CTH C	6.7 (2.3 - 11.8)	367	174	84	16
West Branch White River 2025	CTH C	6.3 (2.4 - 10.7)	543	319	89	21
West Branch White River 2018	Below CTH T	6.1 (2.4 - 10.2)	428	181	60	3
West Branch White River 2025	Below CTH T	5.8 (2.4 - 10.6)	241	131	65	21
West Branch White River 2025	Above CTH T	5.2 (1.8 - 11.5)	314	244	15	9
West Branch White River 2018	CTH Y	5.9 (2.4 - 10.2)	148	42	21	5
West Branch White River 2021	CTH Y	5.7 (2.6 - 9.1)	63	11	11	-
West Branch White River 2025	CTH Y	6.0 (3.0 - 7.8)	52	5	-	-
West Branch White River 2021	Cottonville Avenue	7.9 (5.9 - 10.6)	34	-	13	8
West Branch White River 2025	Cottonville Avenue	6.7 (2.2 - 11.0)	74	13	21	8
West Branch White River 2018	Snowmobile Bridge	7.2 (3.0 - 10.8)	132	5	26	8
West Branch White River 2021	Snowmobile Bridge	8.3 (5.4 - 12.4)	90	-	37	13
West Branch White River 2025	Snowmobile Bridge	6.4 (5.3 - 7.4)	23	-	-	-

Table 11. Catch metrics per mile for brown trout on habitat assessment survey

Stream Name	Site Location	Length Range (inches)	Total and (PCTL)	Young of Year (YOY) per mile	>8" (PCTL)	>12" (PCTL)	>15" (PCTL)
West Branch 2009	1 st 1000ft Cottonville Ave	<4.0 – 13	475 (74)	227	95 (64)	5 (42)	-
West Branch 2012	1 st 1000ft Cottonville Ave	<4.0 – 13	972 (86)	32	454 (92)	26 (67)	-
West Branch 2025	1 st 1000ft Cottonville Ave	<4.0 – 16	787 (83)	111	359 (89)	53 (83)	5 (69)
West Branch 2009	2 nd 1000ft Cottonville Ave	<4.0 – 12	692 (81)	317	121 (69)	5 (42)	-
West Branch 2012	2 nd 1000ft Cottonville Ave	<4.0 – 13	1067 (87)	132	417 (91)	42 (78)	5 (69)
West Branch 2025	2 nd 1000ft Cottonville Ave	<4.0 – 14	1093 (88)	232	391 (90)	37 (75)	-
West Branch 2009	3 rd 1000ft Cottonville Ave	<4.0 – 13	813 (84)	343	180 (77)	21 (64)	-
West Branch 2012	3 rd 1000ft Cottonville Ave	<4.0 – 18	1272 (90)	143	665 (95)	74 (88)	11 (83)
West Branch 2025	3 rd 1000ft Cottonville Ave	<4.0 - >20	987 (87)	106	412 (90)	69 (87)	32 (96)

Table 11. Catch metrics per mile for rainbow trout on habitat assessment survey

Stream Name	Site Location	Length Range (inches)	Total and (PCTL)	Young of Year (YOY) per mile	>8" (PCTL)	>12" (PCTL)	>15" (PCTL)
West Branch 2009	1 st 1000ft Cottonville Ave	7	16	-	-	-	-
West Branch 2012	1 st 1000ft Cottonville Ave	<4.0 – 11	116	11	32	-	-
West Branch 2025	1 st 1000ft Cottonville Ave	<4.0 – 10	69	21	5	-	-
West Branch 2009	2 nd 1000ft Cottonville Ave	6	5	-	-	-	-
West Branch 2012	2 nd 1000ft Cottonville Ave	<4.0 – 10	121	5	37	-	-
West Branch 2025	2 nd 1000ft Cottonville Ave	<4.0 – 10	95	26	16	-	-
West Branch 2009	3 rd 1000ft Cottonville Ave	<4.0 – 6	32	11	-	-	-
West Branch 2012	3 rd 1000ft Cottonville Ave	<4.0 – 12	90	11	32	5	-
West Branch 2025	3 rd 1000ft Cottonville Ave	<4.0 – 10	37	11	16	-	-