



WISCONSIN DEPARTMENT OF NATURAL RESOURCES

Fisheries Information Sheet

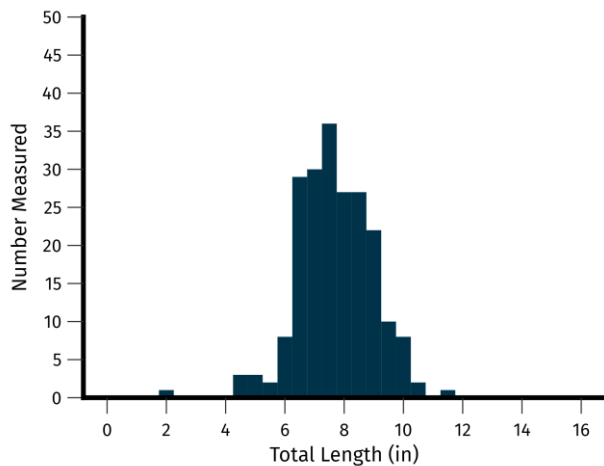
LAKE: Pickerel

COUNTY: Oneida

YEAR: 2024

Introduction

The Wisconsin Department of Natural Resources (DNR) assessed bass, muskellunge, and panfish in Pickerel Lake during the spring of 2024. Pickerel is a 736-acre drainage lake with 93 dwelling and three resorts along the 7.7 miles of shoreline. Gamefish were collected over three electrofishing transects covering six miles of the shoreline. All species were collected during three half-mile transects. Muskellunge and panfish were targeted with eight fyke nets checked daily over eight nights.



BLACK CRAPPIE



A total of 1,296 black crappies were captured while surveying Pickerel Lake (40 electrofishing, 1,256 netting). Black crappie relative abundance was above the 90th percentile for complex-cool-dark lakes (i.e., 90% of similar lakes have lower relative abundance of black crappie) and 75th percentile among other Oneida County lakes. Lengths of measured black crappies varied between 2.2 inches and 11.5 inches, with a mean length of 7.7 inches. Forty-two percent of measured black crappies were 8 inches or greater.

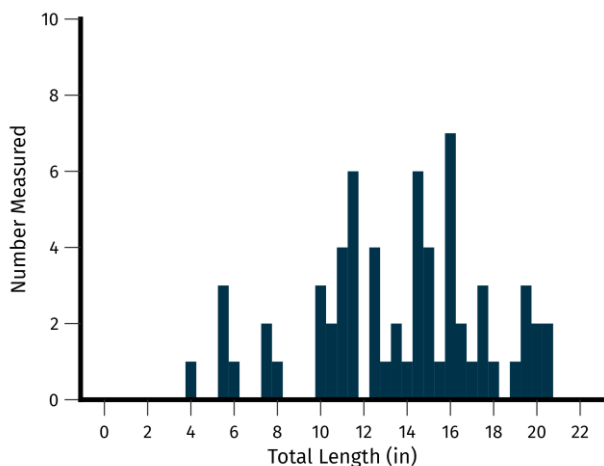
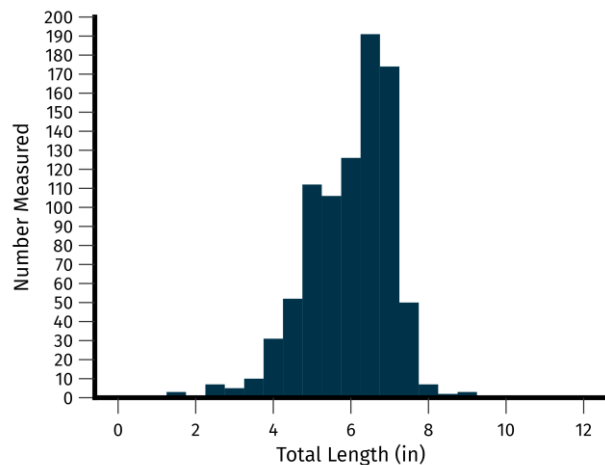
19.6 black crappie per net-night	
Quality Size \geq 8 inches	4.3 per net-night
Preferred Size \geq 10 inches	0.5 per net-night

BLUEGILL



A total of 6,755 bluegills were captured while surveying Pickerel Lake (523 electrofishing, 6,232 netting). Bluegill relative abundance was around the 95th percentile for complex-cool-dark lakes and 75th percentile among other Oneida County lakes. The lengths of measured bluegills varied between 1.5 inches and 9.1 inches, with a mean length of 6.0 inches. Fifty-nine percent of measured bluegill were 6 inches or greater.

97.4 bluegill per net-night	
Quality Size \geq 6 inches	26.0 per net-night
Preferred Size \geq 8 inches	0.6 per net-night



LARGEMOUTH BASS



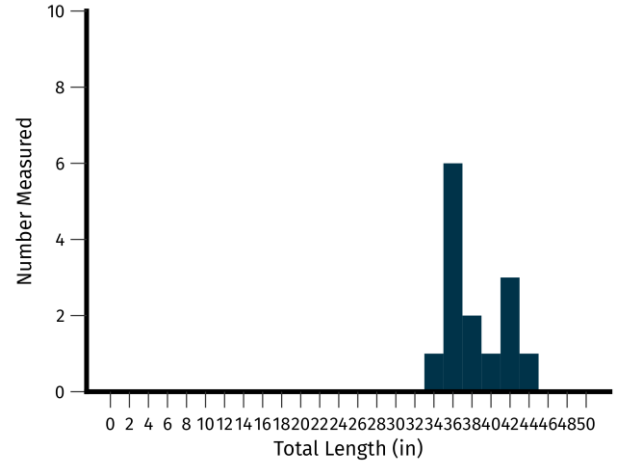
A total of 72 largemouth bass were captured while surveying Pickerel Lake (22 electrofishing, 50 netting). Largemouth bass relative abundance was slightly below the 50th percentile for complex-cool-dark lakes and near the 25th percentile among other Oneida County lakes. The lengths of measured largemouth bass varied between 4.2 inches and 20.4 inches, with a mean length of 13.6 inches. Sixty-four percent of measured largemouth bass were 12 inches or greater.

3.7 largemouth bass per mile	
Quality size \geq 12 inches	3.0 per mile
Preferred size \geq 15 inches	0.7 per mile

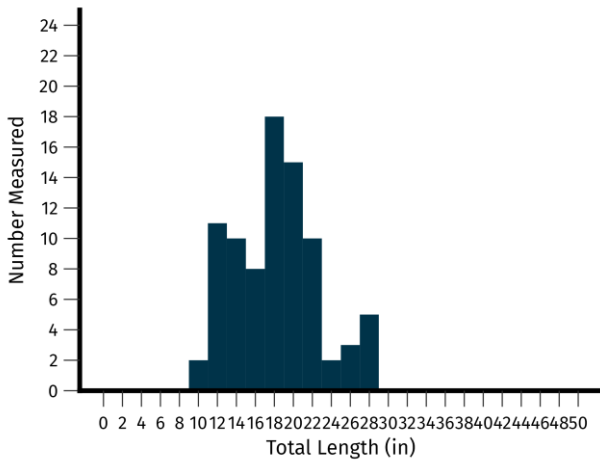
MUSKELLUNGE



A total of 14 muskellunge were captured while surveying Pickerel Lake (0 electrofishing, 14 netting). Muskellunge relative abundance was near the 25th percentile for complex-cool-dark lakes and near the 25th percentile among other Oneida County lakes. The lengths of measured muskellunge varied between 34.8 inches and 44.0 inches, with a mean length of 38.3 inches. Caution should be applied when interpreting muskellunge size structure as a low number were captured.



0.21 muskellunge per net-night	
Quality size \geq 30 inches	0.21 per net-night
Preferred size \geq 38 inches	0.08 per net-night



NORTHERN PIKE



A total of 125 northern pike were captured while surveying Pickerel Lake (15 electrofishing, 111 netting). Northern pike relative abundance was above the 50th percentile for complex-cool-dark lakes and 50th percentile among other Oneida County lakes. Lengths of measured northern pike varied between 9.6 inches and 28.7 inches, with a mean length of 18.2 inches. Twenty-three percent of measured northern pike were 21 inches or greater.

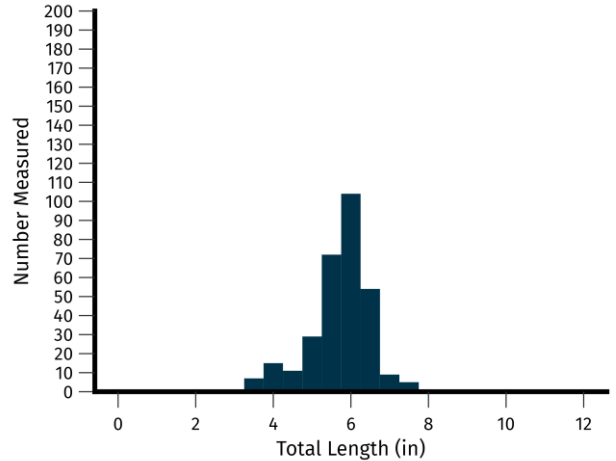
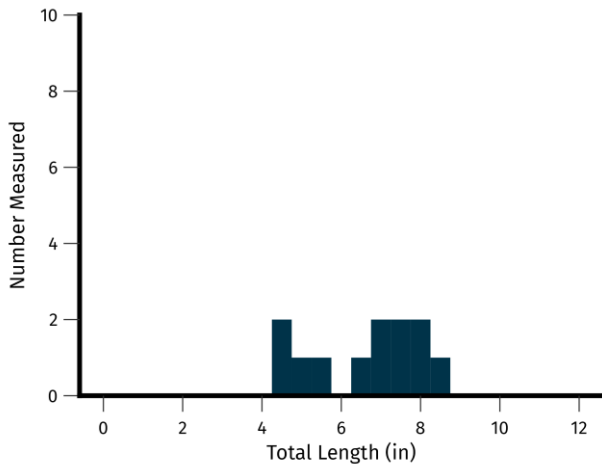
1.72 northern pike per net-night	
Quality Size \geq 21 inches	0.3 per net-night
Preferred Size \geq 28 inches	0.1 per net-night

PUMPKINSEED



A total of 2,304 pumpkinseeds were captured while surveying Pickerel Lake (123 electrofishing, 2,181 netting). Pumpkinseed relative abundance was around the 95th percentile for complex-cool-dark lakes and around the 95th percentile among other Oneida County lakes. The lengths of measured pumpkinseeds varied between 3.4 inches and 9.1 inches, with a mean length of 5.7 inches. Forty-five percent of measured pumpkinseeds were 6 inches or greater.

34.1 pumpkinseed per net-night	
Quality Size \geq 6 inches	5.3 per net-night
Preferred Size \geq 8 inches	0.1 per net-night



ROCK BASS



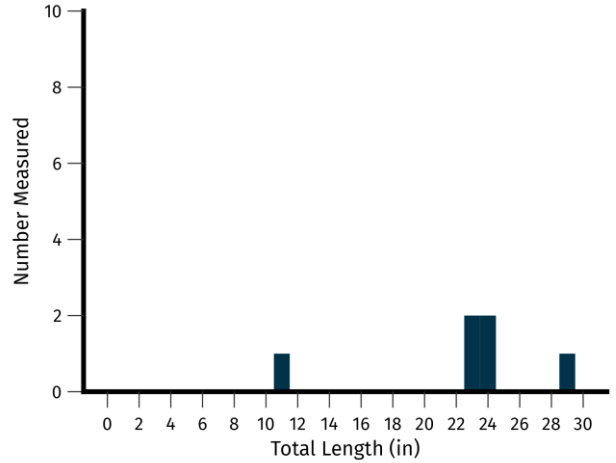
A total of 97 rock bass were captured while surveying Pickerel Lake (three electrofishing, 94 netting). Rock bass relative abundance was around the 25th percentile for complex-cool-dark lakes and 25th percentile among other Oneida County lakes. The lengths of measured rock bass varied between 4.4 inches and 8.6 inches, with a mean length of 6.6 inches. Caution should be applied when interpreting rock bass size structure as a low number were measured.

1.5 rock bass per net-night	
Quality size \geq 7 inches	0.6 per net-night
Preferred size \geq 9 inches	0.3 per net-night

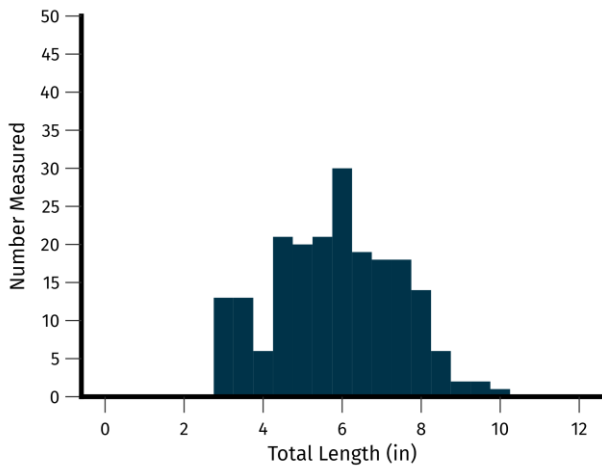
WALLEYE



A total of seven walleye were captured while surveying Pickerel (one electrofishing, six netting). Walleye relative abundance was below the 5th percentile for complex-cool-dark lakes and 5th percentile among other Oneida County lakes. The lengths of measured individuals varied between 11.0 inches and 29.5 inches with a mean length of 22.6 inches. Caution should be applied when interpreting walleye size structure as a low number were captured.



0.1 walleye per net-night	
Quality Size \geq 15 inches	0.1 per net-night
Preferred Size \geq 20 inches	0.1 per net-night



YELLOW PERCH



A total of 593 yellow perch were captured while surveying Pickerel (111 electrofishing, 482 netting). Yellow perch relative abundance was around the 50th percentile for complex-cool-dark and near the 75th percentile among Oneida County lakes. Lengths of measured yellow perch varied between 2.8 inches and 9.8 inches, with a mean length of 5.8 inches. Ten percent of measured yellow perch were 8 inches or greater.

7.5 yellow perch per net-night	
Quality Size \geq 8 inches	1.1 per net-night
Preferred Size \geq 10 inches	0.0 per net-night

OTHER SPECIES

Other species captured in Pickerel Lake included black bullhead (50), bluntnose minnow (26), golden shiner (22), johnny darter (11), mimic shiner (four), pumpkinseed x bluegill hybrid (three), smallmouth bass (three), white sucker (two) and yellow bullhead (1,355).

Summary

Pickerel Lake is a complex-cool-dark lake possessing cold-water and warm-water fish species accessible by a paved boat ramp on the south side of the lake at the end of Pinewood Drive. Panfish dominated the fishery in Pickerel Lake with bass, muskellunge and northern pike serving a smaller role. Panfish and bullhead relative abundance has increased since the last survey in 2016 while most gamefish species' relative abundance has decreased or remained low. Bluegills and pumpkinseeds display a decline in relative abundance around 6 inches which may indicate angler harvest impacts or density dependence resulting in stunting. The lack of muskellunge and walleye of smaller lengths indicates limited if any spawning success of those species within Pickerel Lake despite spawning habitat alternations in 2001.

Table 1. General fishing regulations for Pickerel Lake, in Oneida Wisconsin in 2024. For current regulations or species not listed below, check the most recent state fishing regulations pamphlet.

SPECIES	SEASON DATES	DAILY BAG LIMIT	SIZE LIMIT
Bullheads	Open all year	Unlimited	No minimum length
Largemouth bass	May to mid-June	5	14" minimum length
largemouth bass and Smallmouth Bass	Mid-June to March	5	14" minimum length
Muskellunge	End May to Dec 31	1	40" minimum length
Northern pike	May to March	5	No minimum length
Panfish	Open all year	25	No minimum length
Rock bass	Open all year	Unlimited	No minimum length
Smallmouth bass	May to mid-June	Catch and release only	Catch and release only

Acknowledgements

For answers to questions about fisheries management activities on Pickerel Lake, contact:

Nathan J. Lederman

Wisconsin Department of Natural Resources
107 Sutliff Ave
Rhineland, WI 54501
715-525-2898
nathaniel.lederman@wisconsin.gov