



WISCONSIN DEPARTMENT OF NATURAL RESOURCES

Fisheries Information Sheet

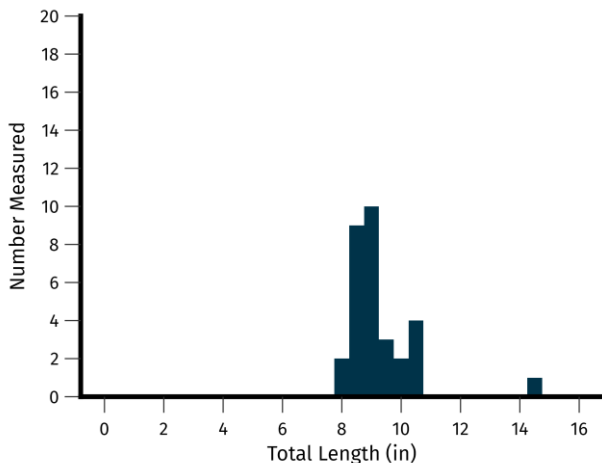
LAKE: Flannery-Velvet

COUNTY: Oneida

YEAR: 2024

Introduction

The Wisconsin Department of Natural Resources (DNR) assessed the bass and panfish fisheries in Flannery and Velvet Lakes during the spring of 2024. Flannery Lake is a 107-acre seepage lake with 73 dwellings along the 3.5 miles of shoreline connected to the 34-acre seepage Velvet Lake with 21 dwellings along its 1.4 miles of shoreline. Gamefish were collected over three electrofishing transects (two in Flannery and one in Velvet) covering 5.1 miles of the shoreline. All species were collected during three half mile transects (two in Flannery and one in Velvet) covering one and a half miles of shoreline.



BLACK CRAPPIE



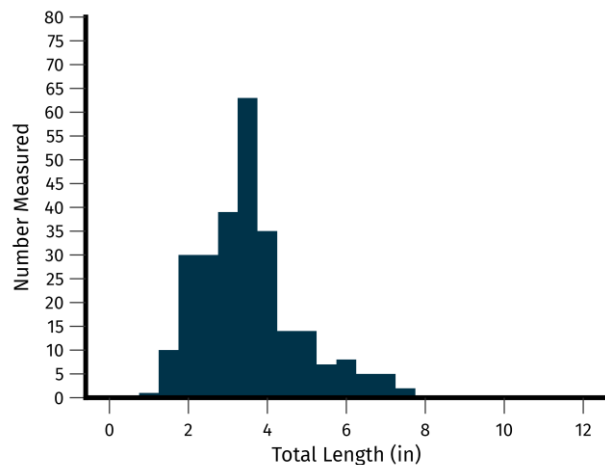
Thirty-one black crappies were captured while surveying Flannery (23) and Velvet (eight). Black crappie catch per mile was in the 75th percentile statewide (i.e., 75% of lakes have lower relative abundance of black crappie) and the 60th percentile among other Oneida County lakes. The lengths of measured black crappies varied between 8.1 inches and 14.6 inches, with a mean length of 9.3 inches. All measured black crappies were 8 inches or greater.

20.7 black crappie per mile	
Quality Size \geq 8 inches	20.7 per mile
Preferred Size \geq 10 inches	3.3 per mile

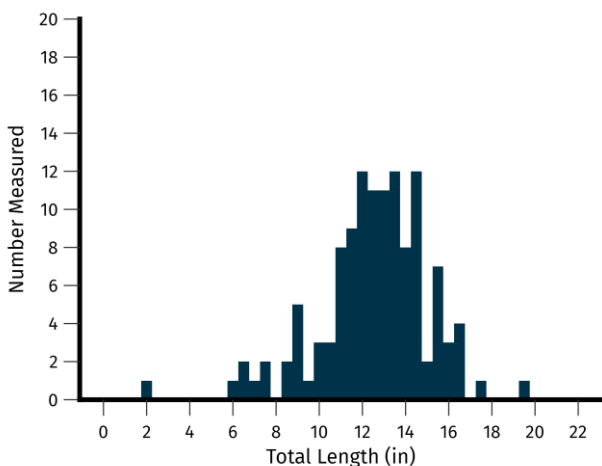
BLUEGILL



Two hundred and eighty-nine bluegills were captured while surveying Flannery (190) and Velvet (99). Bluegill catch per mile was around the 75th percentile for simple-cool-clear lakes and 75th percentile among other Oneida County lakes. The lengths of measured bluegills varied between 1.2 inches and 7.5 inches, with a mean length of 3.5 inches. Six percent of measured bluegill were 6 inches or greater.



192.7 bluegill per mile	
Quality size \geq 6 inches	11.3 per mile
Preferred size \geq 8 inches	0.0 per mile



LARGEMOUTH BASS



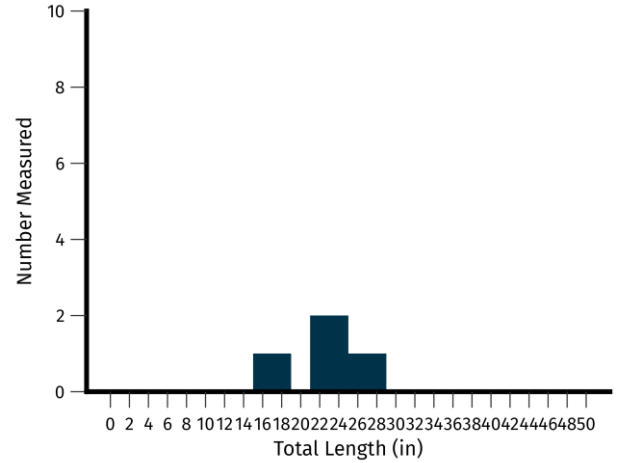
One hundred and twenty-two largemouth bass were captured while surveying Flannery (86) and Velvet (36). Largemouth bass catch per mile was around the 60th percentile for simple-cool-clear lakes and near the 75th percentile among other Oneida County lakes. The lengths of measured largemouth bass varied between 4.2 inches and 20.4 inches, with a mean length of 13.6 inches. Sixty-five percent of measured largemouth bass were 12 inches or larger. Growth of largemouth bass was on average one inch slower at age than other similar lakes.

23.9 largemouth bass per mile	
Quality size \geq 12 inches	15.5 per mile
Preferred size \geq 15 inches	3.5 per mile

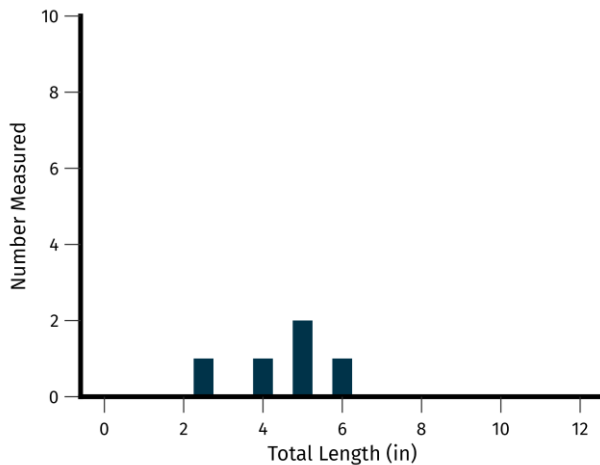
NORTHERN PIKE



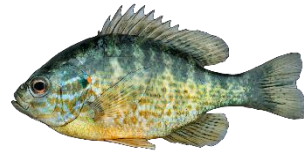
Eight northern pike were captured while surveying Flannery (6) and Velvet (2). Northern pike catch per mile was above 50th percentile among other Oneida County lakes. The lengths of measured northern pike varied between 16.0 inches and 29.0 inches, with a mean length of 22.7 inches. Seventy-five percent of measured northern pike were 21 inches or greater.



1.6 northern pike per mile	
Quality Size \geq 21 inches	1.2 per mile
Preferred Size \geq 28 inches	0.2 per mile



PUMPKINSEED



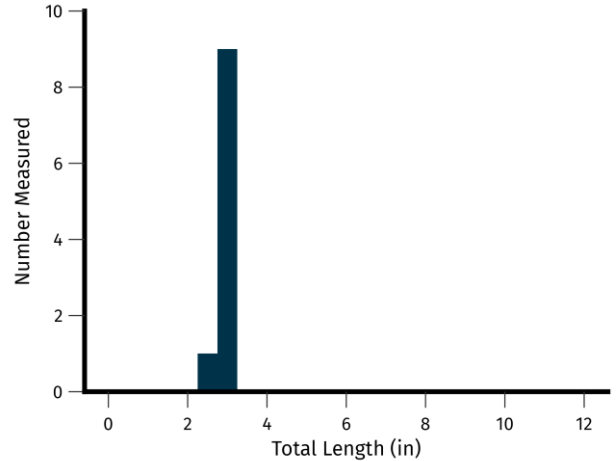
Five pumpkinseeds were captured while surveying Flannery (3) and Velvet (2). Pumpkinseed catch per mile was around the 25th percentile for simple-cool-clear lakes and around the 25th percentile among other Oneida County Lakes. Lengths of measured pumpkinseeds varied between 2.4 inches and 6.2 inches, with a mean length of 4.5 inches. Forty-five percent of measured pumpkinseeds were 6 inches or greater.

3.3 pumpkinseed per mile	
Quality Size \geq 6 inches	0.7 per mile
Preferred Size \geq 8 inches	0.0 per mile

YELLOW PERCH



Ten yellow perch were captured while surveying Flannery (10) and Velvet (0). Yellow perch catch per mile was in the 42nd percentile statewide and near the 25th percentile among Oneida County lakes. The lengths of measured yellow perch varied between 2.5 inches and 3.1 inches, with a mean length of 2.8 inches. No measured yellow perch were greater than 8 inches.



6.7 yellow perch per mile	
Quality Size \geq 8 inches	0.0 per mile
Preferred Size \geq 10 inches	0.0 per mile

OTHER SPECIES

Other species encountered while surveying Flannery and Velvet Lake included: central mudminnow (one) pumpkinseed x bluegill hybrid (one) and yellow bullhead (seven).

Summary

Flannery-Velvet is a simple-cool-clear lake with a mixed fishery with warm-water species that can be accessed by a paved boat ramp on the north side of Flannery on Flannery Lake Road. The relative abundance of black crappie increased, bluegill decreased, largemouth bass remained similar, northern pike decreased, and yellow perch decreased in 2024 compared to the previous 2011 survey. The mean size of black crappie increased, bluegill remained small, largemouth bass remained similar, northern pike increased and yellow perch remained small in 2024 compared to the previous 2011 survey. Caution should be applied when interpreting size structure for most fish species within Flannery-Velvet as few individuals were captured. However, the oligotrophic nature of clearer and cool waters, such as Flannery-Velvet, results in lower nutrient levels within the system which is likely limiting the size and abundance of the fish within these lakes.

Table 1. General fishing regulations for Flannery and Velvet Lakes, in Oneida Wisconsin in 2024.

SPECIES	SEASON DATES	DAILY BAG LIMIT	SIZE LIMIT
Bullheads	Open all year	Unlimited	No minimum length
Largemouth bass	May to mid-June	5	14" minimum length
largemouth bass and Smallmouth Bass	Mid-June to March	5	14" minimum length
Northern pike	May to March	5	No minimum length
Panfish	Open all year	25	No minimum length
Smallmouth bass	May to mid-June	Catch and release only	Catch and release only

Selected fishing regulations for Flannery and Velvet Lakes are summarized above (Table 1). While the regulatory information provided was current at the time of surveying, it should not be used as a substitute for the current fishing regulation pamphlet. You may obtain a copy of current fishing regulations by downloading a copy from the [DNR Fishing Regulations page](#).

Acknowledgements

For answers to questions about fisheries management activities on Flannery and Velvet Lakes, contact:

Nathan J. Lederman

Wisconsin Department of Natural Resources

107 Sutliff Ave

Rhineland, WI 54501

715-525-2898

nathaniel.lederman@wisconsin.gov