



WISCONSIN DEPARTMENT OF NATURAL RESOURCES

Fisheries Information Sheet

LAKE: Big Carr

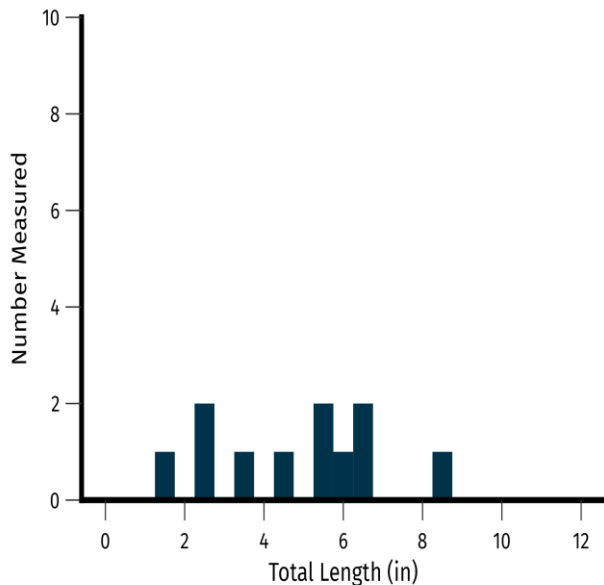
COUNTY: Oneida

YEAR: 2024

Introduction

The Wisconsin Department of Natural Resources (DNR) assessed bass, panfish, lake trout and cisco during 2022 and 2024. Big Carr is a 209-acre seepage lake with a maximum depth of 71 feet and 24 private dwellings and one camp along the shoreline. Four fyke nets and four short term gillnets were set targeting lake trout in the fall of 2022. An electrofishing survey was conducted around the 3.6 miles of shoreline in the spring of 2024. Gamefish were collected around the entire shoreline while panfish and all other species were collected in two half mile transects. Two overnight gillnets were set targeting cisco and lake trout during the summer of 2024.

BLUEGILL



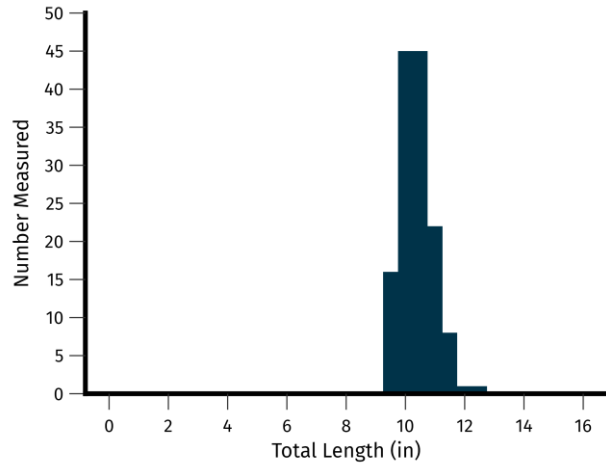
Two hundred and eleven bluegills were captured while surveying Big Carr. Bluegill relative abundance was below the 25th percentile for complex two-story lakes (i.e., 25% of similar lakes have lower relative abundance of bluegill) and 20th percentile among other Oneida County Lakes. Lengths of measured bluegills varied between 1.7 inches and 8.5 inches, with a mean length of 4.9 inches. 27% of measured bluegill were 6 inches or greater. Caution should be applied when interpreting size structure as few individuals were measured.

8.0 bluegill per mile \geq 3 inches	
Quality Size \geq 6 inches	3.0 per mile
Preferred Size \geq 8 inches	1.0 per mile

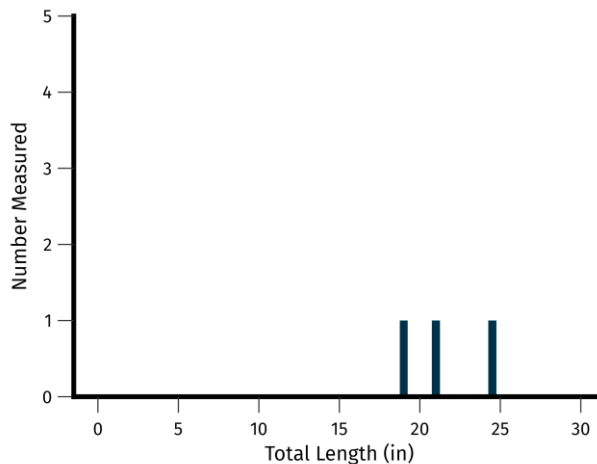
CISCO



Two hundred and sixty cisco were captured while surveying Big Carr. Cisco relative abundance was very high compared to other lakes statewide. Lengths of measured cisco varied between 9.3 inches and 12.4 inches, with a mean length of 10.4 inches. The 14-year-old age class was the most abundant and least abundant was 4- and 6-year-old age class indicating poor recruitment occurring in recent years potentially the result of density dependence.



LAKE TROUT



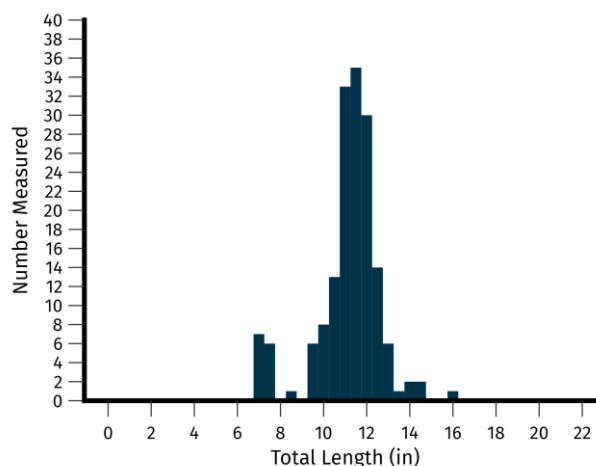
Three lake trout were captured while surveying Big Carr. Lengths of lake trout varied between 19.1 inches and 24.5 inches, with a mean length of 21.5 inches. Each captured lake trout was missing their left pectoral fin indicating they were from the 2018 stocking.

Catch rates	
Gill net	2.0 per net-night
Fyke net	0.12 per net-night

LARGEMOUTH BASS

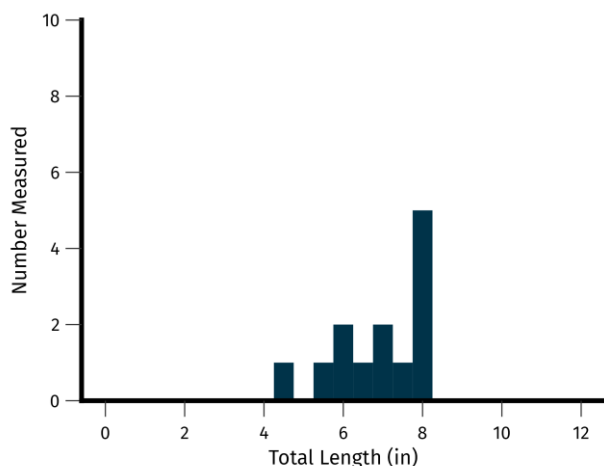


Two hundred and two largemouth bass were captured while surveying Big Carr. Largemouth bass relative abundance was above the 90th percentile for complex two-story lakes and 90th percentile among other Oneida County lakes. Lengths of measured largemouth bass varied between 6.8 inches and 15.9 inches, with a mean length of 11.2 inches. 27% of measured largemouth bass were 12 inches or greater.



37.6 captured per mile \geq 8 inches	
Quality size \geq 12 inches	11.1 per mile
Preferred size \geq 15 inches	0.25 per mile

ROCK BASS



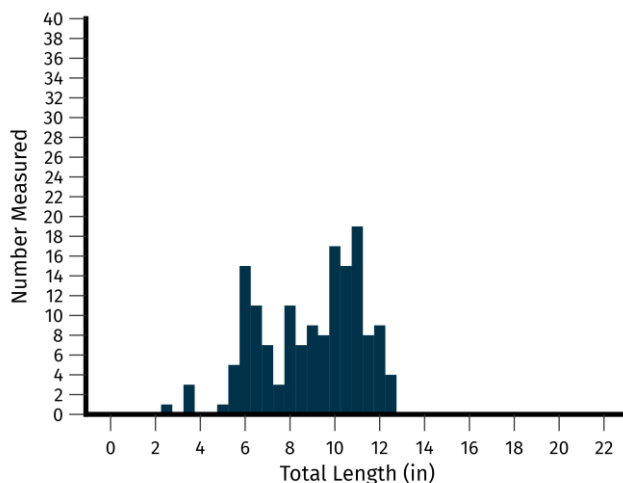
One hundred and two rock bass were captured while surveying Big Carr. Rock bass relative abundance was above the 50th percentile for complex two-story lakes and 50th percentile among other Oneida County lakes. Lengths of measured rock bass varied between 4.3 inches and 8.0 inches, with a mean length of 6.9 inches. 62% of measured rock bass were 7 inches or greater. Caution should be applied when interpreting size structure as few individuals were measured.

13.0 captured per mile \geq 4 inches	
Quality size \geq 7 inches	8.0 per mile
Preferred size \geq 9 inches	0.0 per mile

SMALLMOUTH BASS



Two hundred and two smallmouth bass were captured while surveying Big Carr. Smallmouth bass relative abundance was above the 95th percentile for complex two-story lakes and 90th percentile among other Oneida County Lakes. Lengths of measured smallmouth bass varied between 2.6 inches and 13.2 inches, with a mean length of 9.1 inches. 24% of measured smallmouth bass were 11 inches or greater.



27.5 smallmouth bass per mile \geq 7 inches	
Quality size \geq 11 inches	9.2 per mile
Preferred size \geq 14 inches	0.0 per mile

OTHER SPECIES

Other species encountered in Big Carr included black crappie (2), bluntnose minnow (9), mimic shiner (6), mottled sculpin (1), pumpkinseed (1), white sucker (2) and yellow bullhead (9).

Summary

Big Carr is a complex two-story lake with a mixed fishery. Bass relative abundance has been increasing while panfish relative abundance has remained stable across three surveys since 2003. Cisco are abundant in Big Carr leading to stocking Black Oak strain of lake trout since 2005. Limited success of lake trout stocking appears to be occurring with only three lake trout being captured, all coming from the 2018 stocking. Ample forage is available for larger lake trout but forage for smaller individuals may be limited. Bass abundance may potentially be limiting survival of stocked individuals and reproductive success of adults. Mysis, which is an important food resource of juvenile lake trout, could also be limited in the system.

Table 1. General fishing regulations for Big Carr Lake, in Oneida Wisconsin in 2024.

SPECIES	SEASON DATES	DAILY BAG LIMIT	SIZE LIMIT
Cisco	Open all year	10	No minimum
Largemouth bass	May to mid-June	5	14" minimum length
largemouth bass and Smallmouth Bass	Mid-June to March	5	14" minimum length
Lake trout	May to end of Sep	1	30" minimum length
Muskellunge	End May to Dec 31	1	40" minimum length
Panfish	Open all year	25	No minimum length
Rock bass	Open all year	Unlimited	No minimum length
smallmouth bass	May to mid-June	Catch and release only	Catch and release only

Selected fishing regulations for Big Carr are summarized above (Table 1). While the regulatory information provided was current at the time of surveying, it should not be used as a substitute for the current fishing regulation pamphlet. You may obtain a copy of current fishing regulations by downloading a copy from the [DNR Fishing Regulations page](#).

Acknowledgements

For answers to questions about fisheries management activities on Big Carr Lake, contact:

Nathan J. Lederman Fisheries Biologist

Wisconsin Department of Natural Resources

107 Sutliff Ave

Rhineland, WI 54501

715-525-2898

nathaniel.lederman@wisconsin.gov