



WISCONSIN DEPARTMENT OF NATURAL RESOURCES

Fisheries Information Sheet

LAKE: West Horsehead Lake

COUNTY: Oneida

YEAR: 2023

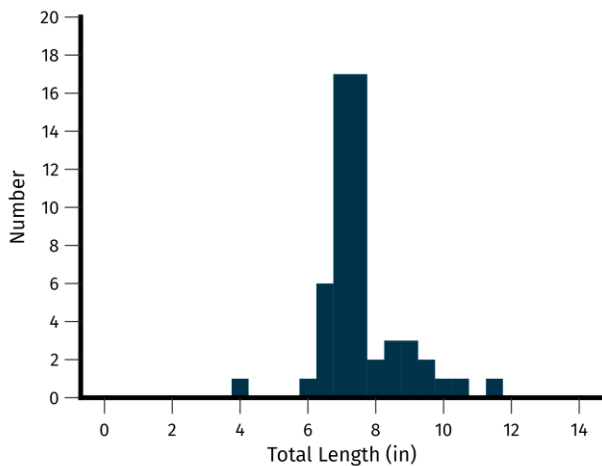
Introduction

The Wisconsin Department of Natural Resources (DNR) assessed bass and panfish in West Horsehead Lake during the spring of 2023 with an electrofishing survey. West Horsehead Lake is a drainage lake with 145 surface acres, 2.8 miles of shoreline, a maximum depth of 23 feet and 45 dwellings on the shoreline. Gamefish were collected during the entire 2.6-mile circuit while panfish and all other species were collected in two half-mile transects.

BLACK CRAPPIE



A total of 55 black crappies were captured while surveying West Horsehead Lake. Lengths of measured black crappies varied between 3.8 inches and 11.6 inches, with a mean length of 7.5 inches. A smaller size structure was found, with 3% of measured black crappies being 10 inches or greater.

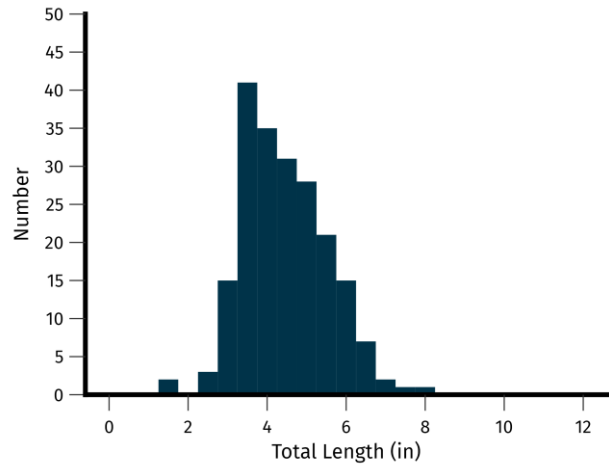


55.0 black crappie per mile \geq 5 inches	
Quality Size \geq 8 inches	12.0 per mile
Preferred Size \geq 10 inches	2.0 per mile

BLUEGILL



A total of 253 bluegills were captured while surveying West Horsehead Lake. Lengths of measured bluegills varied between 1.6 inches and 7.9 inches, with a mean length of 4.4 inches. A smaller size structure was found, with 10% of measured bluegills being 6 inches or greater.

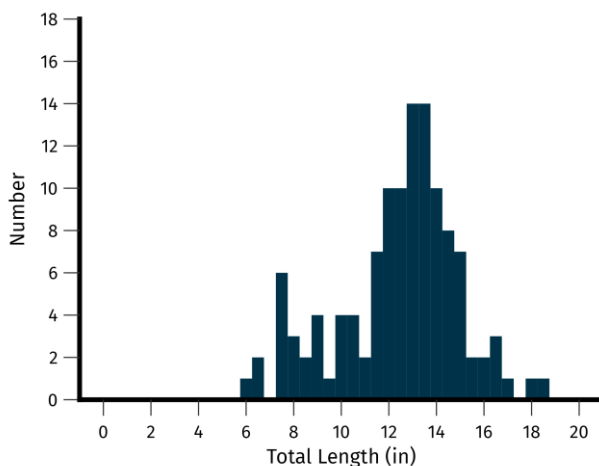


191.0 bluegill per mile \geq 3 inches	
Quality Size \geq 6 inches	22.0 per mile
Preferred Size \geq 8 inches	0.0 per mile

LARGEMOUTH BASS



A total of 119 largemouth bass were captured while surveying West Horsehead Lake. Lengths of measured largemouth bass varied between 6.1 inches and 18.4 inches, with a mean length of 12.4 inches. A smaller size structure of largemouth bass was found, with 11% of measured individuals being 14 inches or greater.

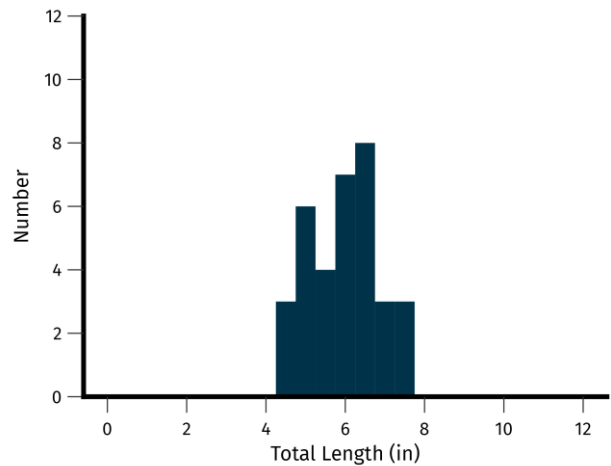


41.5 largemouth bass per mile \geq 8 inches	
Quality Size \geq 12 inches	31.2 per mile
Preferred Size \geq 15 inches	5.4 per mile

PUMPKINSEED



A total of 34 pumpkinseeds were captured while surveying West Horsehead Lake. Lengths of measured pumpkinseeds varied between 4.3 inches and 7.7 inches, with a mean length of 5.9 inches. A decent size structure was found, with 56% of measured pumpkinseeds being 6 inches or greater but none larger than 8 inches.



34.0 pumpkinseed per mile \geq 3 inches	
Quality Size \geq 6 inches	19.0 per mile
Preferred Size \geq 8 inches	0.0 per mile

OTHER SPECIES

Other species encountered on West Horsehead Lake included bluntnose minnow (7), common shiner (2), golden shiner (10), Iowa darter (1), johnny darter (1), muskellunge (1), northern pike (1), walleye (1), white sucker (40), yellow bullhead (7) and yellow perch (3).

Summary

West Horsehead Lake is a complex, cool, dark lake with a mixed fishery that can be accessed by a paved boat ramp on the west side of the lake, off Little Horsehead Landing Road. Panfish relative abundance in West Horsehead Lake during the 2023 survey, remained similar to the last survey in 2013 while largemouth bass and white sucker abundance increased. Largemouth bass are in high abundance and bluegill are in moderate abundance relative to other lakes in northern Wisconsin.

Table 1. General fishing regulations for West Horsehead Lake, in Oneida Wisconsin.

SPECIES	SEASON DATES	DAILY BAG LIMIT	SIZE LIMIT
Bullhead	Open all year	Unlimited bag	No minimum length
Largemouth bass	May to mid-June	5	14" minimum length
Largemouth bass and smallmouth bass	Mid-June to March	5	14" minimum length
Northern pike	May to March	5	No minimum length
Muskellunge	End of May to Dec 31	1	40" minimum length
Panfish	Open all year	25	No minimum length
Smallmouth bass	May to mid-June	Catch and release only	Catch and release only
Walleye	May to March	3, only 1 over 24"	15" minimum, 20-24" protected slot

Acknowledgements

For answers to questions about fisheries management activities on West Horsehead Lake, contact:

Nathan J. Lederman

Wisconsin Department of Natural Resources
107 Sutliff Ave
Rhinelander, WI 54501
715-525-2898
nathaniel.lederman@wisconsin.gov