



# WISCONSIN DEPARTMENT OF NATURAL RESOURCES

## Fisheries Information Sheet

**LAKE:** Long Lake

**COUNTY:** Oneida

**YEAR:** 2023

### Introduction

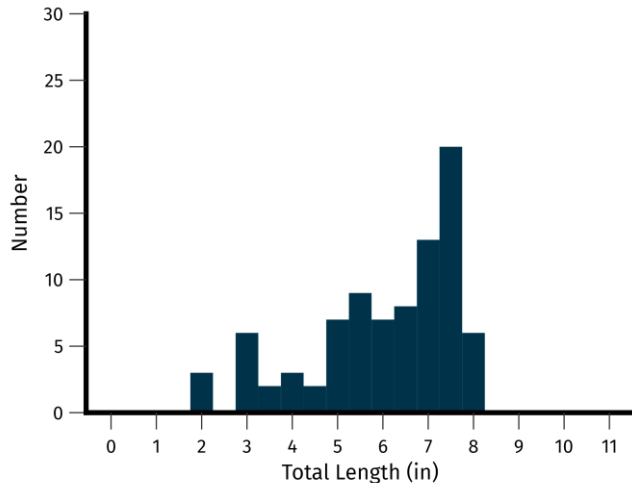
The Wisconsin Department of Natural Resources (DNR) assessed the bass, panfish and walleye fisheries of Long Lake in the spring of 2023. Long Lake is a 113-acre seepage lake with 3.3 miles of shoreline, a maximum depth of 58 feet and 20 dwellings on the shoreline. Gamefish were collected during two electrofishing transects covering 2.9 miles of the shoreline. Panfish and all other species were collected during two transects covering 1.4 miles of shoreline. Walleyes were collected with six fyke nets checked daily for five nights and an electrofishing run sampling 3.3 miles of shoreline.

### BLUEGILL



A total of 323 bluegills were captured while surveying Long Lake. Lengths of measured bluegills varied between 2.0 inches and 8.2 inches, with a mean length of 6.1 inches. Forty-three percent of measured individuals were 6 inches or greater in Long Lake.

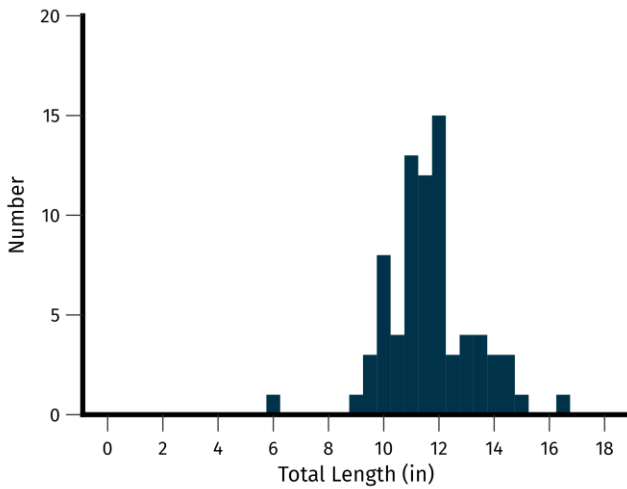
44.9 captured per mile $\geq$ 3 inches	
Quality size $\geq$ 6 inches	24.6 per mile
Preferred size $\geq$ 8 inches	2.2 per mile



## LARGEMOUTH BASS



A total of 76 largemouth bass were captured while surveying Long Lake. Lengths of measured largemouth bass varied between 6.2 inches and 16.8 inches, with a mean length of 11.7 inches. Three percent of measured individuals were 15 inches or greater in Long Lake. Too few previously marked largemouth bass were recaptured during the survey to generate a population estimate.

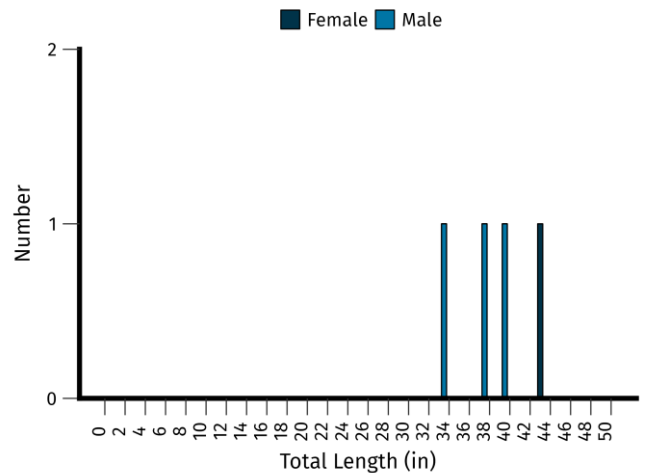


7.3 captured per mile $\geq$ 8 inches	
Quality size $\geq$ 12 inches	2.7 per mile
Preferred size $\geq$ 15 inches	0.2 per mile

## MUSKELLUNGE

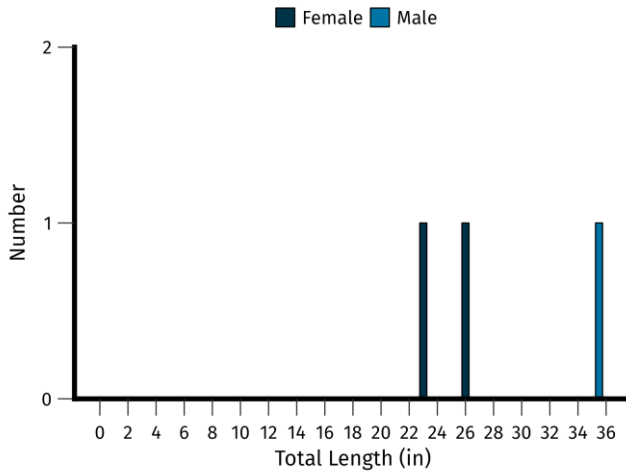


A total of four muskellunge were captured while surveying Long Lake (four during fyke netting, zero while electrofishing). Lengths of measured muskellunge varied from 33.4 inches to 42.8 inches, with a mean length of 42.8 inches. Caution should be applied when interpreting muskellunge size structure as a low number were captured. Too few previously marked muskellunge were recaptured during the survey to generate a population estimate.



0.2 captured per net night $\geq$ 20 inches	
Quality size $\geq$ 30 inches	0.2 per net night
Preferred size $\geq$ 38 inches	0.1 per net night

## NORTHERN PIKE



A total of three northern pike were captured while surveying Long Lake (three during fyke netting, zero while electrofishing). Lengths of measured northern pike varied between 18.6 inches and 36.0 inches, with a mean length of 24.5 inches. Caution should be applied when interpreting size structure as few individuals were captured. Recapturing too few previously marked northern pike prevented a population estimate from being generated.

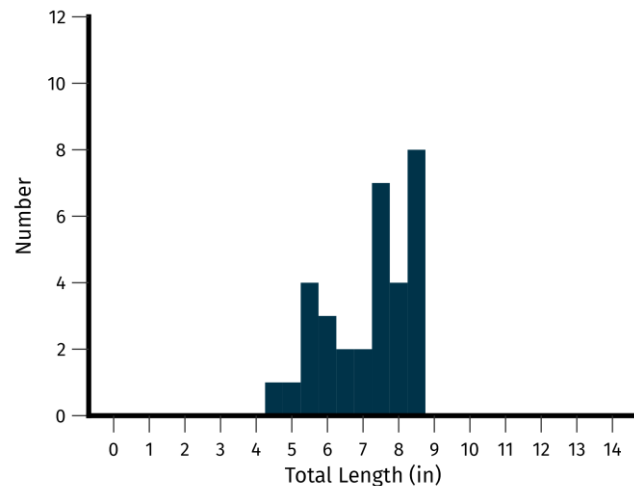
0.1 captured per net night $\geq 14$ inches	
Quality size $\geq 21$ inches	0.1 per net night
Preferred size $\geq 28$ inches	0.0 per net night

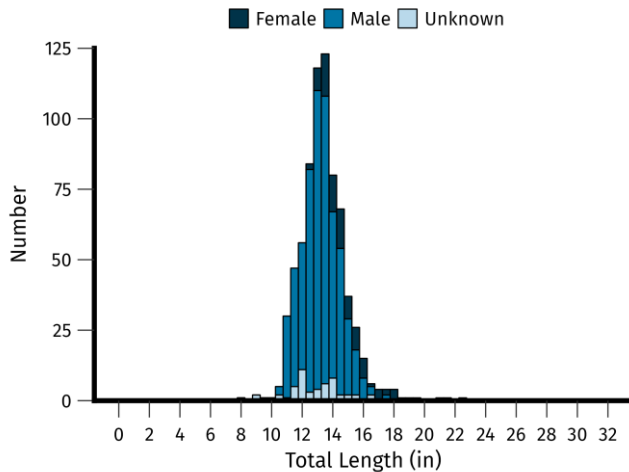
## ROCK BASS



A total of 169 rock bass were captured while surveying Long Lake. Lengths of measured rock bass varied between 4.5 inches and 8.6 inches, with a mean length of 7.2 inches. Sixty-two percent of individuals measured were 7 inches or greater in Long Lake.

12.3 captured per mile $\geq 4$ inches	
Quality size $\geq 7$ inches	7.2 per mile
Preferred size $\geq 9$ inches	0.0 per mile





## WALLEYE



A total of 718 walleyes were captured while surveying Long Lake, 189 of which had been captured previously. Lengths of measured individuals varied between 7.9 inches and 22.5 inches, with a mean length of 13.4 inches. Fourteen percent of measured walleyes were 15 inches or greater in Long Lake. Walleye length was on average 3 inches less than typical northern Wisconsin walleye across all ages. Walleye density was estimated to be 6.3/acre (717 individuals) in Long Lake. Walleye density is greater than the average density for reproducing (4.5/acre) and stocked (1.8/acre) fisheries in northern Wisconsin.

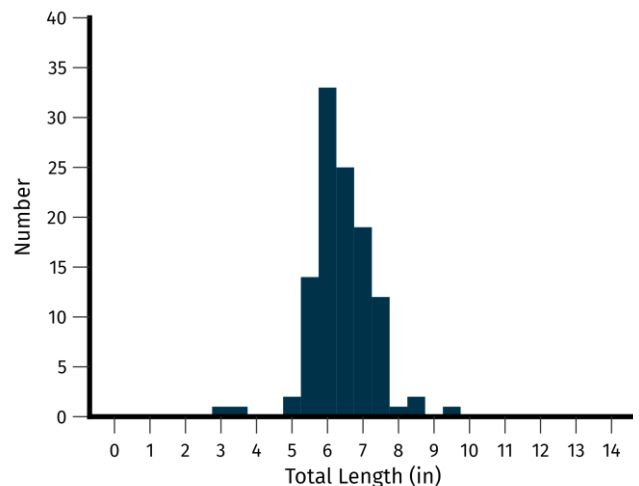
21.2 captured per net night $\geq$ 10 inches	
Quality Size $\geq$ 15 inches	2.3 Per Mile
Preferred Size $\geq$ 20 inches	0.0 Per Mile

## YELLOW PERCH



A total of 202 yellow perch were captured while surveying Long Lake. Lengths of measured yellow perch varied between 3.1 inches and 9.3 inches, with a mean length of 6.4 inches. Four percent of measured yellow perch were 8 inches or greater in Long Lake.

3.5 captured per net night $\geq$ 5 inches	
Quality Size $\geq$ 8 inches	0.1 per net night
Preferred Size $\geq$ 10 inches	0.0 per net night



## OTHER SPECIES

Other species encountered included bluntnose minnow (1), pumpkinseed (5), smallmouth bass (1), white sucker (2) and yellow bullhead (2).

## Summary

Long Lake is a complex-cool-clear lake with a mixed fishery accessible by a paved boat ramp on the north side of the lake off Doe Lane. Long Lake is one of the 27 lakes within Oneida County that is a part of the Wisconsin Stocking initiative. Walleye are surviving in Long Lake but growth is slow. Long Lake has soft water and low productivity, limiting nutrients within the system. A reduction in walleye stocking rate or frequency may improve walleye health.

Table 1. General fishing regulations for Long Lake, in Oneida Wisconsin.

SPECIES	SEASON DATES	DAILY BAG LIMIT	SIZE LIMIT
Largemouth bass	May to mid-June	5	14" minimum length
Largemouth bass and smallmouth bass	Mid-June to March	5	14" minimum length
Northern pike	May to March	5	No minimum length
Panfish	Open all year	25	No minimum length
Smallmouth bass	May to mid-June	Catch and release only	Catch and release only
Walleye	May to March	3, only 1 over 24"	15" minimum, 20-24" protected slot

## Acknowledgements

For answers to questions about fisheries management activities on Long Lake, contact:

### Nathan J. Lederman

Wisconsin Department of Natural Resources

107 Sutliff Ave

Rhineland, WI 54501

715-525-2898

nathaniel.lederman@wisconsin.gov