

WISCONSIN DEPARTMENT OF NATURAL RESOURCES

LAKE SUPERIOR STATE-LICENSED COMMERCIAL FISHERY REPORT 2024

DRAY CARL and SCOTT SAPPER

DNR Lake Superior Fisheries Management Team

BACKGROUND

The Wisconsin waters of Lake Superior are relatively shallow with a high degree of habitat complexity (e.g., Apostle Islands) compared to much of Lake Superior, and this habitat supports a highly productive ecosystem and successful commercial fishery. Over the past three decades, the Wisconsin Department of Natural Resources (DNR) has moved toward a smaller and better-regulated commercial fishery. Today, the lake whitefish and cisco (lake herring) fisheries comprise the majority of the catch and value of the Lake Superior commercial fishery, and these species are targeted using a combination of trap nets and gill nets. Since the reaffirmation of Treaty fishing rights in the Ceded Territory, the DNR has maintained a Lake Superior Fishing Agreement with both Red Cliff and Bad River Bands of Lake Superior Chippewa, which stipulates several management practices for fisheries in Wisconsin waters of Lake Superior. The Agreement includes methods for harvest limitations, commercial gear limitations, commercial fishing seasons, designated refuges, restricted-use areas, law enforcement patrols, commercial monitoring and exchange of data and information for all parties.

State-licensed commercial fishers in Wisconsin waters of Lake Superior primarily operate out of ports in Bayfield, Cornucopia and Port Wing. Commercial fishers report all harvest and fishing effort to the DNR, and in addition, team members collect fish biological data onboard commercial fishing vessels and dockside at commercial fishing facilities. Wisconsin commercial fishing management is built on three principles: limited entry, annual harvest and gear limitations, and individual transferable quotas.

Since 1997, there have been ten total licenses available for commercial fishing on Lake Superior. A commercial fishing license is required for any commercial fishing activity, which restricts the size of the commercial fleet (i.e., limited entry) and helps maintain the value of a commercial fishing license.

Commercial fishers are limited by how, when and where they can target and harvest Lake Superior fish. Three main types of gear are allowed in depths less than 330 feet: small-mesh gill nets, large-mesh gill nets and trap nets. Small-mesh gill nets are generally used to target cisco and chub species (deepwater ciscoes) and can be between 2 3/8-inch and 3-inch mesh size. Large-mesh gill nets are generally used to target lake whitefish and siscowet (fats) and can be 4 7/16-inch mesh size or greater. Trap nets are generally used to target lake whitefish and can be fished with the pot end of the net in 90 feet or shallower. Small-mesh gill nets may be fished all year. However, for other gear, the commercial fishing season is split into three periods: Period 1 (Nov. 28 to March 31), Period 2 (April 1 to May 31) and Period 3 (June 1 to Sept. 30). Large-mesh gill nets inside 330 feet are only allowed during these periods (i.e., excludes lake trout spawning season), and trap nets are only allowed in Periods 2 and 3. Rules also apply to the height of gill nets, how often nets should be checked or emptied, how nets should be marked and labeled and more. Pound nets (smaller, entrapment-style nets) and 1.5-inch gill nets are sometimes used for targeting rainbow smelt in the spring. Commercial fishing operations are prohibited within the boundaries of two large fishing refuges, Gull Island and Devils Island, and are either prohibited or limited within ten restricted-use areas (Figure 1).

The amount of harvest and targeted fishing effort is also limited for commercial fishing in the Wisconsin waters of Lake Superior. Fishers may only operate ten total trap nets at a time, and the amount of large-mesh gill net footage they are allowed to set annually is determined by lake trout quotas and catch rates observed by onboard commercial monitoring. This provides an incentive for commercial fishers to avoid catching lake trout in gill nets (more lake trout means less gill net footage is allowed in following years), ultimately creating an upper limit to the gill net harvest of other fish found in similar habitats, like lake whitefish. Lake whitefish have a minimum size limit of 17 inches. Lake trout must also be less than or equal to 25 inches to harvest out of trap nets. Annually, a total allowable catch (TAC) is set for lake trout in both management units (WI-1 and WI-2), which represents the maximum number of lake trout that can be harvested by all fisheries (i.e., commercial, recreational, home-use, assessment). One-third of the state (non-tribal) allotment of lake trout is allocated to commercial fishers, and each commercial fisher receives a specific number of individual lake trout jaw tags. When individual commercial fishers run out of either lake trout jaw tags or allocated gill net footage, they can not set any trap nets or large-mesh gill nets in depths less than 330 feet for the remainder of the commercial fishing season. Cisco harvest is limited with an annual TAC and commercial fishing quota. The TAC is determined using hydroacoustic survey estimates of cisco spawning stock biomass. Targeted commercial cisco harvest (defined as harvest between Oct. 1 and Dec. 31) is limited to the commercial fishing quota

and is monitored closely. A portion of the overall cisco TAC is set aside as an allowance for recreational harvest and commercial bycatch throughout the other times of the year. Total effort for large-mesh and small-mesh gill nets fished in depths greater than 330 feet is not regulated and may be fished at any time of the year.

Wisconsin state-licensed commercial fishing is managed using individual transferable quotas (ITQs). This is a common strategy in commercial fishing management and means that the total commercial fishing quota (e.g., lake trout, cisco) or total allowable large-mesh gill net footage is split evenly among the ten commercial fishing licenses. Afterward, fishers are free to trade or sell their individual shares to other license holders. This strategy avoids a derby-style fishery and produces a fishery that is safer for fishers, is more profitable and has a longer fishing season.

METHODS

This report only includes state-licensed commercial fishing effort and harvest. Daily harvest and effort (feet of gill net or trap net lifts) are reported by state-licensed commercial fishers. Additional information provided includes the area fished (reporting grids; Figure 1), gear specifications and depths fished.

All effort and harvest statistics were summarized by calendar year, with the exception of the lake trout harvest number and quota in Figure 5. The lake trout harvest number and quota in Figure 5 are summarized by fishing year, which runs from Nov. 28 to Sept. 30 of the following year and is used to track the harvest of the lake trout quota. Commercial fishers generally report harvest in dressed weight, and dressed weights are used in this report. Any harvest reported by commercial fishers as round weight was converted to dressed weight using known conversion factors for this report, with the exception of cisco eggs and rainbow smelt. Cisco harvest during the targeted cisco season (October–December) is tracked and reported in round weight in Figure 6 because the cisco quota is regulated with round weight.

Effort for gill nets is reported in total feet of net lifted. Effort for trap and pound nets is reported as the number of lifts, and a lift is defined as lifting and emptying the entire pot end of the net.

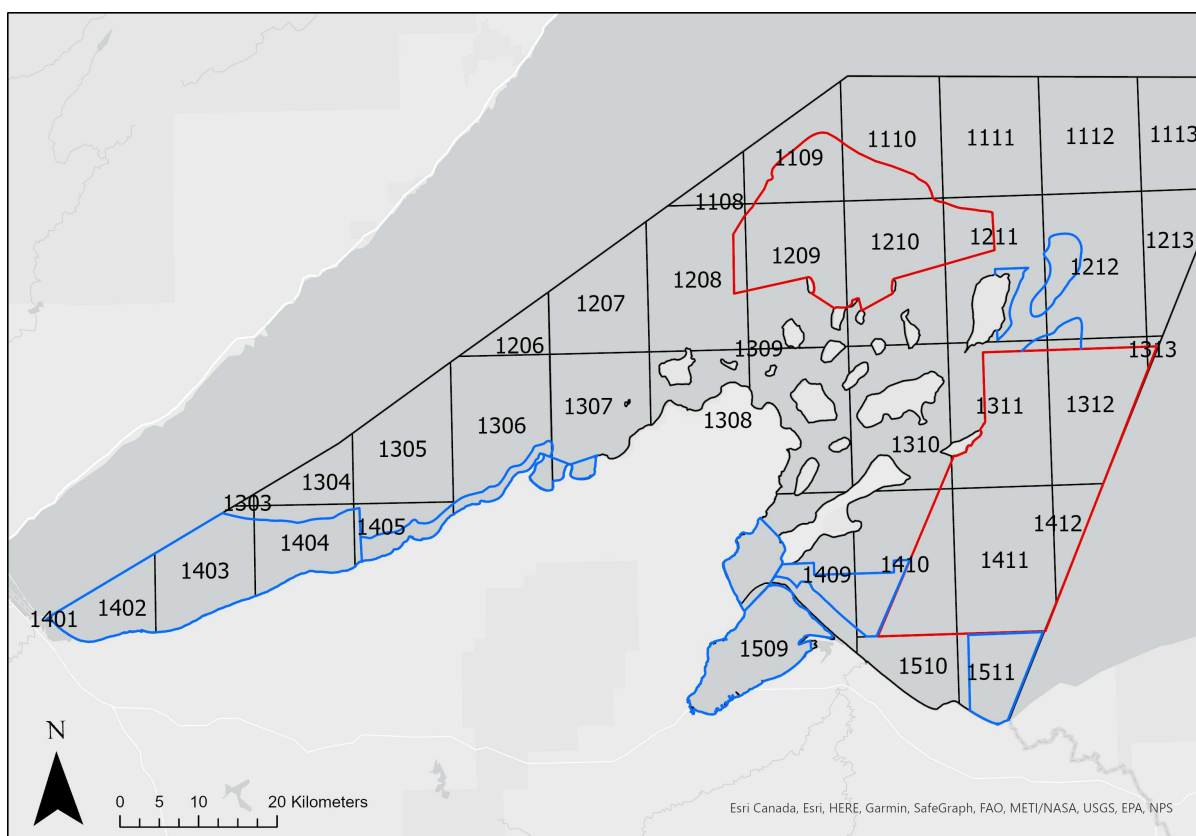


Figure 1. Wisconsin waters of Lake Superior and management units WI-1 (Western Arm) and WI-2 (Apostle Islands Region; line between Grid 1306 and 1307 separates units), reporting grids used for commercial harvest reporting (black lines and 4-digit numbers), fish refuges (commercial fishing prohibited, red lines) and restricted-use areas (commercial fishing prohibited or limited, blue lines).

RESULTS

During the 2024 calendar year, state-licensed commercial fishermen reported annual yields of 674,560 pounds of lake whitefish, 33,875 pounds of lake trout, 114,235 pounds of siscowet, 447,847 pounds of cisco, 3,074 pounds of cisco eggs, 53,997 pounds of chubs, 12,925 pounds of rainbow smelt and 4,008 pounds of burbot (Figure 2, Table 1).

Large-mesh gill net effort targeting lake whitefish (< 330 feet depth) totaled 1,571,850 feet and yielded 217,046 pounds of lake whitefish, 21,235 pounds of lake trout and 48,495 pounds of siscowet (Figures 3 and 4, Table 2). Large-mesh gill net effort targeting siscowet (> 330 feet depth) totaled 478,175 feet of gill net yielding 47,692 pounds (Figures 3 and 4, Table 3).

Small-mesh gill net effort targeting cisco (floated) totaled 627,950 feet and yielded 414,070 pounds of cisco and 3,010 pounds of cisco eggs (Figures 3 and 4, Table 4). Small-mesh gill net effort primarily targeting chubs (> 210 feet depth) totaled 1,454,700 feet and yielded 52,931 pounds of chubs, 29,356 pounds of cisco and 16,168 pounds of siscowet (Figures 3 and 4, Table 5).

State-licensed fishers made 790 trap net lifts, yielding 455,448 pounds of lake whitefish, 11,288 pounds of lake trout, 1,800 pounds of siscowet, 528 pounds of cisco and 2,474 pounds of burbot (Figures 3 and 4, Table 6). State-licensed fishers also made 13 pound net lifts yielding 12,900 pounds of rainbow smelt (Figures 3 and 4, Table 7).

Commercial fishers harvested 1,932 of the 4,000 lake trout quota in management unit WI-1 and 6,495 of the 7,500 lake trout quota in management unit WI-2 in 2024 (Figure 5). Commercial fishers also harvested 511,475 round pounds of the 850,000-pound cisco quota in 2024 (Figure 6).

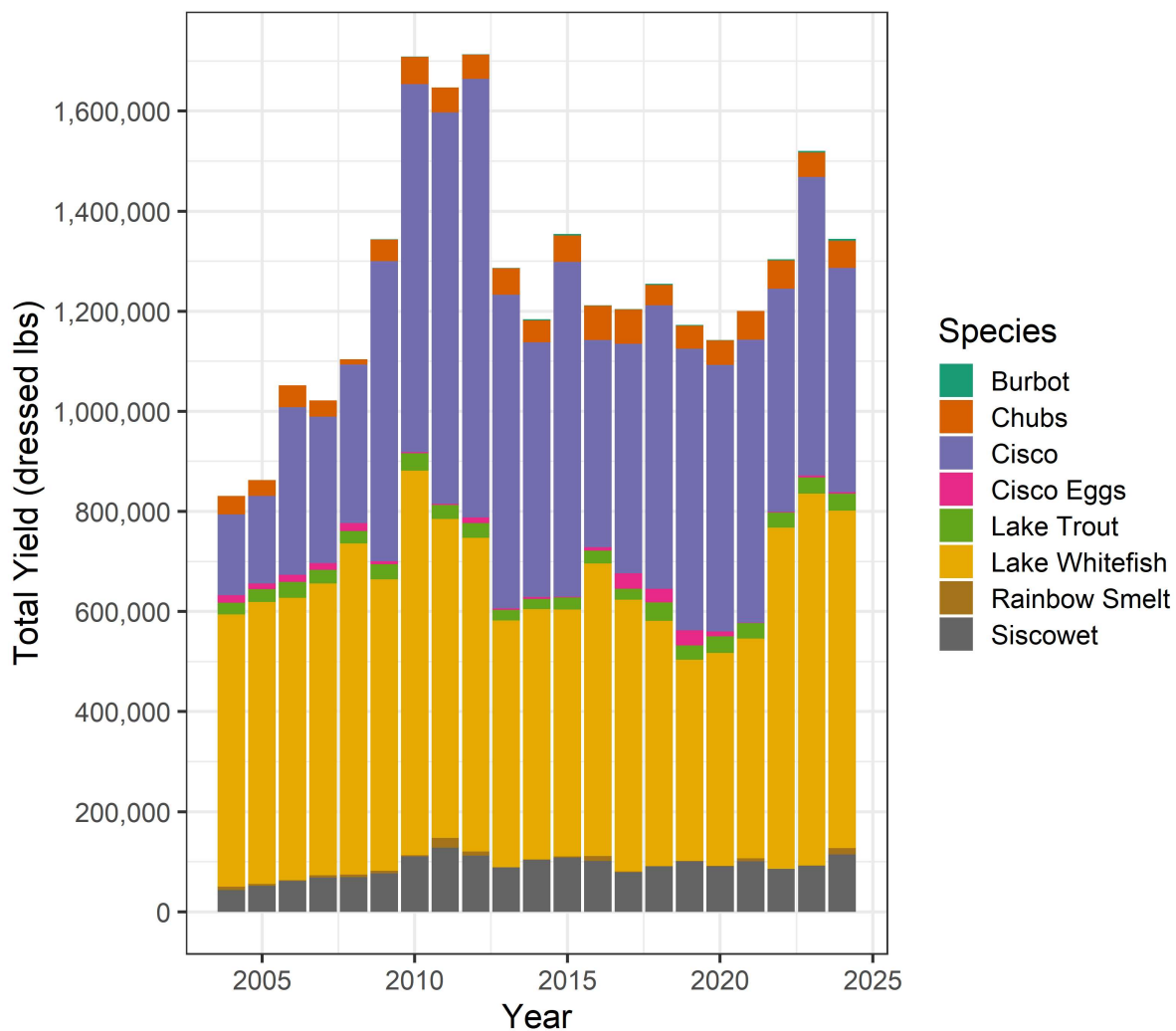


Figure 2. Total reported state-licensed commercial yield of the primary eight commercially viable species (represented by different colors) in Wisconsin waters of Lake Superior from 2004 to 2024 from all allowable gear types. Yield is expressed in dressed pounds, except for cisco eggs and rainbow smelt.

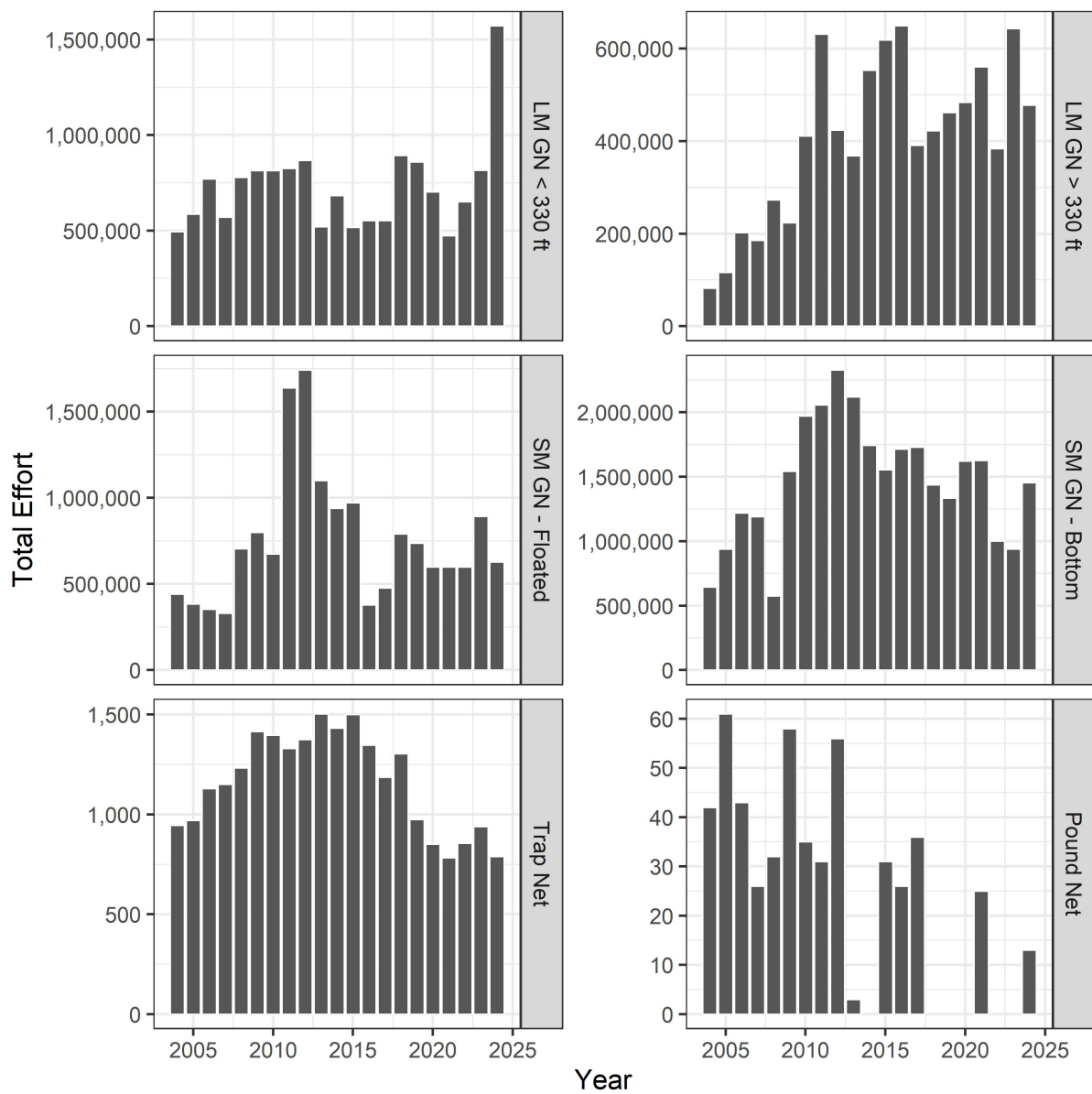


Figure 3. Total reported effort fished by state-licensed commercial fishers in Wisconsin waters of Lake Superior from 2004 to 2024 by gear categorization. Effort for large-mesh gill nets and small-mesh gill nets is represented in total footage of gill net, and effort for trap and pound nets is represented as number of lifts. A lift is defined as the act of lifting up and emptying the pot-end of the trap or pound net. Large-mesh gill net effort less than 330 feet is generally targeting lake whitefish, and large-mesh gill net effort greater than 330 feet is generally targeting siscowet. Small-mesh gill net effort is split between floated nets (targeting cisco in the fall) and bottom-set nets (targeting deepwater chubs > 210 feet).



Figure 4. Total reported state-licensed commercial yield of eight commercial species in Wisconsin waters of Lake Superior from 2004 to 2024. Colors represent the gear type used during yield (see Figure 3). Harvest is expressed in dressed pounds, except for cisco eggs and rainbow smelt.

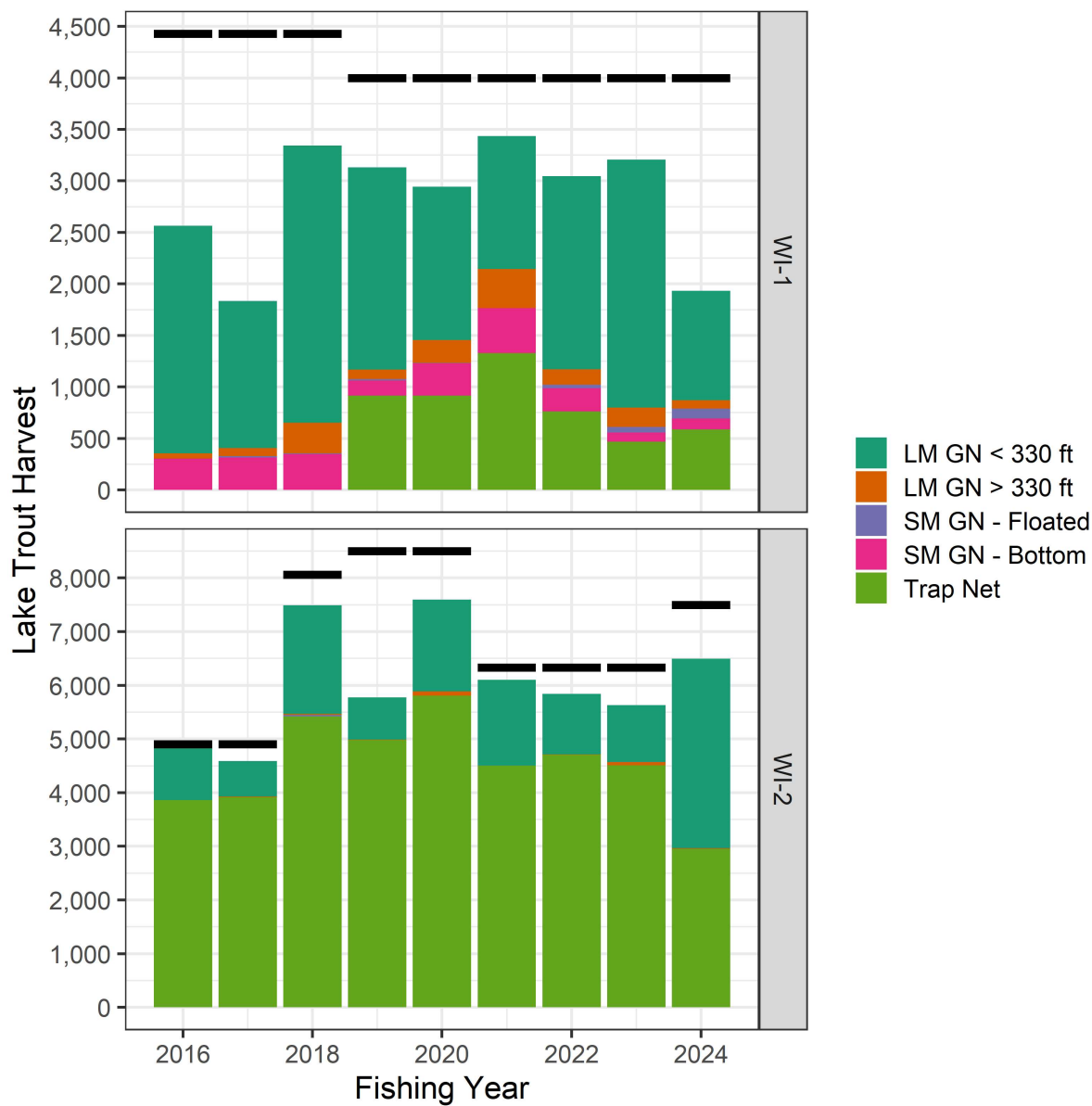


Figure 5. Total reported state-licensed commercial harvest of Lake Trout in Wisconsin waters of Lake Superior from fishing year 2016 (Nov. 28, 2015 - Sep. 30, 2016) to 2024 (Nov. 28, 2023 - Sep. 30, 2024) within each management unit. Harvest is expressed as the actual number of lake trout. Colors represent the gear type used during harvest. Black lines represent the quota allotted to the commercial fishery for each fishing year within each management unit.

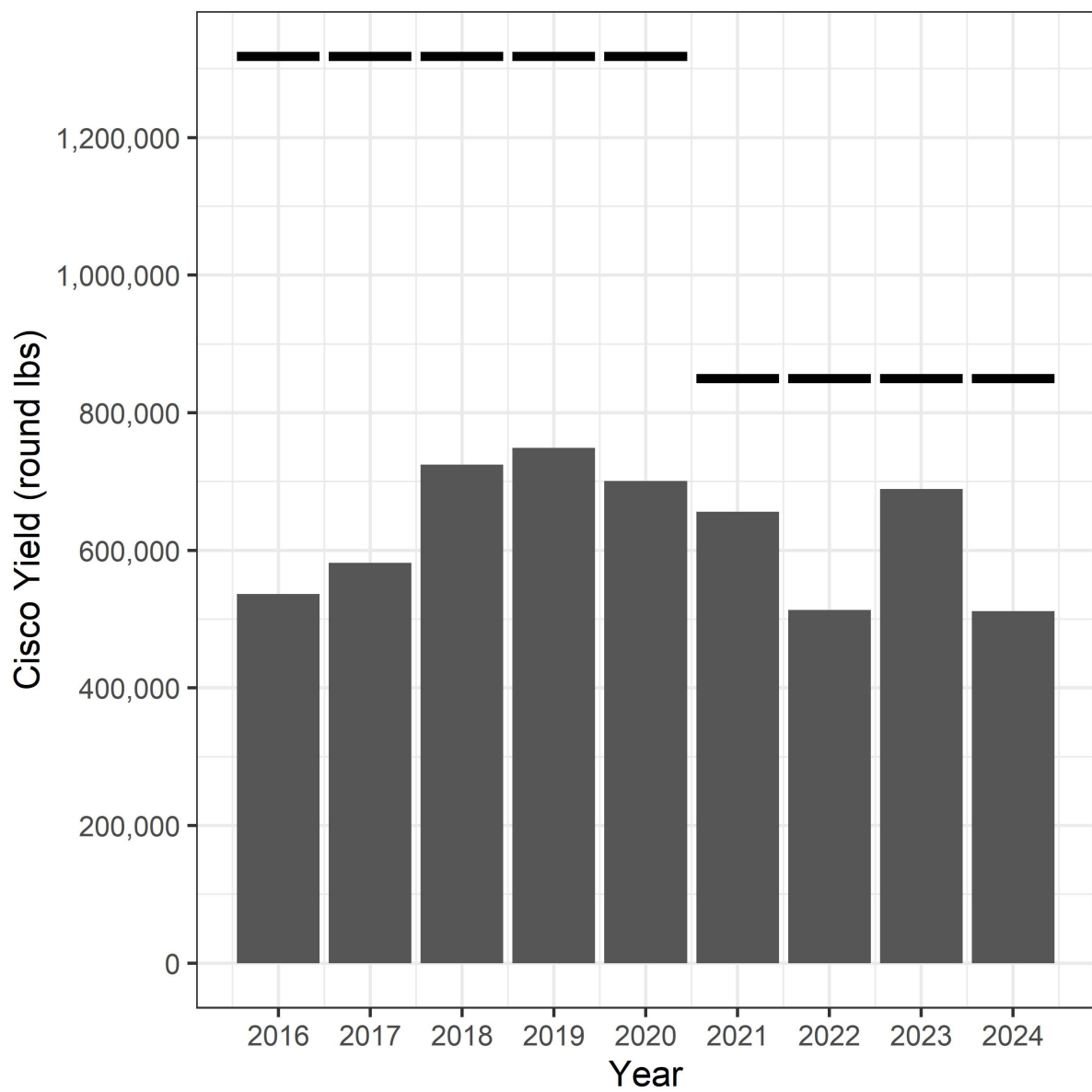


Figure 6. Total reported state-licensed commercial yield of cisco (lake herring) during the targeted cisco season (October to December) in Wisconsin waters of Lake Superior from 2016 (first year of quota) to 2024. Yield is expressed as round pounds of cisco. Black lines represent the quota allotted to the commercial fishery in a given year in round pounds.

Table 1. All Gears Total reported state-licensed commercial yield of lake whitefish, cisco (lake herring), lake trout, siscowet, chubs, cisco eggs (roe), rainbow smelt and burbot from all gear in Wisconsin waters of Lake Superior during the 2024 calendar year. All yield is expressed in dressed weight, except for cisco eggs and rainbow smelt. See Figure 1 for locations of statistical grids.

Gear	Month	Grid	Lake Whitefish	Cisco	Lake Trout	Siscowet	Chubs	Cisco Eggs	Rainbow Smelt	Burbot
All Gears	January	All Grids	53,626	7,041	3,120	12,082	287	--	3	393
	February	All Grids	16,989	5,016	1,225	15,809	3,635	--	3	129
	March	All Grids	26,538	3,512	2,826	3,279	4,774	--	--	80
	April	All Grids	9,299	3,050	1,408	7,974	6,758	--	12,917	293
	May	All Grids	23,018	1,607	1,995	8,482	6,165	--	--	286
	June	All Grids	82,945	1,096	4,001	14,063	2,885	--	1	318
	July	All Grids	187,616	238	5,588	13,881	341	--	--	308
	August	All Grids	166,961	131	4,646	13,152	1,153	--	1	843
	September	All Grids	87,717	98	7,120	7,145	1,914	--	--	687
	October	All Grids	--	580	--	6,625	15,552	--	--	123
	November	All Grids	--	218,217	--	3,889	10,510	1,380	--	262
	December	All Grids	19,850	207,262	1,946	7,854	23	1,694	--	285
	All Months	1206	--	--	15	500	3	--	--	--
		1207	--	1	34	7,429	29	--	--	--
		1208	48,043	165,676	3,174	13,709	474	--	--	82
		1209	211,683	18	6,303	2,745	--	--	--	519
		1210	19,587	4	4,079	486	--	--	--	130
		1211	14,618	--	1,527	120	--	--	--	16
		1304	42	1,996	3	3,002	18,213	29	--	194
		1305	9,477	59,460	1,898	46,959	31,529	3,045	7	483
		1306	42,264	4,710	4,916	25,880	3,644	--	--	523
		1307	112,359	153,639	3,548	5,048	58	--	12,916	974
		1308	114,592	52	2,150	452	--	--	--	653
		1309	23,779	3,448	515	260	--	--	--	138
		1310	31,997	56,602	3,227	5,706	33	--	1	79
		1311	2,212	--	430	654	3	--	--	--
		1405	3,224	1	1,122	1,048	9	--	1	26
		1409	35,470	2,239	227	162	2	--	--	166
		1410	5,214	--	707	75	--	--	--	22
		All Grids	674,560	447,847	33,875	114,235	53,997	3,074	12,925	4,008

Table 2. Large-Mesh Gill Net < 330 ft. Total reported state-licensed commercial effort (feet of gill net) and yield of lake whitefish, cisco (lake herring), lake trout, siscowet, chubs, rainbow smelt and burbot from large-mesh gill nets less than 330 feet in Wisconsin waters of Lake Superior during the 2024 calendar year. All yield is expressed in dressed weight, except for rainbow smelt. See Figure 1 for locations of statistical grids.

Gear	Month	Grid	Effort	Lake Whitefish	Cisco	Lake Trout	Siscowet	Chubs	Rainbow Smelt	Burbot
LM GN < 330 ft	January	1208	41,625	32,068	569	1,827	2,094	30	--	31
		1305	4,800	980	14	137	55	7	--	40
		1306	23,000	14,743	456	797	549	--	--	197
		1307	8,000	5,447	99	141	131	--	--	83
		All Grids	77,425	53,237	1,138	2,902	2,829	37	--	351
	February	1208	3,375	1,557	16	90	158	15	--	4
		1305	1,600	303	5	60	5	1	--	--
		1306	11,000	2,899	51	233	121	9	--	19
		1307	19,750	4,858	83	318	251	13	--	19
		1310	9,000	3,566	37	271	320	6	--	33
		1409	9,000	2,197	13	68	49	2	--	18
		All Grids	53,725	15,381	206	1,040	904	46	--	93
	March	1208	4,500	847	3	244	90	1	--	--
		1306	15,750	5,066	136	806	153	2	--	30
		1307	65,000	20,624	297	1,712	551	11	--	42
		All Grids	85,250	26,537	436	2,762	794	14	--	72
	April	1307	4,000	587	31	66	16	--	--	12
		1405	11,400	1,322	--	800	103	--	1	18
		All Grids	15,400	1,909	31	866	119	--	1	30
	May	1305	8,550	213	--	175	200	--	--	--
		1309	18,500	1,297	--	187	240	--	--	23
		1310	9,250	734	--	130	141	--	--	4
		1405	2,850	220	--	115	70	--	--	4
		1409	37,250	1,285	--	113	91	--	--	15

	All Grids	76,400	3,749	--	720	742	--	--	46
June	1208	5,000	262	1	118	150	1	--	--
	1209	38,775	4,314	--	489	280	--	--	--
	1211	4,000	82	--	26	37	--	--	2
	1305	32,300	669	--	106	2,497	36	--	--
	1306	57,475	2,460	--	307	2,860	38	--	--
	1307	2,250	174	--	--	20	--	--	--
	1309	1,750	10	--	--	--	--	--	--
	1310	139,700	7,939	3	1,120	3,321	19	1	26
	1311	1,875	196	--	79	174	1	--	--
	1405	5,700	120	1	135	140	1	--	--
	All Grids	288,825	16,226	5	2,380	9,479	96	1	28
July	1209	155,125	32,209	--	2,007	918	--	--	--
	1305	85,050	2,605	--	112	5,795	141	--	2
	1306	49,200	295	--	46	3,385	80	--	--
	1310	67,575	5,776	--	771	737	6	--	--
	1311	16,975	2,016	--	351	480	2	--	--
	1405	11,650	1,505	--	72	655	8	--	5
	1409	7,250	143	--	46	22	--	--	--
	1410	2,800	23	--	76	21	--	--	--
	All Grids	395,625	44,572	--	3,481	12,013	237	--	7
August	1209	82,125	10,397	--	903	472	--	--	--
	1305	100,050	4,220	--	165	6,308	103	1	25
	1306	55,000	205	--	44	4,135	106	--	2
	1310	101,800	13,702	--	935	1,187	2	--	17
	1405	3,200	57	--	--	80	--	--	--
	All Grids	342,175	28,581	--	2,047	12,182	211	1	44
September	1209	27,550	1,909	--	531	708	--	--	--
	1210	43,000	4,730	--	2,945	412	--	--	--
	1305	79,150	365	1	74	2,795	112	--	5
	1306	37,200	11	--	3	1,635	37	--	--
	1309	2,250	5	--	--	4	--	--	--
	All Grids	189,150	7,020	1	3,553	5,554	149	--	5
December	1208	25,875	11,720	1,178	891	2,731	--	--	47
	1305	1,000	75	5	5	5	--	--	8
	1306	21,000	8,039	609	588	1,143	1	--	194
	All Grids	47,875	19,834	1,792	1,484	3,879	1	--	249
All Months	1208	80,375	46,453	1,767	3,170	5,223	47	--	82
	1209	303,575	48,830	--	3,930	2,378	--	--	--
	1210	43,000	4,730	--	2,945	412	--	--	--
	1211	4,000	82	--	26	37	--	--	2
	1305	312,500	9,430	25	834	17,660	400	1	80
	1306	269,625	33,718	1,251	2,824	13,981	273	--	442
	1307	99,000	31,691	511	2,237	969	24	--	156
	1309	22,500	1,312	--	187	244	--	--	23
	1310	327,325	31,717	40	3,227	5,706	33	1	79
	1311	18,850	2,212	--	430	654	3	--	--
	1405	34,800	3,224	1	1,122	1,048	9	1	26
	1409	53,500	3,625	13	227	162	2	--	33
	1410	2,800	23	--	76	21	--	--	--
	All Grids	1,571,850	217,046	3,608	21,235	48,495	791	3	925

Table 3. Large-Mesh Gill Net > 330 ft. Total reported state-licensed commercial effort (feet of gill net) and yield of lake whitefish, cisco (lake herring), lake trout, siscowet, chubs, rainbow smelt and burbot from large-mesh gill nets greater than 330 feet in Wisconsin waters of Lake Superior during the 2024 calendar year. All yield is expressed in dressed weight, except for rainbow smelt. See Figure 1 for locations of statistical grids.

Gear	Month	Grid	Effort	Lake Whitefish	Cisco	Lake Trout	Siscowet	Chubs	Rainbow Smelt	Burbot
LM GN > 330 ft	January	1305	48,000	--	78	73	5,719	24	--	2
		1306	8,500	--	5	20	870	5	--	--
		1307	16,875	379	24	58	2,199	22	--	--
		All Grids	73,375	379	107	151	8,788	51	--	2
	February	1208	45,000	1,590	60	4	8,428	67	--	--
		1305	27,000	2	15	60	2,840	35	--	2
		1306	17,000	--	10	50	1,710	20	--	--
		1307	5,625	8	4	--	477	2	--	--
		All Grids	94,625	1,600	89	114	13,455	124	--	2
	March	1305	11,200	1	1	26	910	15	--	--

April	1206	5,625	--	--	15	500	3	--	--
	1207	61,875	--	--	12	4,903	21	--	--
	1306	5,625	--	4	40	339	5	--	--
	1307	11,250	--	--	6	943	10	--	--
	All Grids	84,375	--	4	73	6,685	39	--	--
May	1207	22,500	--	1	22	2,526	8	--	--
	1305	36,300	--	--	35	2,760	9	--	4
	All Grids	58,800	--	1	57	5,286	17	--	4
June	1305	14,400	--	--	9	890	5	--	--
	1306	27,600	--	--	14	2,515	1	--	--
	All Grids	42,000	--	--	23	3,405	6	--	--
July	1306	18,000	--	--	--	1,385	--	--	--
September	1305	6,850	2	--	5	238	2	--	--
October	1305	27,850	--	--	--	1,995	--	--	--
	1306	18,900	--	--	--	1,450	2	--	--
	All Grids	46,750	--	--	--	3,445	2	--	--
November	1305	3,000	--	2	--	350	2	--	--
December	1305	18,600	--	40	16	1,885	10	--	--
	1306	20,600	--	40	23	1,860	7	--	--
	All Grids	39,200	--	80	39	3,745	17	--	--
All Months	1206	5,625	--	--	15	500	3	--	--
	1207	84,375	--	1	34	7,429	29	--	--
	1208	45,000	1,590	60	4	8,428	67	--	--
	1305	193,200	5	136	224	17,587	102	--	7
	1306	116,225	--	59	147	10,129	40	--	--
	1307	33,750	387	28	64	3,619	34	--	--
	All Grids	478,175	1,982	284	488	47,692	275	--	7

Table 4. Small-Mesh Gill Net - Floated Total reported state-licensed commercial effort (feet of gill net) and yield of lake whitefish, cisco (lake herring), lake trout, siscowet, chubs, cisco eggs (roe), rainbow smelt and burbot from floated, small-mesh gill nets in Wisconsin waters of Lake Superior during the 2024 calendar year. All yield is expressed in dressed weight, except for cisco eggs and rainbow smelt. See Figure 1 for locations of statistical grids.

Gear	Month	Grid	Effort	Lake Whitefish	Cisco	Lake Trout	Siscowet	Chubs	Cisco Eggs	Rainbow Smelt	Burbot
SM GN - Floated	April	1306	2,400	--	1,624	--	--	--	--	--	--
	July	1306	2,550	--	20	--	5	--	--	--	--
		1307	2,550	--	24	--	11	--	--	--	--
		All Grids	5,100	--	44	--	16	--	--	--	--
	November	1208	151,750	--	120,597	--	58	--	--	--	--
		1304	2,000	--	200	--	--	--	18	--	--
		1305	48,000	--	14,690	--	6	--	1,344	--	--
		1307	86,350	--	54,706	--	--	--	--	--	--
		1309	4,000	--	875	--	--	--	--	--	--
		1310	80,000	--	23,170	--	--	--	--	--	--
		1409	7,000	--	1,839	--	--	--	--	--	--
		All Grids	379,100	--	216,077	--	64	--	1,362	--	--
	December	1208	40,600	--	42,202	--	--	--	--	--	--
		1305	52,000	2	19,842	369	--	--	1,648	--	--
		1307	91,750	--	98,340	--	--	--	--	--	--
		1309	5,000	--	2,550	--	--	--	--	--	--
		1310	52,000	--	33,392	--	--	--	--	--	--
		All Grids	241,350	2	196,326	369	--	--	1,648	--	--
	All Months	1208	192,350	--	162,798	--	58	--	--	--	--
		1304	2,000	--	200	--	--	--	18	--	--
		1305	100,000	2	34,532	369	6	--	2,992	--	--
		1306	4,950	--	1,644	--	5	--	--	--	--
		1307	180,650	--	153,070	--	11	--	--	--	--
		1309	9,000	--	3,425	--	--	--	--	--	--
		1310	132,000	--	56,562	--	--	--	--	--	--
		1409	7,000	--	1,839	--	--	--	--	--	--
		All Grids	627,950	2	414,070	369	80	--	3,010	--	--

Table 5. Small-Mesh Gill Net - Bottom Total reported state-licensed commercial effort (feet of gill net) and yield of lake whitefish, cisco (lake herring), lake trout, siscowet, chubs, cisco eggs (roe), rainbow smelt and burbot from bottom-set, small-mesh gill nets in Wisconsin waters of Lake Superior during the 2024 calendar year. All yield is expressed in dressed weight, except for cisco eggs and rainbow smelt. See Figure 1 for locations of statistical grids.

Gear	Month	Grid	Effort	Lake Whitefish	Cisco	Lake Trout	Siscowet	Chubs	Cisco Eggs	Rainbow Smelt	Burbot
SM GN - Bottom	January	1305	19,000	10	5,796	67	465	199	--	3	40
		1208	6,000	--	1,051	--	--	360	--	--	--
	February	1305	34,000	8	2,815	60	710	1,568	--	3	34
		1306	27,000	--	855	11	740	1,537	--	--	--
		All Grids	67,000	8	4,721	71	1,450	3,465	--	3	34
	March	1305	72,000	--	2,320	34	1,040	3,320	--	--	8
		1306	38,000	--	755	4	535	1,425	--	--	--
		All Grids	110,000	--	3,075	38	1,575	4,745	--	--	8
	April	1305	157,000	2	1,365	65	1,163	6,719	--	--	20
		1307	1,200	--	--	--	--	--	--	16	--
		All Grids	158,200	2	1,365	65	1,163	6,719	--	16	20
	May	1305	213,000	--	1,605	139	2,410	6,148	--	--	54
	June	1304	12,000	--	75	1	65	280	--	--	--
		1305	118,000	6	600	51	900	2,200	--	--	4
		1306	14,000	--	125	5	125	303	--	--	--
		All Grids	144,000	6	800	57	1,090	2,783	--	--	4
	July	1305	3,000	--	4	--	30	38	--	--	--
		1306	7,000	--	8	1	60	66	--	--	--
		All Grids	10,000	--	12	1	90	104	--	--	--
	August	1304	49,000	42	105	--	375	892	--	--	--
		1305	6,500	--	8	1	45	50	--	--	--
		All Grids	55,500	42	113	1	420	942	--	--	--
	September	1304	79,000	--	61	2	402	1,386	--	--	8
		1305	28,000	--	26	--	218	377	--	--	--
		All Grids	107,000	--	87	2	620	1,763	--	--	8
	October	1304	190,000	--	325	--	1,165	9,635	--	--	58
		1305	143,000	--	255	--	2,015	5,915	--	--	66
		All Grids	333,000	--	580	--	3,180	15,550	--	--	123
	November	1304	119,000	--	1,230	--	995	6,020	11	--	128
		1305	103,000	--	908	--	2,480	4,488	7	--	134
		All Grids	222,000	--	2,138	--	3,475	10,508	18	--	262
	December	1305	16,000	14	9,064	54	230	5	46	--	36
	All Months	1208	6,000	--	1,051	--	--	360	--	--	--
		1304	449,000	42	1,796	3	3,002	18,213	11	--	194
		1305	912,500	40	24,766	471	11,706	31,027	53	6	396
		1306	86,000	--	1,743	21	1,460	3,331	--	--	--
		1307	1,200	--	--	--	--	--	--	16	--
		All Grids	1,454,700	82	29,356	495	16,168	52,931	64	22	590

Table 6. Trap Nets Total reported state-licensed commercial effort (lifts) and yield of lake whitefish, cisco (lake herring), lake trout, siscowet, chubs, rainbow smelt and burbot from trap nets in Wisconsin waters of Lake Superior during the 2024 calendar year. All yield is expressed in dressed weight except rainbow smelt. See Figure 1 for locations of statistical grids.

Gear	Month	Grid	Effort	Lake Whitefish	Cisco	Lake Trout	Siscowet	Chubs	Rainbow Smelt	Burbot
Trap Net	April	1307	7	4,077	5	229	7	--	--	182
		1308	10	3,311	20	175	--	--	--	49
		All Grids	17	7,388	26	404	7	--	--	231
	May	1306	4	718	--	152	17	--	--	11
		1307	21	11,653	1	443	22	--	--	145
		1308	13	6,145	--	454	2	--	--	25
		1309	2	753	--	30	3	--	--	1
		All Grids	40	19,270	1	1,079	44	--	--	182
	June	1209	49	16,006	10	688	15	--	--	29
		1210	5	1,788	4	92	4	--	--	3
		1211	4	86	--	389	12	--	--	--
		1306	10	1,225	8	84	13	--	--	15
		1307	35	16,215	11	36	34	--	--	114

	1308	27	14,601	14	179	9	--	--	48
	1309	5	2,453	15	73	2	--	--	10
	1409	23	14,340	229	--	--	--	--	67
	All Grids	158	66,714	291	1,541	89	--	--	286
July	1209	55	44,918	4	486	76	--	--	56
	1210	8	2,951	--	518	17	--	--	9
	1211	12	2,816	--	624	57	--	--	9
	1306	10	4,387	1	283	67	--	--	21
	1307	41	27,119	7	53	61	--	--	61
	1308	36	36,597	6	80	99	--	--	71
	1309	9	10,295	7	62	--	--	--	29
	1409	24	13,960	157	--	--	--	--	45
	All Grids	195	143,043	182	2,106	377	--	--	301
August	1209	62	67,328	4	399	90	--	--	202
	1210	7	2,869	--	328	9	--	--	52
	1211	12	4,050	--	439	14	--	--	5
	1306	10	1,546	4	939	138	--	--	23
	1307	41	16,016	2	170	151	--	--	168
	1308	39	35,967	6	260	146	--	--	276
	1309	8	7,018	1	63	2	--	--	52
	1409	9	3,544	1	--	--	--	--	21
	All Grids	188	138,338	18	2,598	550	--	--	799
September	1209	56	34,602	--	800	186	--	--	232
	1210	8	7,250	--	196	44	--	--	66
	1211	17	7,584	--	49	--	--	--	--
	1306	10	670	--	466	70	--	--	11
	1307	34	5,200	4	316	174	--	--	136
	1308	41	17,970	6	1,002	196	--	--	184
	1309	8	1,949	--	100	9	--	--	23
	1310	7	280	--	--	--	--	--	--
	1410	11	5,191	--	631	54	--	--	22
	All Grids	192	80,695	10	3,560	733	--	--	674
All Months	1209	222	162,854	18	2,373	367	--	--	519
	1210	28	14,857	4	1,134	74	--	--	130
	1211	45	14,536	--	1,501	83	--	--	14
	1306	44	8,546	13	1,924	305	--	--	81
	1307	179	80,281	30	1,247	449	--	--	806
	1308	166	114,592	52	2,150	452	--	--	653
	1309	32	22,467	23	328	16	--	--	115
	1310	7	280	--	--	--	--	--	--
	1409	56	31,845	387	--	--	--	--	133
	1410	11	5,191	--	631	54	--	--	22
	All Grids	790	455,448	528	11,288	1,800	--	--	2,474

Table 7. Pound Nets Total reported state-licensed commercial effort (lifts) and yield of lake whitefish, cisco (lake herring), lake trout, siscowet, chubs, rainbow smelt and burbot from pound nets in Wisconsin waters of Lake Superior during the 2024 calendar year. All yield is expressed in dressed weight except rainbow smelt. See Figure 1 for locations of statistical grids.

Gear	Month	Grid	Effort	Lake Whitefish	Cisco	Lake Trout	Siscowet	Chubs	Rainbow Smelt	Burbot
Pound Net	April	1307	13	--	--	--	--	--	12,900	12
	All Months	1307	13	--	--	--	--	--	12,900	12