

WISCONSIN DEPARTMENT OF NATURAL RESOURCES

Wisconsin's 2023 Open Water Sportfishing Effort And Harvest From Lake Michigan And Green Bay

MAY 2024

WRITTEN BY

LAURA SCHMIDT

DNR Fisheries Management
Southern Lake Michigan Fisheries Work Unit
600 E. Greenfield Ave.
Milwaukee, WI 53204

OVERVIEW

The Wisconsin Department of Natural Resources (DNR) documented the sport fishery in Wisconsin waters of Lake Michigan and Green Bay from March 2023 through November 2023. Fishing effort, harvest and harvest rates were determined from 1) a stratified-random creel survey of launched-boat, pier, shore and stream anglers; 2) a randomized mail survey of moored-boat anglers; and 3) mandatory charter-boat reporting. For a detailed description of methods, see Eggold, 1995.

RESULTS

Anglers spent an estimated 2,485,275 hours fishing on Lake Michigan and Green Bay during 2023, with boat-angler effort at 2,094,621 hours or 84% of the total hours. The estimated angler hours for the pier fishery were 95,521 hours, 54,689 angler hours for the shore fishery and 240,444 hours for the stream fishery. Fishing effort during 2023 was within 1% of the ten-year average.

The estimated harvest of 545,841 fish was dominated by walleye (132,393) and Chinook salmon (130,811) followed by yellow perch (99,994). The combined walleye and yellow perch harvest was 43% of the total estimated harvest. Chinook salmon harvest made up 24% of the total estimated harvest. The boat fishery, comprised of launched-boat, moored-boat and charter-boat anglers, dominated the fishery by harvesting an estimated 493,572 fish or 90% of the total harvest and was led by Chinook salmon (116,111), followed by walleye (111,375). Pier anglers harvested 6,252 fish, primarily yellow perch (2,327), followed by coho salmon (2,085). Stream anglers harvested 41,876 fish, dominated by walleye (20,764) and followed by Chinook salmon (13,095). Shore anglers harvested 4,061 fish, primarily yellow perch (1,735), followed by coho salmon (1,037).

Overall harvest rates were highest for walleye at 0.0533 fish/hour, followed closely by Chinook salmon (0.0526 fish/hour) and yellow perch (0.0402 fish/hour). These three species have had the highest harvest rates for the past five years.

The 2023 Chinook harvest of 130,811 fish was the highest Chinook harvest on record since 2016 and approximately 23% above the ten-year average. Chinook harvest has increased in Wisconsin waters of Lake Michigan every year since 2019. The overall harvest rate for salmonids in 2022 was 0.1201, which is 6% above the ten-year average harvest rate.

Coho harvest in 2023 was 87,792 fish. Although this was lower harvest than 2022, it remained approximately 14% higher than the ten-year average and higher than harvest in 2019, 2020, and 2021. The 2023 rainbow trout harvest of 47,322 increased from 2022 and was approximately 20% below the ten-year average. Brown trout harvest in 2023 was 6,963 fish, 52% below the ten-year average. A total of 25,580 lake trout were harvested in 2023, an increase from 2022, but approximately 12% below the ten-year average. A total of 60 brook trout were harvested in 2023. Brook trout have been stocked in two Lake Michigan tributaries since 2020.

The 2023 harvest of yellow perch in Green Bay was 97,641, a decrease from 2022 but still above the ten-year average harvest. The Lake Michigan yellow perch harvest in 2023 was 2,353, a decrease from 2022. Perch harvest in Lake Michigan remains on an overall downward trend observed since 1993.

In 2023, the standard weight of a 30-inch Chinook was 9.9 pounds, which was approximately 3% below the ten-year average. There was not much change from 2022, when the standard weight of a 30-inch Chinook was 9.6 pounds. The standard weight of a 23-inch coho was 3.4 pounds, which was approximately 16% below the ten-year average. The standard weight of a 25-inch rainbow trout was 3.6 pounds, which was 12% below the ten-year average. The standard weight of a 27-inch lake trout was 5.8 pounds, a slight decrease from 2022.

REFERENCES

Eggold, B.T. 1995. Wisconsin's 1995 open water sportfishing effort and catch from Lake Michigan and Green Bay. Wisconsin Department of Natural Resources, Plymouth, Wisconsin. 18 pages.

Table 1. Estimated angler effort (hours) by location in Wisconsin waters of Lake Michigan and Green Bay during March through December of 2014 through 2023*. Standard deviations are in italics.

Location	2014	2015	2016	2017	2018	2019	2020	2021	2022	2023	Average
Kenosha Co.	129,736 <i>5,422</i>	101,058 <i>4,990</i>	108,874 <i>5,432</i>	90,700 <i>3,810</i>	92,655 <i>4,185</i>	99,315 <i>4,417</i>	91,284 <i>4,797</i>	113,635 <i>7,514</i>	87,191 <i>4,069</i>	90,693 <i>4,210</i>	100,514 <i>4,991</i>
Racine Co.	122,082 <i>7,073</i>	102,948 <i>9,243</i>	106,901 <i>7,928</i>	95,490 <i>6,787</i>	110,575 <i>11,954</i>	98,387 <i>6,374</i>	78,832 <i>6,721</i>	93,231 <i>5,784</i>	95,394 <i>8,166</i>	88,754 <i>6,386</i>	99,259 <i>7,836</i>
Milwaukee Co.	255,140 <i>10,894</i>	267,451 <i>10,279</i>	295,517 <i>12,743</i>	267,191 <i>14,736</i>	233,031 <i>13,192</i>	180,123 <i>8,028</i>	179,950 <i>10,877</i>	217,505 <i>8,552</i>	194,492 <i>12,092</i>	182,456 <i>16,513</i>	227,286 <i>12,053</i>
Ozaukee Co.	189,524 <i>9,532</i>	172,896 <i>8,481</i>	215,153 <i>13,880</i>	179,360 <i>13,185</i>	167,683 <i>10,435</i>	156,411 <i>10,337</i>	160,473 <i>8,465</i>	175,610 <i>9,436</i>	194,123 <i>14,724</i>	141,007 <i>9,100</i>	175,224 <i>10,979</i>
Sheboygan Co.	214,111 <i>10,191</i>	216,378 <i>11,974</i>	210,632 <i>11,803</i>	179,246 <i>9,027</i>	163,946 <i>9,813</i>	176,289 <i>16,500</i>	148,393 <i>9,720</i>	175,574 <i>10,928</i>	213,660 <i>12,679</i>	153,181 <i>10,139</i>	185,141 <i>11,463</i>
Manitowoc Co.	187,654 <i>9,404</i>	168,961 <i>8,303</i>	183,440 <i>10,233</i>	139,241 <i>7,010</i>	141,366 <i>8,009</i>	132,408 <i>6,735</i>	141,855 <i>12,574</i>	157,011 <i>9,201</i>	162,635 <i>9,750</i>	160,820 <i>9,796</i>	157,539 <i>9,244</i>
Kewaunee Co.	352,498 <i>15,032</i>	367,149 <i>15,581</i>	288,935 <i>13,131</i>	318,589 <i>13,337</i>	327,150 <i>13,794</i>	222,088 <i>9,598</i>	236,238 <i>11,413</i>	255,212 <i>11,511</i>	248,542 <i>13,922</i>	290,840 <i>18,614</i>	290,724 <i>13,800</i>
E. Door Co.	172,324 <i>8,761</i>	218,354 <i>19,796</i>	204,769 <i>10,839</i>	193,014 <i>9,108</i>	187,941 <i>10,802</i>	181,342 <i>12,741</i>	127,333 <i>10,704</i>	200,707 <i>11,516</i>	161,460 <i>11,385</i>	153,592 <i>8,969</i>	180,084 <i>11,855</i>
Green Bay	990,101 <i>46,164</i>	1,127,400 <i>36,334</i>	1,016,928 <i>35,232</i>	1,087,056 <i>40,209</i>	1,032,530 <i>34,218</i>	1,115,720 <i>38,818</i>	799,727 <i>30,260</i>	1,345,874 <i>43,556</i>	1,131,789 <i>41,711</i>	1,223,932 <i>41,376</i>	1,087,106 <i>39,053</i>
Total Effort	2,613,170 <i>53,991</i>	2,742,595 <i>49,548</i>	2,631,149 <i>47,145</i>	2,549,887 <i>49,597</i>	2,456,877 <i>45,624</i>	2,362,083 <i>48,065</i>	1,964,085 <i>40,880</i>	2,734,359 <i>51,171</i>	2,489,286 <i>52,586</i>	2,485,275 <i>52,457</i>	2,502,877 <i>49,245</i>

*Note: Sport fishing estimates for 2020 are for May – December only.

Table 2. Estimated harvest and total harvest rate (number per hour, all anglers combined) of salmonids in Wisconsin waters of Lake Michigan and Green Bay during March through December of 2014 through 2023*. Standard deviations are in italics.

Species	2014	2015	2016	2017	2018	2019	2020	2021	2022	2023	Average
Coho Salmon	52,297 <i>6,577</i>	41,067 <i>4,339</i>	125,748 <i>5,572</i>	119,788 <i>7,135</i>	85,459 <i>5,176</i>	32,197 <i>2,003</i>	40,349 <i>2,585</i>	80,009 <i>4,716</i>	104,692 <i>6,842</i>	87,792 <i>11,700</i>	77,054 <i>4,784</i>
Chinook Salmon	130,231 <i>3,562</i>	114,528 <i>3,549</i>	138,110 <i>4,725</i>	84,163 <i>3,132</i>	84,228 <i>3,262</i>	63,043 <i>4,012</i>	80,890 <i>3,782</i>	100,323 <i>3,552</i>	120,148 <i>4,701</i>	130,811 <i>5,486</i>	106,047 <i>4,603</i>
Rainbow Trout	72,724 <i>2,259</i>	59,127 <i>1,714</i>	77,004 <i>2,962</i>	66,599 <i>2,661</i>	57,141 <i>2,011</i>	50,258 <i>3,105</i>	54,430 <i>1,996</i>	58,597 <i>2,814</i>	35,304 <i>1,644</i>	47,322 <i>3,245</i>	58,961 <i>2,452</i>
Brown Trout	23,511 <i>1,813</i>	20,335 <i>1,894</i>	23,885 <i>2,632</i>	20,404 <i>1,715</i>	12,625 <i>1,116</i>	8,013 <i>969</i>	3,317 <i>519</i>	9,178 <i>1,742</i>	9,013 <i>1,276</i>	6,963 <i>1,548</i>	14,733 <i>1,642</i>
Brook Trout	0 <i>0</i>	0 <i>0</i>	0 <i>0</i>	0 <i>0</i>	0 <i>0</i>	0 <i>0</i>	0 <i>0</i>	0 <i>0</i>	8 <i>0</i>	60 <i>23</i>	1 <i>0</i>
Lake Trout	25,424 <i>1,098</i>	35,778 <i>1,482</i>	19,046 <i>865</i>	20,345 <i>1,115</i>	26,747 <i>1,236</i>	34,197 <i>2,438</i>	38,271 <i>1,645</i>	40,145 <i>1,859</i>	23,067 <i>1,216</i>	25,580 <i>1,346</i>	29,027 <i>1,470</i>
Total Harvest	304,187 <i>8,104</i>	270,835 <i>6,285</i>	383,793 <i>8,356</i>	311,299 <i>8,484</i>	266,200 <i>6,652</i>	187,708 <i>6,052</i>	217,257 <i>5,286</i>	288,252 <i>7,019</i>	292,232 <i>8,644</i>	298,528 <i>13,481</i>	282,029 <i>8,133</i>
Harvest-Rate	0.1164	0.0988	0.1459	0.1221	0.1083	0.0795	0.1106	0.1054	0.1174	0.1201	0.1127

*Note: Sport fishing estimates for 2020 are for May – December only.

Table 3. Estimated harvest and total harvest rate (number per hour, all anglers combined) of yellow perch in Wisconsin waters of Lake Michigan and Green Bay during March through December of 2014 through 2023*. Standard deviations are in italics.

Location	2014	2015	2016	2017	2018	2019	2020	2021	2022	2023	Average
Green Bay	117,012 <i>12,283</i>	98,263 <i>10,029</i>	76,281 <i>9,289</i>	117,412 <i>12,404</i>	115,896 <i>11,044</i>	84,200 <i>15,389</i>	253,278 <i>21,751</i>	258,025 <i>19,871</i>	151,037 <i>13,538</i>	97,641 <i>10,118</i>	149,051 <i>15,794</i>
Harvest-Rate	0.1182	0.0872	0.0750	0.1080	0.1122	0.0755	0.3167	0.1917	0.1334	0.0798	0.1481
Lake Michigan	9,277 <i>1,108</i>	5,257 <i>1,000</i>	2,089 <i>586</i>	2,481 <i>537</i>	4,026 <i>787</i>	3,600 <i>882</i>	2,013 <i>674</i>	3,676 <i>1,232</i>	5,843 <i>2,336</i>	2,353 <i>400</i>	5,033 <i>1,123</i>
Harvest-Rate	0.0057	0.0033	0.0013	0.0017	0.0028	0.0029	0.0017	0.0026	0.0043	0.0019	0.0028
Total Harvest	126,289 <i>12,333</i>	103,520 <i>10,079</i>	78,370 <i>9,307</i>	119,893 <i>12,416</i>	119,922 <i>11,072</i>	87,800 <i>15,414</i>	255,291 <i>21,761</i>	261,701 <i>19,909</i>	156,880 <i>13,738</i>	99,994 <i>10,125</i>	140,966 <i>14,198</i>
Harvest-Rate	0.0483	0.0377	0.0298	0.0470	0.0488	0.0372	0.1300	0.0957	0.0630	0.0402	0.0578

Note: Table 3 reflects that some Door County sites represent Green Bay for yellow perch harvest statistics.

*Note: Sport Fishing estimates for 2020 are for May – December only.

Table 4. Estimated harvest-rate (harvest per hour), harvest and effort for all survey areas and **ALL FISHERY TYPES** for Wisconsin waters of Lake Michigan and Green Bay during 2023. Standard deviations are in italics.

Species	Harvest per hour	March/April	May	June	July	August	Sept/Oct	Nov/Dec	Season
Coho Salmon	0.0353	4,362 <i>1,055</i>	24,324 <i>2,266</i>	39,300 <i>11,328</i>	12,922 <i>1,230</i>	3,811 <i>586</i>	3,073 <i>689</i>	0 <i>0</i>	87,792 <i>11,700</i>
Chinook Salmon	0.0526	26 <i>16</i>	4,808 <i>685</i>	33,927 <i>3,406</i>	48,833 <i>3,092</i>	19,054 <i>1,213</i>	24,163 <i>2,646</i>	0 <i>0</i>	130,811 <i>5,486</i>
Rainbow Trout	0.0190	2,795 <i>585</i>	5,037 <i>972</i>	18,685 <i>2,807</i>	12,668 <i>844</i>	6,817 <i>784</i>	1,259 <i>190</i>	61 <i>0</i>	47,322 <i>3,245</i>
Brown Trout	0.0028	4,286 <i>1,399</i>	246 <i>72</i>	97 <i>17</i>	1,858 <i>644</i>	166 <i>56</i>	295 <i>128</i>	15 <i>0</i>	6,963 <i>1,276</i>
Brook Trout	0.0000	37 <i>0</i>	0 <i>0</i>	0 <i>0</i>	0 <i>0</i>	0 <i>0</i>	23 <i>23</i>	0 <i>0</i>	60 <i>23</i>
Lake Trout	0.0103	45 <i>21</i>	1,551 <i>261</i>	8,960 <i>861</i>	7,749 <i>347</i>	5,253 <i>862</i>	2,022 <i>372</i>	0 <i>0</i>	25,580 <i>1,346</i>
Northern Pike	0.0016	1,116 <i>698</i>	1,016 <i>470</i>	1,011 <i>667</i>	330 <i>167</i>	120 <i>98</i>	493 <i>193</i>	0 <i>0</i>	4,086 <i>1,108</i>
White Perch	0.0027	0 <i>0</i>	955 <i>499</i>	333 <i>209</i>	886 <i>849</i>	4,230 <i>2,776</i>	364 <i>350</i>	0 <i>0</i>	6,768 <i>2,974</i>
Smallmouth Bass	0.0016	0 <i>0</i>	564 <i>281</i>	1,412 <i>440</i>	1,644 <i>561</i>	389 <i>237</i>	63 <i>50</i>	0 <i>0</i>	4,072 <i>804</i>
Yellow Perch	0.0402	8 <i>8</i>	1,096 <i>488</i>	5,771 <i>1,252</i>	29,820 <i>7,419</i>	17,709 <i>3,166</i>	44,266 <i>5,912</i>	1,324 <i>839</i>	99,994 <i>10,125</i>
Walleye	0.0533	29,595 <i>11,829</i>	28,200 <i>4,349</i>	1,715 <i>475</i>	56,918 <i>8,673</i>	12,697 <i>2,377</i>	2,771 <i>746</i>	497 <i>202</i>	132,393 <i>15,509</i>
Total Harvest	0.2196	42,270	67,797	111,211	173,628	70,246	78,792	1,897	545,841
Angler Hours		<i>11,993</i>	<i>5,131</i>	<i>12,289</i>	<i>11,985</i>	<i>5,160</i>	<i>6,583</i>	<i>863</i>	<i>23,124</i>
		326,087 <i>27,821</i>	392,186 <i>21,034</i>	408,132 <i>22,853</i>	628,781 <i>23,214</i>	344,151 <i>16,098</i>	375,694 <i>14,600</i>	10,244 <i>1,348</i>	2,485,275 <i>52,457</i>

Table 5. Estimated harvest-rate (harvest per hour), harvest and effort for the **BOAT FISHERY** with all surveys combined for Wisconsin waters of Lake Michigan and Green Bay during 2023. Standard deviations are in italics.

Species	Harvest per hour	March/April	May	June	July	August	Sept/Oct	Nov/Dec	Season
Coho Salmon	0.0399	3,061	23,619	39,103	12,332	3,798	1,758	0	83,671
		<i>965</i>	<i>2,254</i>	<i>11,327</i>	<i>1,215</i>	<i>586</i>	<i>476</i>	<i>0</i>	<i>11,678</i>
Chinook Salmon	0.0554	26	4,791	33,905	48,167	18,890	10,332	0	116,111
		<i>16</i>	<i>685</i>	<i>3,406</i>	<i>3,081</i>	<i>1,212</i>	<i>1,901</i>	<i>0</i>	<i>5,162</i>
Rainbow Trout	0.0212	62	5,013	18,676	12,645	6,808	1,061	61	44,326
		<i>31</i>	<i>972</i>	<i>2,807</i>	<i>844</i>	<i>784</i>	<i>133</i>	<i>0</i>	<i>3,189</i>
Brown Trout	0.0031	3,851	205	95	1,858	153	260	15	6,437
		<i>1,374</i>	<i>64</i>	<i>17</i>	<i>644</i>	<i>55</i>	<i>125</i>	<i>0</i>	<i>1,525</i>
Brook Trout	0.0000	0	0	0	0	0	0	0	0
		<i>0</i>	<i>0</i>	<i>0</i>	<i>0</i>	<i>0</i>	<i>0</i>	<i>0</i>	<i>0</i>
Lake Trout	0.0122	45	1,551	8,952	7,749	5,253	2,022	0	25,572
		<i>21</i>	<i>261</i>	<i>861</i>	<i>347</i>	<i>862</i>	<i>372</i>	<i>0</i>	<i>1,346</i>
Northern Pike	0.0017	802	1,014	1,011	330	120	266	0	3,543
		<i>648</i>	<i>470</i>	<i>667</i>	<i>167</i>	<i>98</i>	<i>148</i>	<i>0</i>	<i>1,071</i>
White Perch	0.0022	0	233	36	886	3,484	0	0	4,639
		<i>0</i>	<i>232</i>	<i>36</i>	<i>849</i>	<i>2,736</i>	<i>0</i>	<i>0</i>	<i>2,874</i>
Smallmouth Bass	0.0017	0	507	1,144	1,584	389	18	0	3,642
		<i>0</i>	<i>278</i>	<i>414</i>	<i>560</i>	<i>237</i>	<i>18</i>	<i>0</i>	<i>787</i>
Yellow Perch	0.0450	0	1,046	5,115	28,176	16,040	43,173	706	94,256
		<i>0</i>	<i>485</i>	<i>1,240</i>	<i>7,413</i>	<i>3,130</i>	<i>5,902</i>	<i>623</i>	<i>10,087</i>
Walleye	0.0532	9,035	28,200	1,697	56,918	12,678	2,407	440	111,375
		<i>2,392</i>	<i>4,349</i>	<i>475</i>	<i>8,673</i>	<i>2,377</i>	<i>722</i>	<i>200</i>	<i>10,310</i>
Total Harvest	0.2356	16,882	66,179	109,734	170,645	67,613	61,297	1,222	493,572
		<i>2,994</i>	<i>5,106</i>	<i>12,284</i>	<i>11,977</i>	<i>5,116</i>	<i>6,276</i>	<i>654</i>	<i>19,885</i>
Angler Hours		216,604	364,693	378,866	588,248	317,537	222,947	5,726	2,094,621
		<i>23,553</i>	<i>20,935</i>	<i>22,645</i>	<i>22,944</i>	<i>15,978</i>	<i>13,079</i>	<i>1,148</i>	<i>49,598</i>

Table 6. Estimated harvest-rate (harvest per hour), harvest and effort for the **PIER FISHERY** with all survey areas combined for Wisconsin waters of Lake Michigan and Green Bay during 2023. Standard deviations are in italics.

Species	Harvest per hour	March/April	May	June	July	August	Sept/Oct	Nov/Dec	Season
Coho Salmon	0.0218	581 <i>241</i>	460 <i>158</i>	197 <i>105</i>	590 <i>191</i>	13 <i>13</i>	244 <i>141</i>	0 <i>0</i>	2,085 <i>388</i>
Chinook Salmon	0.0135	0 <i>0</i>	0 <i>0</i>	22 <i>14</i>	666 <i>259</i>	164 <i>58</i>	433 <i>147</i>	0 <i>0</i>	1,285 <i>304</i>
Rainbow Trout	0.0004	0 <i>0</i>	0 <i>0</i>	9 <i>8</i>	23 <i>20</i>	9 <i>9</i>	0 <i>0</i>	0 <i>0</i>	41 <i>23</i>
Brown Trout	0.0009	34 <i>21</i>	41 <i>33</i>	2 <i>2</i>	0 <i>0</i>	13 <i>14</i>	0 <i>0</i>	0 <i>0</i>	90 <i>41</i>
Brook Trout	0.0000	0 <i>0</i>	0 <i>0</i>	0 <i>0</i>	0 <i>0</i>	0 <i>0</i>	0 <i>0</i>	0 <i>0</i>	0 <i>0</i>
Lake Trout	0.0001	0 <i>0</i>	0 <i>0</i>	8 <i>7</i>	0 <i>0</i>	0 <i>0</i>	0 <i>0</i>	0 <i>0</i>	8 <i>7</i>
Northern Pike	0.0004	0 <i>0</i>	0 <i>0</i>	0 <i>0</i>	0 <i>0</i>	0 <i>0</i>	35 <i>16</i>	0 <i>0</i>	35 <i>16</i>
White Perch	0.0002	0 <i>0</i>	0 <i>0</i>	0 <i>0</i>	0 <i>0</i>	0 <i>0</i>	20 <i>19</i>	0 <i>0</i>	20 <i>19</i>
Smallmouth Bass	0.0011	0 <i>0</i>	57 <i>45</i>	0 <i>0</i>	50 <i>31</i>	0 <i>0</i>	0 <i>0</i>	0 <i>0</i>	107 <i>55</i>
Yellow Perch	0.0244	0 <i>0</i>	0 <i>0</i>	478 <i>155</i>	907 <i>308</i>	712 <i>300</i>	230 <i>197</i>	0 <i>0</i>	2,327 <i>498</i>
Walleye	0.0027	254 <i>168</i>	0 <i>0</i>	0 <i>0</i>	0 <i>0</i>	0 <i>0</i>	0 <i>0</i>	0 <i>0</i>	254 <i>168</i>
Total Harvest	0.0655	869 <i>295</i>	558 <i>168</i>	716 <i>188</i>	2,236 <i>447</i>	911 <i>306</i>	962 <i>284</i>	0 <i>0</i>	6,252 <i>725</i>
Angler Hours		5,812 <i>922</i>	9,369 <i>1,378</i>	12,971 <i>1,337</i>	28,958 <i>3,284</i>	15,859 <i>1,582</i>	22,552 <i>2,125</i>	0 <i>0</i>	95,521 <i>4,726</i>

Table 7. Estimated harvest-rate (harvest per hour), harvest and effort for the **SHORE FISHERY** with all survey areas combined for Wisconsin waters of Lake Michigan and Green Bay during 2023. Standard deviations are in italics.

Species	Harvest per hour	March/April	May	June	July	August	Sept/Oct	Nov/Dec	Season
Coho Salmon	0.0190	720 <i>353</i>	245 <i>172</i>	0 <i>0</i>	0 <i>0</i>	0 <i>0</i>	72 <i>67</i>	0 <i>0</i>	1,037 <i>398</i>
Chinook Salmon	0.0059	0 <i>0</i>	17 <i>19</i>	0 <i>0</i>	0 <i>0</i>	0 <i>0</i>	303 <i>103</i>	0 <i>0</i>	320 <i>105</i>
Rainbow Trout	0.0012	34 <i>24</i>	0 <i>0</i>	0 <i>0</i>	0 <i>0</i>	0 <i>0</i>	31 <i>26</i>	0 <i>0</i>	65 <i>35</i>
Brown Trout	0.0039	215 <i>237</i>	0 <i>0</i>	0 <i>0</i>	0 <i>0</i>	0 <i>0</i>	0 <i>0</i>	0 <i>0</i>	215 <i>237</i>
Brook Trout	0.0000	0 <i>0</i>	0 <i>0</i>	0 <i>0</i>	0 <i>0</i>	0 <i>0</i>	0 <i>0</i>	0 <i>0</i>	0 <i>0</i>
Lake Trout	0.0000	0 <i>0</i>	0 <i>0</i>	0 <i>0</i>	0 <i>0</i>	0 <i>0</i>	0 <i>0</i>	0 <i>0</i>	0 <i>0</i>
Northern Pike	0.0075	271 <i>256</i>	2 <i>2</i>	0 <i>0</i>	0 <i>0</i>	0 <i>0</i>	138 <i>118</i>	0 <i>0</i>	411 <i>281</i>
White Perch	0.0000	0 <i>0</i>	0 <i>0</i>	0 <i>0</i>	0 <i>0</i>	0 <i>0</i>	0 <i>0</i>	0 <i>0</i>	0 <i>0</i>
Smallmouth Bass	0.0051	0 <i>0</i>	0 <i>0</i>	268 <i>148</i>	10 <i>6</i>	0 <i>0</i>	0 <i>0</i>	0 <i>0</i>	278 <i>148</i>
Yellow Perch	0.0317	0 <i>0</i>	0 <i>0</i>	178 <i>83</i>	737 <i>0</i>	258 <i>170</i>	0 <i>0</i>	562 <i>561</i>	1,735 <i>592</i>
Walleye	0.0000	0 <i>0</i>	0 <i>0</i>	0 <i>0</i>	0 <i>0</i>	0 <i>0</i>	0 <i>0</i>	0 <i>0</i>	0 <i>0</i>
Total Harvest	0.0743	1,240 <i>497</i>	264 <i>173</i>	446 <i>170</i>	747 <i>6</i>	258 <i>170</i>	544 <i>172</i>	562 <i>561</i>	4,061 <i>823</i>
Angler Hours		7,521 <i>1,065</i>	5,872 <i>940</i>	4,298 <i>610</i>	6,739 <i>991</i>	5,232 <i>836</i>	24,854 <i>2,173</i>	173 <i>173</i>	54,689 <i>2,970</i>

Table 8. Estimated harvest-rate (harvest per hour), harvest and effort for the **STREAM FISHERY** with all survey areas combined for Wisconsin waters of Lake Michigan and Green Bay during 2023. Standard deviations are in italics.

Species	Harvest per hour	March/April	May	June	July	August	Sept/Oct	Nov/Dec	Season
Coho Salmon	0.0042	0 <i>0</i>	0 <i>0</i>	0 <i>0</i>	0 <i>0</i>	0 <i>0</i>	999 <i>473</i>	0 <i>0</i>	999 <i>451</i>
Chinook Salmon	0.0545	0 <i>0</i>	0 <i>0</i>	0 <i>0</i>	0 <i>0</i>	0 <i>0</i>	13,095 <i>1,831</i>	0 <i>0</i>	13,095 <i>1,831</i>
Rainbow Trout	0.0120	2,699 <i>584</i>	24 <i>18</i>	0 <i>0</i>	0 <i>0</i>	0 <i>0</i>	167 <i>133</i>	0 <i>0</i>	2,890 <i>599</i>
Brown Trout	0.0009	186 <i>118</i>	0 <i>0</i>	0 <i>0</i>	0 <i>0</i>	0 <i>0</i>	35 <i>24</i>	0 <i>0</i>	221 <i>121</i>
Brook Trout	0.0002	37 <i>0</i>	0 <i>0</i>	0 <i>0</i>	0 <i>0</i>	0 <i>0</i>	23 <i>23</i>	0 <i>0</i>	60 <i>23</i>
Lake Trout	0.0000	0 <i>0</i>	0 <i>0</i>	0 <i>0</i>	0 <i>0</i>	0 <i>0</i>	0 <i>0</i>	0 <i>0</i>	0 <i>0</i>
Northern Pike	0.0004	43 <i>29</i>	0 <i>0</i>	0 <i>0</i>	0 <i>0</i>	0 <i>0</i>	54 <i>38</i>	0 <i>0</i>	97 <i>48</i>
White Perch	0.0089	0 <i>0</i>	722 <i>442</i>	297 <i>206</i>	0 <i>0</i>	746 <i>472</i>	264 <i>350</i>	0 <i>0</i>	2,129 <i>764</i>
Smallmouth Bass	0.0002	0 <i>0</i>	0 <i>0</i>	0 <i>0</i>	0 <i>0</i>	0 <i>0</i>	45 <i>46</i>	0 <i>0</i>	45 <i>46</i>
Yellow Perch	0.0070	8 <i>8</i>	50 <i>53</i>	0 <i>0</i>	0 <i>0</i>	699 <i>325</i>	863 <i>280</i>	56 <i>34</i>	1,676 <i>433</i>
Walleye	0.0864	20,306 <i>11,583</i>	0 <i>0</i>	18 <i>19</i>	0 <i>0</i>	19 <i>12</i>	364 <i>186</i>	57 <i>29</i>	20,764 <i>11,585</i>
Total Harvest	0.1742	23,279 <i>11,598</i>	796 <i>446</i>	315 <i>207</i>	0 <i>0</i>	1,464 <i>573</i>	15,909 <i>1,958</i>	113 <i>45</i>	41,876 <i>11,786</i>
Angler Hours		96,150 <i>14,740</i>	12,252 <i>1,167</i>	11,997 <i>2,702</i>	4,836 <i>822</i>	5,523 <i>806</i>	105,341 <i>5,733</i>	4,345 <i>684</i>	240,444 <i>16,143</i>

Table 9. Average weight, average length and standard weight of salmonids from Wisconsin's Lake Michigan creel survey during 2013 through 2023, all areas and fishery types combined. std = standard deviation.

Year	Average Weight (lbs.)	± 1 Std	Average Length (in.)	± 1 Std	Standard Weight (lbs.)
Coho Salmon					
2013	5.3848	2.6743	23.6931	3.4848	4.0654
2014	3.9803	1.9275	21.2898	3.0179	3.9316
2015	4.0000	1.8299	21.4375	3.3676	3.8470
2016	4.7300	1.9033	23.3117	2.6028	3.9260
2017	4.0892	2.1177	22.4113	2.6747	3.6520
2018	4.7184	2.5656	22.0095	3.8256	4.2930
2019	6.5305	2.8447	23.3983	3.3888	4.4539
2021	3.6335	1.6999	20.8590	2.3806	4.2560
2022	6.4098	3.0389	24.8315	3.7971	4.4371
2023	2.8773	1.5352	19.3353	2.9078	3.3743
Chinook Salmon					
2013	10.4966	7.0121	28.1742	6.7792	10.2408
2014	11.3915	5.0015	30.0012	4.8944	10.2321
2015	10.4108	4.5165	29.7477	5.4302	9.1940
2016	10.3154	6.0139	28.1910	5.9369	10.3142
2017	11.8211	6.0754	29.6128	5.8775	10.4097
2018	13.1493	7.0864	30.6361	6.6760	10.0109
2019	13.0167	8.0081	29.9058	6.2441	10.9404
2021	11.5833	7.3158	28.7720	6.9710	10.6334
2022	11.9323	6.2615	29.4304	6.5854	9.5772
2023	12.3257	5.0424	31.4328	4.9419	9.9060
Rainbow Trout					
2013	6.4838	2.6676	25.5596	3.7736	4.0376
2014	6.7767	2.8838	25.9776	3.8120	4.1739
2015	5.7588	2.4129	25.2419	4.4224	3.9037
2016	5.8938	2.5324	24.7988	3.8542	4.2855
2017	6.5706	2.7022	25.8441	4.0113	4.0464
2018	6.4566	2.9929	25.6198	4.1660	3.7403
2019	7.8170	4.6551	25.1044	4.2576	4.3547
2021	6.8752	3.3082	25.3329	3.8655	4.4091
2022	6.6421	2.8727	24.8947	3.7643	4.5692
2023	6.2648	3.1368	25.7086	4.4061	3.5942
Brown Trout					
2013	5.8537	3.0350	22.0303	3.6793	3.9190
2014	5.8459	3.3608	21.2050	4.6428	4.2392
2015	5.1532	3.1955	20.9572	4.3664	3.8568
2016	5.3826	4.0422	20.7914	5.2190	3.9606
2017	5.7685	3.2424	21.9807	3.9553	3.9659
2018	6.1024	3.8362	22.9790	4.4280	3.4505
2019	10.7946	5.2367	25.5988	3.9499	5.4836
2021	7.3147	4.6425	23.2017	5.2133	3.9345
2022	5.2743	4.0971	22.0500	4.8082	3.2207
2023	5.7174	3.8343	22.8522	4.4171	3.2599
Lake Trout					
2013	5.8791	2.7630	25.0904	3.1524	5.3559
2014	6.3332	3.4466	24.7813	4.0396	5.8595
2015	7.4777	3.7718	26.8174	4.1894	5.6124
2016	6.6598	3.4108	25.7354	3.8402	5.8303
2017	6.7796	3.3955	25.8882	3.9219	5.6707
2018	8.4836	4.4129	27.2497	4.0781	6.0765
2019	10.1448	5.9126	27.3294	4.4485	6.3484
2021	7.4925	5.9333	25.1929	4.7050	5.8878
2022	7.8774	4.3128	25.8641	4.2673	6.2779
2023	6.5764	2.6762	25.6774	2.9184	5.7983

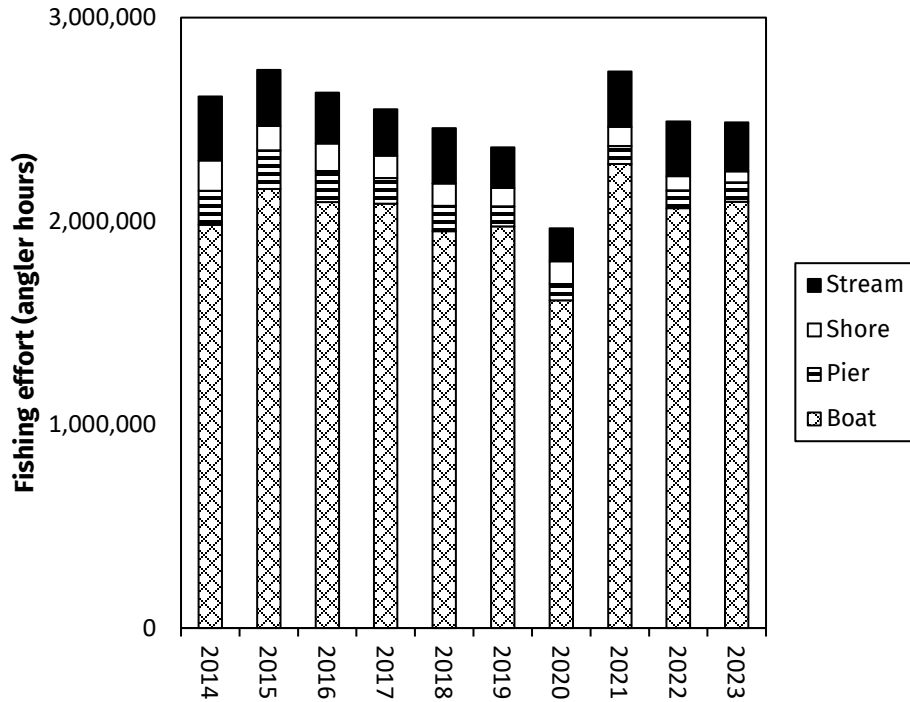


Figure 1. Fishing effort (angler hours) in Wisconsin waters of Lake Michigan and Green Bay from 2014 through 2023. *Note: Sport Fishing estimates for 2020 are for May – December only.

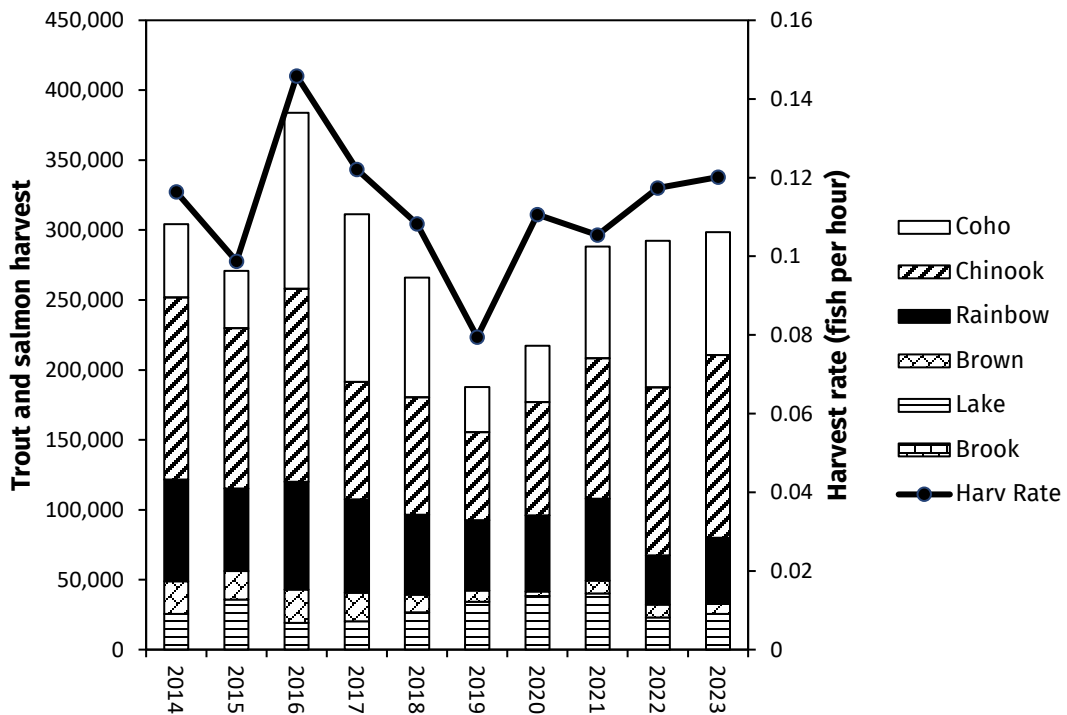


Figure 2. Trout and salmon harvest and harvest rate from Wisconsin waters of Lake Michigan and Green Bay from 2014 through 2023. *Note: Sport fishing estimates for 2020 are for May – December only.

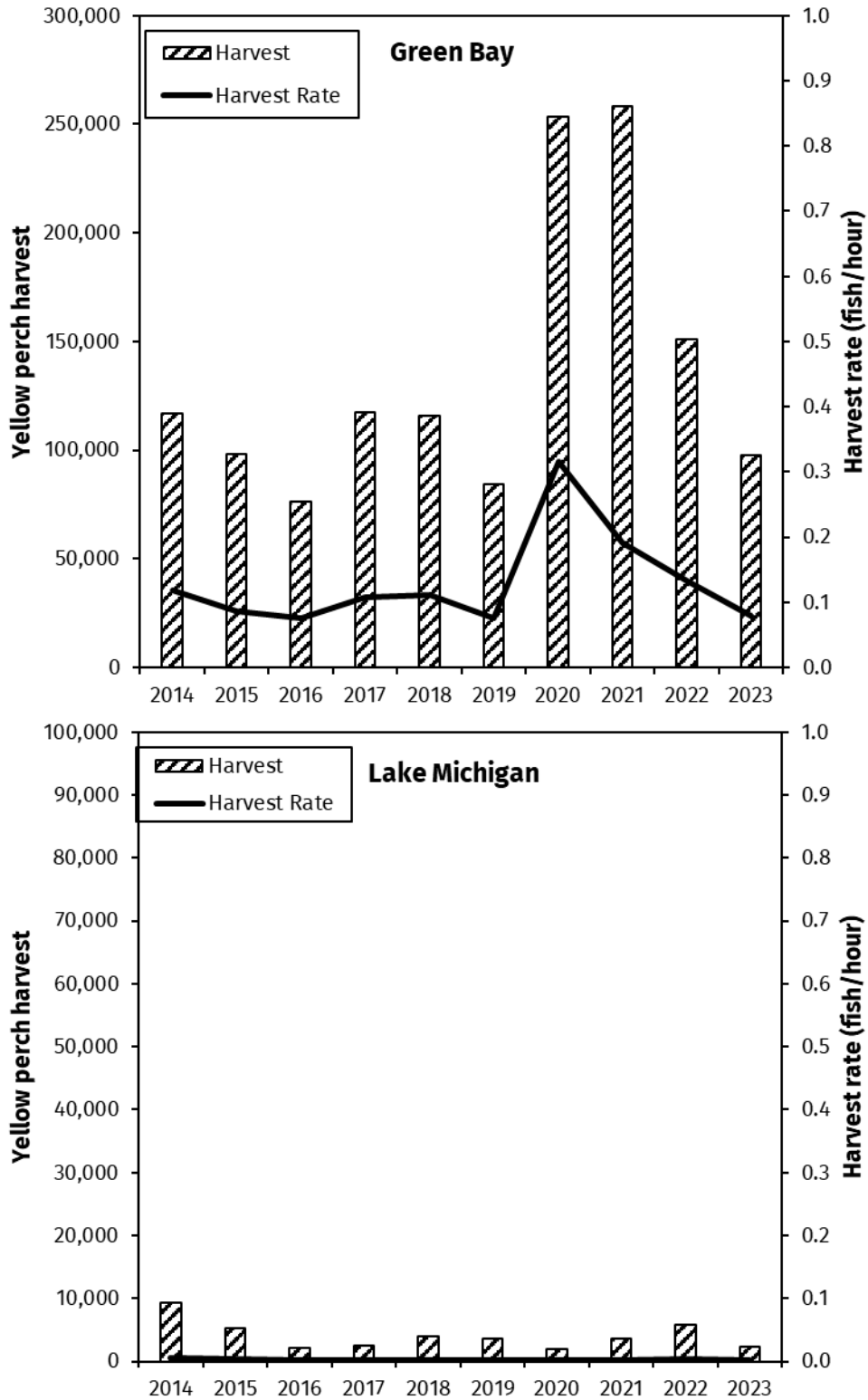


Figure 3. Yellow perch angler-harvest and harvest rate from Wisconsin waters of Green Bay and Lake Michigan from 2014 through 2023. Note: Figure 3 reflects that some Door County sites represent Green Bay for yellow perch harvest statistics. *Note: Sport fishing estimates for 2020 are for May – December only.