

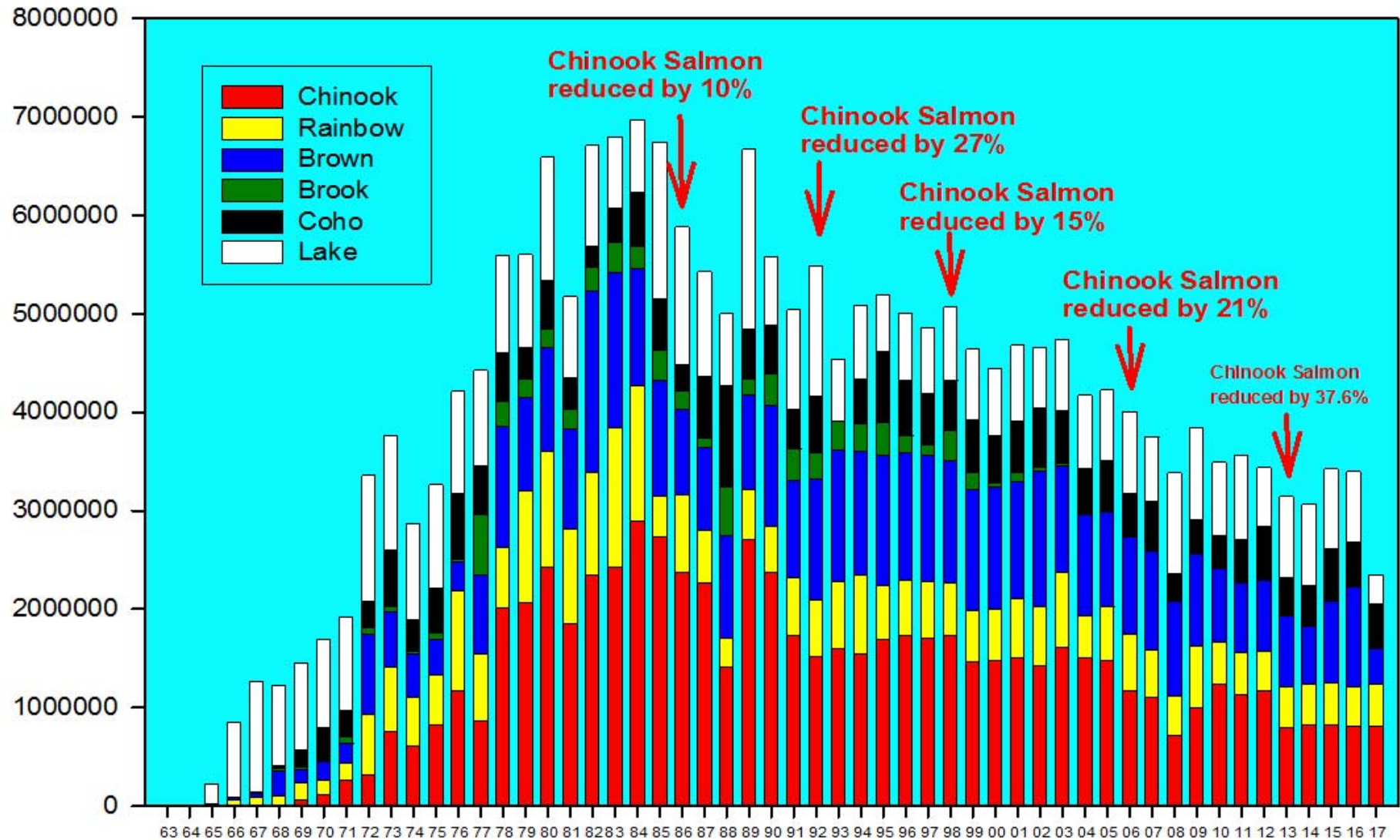
# Lake Michigan Fisheries Forum Meeting April 2018



**FISHERIES MANAGEMENT..... we make fishing better**



# Lake Michigan Salmon and Trout Stocking, 1969 - 2017



# Salmon and trout stocking strategy

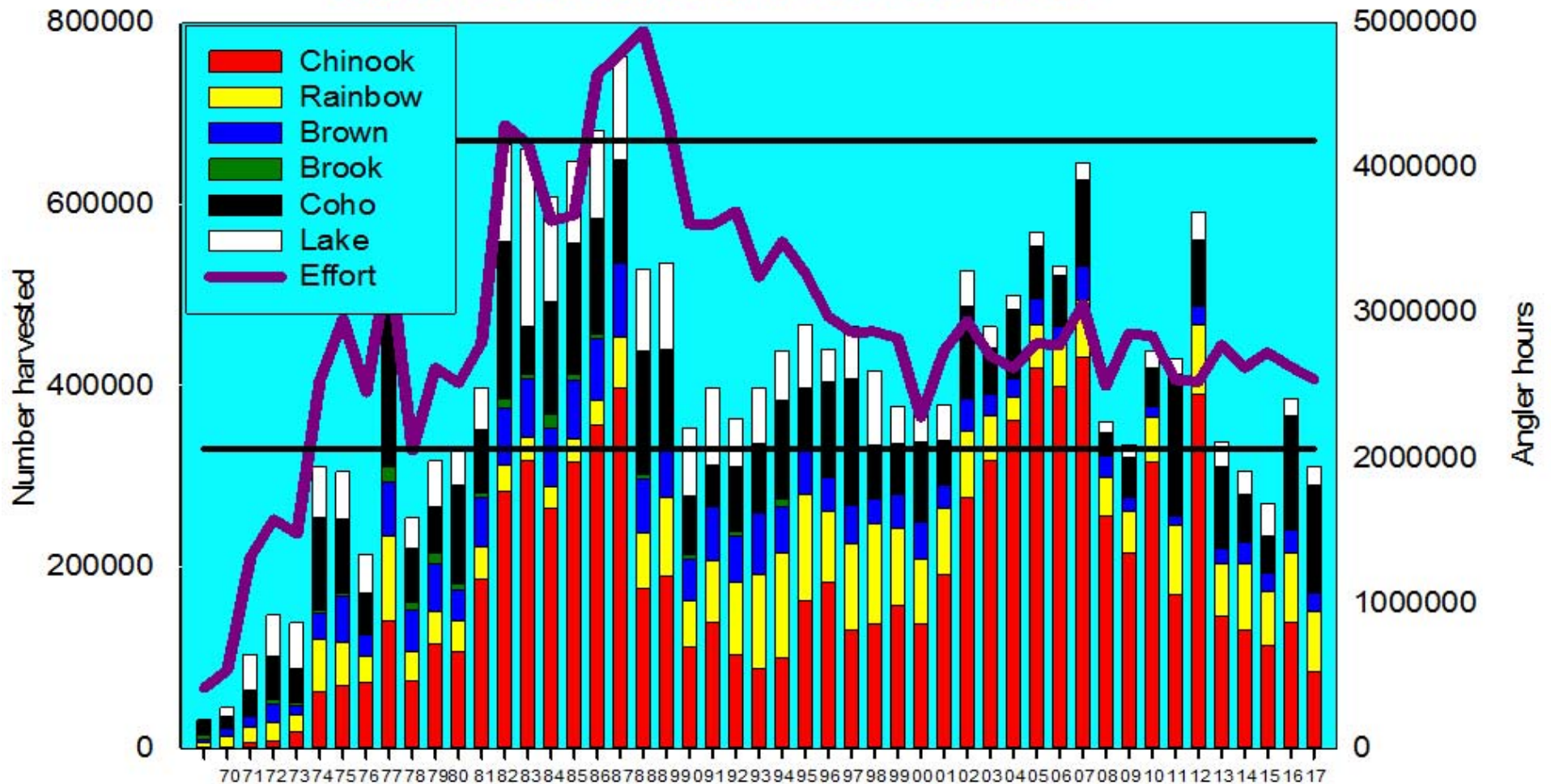
Species	2016	2017	2018
	Actual numbers stocked	Actual numbers stocked	Proposed stocking numbers
<b>Chinook salmon</b>	812,270	813,386	810,000
<b>Coho salmon</b>	457,884	445,814	400,000
<b>Lake trout</b>	712,377	300,000	300,000
<b>Steelhead</b>	269,512	303,271	350,000
<b>Brown trout</b>	1,020,582	368,433	376,000
<b>Totals</b>	3,272,625	2,230,904	2,236,000



**FISHERIES MANAGEMENT..... we make fishing better**



# Lake Michigan Salmon and Trout harvest and effort from 1969 to 2017



# Large mesh gill net study - Status

- Secretary's office has/will be working on this item
- Once a decision has been made and an updated study framework has been developed, we will have another meeting to discuss it



# Net pen usage



**FISHERIES MANAGEMENT..... we make fishing better**



# Acclimation net pens

(up to 36 hours)

Location	Species	Date	Number
<b>Gills Rock</b>	Chinook	May 2*	~16,000
<b>Port Washington</b>	Brown	Mar 5	14,969
	Coho	Mar 7	16,762
	Coho	Mar 9	16,762
	Brown	Mar 21	15,068
	Chinook	May 16*	~45,000
<b>Milwaukee</b>	Chinook	May 2-3*	~90,000
<b>Racine</b>	Coho	Mar 21-22	15,466
	Coho	Mar 27	30,671
	Coho	Mar 28	30,104

\* Stocking plans are tentative

# Chinook net pens

(up to two weeks)

Location	Dates	Number
<b>Marinette*</b>	May 3-17	~14,000
<b>Gills Rock*</b>	May 2-16	~16,000
<b>Algoma</b>	April 23-May 7	18,000
<b>Kewaunee</b>	Apr 20-May 4	24,372
<b>Port Washington*</b>	May 1-15	~45,000
<b>Racine</b>	Apr 17-May 1	32,763
<b>Kenosha*</b>	April 26-May 10	~40,000

\* Stocking plans are tentative



**FISHERIES MANAGE**



**just better**



# Zone 1 / 2 – Catch Composition Study

The study will be joint effort between the LMCFB, Sea Grant DNR, with Sea Grant as the project manager

1. *Monitor by-catch/kill composition in trap nets and large mesh gillnets (LMGN) in Zone 1 and in the Green Bay portion of Zone 2 commercial whitefish fishery.*
2. *Quantify lake whitefish harvest and by-catch/kill by species in trap nets and large mesh gillnets in Zone 1 / 2 in the commercial whitefish fishery.*
3. *Evaluate impacts to the long-term sustainability of the Green Bay fishery.*
4. *Quantify mortality of by-catch/kill using independent assessment techniques in Zone 1 / 2.*

Another separate component to this project will be a plan for Stakeholder Engagement, we currently have a draft plan which includes regular updates at the LMFF

Status – Sea Grant is currently in the process of recruiting a biologist to work on this project



**FISHERIES MANAGEMENT..... we make fishing better**





# Smallmouth Bass – Green Bay / Door Lake Michigan

In 2016, the Department noticed a drop in catch particularly in the Rowley's Bay Population in Northern Door County

High public interest and controversy surrounded this topic, so the Department held a public meeting in Door County in October 2017

In response to public comments and analyses of the data, the Department has begun the process to change SMB regulations.

The Department is proposing a fishing closure during the spawning period in the Mink River, currently the regulations allow for catch and release fishing from May to June 15. New Rule (Fishing closed from 1<sup>st</sup> Sat in May to June 15)

Status – The Department is in the early stages of development of this proposal. If it gets approval from the Department, it would be presented at the 2019 Spring Hearings.



**FISHERIES MANAGEMENT..... we make fishing better**



# Lake Michigan Charter Boat reporting

## Electronic system



---

**FISHERIES MANAGEMENT..... we make fishing better**



# Lake Michigan Charter Boat reporting

- Department applied for a grant to develop this system
  - Work with Charter Captains to develop a system
  - Basics for system must include
    - Electronic system – internet
    - Must be trip based
    - Data entry after fishing is completed
  - Eliminate data entry by DNR staff reducing program costs; Eliminate data error
  - Provide optional additional biological information – CWT, lengths
  - Benefits include real-time data and accessibility by Charter captains
    - Access to past information
    - Ability to summarize data by year, month, week
    - Customized reports – chinook catch rates
- Use information in outdoor fishing reports



**FISHERIES MANAGEMENT..... we make fishing better**



# Questions / Comments

