

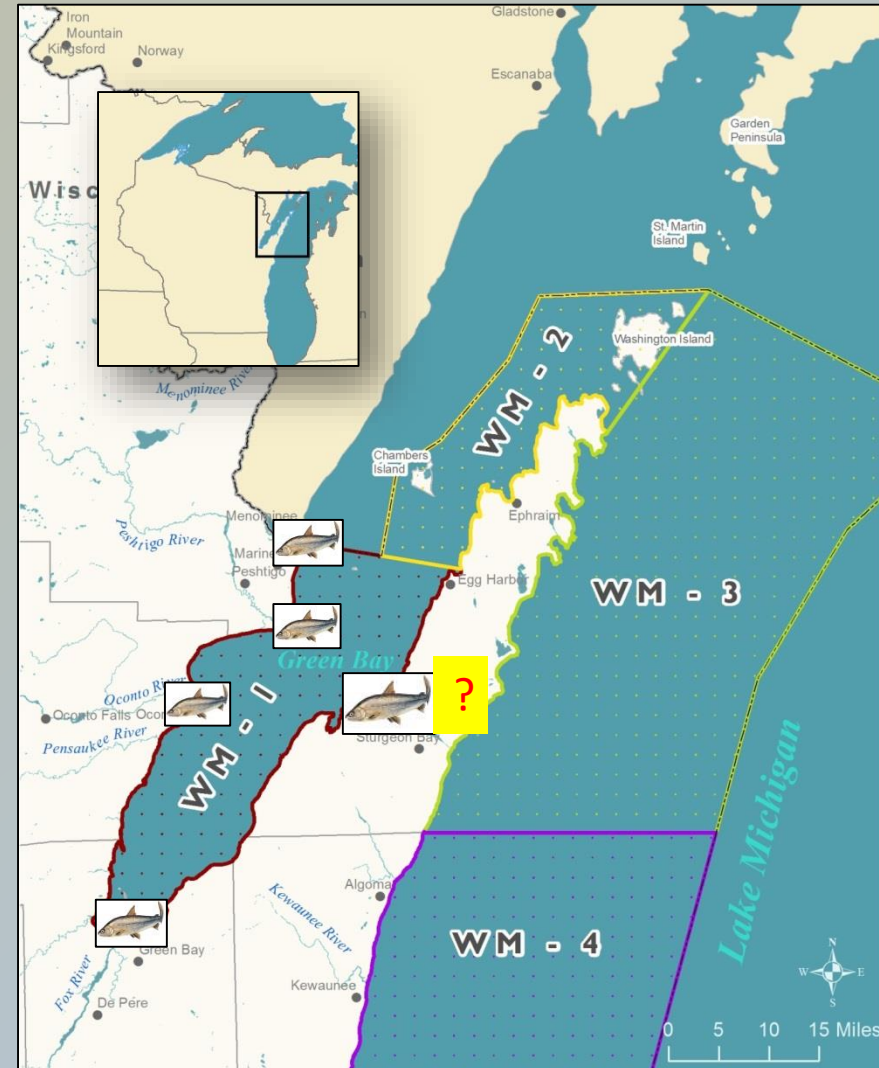
Green Bay Ice Fishing Guide Informational Meeting

December 17, 2018

Green Bay Regional Office

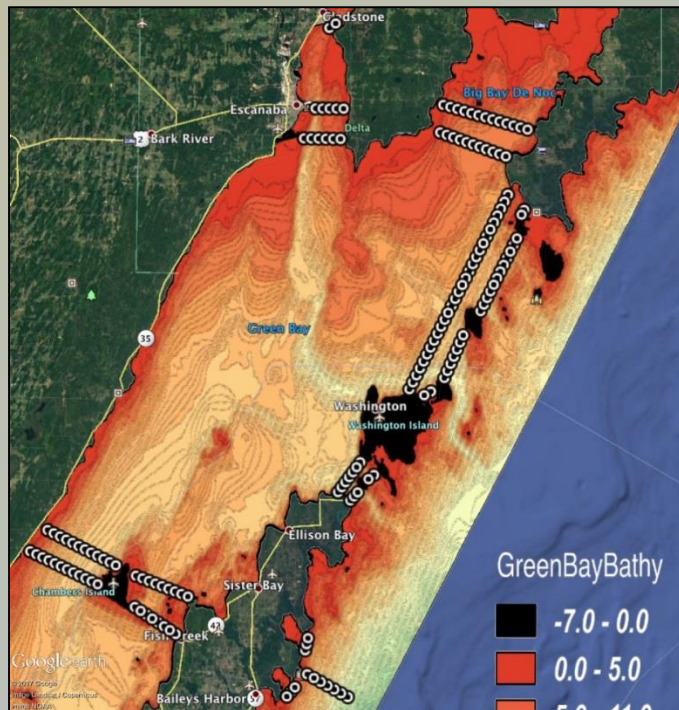
Green Bay Whitefish Fishery

- Considerable changes in WF pop over the past 15-20 years
- Re-colonization of tributaries
 - And Green Bay proper?
- Strong recruitment events
 - 2015 strongest to date
- Changing fisheries
 - Increased commercial catches
 - Substantial recreational fishery
- Increased stock complexity



Whitefish Research 2017-18

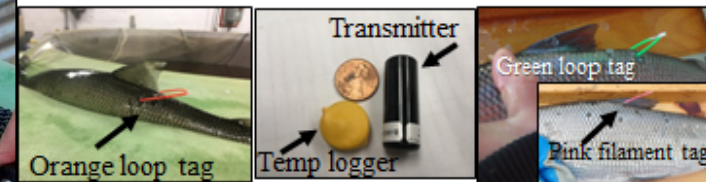
- Acoustic telemetry (UW-Stevens Pt)
 - 400 fish tagged (Fox/Menominee, Green Bay, Lake Michigan)
 - 165+ receivers; 3 year tags
 - Genomics



TAGGED WHITEFISH IN GREEN BAY

You may catch a whitefish with a tag located behind or near the dorsal fin. Tags may be green, orange, or pink in color. These fish are part of studies to track movements of whitefish in Green Bay and Lake Michigan. We need you to report the tags using the contact information below.

Orange tags only: Inside each fish with an orange tag is a black transmitter and a yellow temperature logger (see pictures below). If you harvest a fish with an orange tag and return both the transmitter and the logger to us we will provide a \$100 reward. Do not freeze fish with orange tags and call 715-346-2178. Rewards are not offered for tags of other colors, but reporting of all tags is important.



To report a tag: (715) 346-2178
<https://www.uwsp.edu/cnr-ap/wicfru/Pages/Whitefish-Survey.aspx>



For more information:
GLATOS
Great Lakes Acoustic Telemetry
Observation System
<http://data.glos.us/glatos>



Lake Whitefish Tagging in Lake Michigan and Green Bay 2017-2018: A Cooperative Effort



● 2017 (~ 4,500 tags)

★ 2018 (~ 4,000 tags)

* ALSO 100 acoustic tags each location 2017

● N = 673

● N = 441
★ N = 324

● N = 2733
★ N = 3166

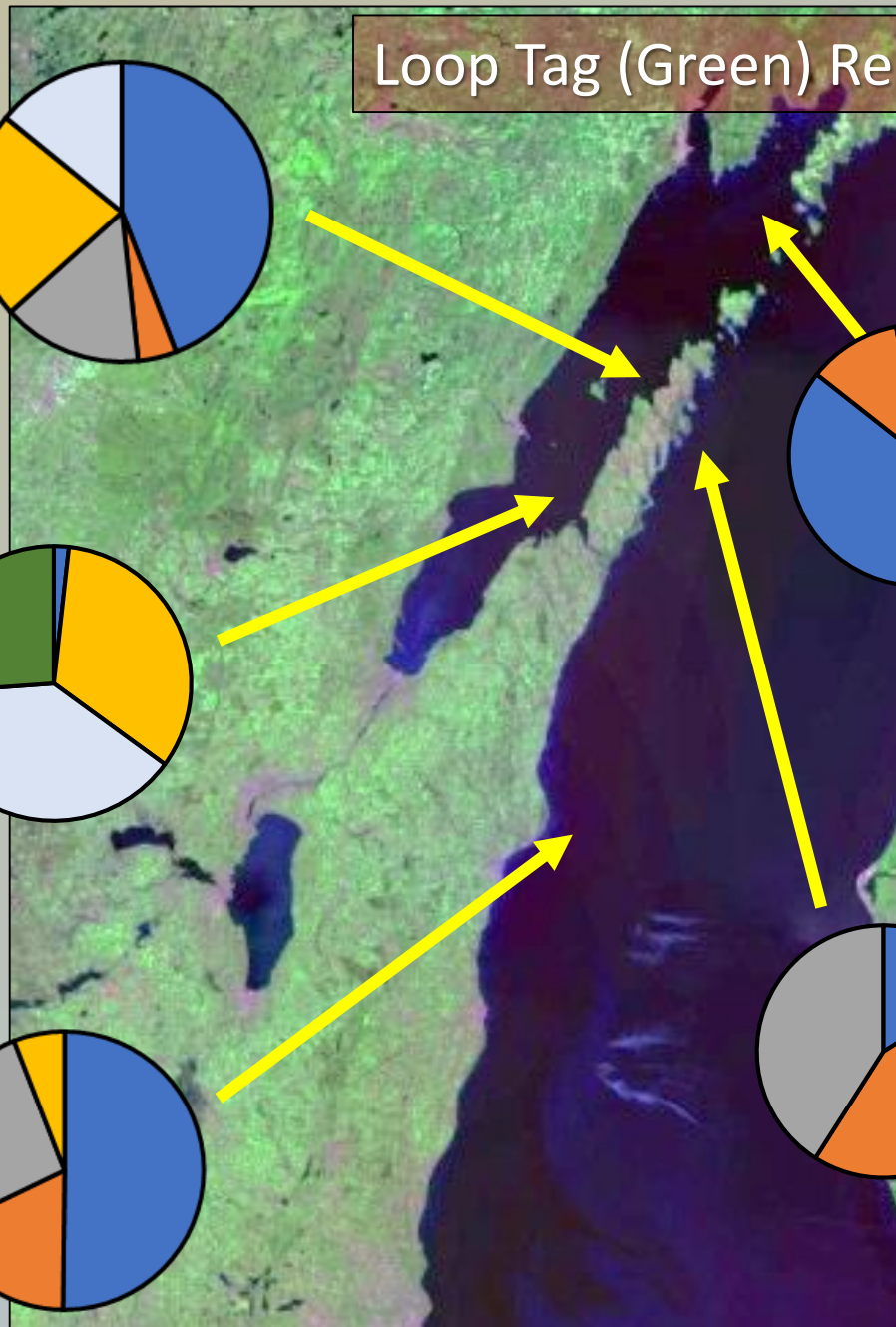
● N = 80

● N = 700
★ N = 527

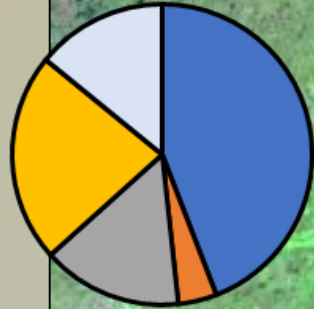
Image NOAA
Image Landsat / Copernicus

Google Earth

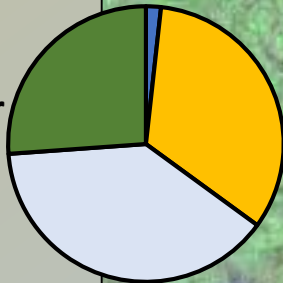
Loop Tag (Green) Reporting 2017-2018



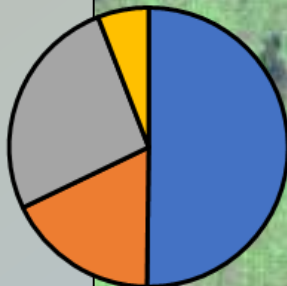
- Big Bay de Noc (6)
- Whitefish Bay (1)
- Moonlight Bay (3)*
- Menominee River (2)
- Fox River (2)



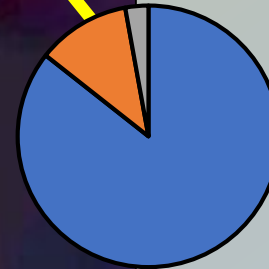
- Whitefish Bay (1)
- Menominee River (7)
- Fox River (13)



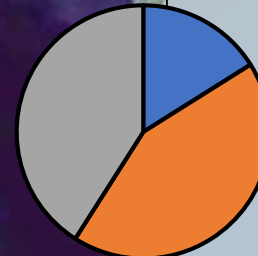
- Big Bay de Noc (13)
- North/Moonlight (10)
- Whitefish Bay (12)
- Menominee River (1)



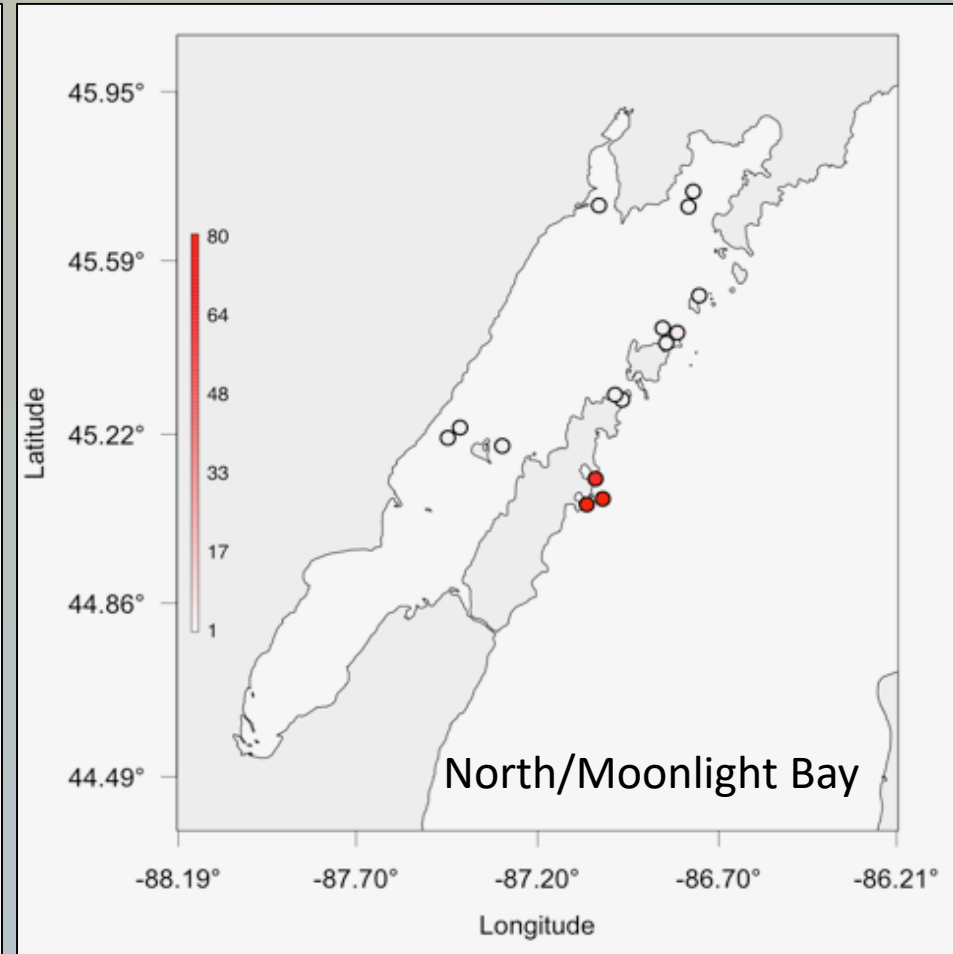
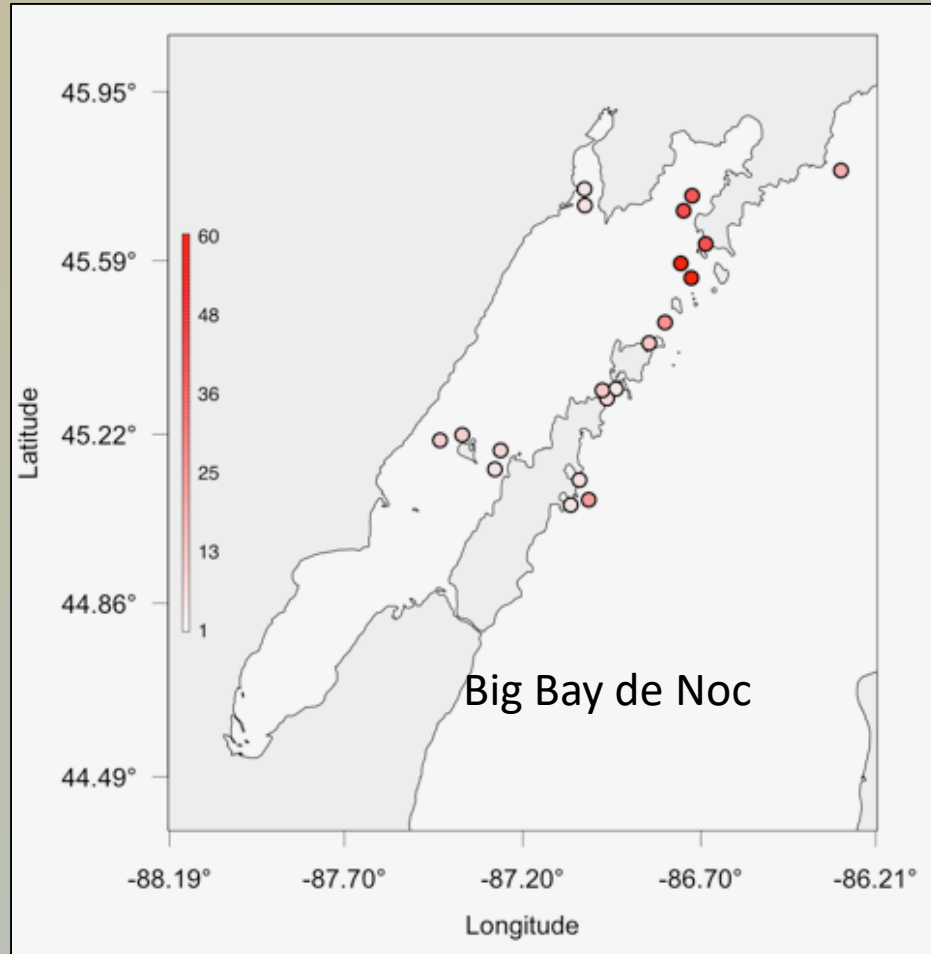
- Big Bay de Noc (17)
- NMB Bay (5)*
- Whitefish Bay (1)
- + Floy river fish



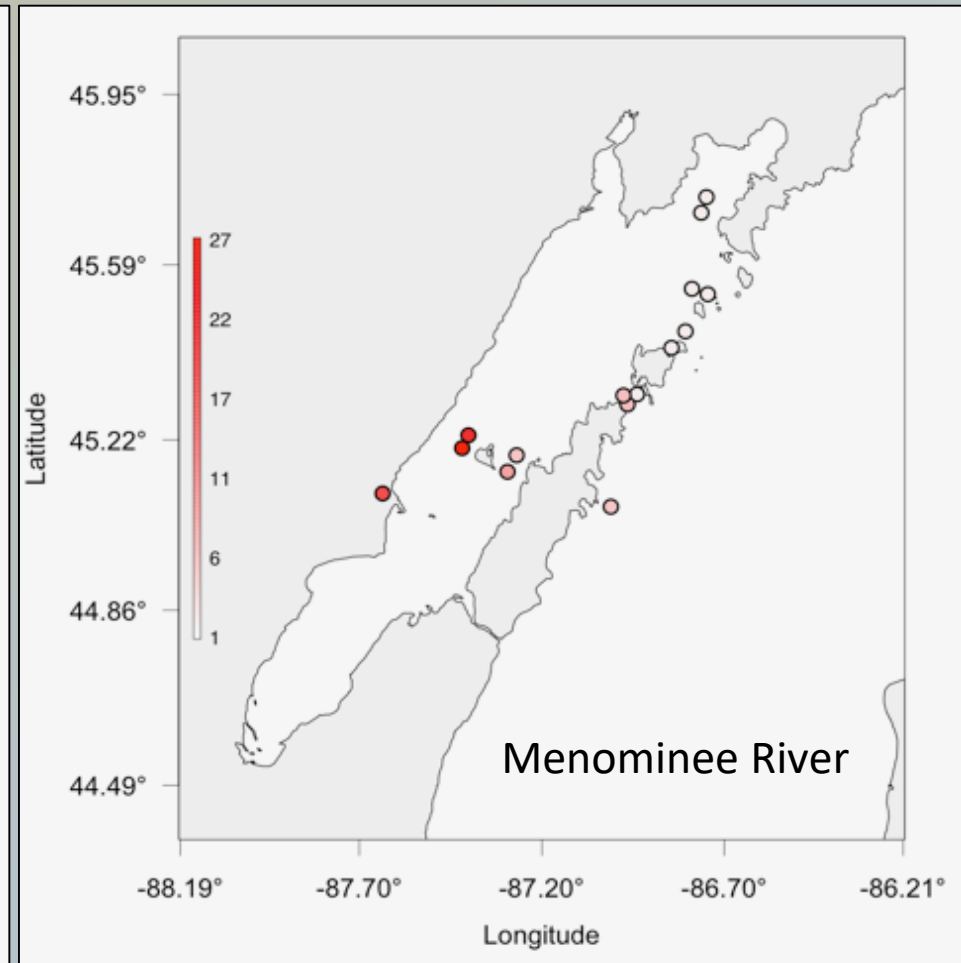
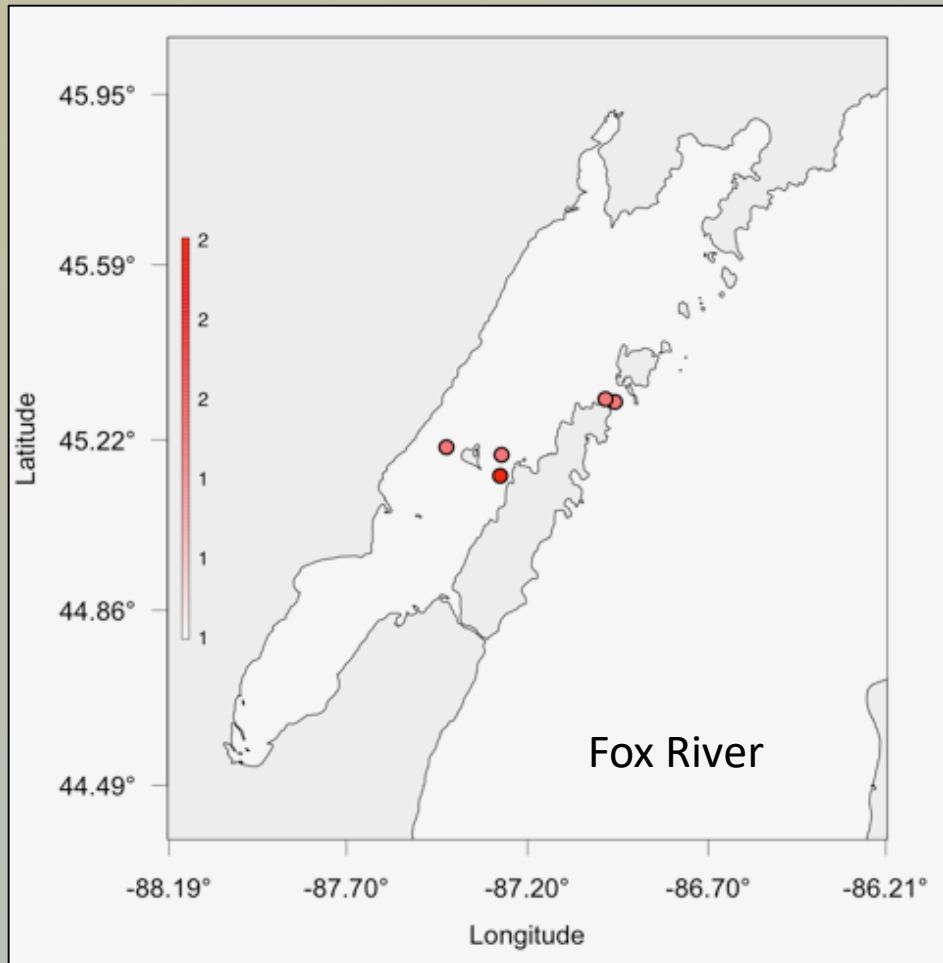
- Big Bay de Noc (6)
- North/Moonlight (35)
- Whitefish Bay (27)



Very Preliminary Acoustic Results (Orange tags)

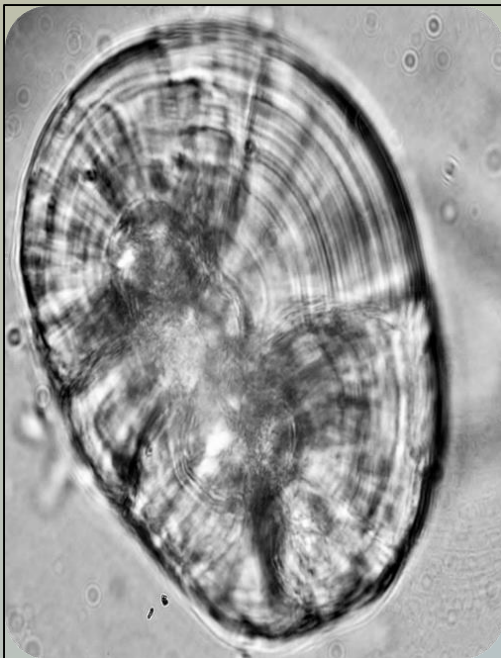


Very Preliminary Acoustic Results (Orange tags)



Whitefish Research 2017-18

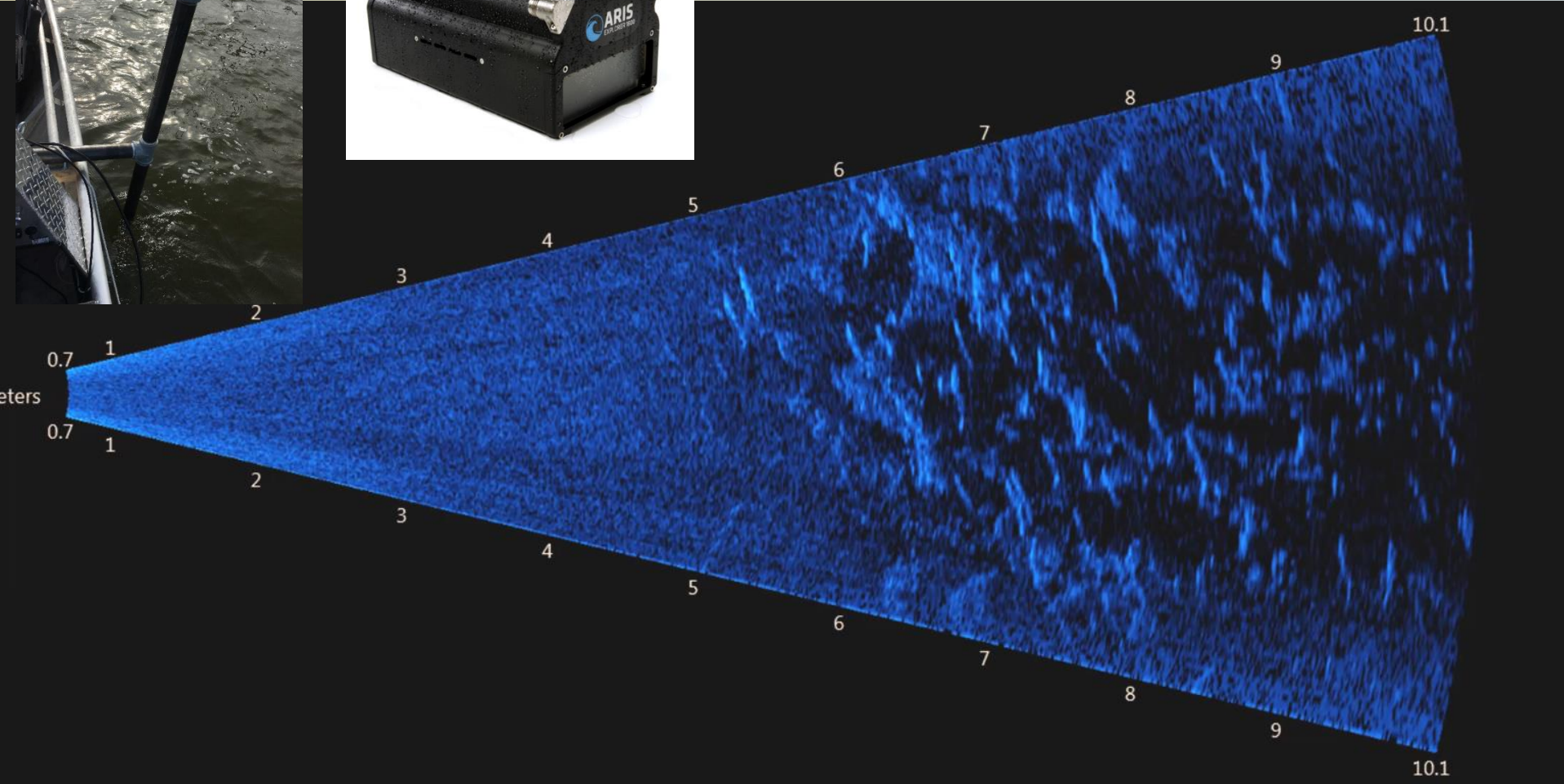
- Otolith microchemistry (UW-Green Bay)
 - Focus on river populations
 - Identify populations based on chemical signature of otolith
 - Origin: Rivers, Green Bay, Lake Michigan



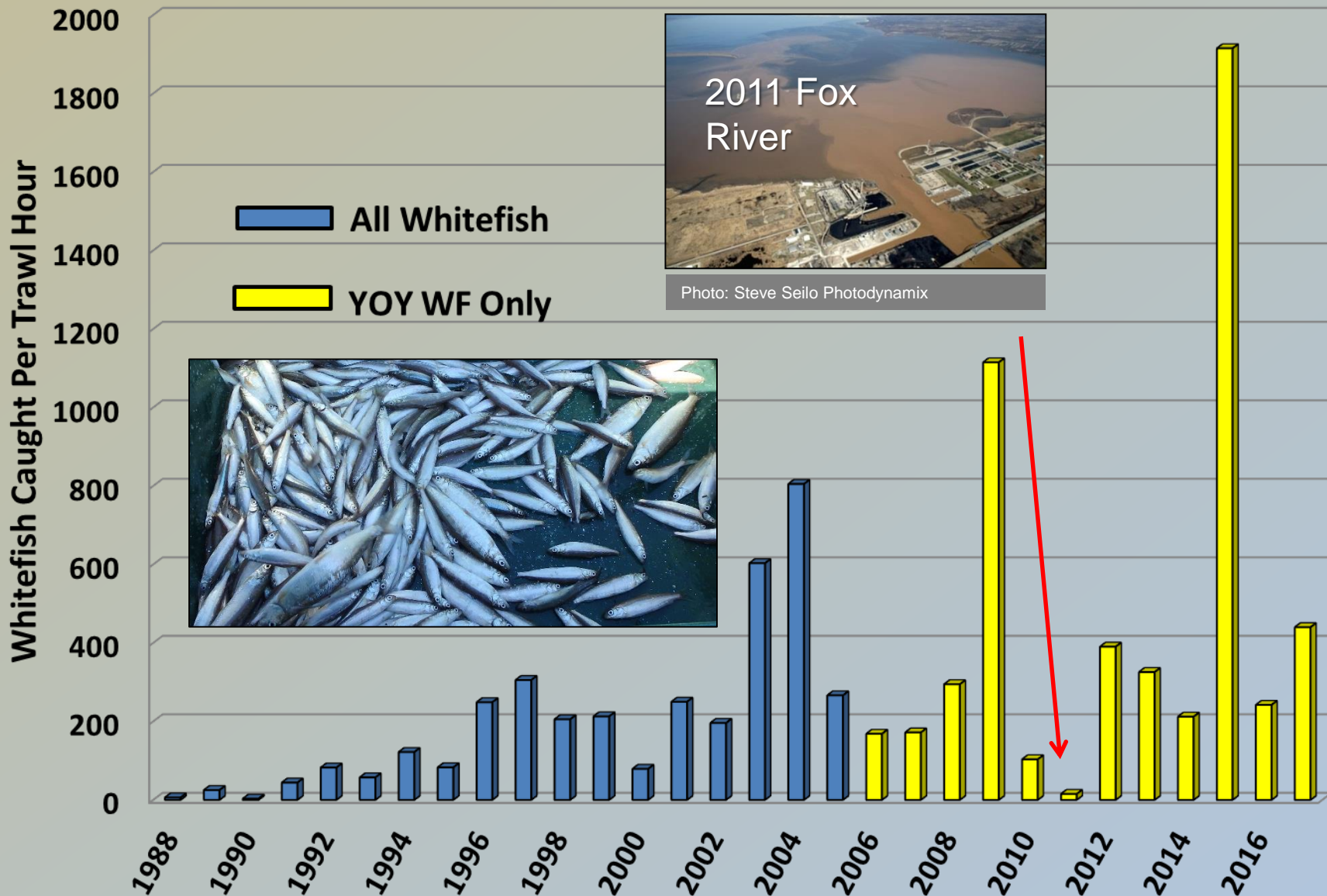
Whitefish Research 2017-18

- Larval whitefish dynamics (UW-Green Bay)
 - Focus on river populations
 - Larval production, drift factors
 - Spawning migrations
 - Spawning substrate evaluation
 - Where and on what do whitefish spawn?





Green Bay Juvenile Trawl Index



Green Bay Ice Guide Reporting

- Goal: Increase accuracy of harvest estimates
 - Important to population model inputs
- Supplement bio-data (e.g. tags, length/age data)
- Guided trip data often difficult to capture
 - Greater success rate than average angler
- Pilot data in 2016 provided some insight on scale of whitefish harvest and effort
- Strong overall support for reporting
- Positive reflection of the Green Bay guiding community

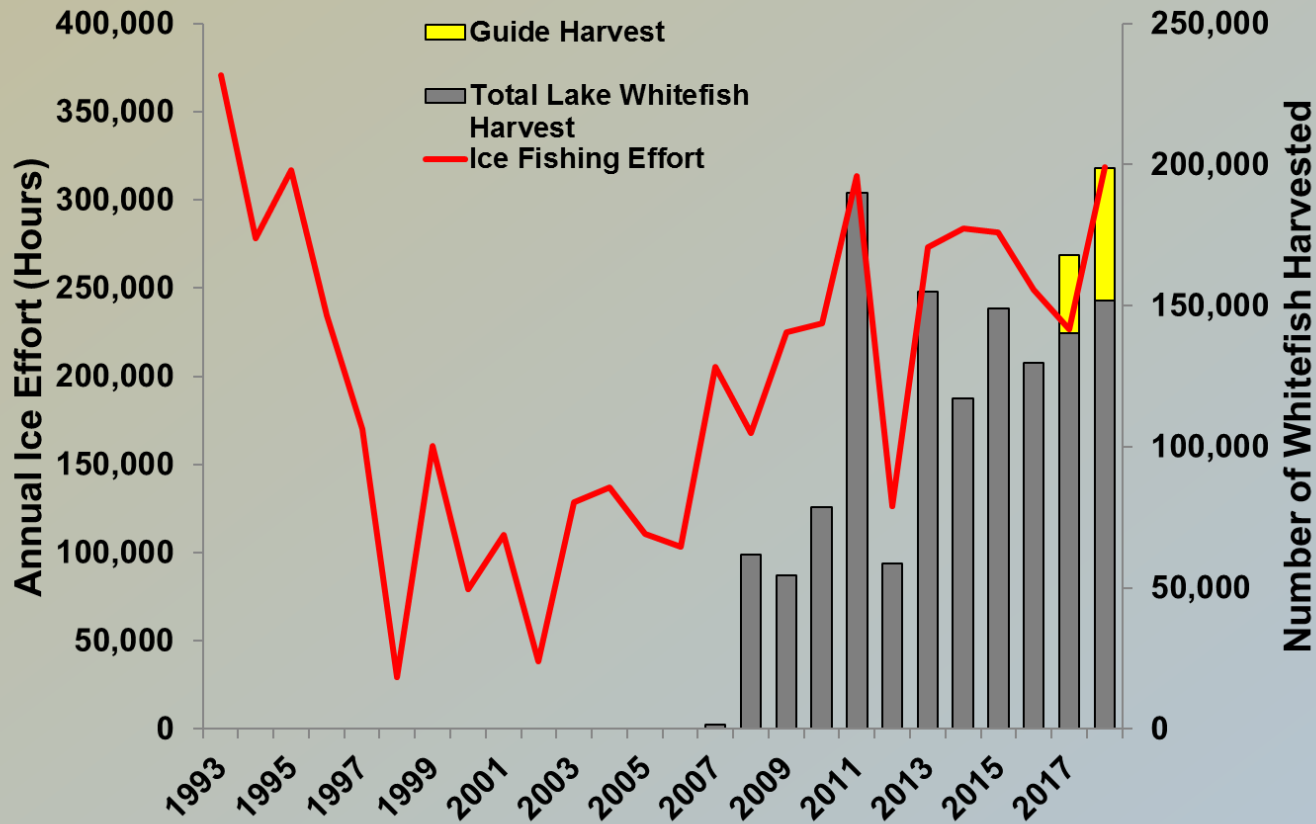
Guides Reporting

Season	Guides Reporting Annually	Did not report in 2017-2018	Did not Report in 2016-2017
2016-2017	27	10	-
2017-2018	21	-	4
2018-2019	20		

Guide Effort and Harvest

Season	No. Anglers	No. Hrs	Whitefish Harvest	Walleye Harvest	Perch Harvest
<u>2016-2017</u>	4,052 (1-60)	4,609	27,557	3	150
Jan	1,408	1,698	9,267	3	136
Feb	2,631	2,884	18,180	0	14
March	13	27	110	0	0
<u>2017-2018</u>	5,305 (1-60)	7,334	36,596**	30	79
Dec	19	38	186	0	0
Jan	2,047	3,164	16115	8	70
Feb	2,652	3,350	16582	6	8
March	587	782	3713	16	1

Green Bay Sport Ice Fishery



Reports to Date – Issues and Concerns

- Generally good. Completed as requested
- Released whitefish category
 - Enter “0” or “-” if none
- Due date 10th of following month.
- Keep yellow copy for your records
- If not fishing (e.g. Dec./March) submit “Did Not Fish” or “Done Fishing” similar to charter reports
- Ideas to account for ‘target species’ ??
- Feedback for how to avoid including guided trip vehicle counts in sport creel counts

Summary

- Reporting begins Dec, 2018
 - Forms will be required during ice season defined as December thru March beginning above start date
 - If not fishing, forms still required for those months similar to charter reporting
 - E.g. “Did not fish”; “Done fishing for season”
- Reports due 10th day of month for preceding month
- Daily record-keeping notebooks available
- Monthly forms upon request to:
scott.hansen@wisconsin.gov; 920-746-2864

SAMPLE

Green Bay Ice Fishing Guide - Monthly Report
Form 9400-610 (12/16) Page 1 of 2

Guide Licensee's Name (Please print)	DNR Customer Number	Month	Year
JOE GUIDE	1234567	2	2017

I hereby certify that the above information is true and accurate. I have read and understand the reporting requirements on the reverse side.

Joe Guide

March 3, 2017

Daily Recording Notebook (optional)

Date:

Guide Name:

Shack #:[illegible]

Q/A

[illegible]

Monthly Guide Report Instructions

Green Bay Ice Fishing Guide - Monthly Report
Form 9400-610 (12/16) Page 2 of 2

The following instructions are designed to assist the licensee in preparing this monthly report of guided ice fishing activities on Green Bay:

GUIDE LICENSEE'S NAME: Print your name as it appears on your guide license.

DNR CUSTOMER NUMBER: Enter your DNR Customer # which can be found on your guide license.

MONTH: Enter the number of the month for which the report is being prepared.

YEAR: Enter the year in which the report is being prepared.

DATE: Enter the date number of the day on which the fishing occurred. Record each fishing party as a separate entry (i.e. you guide two separate parties on the same date, enter the date twice with a separate line for each fishing party).

NUMBER OF ANGLERS: Enter the total number of anglers in the fishing party guided on this day.

HOURS FISHED: Enter the number of hours that your party fished, rounded to the nearest ½ hour, in which the fishing party was engaged in fishing (i.e. if the trip was 8 hours long for a particular party, enter 8 hours fished). Enter each party on a separate line.

FISH DATA (WHITEFISH, WALLEYE, YELLOW PERCH, OTHER SPECIES – excluding rough fish)

KEPT: Enter the total number caught and kept by anglers in the fishing party on the day.

RELEASED: Enter the total number caught and released by the anglers in the fishing party on the day.

TAG NUMBERS/OTHER OBSERVATIONS: Enter any fish tag numbers from any fish caught and any other information which you feel may be of value to the department in managing the fishery resource.

SIGN, DATE and SUBMIT your completed Fishing Guide Report on or before the 10th day of each month on the records for the preceding calendar month to the following address:

Wisconsin Department of Natural Resources
110 S. Neenah Avenue
Sturgeon Bay, WI 54235

For more report forms, contact: Scott Hansen; Scott.Hansen@wisconsin.gov; 920-746-2864

Size Distribution Between Tributaries

- Fox River tend to be somewhat larger
- Cardy's Reef = North/Moonlight Bay stock (Lake MI)
 - Limited recruitment in recent years
- Sport harvest size similar to river spawning fish

*450mm= ~17.7"

*550 mm= ~21.5"

