

COMPLETED PUBLIC FOREST TIMBER SALES FY2009-2021

COUNTY FORESTS								
Completed Sales								
Fiscal Year	# of Sales	Acres	\$ Stumpage	MBF	Cords	Cd. Equiv.	Avg. \$/ Cd Eq.	Avg. \$/Acre
2009	831	50,043	\$31,347,277	16,187	823,523	860,187	\$ 36.44	\$ 626.41
2010	790	49,827	\$30,104,238	17,474	832,619	871,789	\$ 34.53	\$ 604.18
2011	744	46,378	\$27,991,361	16,244	749,512	785,872	\$ 35.62	\$ 603.55
2012	809	58,068	\$36,104,844	21,135	929,846	976,808	\$ 36.96	\$ 621.77
2013	756	56,670	\$34,579,808	21,896	883,581	932,277	\$ 37.09	\$ 610.20
2014	671	45,450	\$30,691,157	17,009	738,214	775,990	\$ 39.55	\$ 675.27
2015	706	49,277	\$38,863,371	20,635	857,038	902,996	\$ 43.04	\$ 788.67
2016	644	45,108	\$41,672,407	20,316	769,437	814,560	\$ 51.16	\$ 923.84
2017	581	39,285	\$37,483,619	20,871	653,379	699,643	\$ 53.58	\$ 954.15
2018	667	48,340	\$45,247,329	24,105	837,030	890,364	\$ 50.82	\$ 936.02
2019	672	42,242	\$43,709,114	26,774	797,744	857,224	\$ 50.99	\$ 1,034.73
2020	533	36,835	\$34,907,659	21,895	705,390	753,888	\$ 46.30	\$ 947.68
2021	625	45,793	\$40,764,303	27,095	849,495	909,407	\$ 44.83	\$ 890.19
Totals	9,029	613,316	\$473,466,485	271,637	10,426,807	11,031,004		
Ave.	695	47,178	\$36,420,499	20,895	802,062	848,539	\$ 42.92	\$ 771.98

STATE FORESTS								
Completed Sales								
Fiscal Year	# of Sales	Acres	\$ Stumpage	MBF	Cords	Cd. Equiv.	Avg. \$/ Cd Eq.	Avg. \$/Acre
2009	105	9,359	\$5,937,784	4,303	147,662	157,529	\$ 37.69	\$ 634.45
2010	89	9,649	\$5,916,323	3,911	155,264	164,185	\$ 36.03	\$ 613.15
2011	86	10,621	\$7,087,706	4,037	188,705	197,872	\$ 35.82	\$ 667.33
2012	108	12,034	\$7,754,740	3,883	198,685	207,554	\$ 37.36	\$ 644.40
2013	97	10,777	\$6,580,127	3,094	160,946	167,912	\$ 39.19	\$ 610.57
2014	110	9,722	\$6,972,476	3,344	164,662	172,291	\$ 40.47	\$ 717.19
2015	106	9,804	\$6,960,005	2,507	148,640	154,234	\$ 45.13	\$ 709.91
2016	91	8,510	\$6,002,581	2,091	137,290	141,980	\$ 42.28	\$ 705.36
2017	111	10,828	\$8,242,016	3,775	183,037	191,563	\$ 43.03	\$ 761.18
2018	79	6,433	\$4,868,210	2,495	105,260	111,007	\$ 43.85	\$ 756.76
2019	101	11,842	\$8,099,810	2,609	186,830	192,585	\$ 42.06	\$ 683.99
2020	86	8,289	\$6,063,400	2,523	140,275	145,906	\$ 41.56	\$ 731.50
2021	85	7,607	\$6,248,753	2,622	134,727	140,544	\$ 44.46	\$ 821.45
	1,254	125,475	\$86,733,931	41,194	2,051,982	2,145,161		
Ave.	96	9,652	\$6,671,841	3,169	157,845	165,012	\$ 40.43	\$ 691.24

OTHER STATE LANDS								
Completed Sales								
Fiscal Year	# of Sales	Acres	\$ Stumpage	MBF	Cords	Cd. Equiv.	Avg. \$/ Cd Eq.	Avg. \$/Acre
2009	162	7,213	\$3,990,546	2,441	123,508	129,010	\$ 30.93	\$ 553.24
2010	116	4,196	\$2,127,668	1,989	72,131	76,601	\$ 27.78	\$ 507.07
2011	104	4,570	\$2,968,123	2,228	84,659	89,616	\$ 33.12	\$ 649.48
2012	100	3,886	\$2,220,994	1,668	63,844	67,543	\$ 32.88	\$ 571.54
2013	122	5,370	\$3,162,456	1,739	106,078	109,925	\$ 28.77	\$ 588.91
2014	155	7,931	\$5,255,785	2,874	151,946	158,319	\$ 33.20	\$ 662.69
2015	118	6,082	\$4,121,138	3,983	111,663	120,634	\$ 34.16	\$ 677.60
2016	132	7,166	\$4,456,623	3,518	104,353	112,118	\$ 39.75	\$ 621.91
2017	144	6,433	\$4,645,845	3,652	110,990	119,194	\$ 38.98	\$ 722.19
2018	118	7,102	\$4,693,785	3,403	116,199	123,727	\$ 37.94	\$ 660.91
2019	127	7,895	\$5,360,999	2,988	128,366	134,954	\$ 39.72	\$ 679.04
2020	129	6,335	\$3,687,300	2,759	106,165	112,288	\$ 32.84	\$ 582.05
2021	99	5,447	\$3,457,904	4,199	92,008	101,255	\$ 34.15	\$ 634.83
	1,626	79,626	\$50,149,165	37,441	1,371,910	1,455,182		
Ave.	125	6,125	\$3,857,628	2,880	105,532	111,937	\$ 34.46	\$ 629.81

STATE LANDS TOTAL								
Completed Sales								
Fiscal Year	# of Sales	Acres	\$ Stumpage	MBF	Cords	Cd. Equiv.	Avg. \$/ Cd Eq.	Avg. \$/Acre
2009	267	16,572	\$ 9,928,330	6,744	271,170	286,538	\$ 34.65	\$ 599.10
2010	205	13,845	\$ 8,043,991	5,900	227,394	240,786	\$ 33.41	\$ 581.00
2011	190	15,191	\$ 10,055,828	6,265	273,365	287,487	\$ 34.98	\$ 661.96
2012	208	15,920	\$ 9,975,734	5,552	262,529	275,097	\$ 36.26	\$ 626.62
2013	219	16,147	\$ 9,742,584	4,833	267,024	277,836	\$ 35.07	\$ 603.37
2014	265	17,653	\$ 12,228,261	6,217	316,609	330,610	\$ 36.99	\$ 692.70
2015	224	15,886	\$ 11,081,142	6,490	260,302	274,868	\$ 40.31	\$ 697.54
2016	223	15,676	\$ 10,459,184	5,609	241,643	254,098	\$ 41.16	\$ 667.21
2017	255	17,261	\$ 13,701,456	7,427	294,026	310,757	\$ 44.09	\$ 793.78
2018	197	13,535	\$ 9,561,995	5,898	221,459	234,734	\$ 40.74	\$ 706.46
2019	228	19,737	\$ 13,460,809	5,597	315,195	327,539	\$ 41.10	\$ 682.01
2020	215	14,624	\$ 9,750,699	5,282	246,440	258,194	\$ 37.77	\$ 666.76
2021	184	13,054	\$ 9,706,657	6,822	226,735	241,799	\$ 40.14	\$ 743.58
	2,880	205,101	137,696,670	78,636	3,423,891	3,600,343		
Ave.	222	15,777	10,592,052	6,049	263,376	276,949	\$ 38.25	\$ 671.36

* State & County - Rpt. 28B

**State Forests include NF & SF prop types

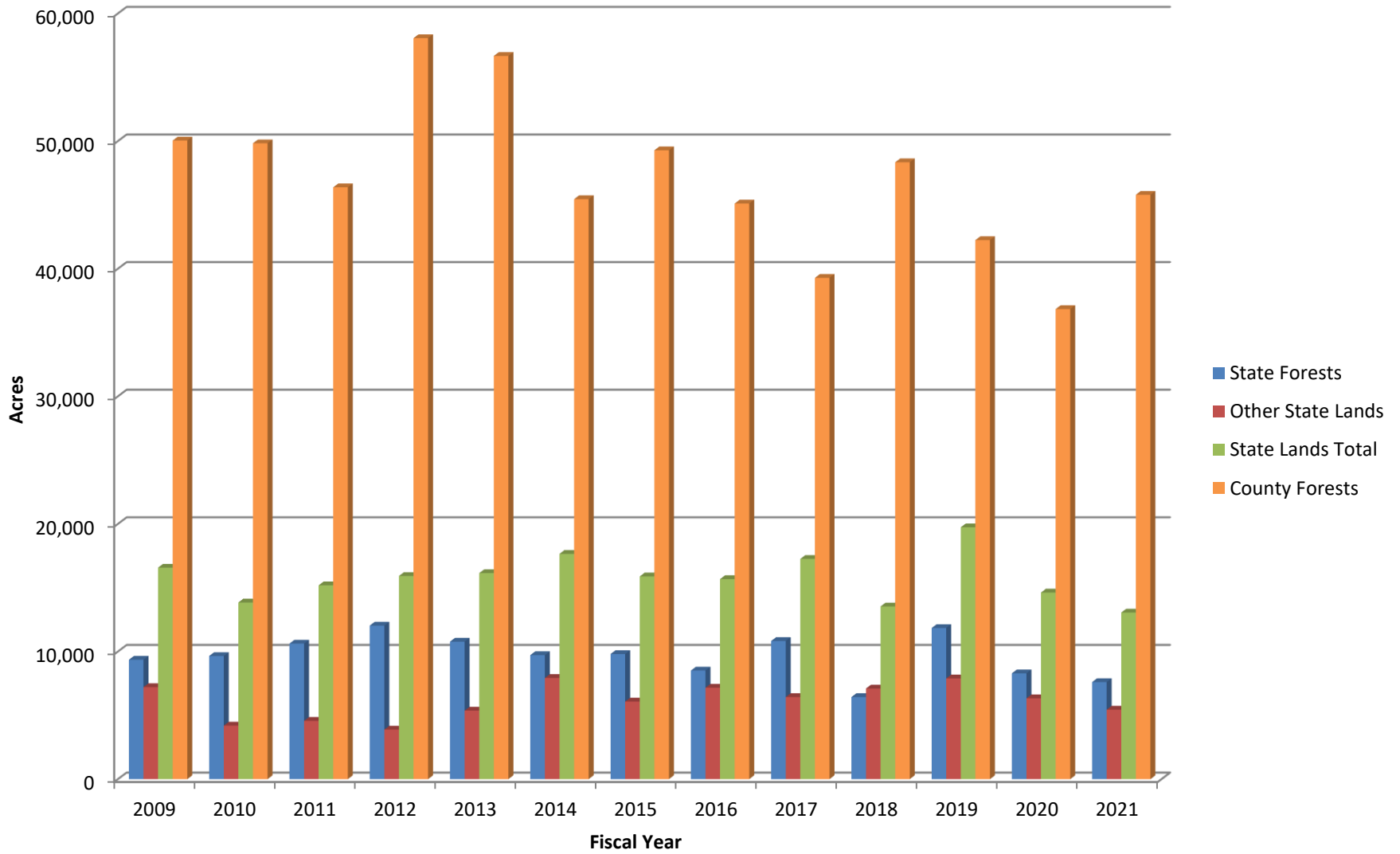
***Other State Lands include all other prop types (except NF & SF)

****Data available from Rpt. 28B (County Forest Lands-All, DNR State Forests-All, & DNR State Lands (Excl. State Forests)-All)

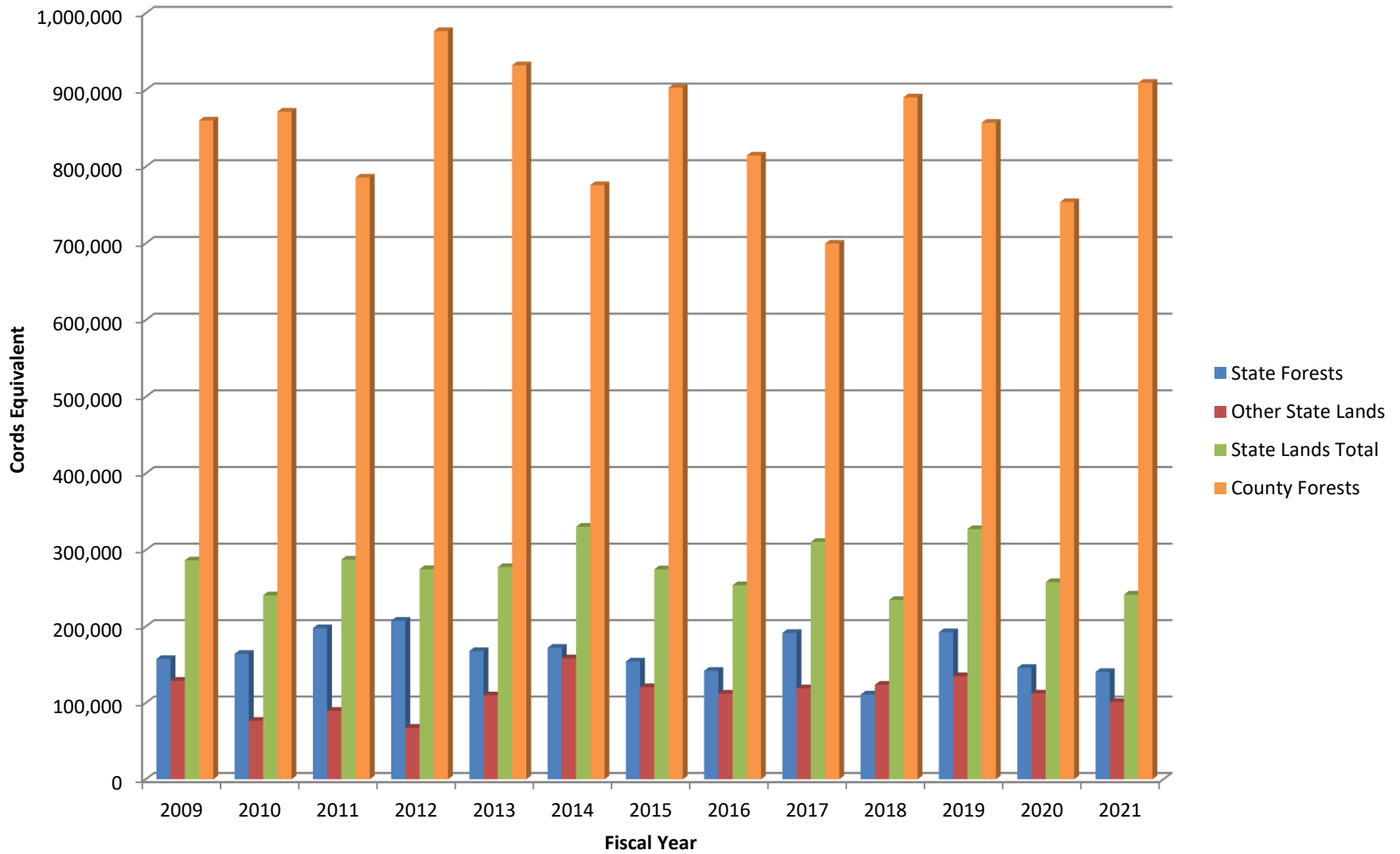
C:\Users\brownd\Documents\Timber Sales\Annual Reports_CY & FY\Fiscal Year Reports\Public T.Sales Completed FY2009-2021

Updated by:D.Brown7/1/21

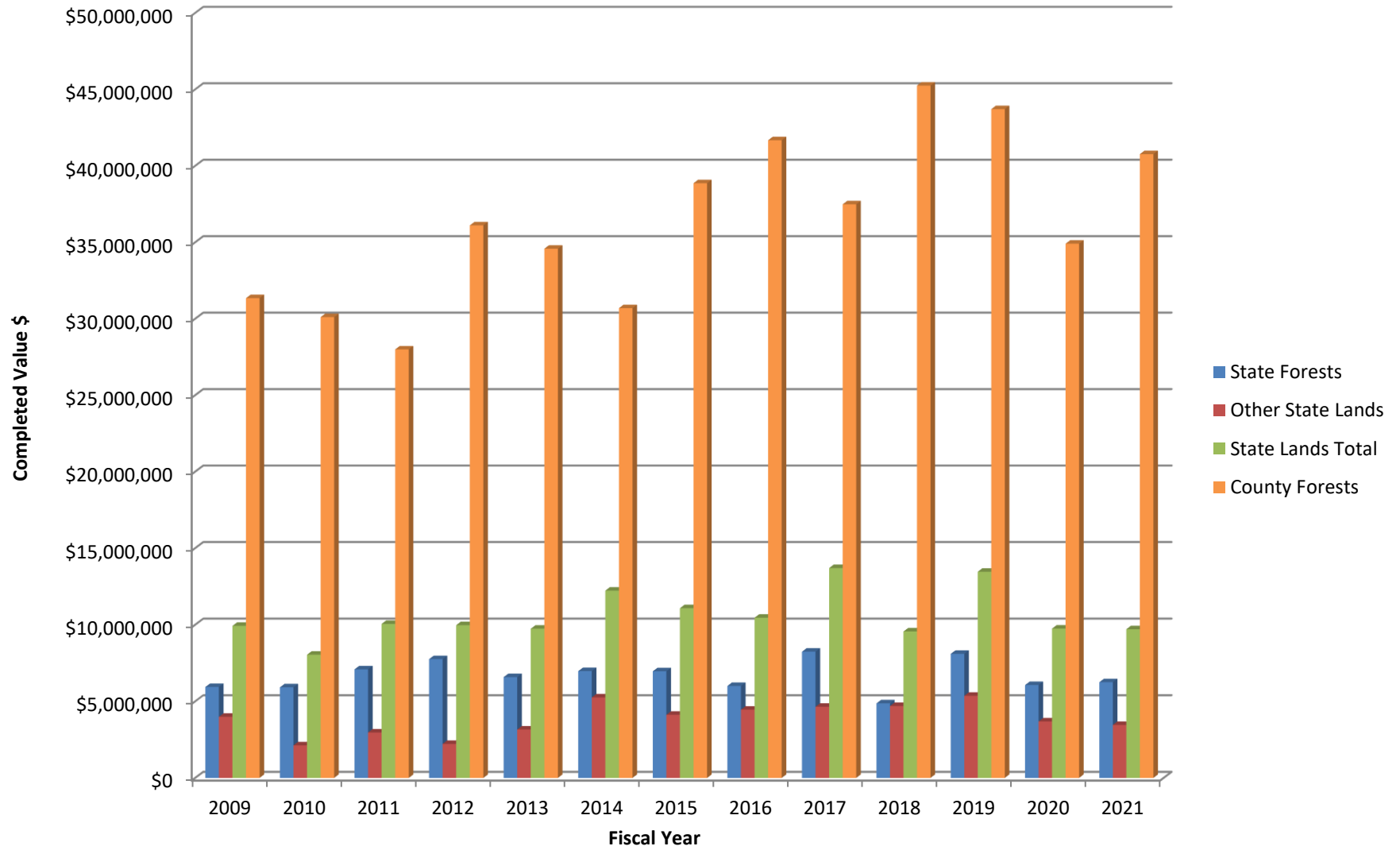
Acres of Timber Sales Completed



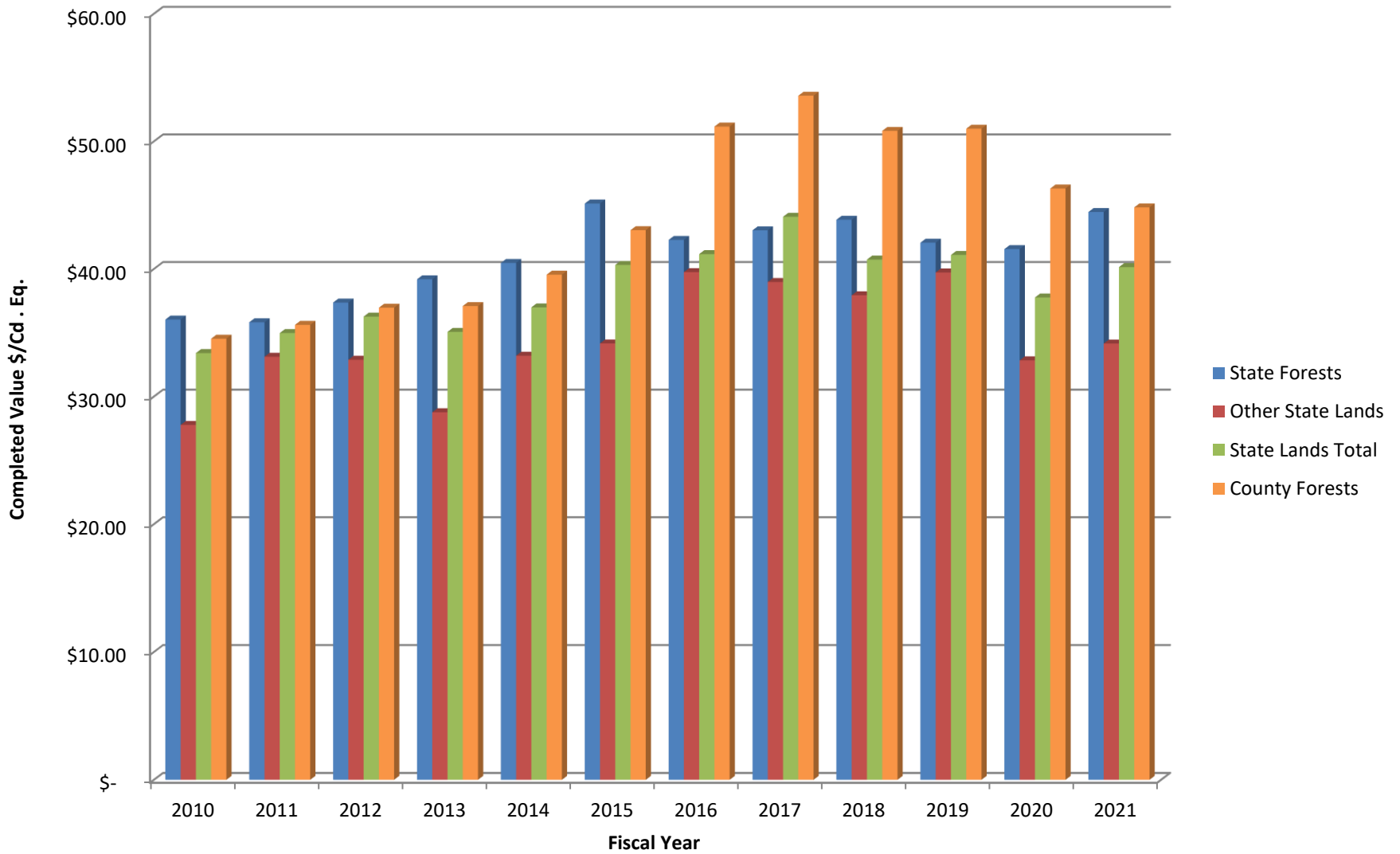
Cord Eq. Volume of Timber Sales Completed



Value of Timber Sales Completed



Average Value per Cord Equivalent of Timber Sales Completed



Average Value per Acre of Timber Sales Completed

