

Vapor Intrusion RR-800 Update

Wisconsin DNR – Vapor Intrusion



Remediation and Redevelopment Program

January 2018

Addressing Vapor Intrusion at Remediation & Redevelopment Sites in Wisconsin

Wis. Stat. ch. 292; Wis. Admin. Code ch. NR 700

Purpose

The purpose of this guidance is to provide approaches for complying with the requirements in Wis. Stat. ch. 292 and Wis. Admin. Code ch. NR 700 that relate to vapor intrusion. This guidance identifies the conditions where assessment of the vapor intrusion pathway is necessary at contaminated sites; sets out the criteria for evaluating health risk; identifies appropriate responses; explains long-term stewardship; and clarifies when sites with a complete or potential vapor migration pathway may achieve closure.

This guidance is applicable to contaminated sites where volatilization of subsurface contaminants has migrated or has the potential to migrate to current or future occupied buildings. Unless otherwise noted, all provisions in this guidance apply to the responsible party (RP) and/or property owner of a contaminated site.

Related DNR Guidance

- [RR-042: DNR Case Closure Continuing Obligations: Vapor Intrusion](#)
- [RR-986: Sub-slab Vapor Sampling Procedures](#)

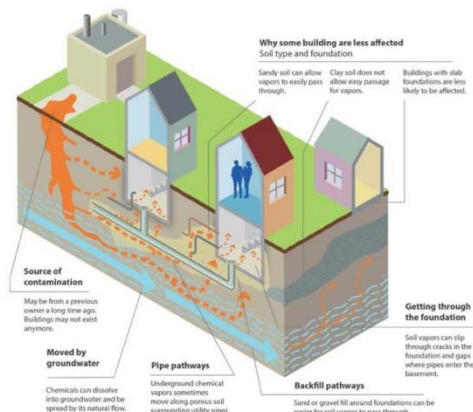
Related DNR Factsheets

- [RR-067: Vapor Intrusion Investigation - Information Sheet for Neighbors](#)
- [RR-892: What is Vapor Intrusion](#)
- [RR-953: Why Test for Vapor Intrusion?](#)
- [RR-954: What to Expect During Vapor Intrusion Sampling](#)
- [RR-977: Understanding Chemical Vapor Intrusion Testing Results](#)
- [RR-934: Who Should I Contact About Vapor Intrusion Investigations?](#)
- [RR-973: Environmental Contamination & Your Real Estate](#)

Overview of Vapor Intrusion

Vapor intrusion generally refers to subsurface contamination that can volatilize and the vapors enter the breathing space of buildings. Vapor intrusion can also occur when contaminated groundwater infiltrates buildings and contaminants directly volatilize into the indoor air. Vapors can migrate through air space in permeable soils, fractures in bedrock or clay tills, utilities, sumps, or cracks in the building foundation.

How vapor intrusion happens: a complex path



- RR-800 Finalized Jan 2018
<http://dnr.wi.gov/files/PDF/pubs/rr/RR800.pdf>
- Comment/Response posted
<http://dnr.wi.gov/news/input/Guidance.html#final>
- Aug 8, 2017 webinar highlights updates (see RR Training Library)
- Rollout webinar planned stay tuned...



VI Prevention Partnership Initiative

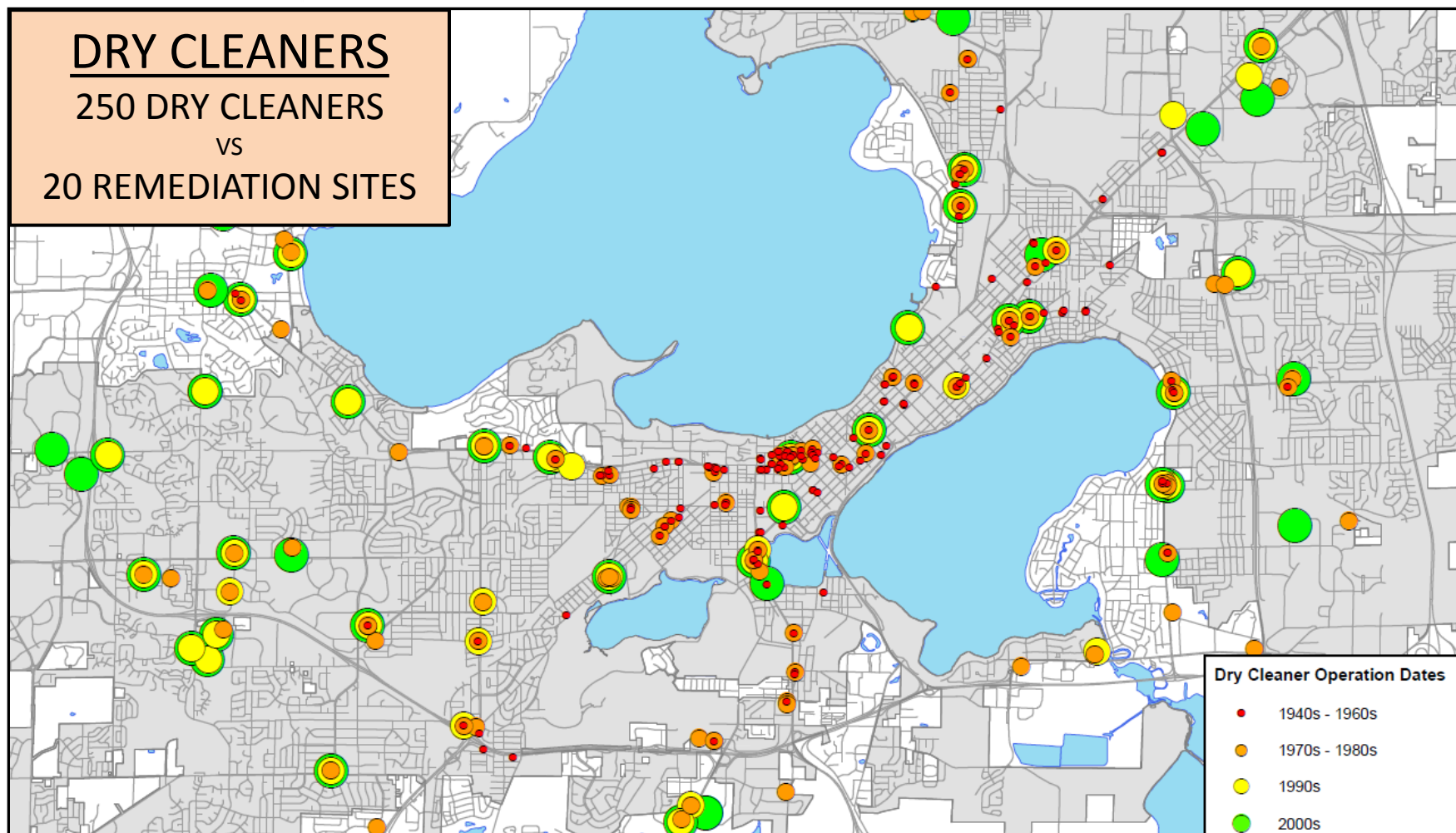
OBJECTIVES

- ✓ Educate local government units and developers on vapor intrusion (VI)
- ✓ Identify areas with high potential for VI (e.g. near former dry cleaners)
- ✓ Provide tools to prevent vapor intrusion



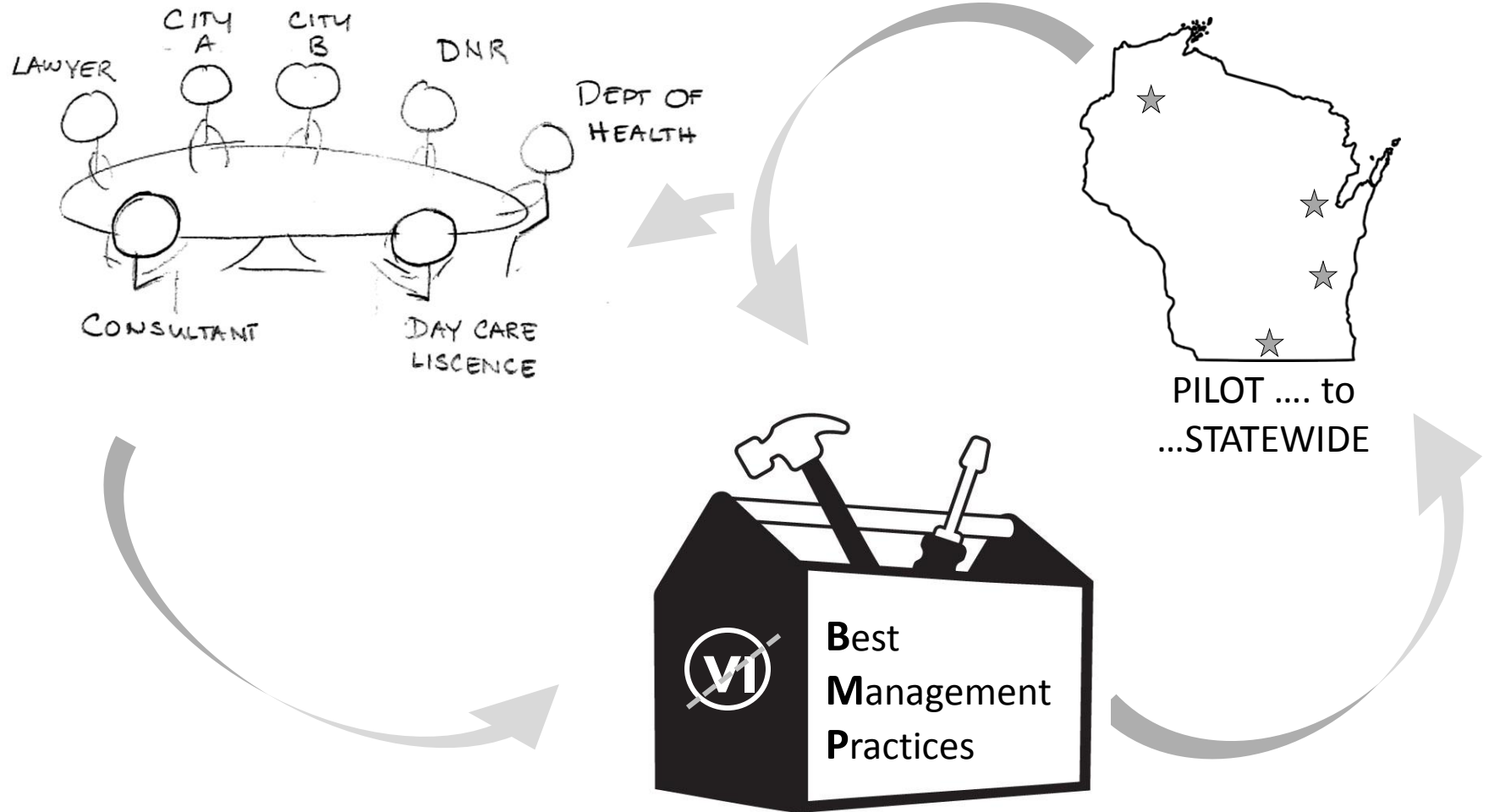
VI Prevention Partnership Initiative

WHY?





VI Prevention Partnership Initiative PROCESS





VI Prevention Partnership Initiative PILOT PROGRAM

IDENTIFY A PARTNER CITY



COMPLETE SITE INVENTORY



SCREEN AND PRIORITIZE



BEST MANAGEMENT PRACTICES

FEEDBACK



	AREAS OF KNOWN CONTAMINATION <i>DNR AUTHORITY</i>	AREAS OF SUSPECTED CONTAMINATION <i>LOCAL AUTHORITY</i>
LOCATIONS	DNR BRRTS DATABASE	HISTORICAL RECORDS AND PHONEBOOKS
OPTIONS ... DURING REDEVELOPMENT	<ul style="list-style-type: none"> ✓ Conditional use permit <i>e.g. comply with DNR Requirements</i> ✓ Day care siting checklist <i>e.g. check if on BRRTS when siting</i> 	<ul style="list-style-type: none"> ✓ Conditional use permit : <i>e.g. Require Phase 1 and 2 ESA</i> ✓ City ordinance: <i>e.g. Prohibit use as daycare unless tested</i>
... PLANNING FOR WORK IN THE RIGHT OF WAY	<ul style="list-style-type: none"> ✓ <i>Test soil if near residual contamination.</i> ✓ <i>Properly manage of contaminated material.</i> 	<ul style="list-style-type: none"> ✓ <i>Test soil if near residual contamination.</i> ✓ <i>Properly manage of contaminated material.</i>
... IN EXISTING OCCUPIED BUILDINGS	<ul style="list-style-type: none"> ✓ Local health evaluates group care facilities: <i>e.g. Confirm use complies with DNR COs</i> <i>e.g. Test for vapor intrusion, if needed</i> ✓ City Ordinance: <i>e.g Rentals must comply with CO for occupancy</i> 	<ul style="list-style-type: none"> ✓ Local health evaluates group care facilities: <i>e.g. Local health tests for vapor intrusion</i> ✓ Outreach with property owners <i>e.g. Pick areas to encourage mitigation</i>