

## New Trail Ranking and Certification Worksheet

County: Sheboygan Segment Name/Trail #: BHG Club 2

**Qualification – All items in this section must be completed for valid new miles request.**

Gateways questions: Provide justification for selection below.

- 1. Trail provides primary access route through a county and connects with another county's trails.
- 2. Trail provides access from population centers to main access trail(s).
- 3. Trail supports a high volume of use.

Maps attached

- Provide GIS file (shapefile, etc) of county trail system with the requested trail segments included.
- Provide countywide trail system map (printed/PDF) with the requested trail segments identified.
- Provide aerial map (printed/PDF) for each segment.
- Provide topographical map (printed/PDF) for each segment. Include Town-Range-Section.

I certify that this trail meets or will meet all trail requirements in chs. 23 & 350, Wis. Stats. and ch. NR 50, Wis. Admin. Code:

1. Minimum graded width for one-way trails is 6 feet and maximum 8 feet.
2. Minimum graded width for two-way trails is 10 feet and maximum 12 feet.
3. Minimum turning radius is 25 feet.
4. Minimum cleared height above trail is 10 feet.
5. Sustained grades and slopes will be a maximum of 25%.
6. Approved, fully reflectorized snowmobile signs must be used.
7. **Night travel on or in the vicinity of highways must be in the direction of vehicular traffic in the nearest lane unless:**
  - The snowmobile trail is located at least 40 feet from the roadway, or
  - is separated from the roadway by a head lamp barrier.
8. Snowmobile trails shall not be routed over bodies of water. If stream crossings make bridging necessary, bridges should be at least 8 feet wide. If the bridge is located on an abandoned railroad grade, the bridge shall be a minimum of 10 feet wide free from obstruction.

Justification – Provide narrative description of the new trail with explanation for gateway qualification checked (#1, 2 or 3 above).

1,2,3. Trail allows all snowmobilers driving west of Batavia on Corridor 34 access to Boltonville in Washington County. Boltonville has a gas station on the trail that provides a nice stop point to buy fuel. The next closet fueling stops would be Dundee, Random Lake, or Kewaskum. This trail also provides a shorter route to access the North Kettle Moraine State Forest trails near New Fane.

Currently this trail is groomed periodically when groomer operator does Corridor 34 from Batavia to Beachwood club meeting point. Batavia Hill & Gully Riders have limited yearly funds budgeted for grooming this trail. If funding granted, this trail would be groomed 1 -2 times per week. Equipment used to groom our trails is classified as Track AAA-2 groomer. The trail is a 2-way trail and is a 12-foot average width.

Does the requested trail segment include any bridges or water crossings? Describe. Bridge structures should be added to the county's snowmobile bridge inventory if not already included.

There is one bridge on this trail segment on the David Kelling property crossing over Mink Creek. This bridge has a 14-foot width and the property owner uses this bridge crossing for farm tractors and implements. The bridge is currently in very good condition as the property owner rebuilt it 2 years ago. This bridge is listed as Bridge #U3 on the County Bridge Inventory.

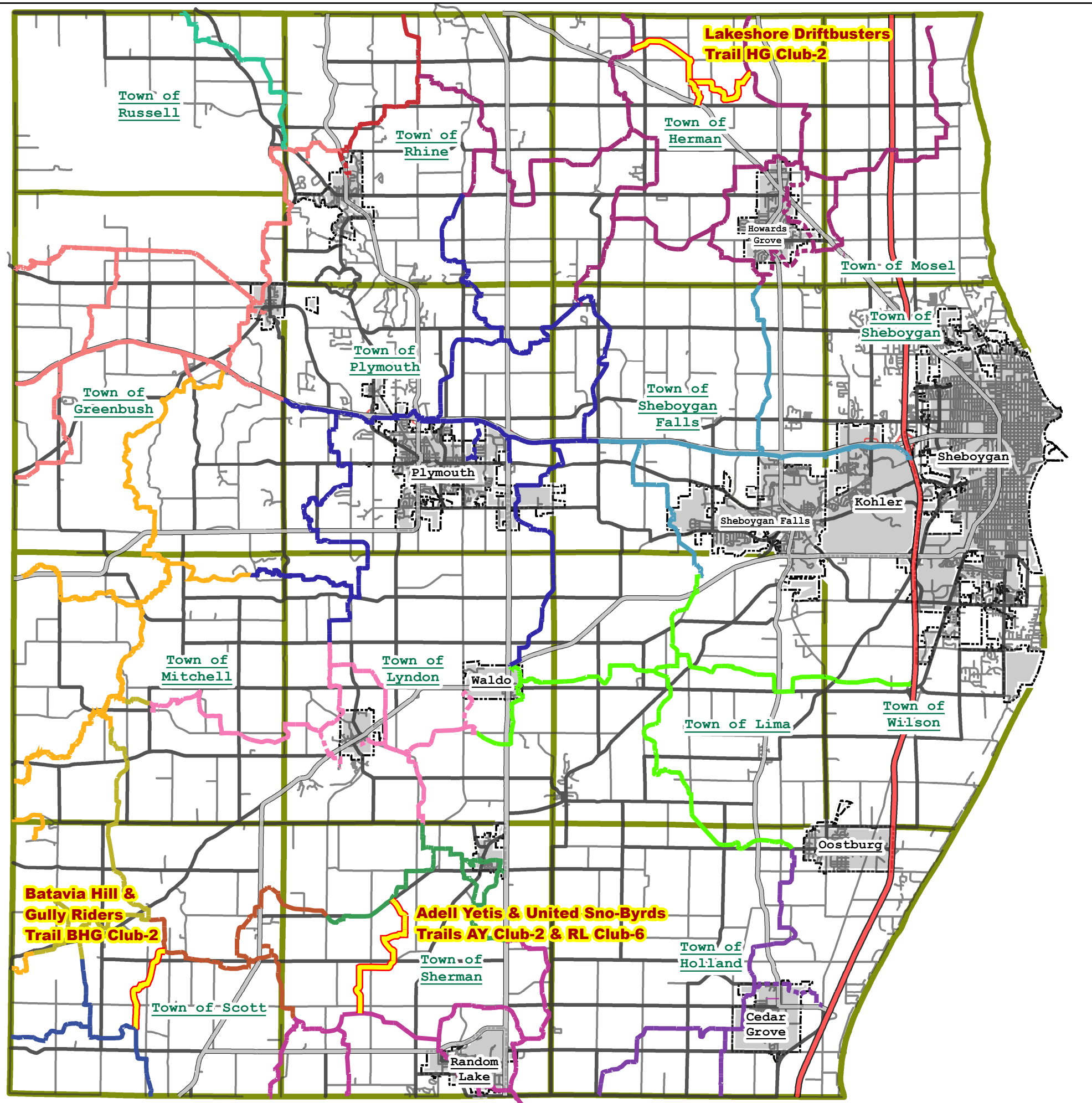
**Ranking**

	Category	Possible Points	Actual Points
1.	Trail Longevity <i>(if multiple scenarios along the trail, lowest point situation applies. County must have a copy of said easements/LUA on file.)</i>	Max points: 3	
	Trail segment is located on public land or private land with permanent deeded easement.	3	
	Trail segment on private lands with land-use agreement (LUA) of 10 years or more.	2	X2X
	Trail segment is on private lands with LUA of 5 to 9 years.	1	
	LUA of less than 5 years.	0	
2.	Trail System <i>(choose one)</i>	Max points: 3	
	Trail segment connects directly to one or more neighboring county or state trails.	3	X3X
	Trail closes a gap between two existing funded trail segments, <i>or</i> extends existing funded trail 10 or more miles – excludes routes.	2	
	Trail segment is a part of the basic county trail system.	1	1
	Trail is isolated and does not connect to the county trail system.	0	
3.	The trail segment is in the following area of mean annual snowfall <a href="#">Mean Snowfall Map per County</a> (Source: Midwestern Climate Center)	Max points: 3	
	Greater than 60 inches	3	
	48 – 60 inches	2	
	Less than 48 inches	1	1
4.	The ratio of miles of trail to total square miles of land within the county: <a href="#">Snowmobile Trail Area Ratio per County</a>	Max points: 3	
	The ratio is within the grouping 01% - 30%	3	
	The ratio is within the grouping 31% - 40%	2	
	The ratio is within the grouping 41% - 50%	1	1
	The ratio is in a grouping of over 50%	0	
5.	Trail segment will be groomed with the following equipment. <i>(choose one)</i>	Max points: 2	
	Class A-1, A-2 includes AAA and AA	2	2
	Class A-3, A-4 includes AAA and AA	1	
	Class B or C	0	
6.	County snowmobile trail coordinator priority points. <b>Note: County is allowed 2 points maximum for ALL trail segments submitted.</b>	Max points: 2	
	High priority.	2	
	Medium priority.	1	
	No priority.	0	0
7.	Deductions if trail segment contains any of the following: <i>(check all that apply)</i>	Max deduction: -8	
	New bridge, major bridge rehab or major trail rehab	-3	
	Trail segment is parallel (within 5 miles) to another funded segment	-3	-3
	Trail runs to a body of water. <i>(no deduction for use of a bridge to cross)</i>	-2	
(Maximum Points: 16) TOTAL			X6 2

Trail is near county line but does not directly connect to another county.

**Please verify that all sections of this form have been completed, and all required attachments included prior to submittal.**

# A Map of 2021-2022 Snowmobile Trails Sheboygan County, WI



## Legend

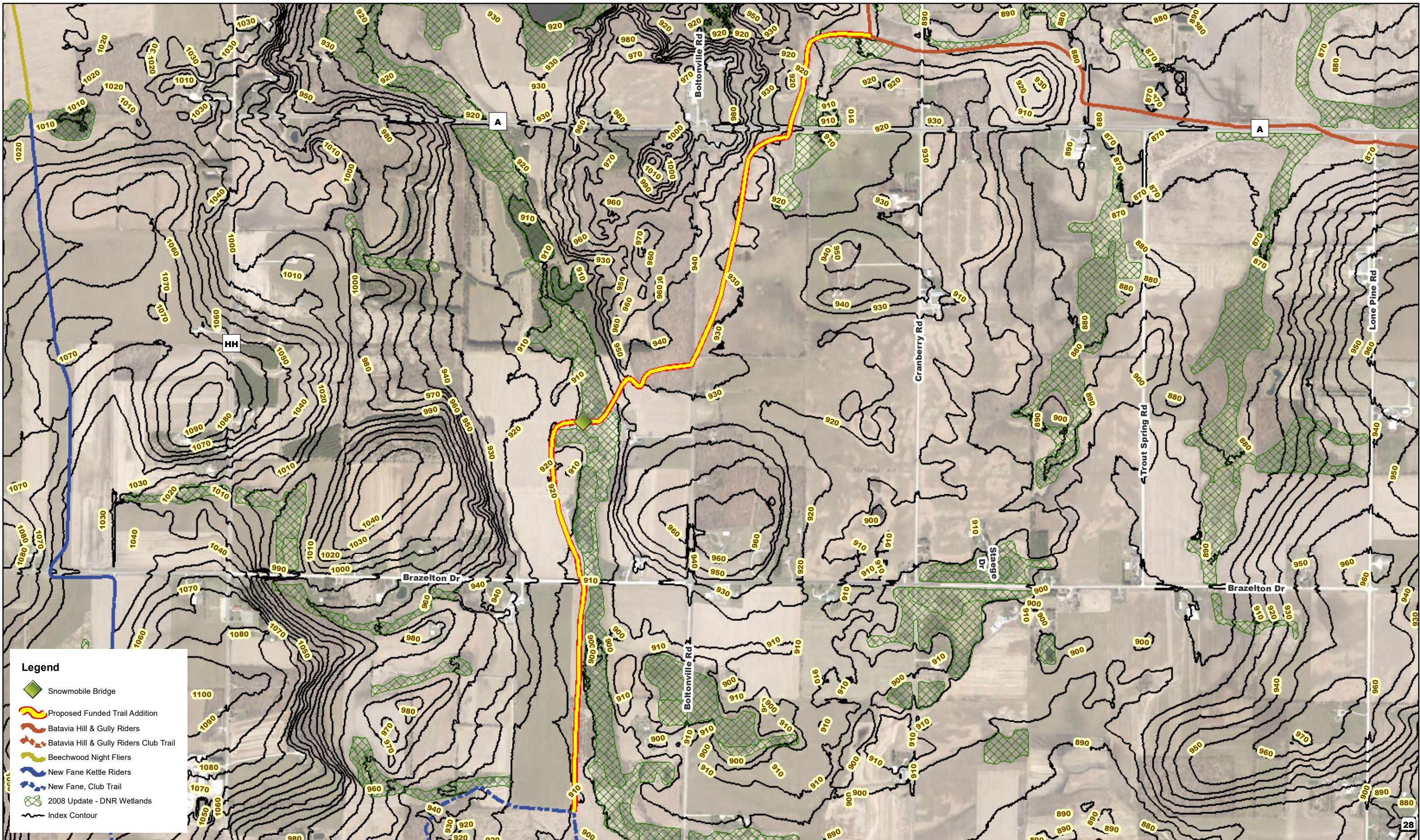
- Proposed Funded Trail Additions
- Adell Yetis
- Adell Yetis Club Trail
- Batavia Hill & Gully Riders
- Batavia, Club Trail
- Beechwood, Funded
- Beechwood, Club Trail
- Cascade Apollo Riders
- Cascade, Club Trail
- Club Trail
- Five Corners Snowmobile Club
- Five Corners Snowmobile Club Club Trail
- Greenbush Kettle Moraine Trailblazers
- Greenbush Kettle Moraine Trailblazers Club Trail
- Kiel Snowmobile Club
- Lakeshore Driftbusters
- Lakeshore Driftbusters Club Trail
- Louis Corners Sno-Birds
- Louis Corners Club Trail
- New Fane Kettle Riders
- New Fane, Club Trail
- Plymouth Snow Rangers
- Plymouth Snow Rangers Club Trail
- Sheboygan Falls Snowmobile Assn
- Snow Runners
- Snow Runners Club Trail
- State Trails
- United Sno-Byrds
- United Sno-Byrds Club Trail



**Sheboygan  
County,  
Wisconsin**







- Legend**
- Snowmobile Bridge
  - Proposed Funded Trail Addition
  - Batavia Hill & Gully Riders
  - Batavia Hill & Gully Riders Club Trail
  - Beechwood Night Fliers
  - New Fane Kettle Riders
  - New Fane, Club Trail
  - 2008 Update - DNR Wetlands
  - Index Contour



Prepared by the Sheboygan County Planning & Conservation Department  
 G:\Departments\Planning\Mapdocs\Snowmobile Maps for Project Applications\2021-2022 Project Maps\Map - Batavia Hill & Gully Trail Update.mxd

**Batavia Hill & Gully Riders Trail Update  
 Trail BHG Club-2**

