

NM-053 Sheboygan HG Club

## New Trail Ranking and Certification Worksheet

County: **Sheboygan**      Segment Name/Trail #: **HG Club 2**

**Qualification – All items in this section must be completed for valid new miles request.**

Gateways questions: Provide justification for selection below.	
<input checked="" type="checkbox"/> 1. Trail provides primary access route through a county and connects with another county's trails. <input checked="" type="checkbox"/> 2. Trail provides access from population centers to main access trail(s). <input checked="" type="checkbox"/> 3. Trail supports a high volume of use.	
Maps attached	<input checked="" type="checkbox"/> Provide GIS file (shapefile, etc) of county trail system with the requested trail segments included. <input checked="" type="checkbox"/> Provide countywide trail system map (printed/PDF) with the requested trail segments identified. <input checked="" type="checkbox"/> Provide aerial map (printed/PDF) for each segment. <input checked="" type="checkbox"/> Provide topographical map (printed/PDF) for each segment. Include Town-Range-Section.
<input checked="" type="checkbox"/> I certify that this trail meets or will meet all trail requirements in chs. 23 & 350, Wis. Stats. and ch. NR 50, Wis. Admin. Code	
<ol style="list-style-type: none"> <li>1. Minimum graded width for one-way trails is 6 feet and maximum 8 feet.</li> <li>2. Minimum graded width for two-way trails is 10 feet and maximum 12 feet.</li> <li>3. Minimum turning radius is 25 feet.</li> <li>4. Minimum cleared height above trail is 10 feet.</li> <li>5. Sustained grades and slopes will be a maximum of 25%.</li> <li>6. Approved, fully reflectorized snowmobile signs must be used.</li> <li>7. <b>Night travel on or in the vicinity of highways must be in the direction of vehicular traffic in the nearest lane unless:</b> <ul style="list-style-type: none"> <li>▪ <b>The snowmobile trail is located at least 40 feet from the roadway, or</b></li> <li>▪ <b>is separated from the roadway by a head lamp barrier.</b></li> </ul> </li> <li>8. Snowmobile trails shall not be routed over bodies of water. If stream crossings make bridging necessary, bridges should be at least 8 feet wide. If the bridge is located on an abandoned railroad grade, the bridge shall be a minimum of 10 feet wide free from obstruction.</li> </ol>	
Justification – Provide narrative description of the new trail with explanation for gateway qualification checked (#1, 2 or 3 above).	
<ol style="list-style-type: none"> <li>1. HG club 2 connects trails HG Trail 6 and Wis Corridor trail #1, a state trail. Trail HG 6 and Wis Corridor trail # 1 are both existing funded trails. HG 6 and Coord 1 connect Manitowoc and Sheboygan County. HG club 2 is located less than 1 mile from the Manitowoc/ Sheboygan County line and connects to trails that lead into Manitowoc County.</li> <li>2. HG club 2 is one of the main routes for east and west travel in northern Sheboygan County. The village of Howards Grove which is less than 5 miles away has gas, food, and drink accessible by trail. There is also a tavern/restaurant called Butch and Annie's Pine Grove located on trail HG club 2. This business serves food and drink. HG club 2 also accesses food and drink locations in the southern half of Manitowoc County via HG 6 and Coord 1.</li> <li>3. There are 2 trails that give the Howards Grove area riders the easiest access to the western part of Sheboygan County and southern half of Manitowoc County. HG Club-2 is one of them. This trail also sees heavy snowmobile activity since it is a main loop for the northern part of Sheboygan County. I live on this trail so I can testify how much traffic this trail sees. HG club 2 is groomed by 2 groomers. An AA2 class and an AAA2 class groomer. Every time a groomer goes out to the western section of our trail system or does a loop. HG club 2 gets groomed.</li> </ol>	

**Note.**

I have been trying to get this trail funded for many years. And every year it is 1 to 2 points short of being funded. I hope the rec council will see it in my club's best interest and the best interest of the snowmobilers of Sheboygan County and fund this trail. This year I have exhausted all my options to get as many points as possible. The county will be giving the 2 priority points to this trail, and I am gotten a 10-year easement from the landowners for another 2 points.

Thank you in advance, Larry Rietbrock.  
Trail master. Lakeshore Drift busters, Howards Grove Wis

Does the requested trail segment include any bridges or water crossings? Describe. Bridge structures should be added to the county's snowmobile bridge inventory if not already included.

Yes, there currently is 1 bridge that crosses a small creek. Bridge size is approx. 25 feet long. It is on the county's bridge list. Description 16-22-4 NWSW. Bridge is made of wooded poles, steel and planking and is in good condition.

**Ranking**

	Category	Possible Points	Actual Points
1.	Trail Longevity <i>(If multiple scenarios along the trail, lowest point situation applies. County must have a copy of said easements/LUA on file.)</i>	Max points: 3	
	Trail segment is located on public land or private land with permanent deeded easement.	3	
	Trail segment on private lands with land-use agreement (LUA) of 10 years or more.	2	2
	Trail segment is on private lands with LUA of 5 to 9 years.	1	
	LUA of less than 5 years.	0	
2.	Trail System <i>(choose one)</i>	Max points: 3	
	Trail segment connects directly to one or more neighboring county or state trails.	3	<del>3</del>
	Trail closes a gap between two existing funded trail segments, <i>or</i> extends existing funded trail 10 or more miles – excludes routes.	2	
	Trail segment is a part of the basic county trail system.	1	1
3.	Trail is isolated and does not connect to the county trail system.	0	
	The trail segment is in the following area of mean annual snowfall <a href="#">Mean Snowfall Map per County</a> (Source: Midwestern Climate Center)	Max points: 3	
	Greater than 60 inches	3	
	48 – 60 inches	2	
4.	Less than 48 inches	1	1
	The ratio of miles of trail to total square miles of land within the county: <a href="#">Snowmobile Trail Area Ratio per County</a>	Max points: 3	

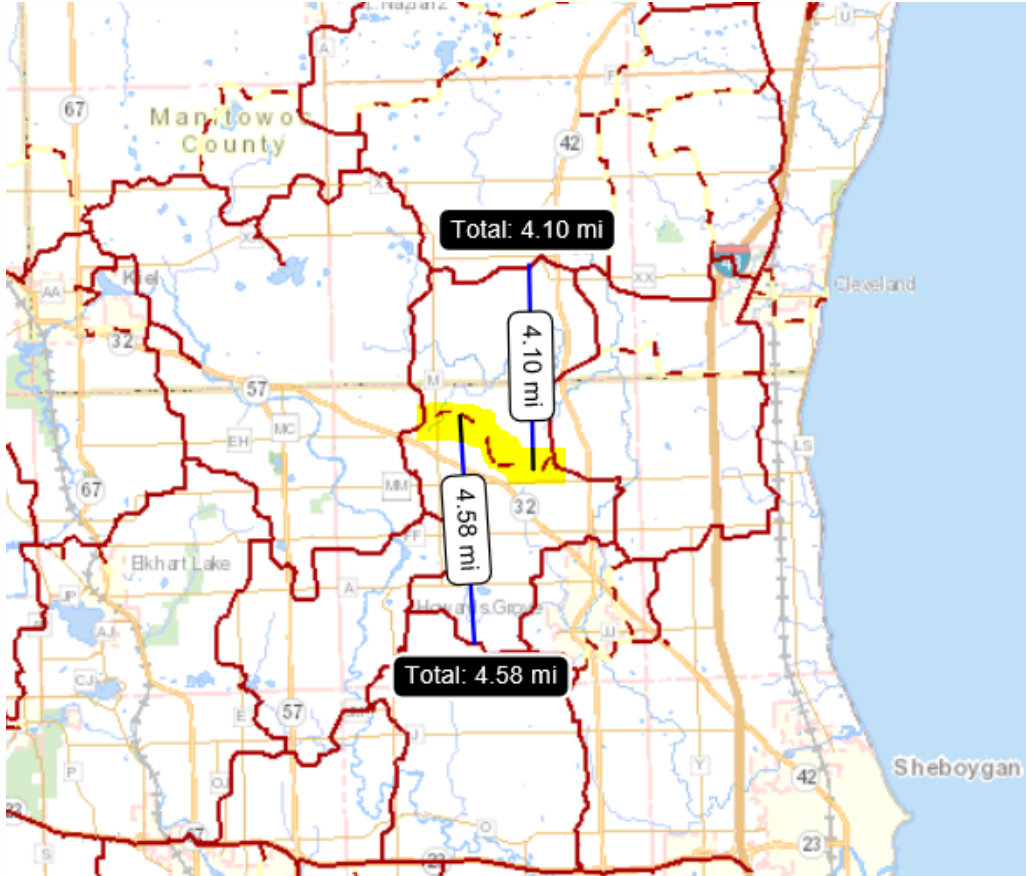
Trail is near county line but does not directly connect to another county.

	The ratio is within the grouping 01% - 30%	3	
	The ratio is within the grouping 31% - 40%	2	
	The ratio is within the grouping 41% - 50%	1	
	The ratio is in a grouping of over 50%	0	1
5.	Trail segment will be groomed with the following equipment. ( <i>choose one</i> )	Max points: 2	
	Class A-1, A-2 includes AAA and AA	2	2
	Class A-3, A-4 includes AAA and AA	1	
	Class B or C	0	
6.	County snowmobile trail coordinator priority points. <b>Note: County is allowed 2 points maximum for ALL trail segments submitted.</b>	Max points: 2	
	High priority.	2	2
	Medium priority.	1	
	No priority.	0	
7.	<b>Deductions if trail segment contains any of the following: (<i>check all that apply</i>)</b>	Max deduction: -8	
	New bridge, major bridge rehab or major trail rehab	-3	
	Trail segment is parallel (within 5 miles) to another funded segment	-3	3
	Trail runs to a body of water. ( <i>no deduction for use of a bridge to cross</i> )	-2	
(Maximum Points: 16) <b>TOTAL</b>		<del>8</del>	<del>XX</del>

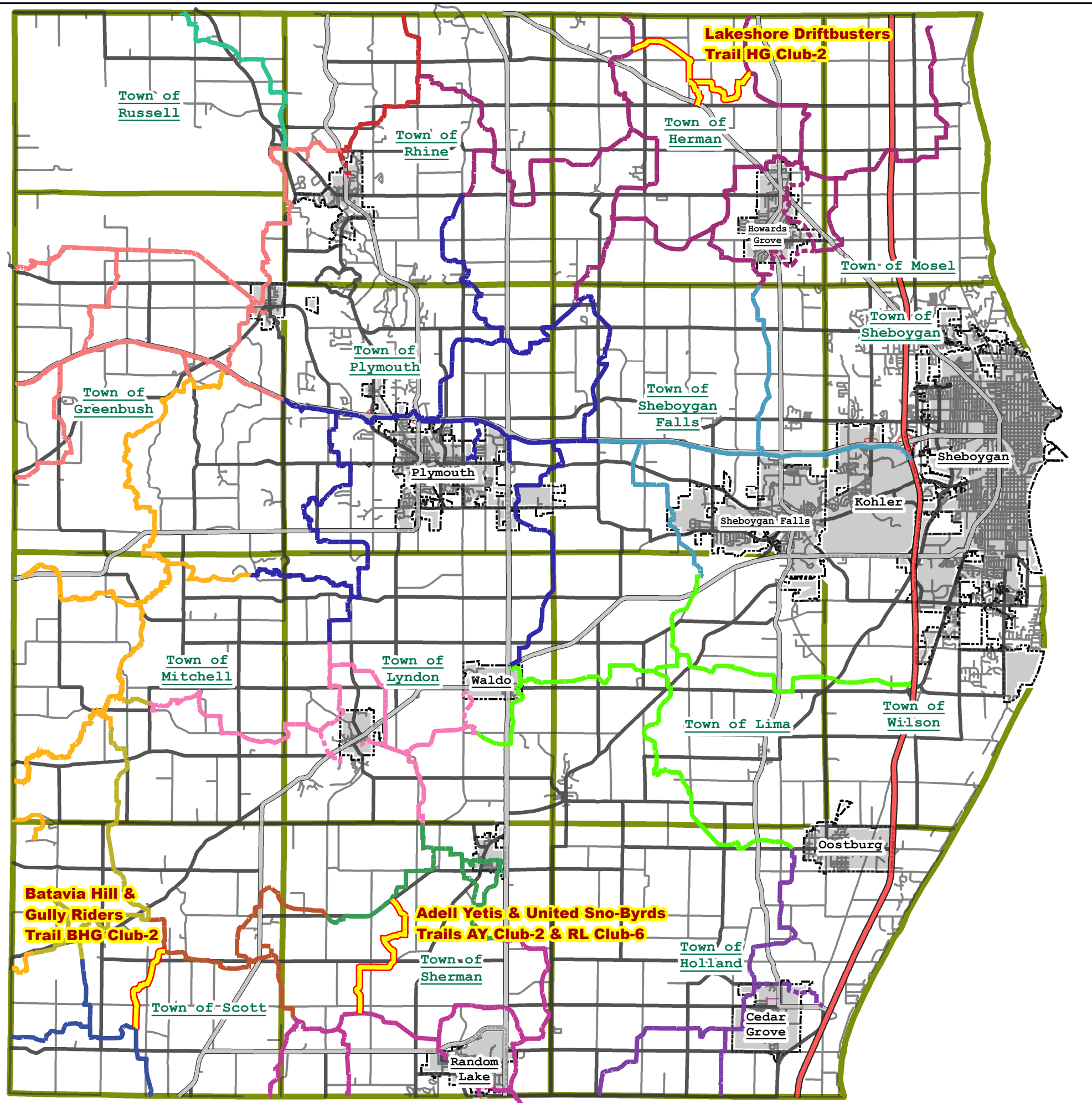
4

**Please verify that all sections of this form have been completed,  
and all required attachments included prior to submittal.**






Last revised: Mar. 2021



# A Map of 2021-2022 Snowmobile Trails Sheboygan County, WI



## Legend

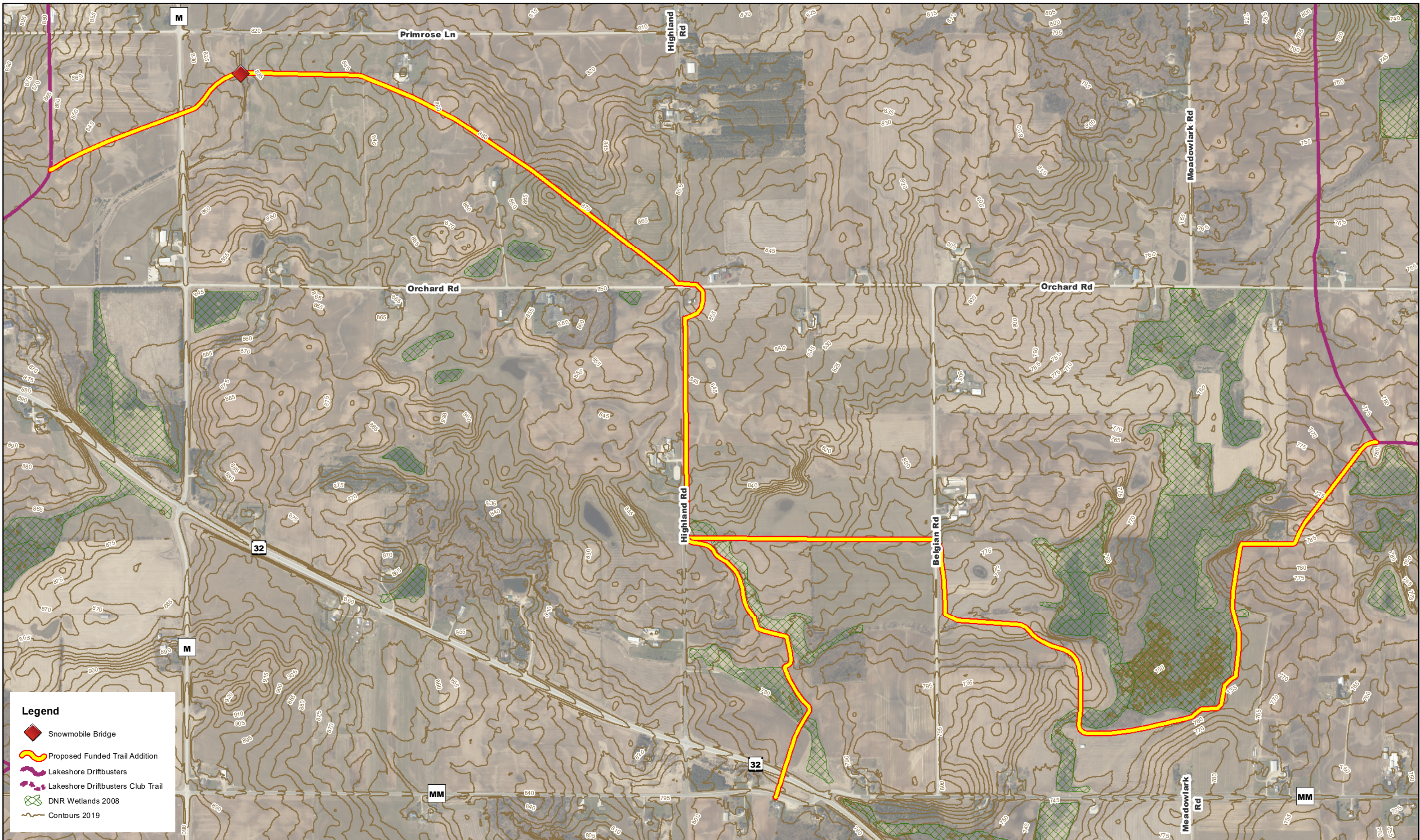
-  Proposed Funded Trail Additions
-  Adell Yetis
-  Adell Yetis Club Trail
-  Batavia Hill & Gully Riders
-  Batavia, Club Trail
-  Beechwood, Funded
-  Beechwood, Club Trail
-  Cascade Apollo Riders
-  Cascade, Club Trail
-  Club Trail
-  Five Corners Snowmobile Club
-  Five Corners Snowmobile Club Club Trail
-  Greenbush Kettle Moraine Trailblazers
-  Greenbush Kettle Moraine Trailblazers Club Trail
-  Kiel Snowmobile Club
-  Lakeshore Driftbusters
-  Lakeshore Driftbusters Club Trail
-  Louis Corners Sno-Birds
-  Louis Corners Club Trail
-  New Fane Kettle Riders
-  New Fane, Club Trail
-  Plymouth Snow Rangers
-  Plymouth Snow Rangers Club Trail
-  Sheboygan Falls Snowmobile Assn
-  Snow Runners
-  Snow Runners Club Trail
-  State Trails
-  United Sno-Byrds
-  United Sno-Byrds Club Trail



**Sheboygan  
County,  
Wisconsin**







### Lakeshore Driftbusters Trail Update Trail HG Club-2

