

# WISCONSIN DEPARTMENT OF NATURAL RESOURCES

## LAKE SUPERIOR STATE-LICENSED COMMERCIAL FISHERY REPORT 2025

**DRAY CARL**

**DNR Lake Superior Fisheries Management Team**

### **BACKGROUND**

The Wisconsin waters of Lake Superior are relatively shallow with a high degree of habitat complexity (e.g., Apostle Islands) compared to much of Lake Superior, and this habitat supports a highly productive ecosystem and commercial fishery. Over the past three decades, the Wisconsin Department of Natural Resources (DNR) has moved toward a smaller and better-regulated commercial fishery. Today, the lake whitefish and cisco (lake herring) fisheries comprise the majority of the catch and value of the Lake Superior commercial fishery, and these species are targeted using a combination of trap nets and gill nets. Since the reaffirmation of Treaty fishing rights in the Ceded Territory, the DNR has maintained a Lake Superior Fishing Agreement with both Red Cliff and Bad River Bands of Lake Superior Chippewa, which stipulates several management practices for fisheries in Wisconsin waters of Lake Superior. The Agreement includes methods for harvest limitations, commercial gear limitations, commercial fishing seasons, designated refuges, restricted-use areas, law enforcement patrols, commercial monitoring, and exchange of data and information for all parties.

State-licensed commercial fishers in Wisconsin waters of Lake Superior primarily operate out of ports in Bayfield, Cornucopia and Port Wing. Commercial fishers report all harvest and fishing effort to the DNR, and in addition, team members collect fish biological data onboard commercial fishing vessels and dockside at commercial fishing facilities. Wisconsin DNR commercial fishing management is built on three principles: limited entry, annual harvest and gear limitations, and individual transferable quotas.

Since 1997, there have been ten total licenses available for commercial fishing on Lake Superior. A commercial fishing license is required for any commercial fishing activity, which restricts the size of the commercial fleet (i.e., limited entry) and helps maintain the value of a commercial fishing license.

Commercial fishers are limited by how, when and where they can target and harvest Lake Superior fish. Three main types of gear are allowed in depths less than 330 feet: small-mesh gill nets, large-mesh gill nets and trap nets. Small-mesh gill nets are generally used to target cisco and chub species (deepwater ciscoes) and can be between 2 3/8-inch and 3-inch mesh size. Large-mesh gill nets are generally used to target lake whitefish and siscowet (fats) and can be 4 7/16-inch mesh size or greater. Trap nets are generally used to target lake whitefish and can be fished with the pot end of the net in 90 feet depth or shallower. Small-mesh gill nets may be fished all year. However, for other gear, the commercial fishing season is split into three periods: Period 1 (Nov. 28 to March 31), Period 2 (April 1 to May 31) and Period 3 (June 1 to Sept. 30). Large-mesh gill nets inside 330 feet are only allowed during these periods, and trap nets are only allowed in Periods 2 and 3. Rules also apply to the height of gill nets, how often nets should be checked or emptied, how nets should be marked and labeled and more. Pound nets (smaller, entrapment-style nets) and 1.5-inch gill nets are sometimes used for targeting rainbow smelt in the spring. Commercial fishing operations are prohibited within the boundaries of two large fishing refuges, Gull Island and Devils Island, and are either prohibited or further limited within ten restricted-use areas (Figure 1).

The amount of harvest and targeted fishing effort is also limited for commercial fishing in the Wisconsin waters of Lake Superior. Fishers may only operate ten total trap nets at a time, and the amount of large-mesh gill net footage they are allowed to set annually is determined by lake trout quotas and catch rates observed by onboard commercial monitoring. This provides an incentive for commercial fishers to avoid catching lake trout in gill nets (more lake trout means less gill net footage is allowed in following years), ultimately creating an upper limit to the gill net harvest of other fish found in similar habitats, like lake whitefish. Lake whitefish have a minimum size limit of 17 inches. Lake trout must also be less than or equal to 25 inches to harvest out of trap nets. Annually, a total allowable catch (TAC) is set for lake trout in both management units (WI-1 and WI-2), which represents the maximum number of lake trout that can be harvested by all fisheries (i.e., commercial, recreational, home-use, assessment). One-third of the state (non-tribal) allotment of lake trout is allocated to commercial fishers, and each commercial fisher receives a specific number of individual lake trout jaw tags. When individual commercial fishers run out of either lake trout jaw tags or allocated gill net footage, they can not set any trap nets or large-mesh gill nets in depths less than 330 feet for the remainder of the commercial fishing season. Cisco harvest is limited with an annual TAC and commercial fishing quota. The TAC is determined using hydroacoustic survey estimates of cisco spawning stock biomass. Commercial cisco harvest is limited by the commercial fishing quota and is monitored closely. A portion of the overall cisco TAC is set aside as an allowance for recreational harvest and assessment catch. Total effort for large-mesh and small-mesh gill nets fished in depths greater than 330 feet is not regulated and may be fished at any time of the year.

Wisconsin state-licensed commercial fishing is managed using individual transferable quotas (ITQs). This is a common strategy in commercial fishing management and means that the total commercial fishing quota (e.g., lake trout, cisco) or total allowable large-mesh gill net footage is split evenly among the ten commercial fishing licenses. Afterward, fishers are free to trade or sell their individual shares to other license holders.

## METHODS

This report only includes state-licensed commercial fishing effort and harvest. Daily harvest and effort (feet of gill net or trap net lifts) are reported by state-licensed commercial fishers. Additional information provided includes the area fished (reporting grids; Figure 1), gear specifications and depths fished.

All effort and harvest statistics were summarized by calendar year, with the exception of the lake trout harvest number and quota in Figure 5. The lake trout harvest number and quota in Figure 5 are summarized by fishing year, which runs from Nov. 28 to Sept. 30 of the following year and is used to track the harvest of the lake trout quota. Commercial fishers generally report harvest in dressed weight, and dressed weights are used in this report. Any harvest reported by commercial fishers as round weight was converted to dressed weight using known conversion factors for this report, with the exception of cisco eggs and rainbow smelt. Cisco harvest during the targeted cisco season (October–December) is tracked and reported in round weight in Figure 6 because the cisco quota is regulated with round weight. Beginning in 2025, an annual cisco quota was implemented rather than the targeted season quota.

Effort for gill nets is reported in total feet of net lifted. Effort for trap and pound nets is reported as the number of lifts, and a lift is defined as lifting and emptying the entire pot end of the net.

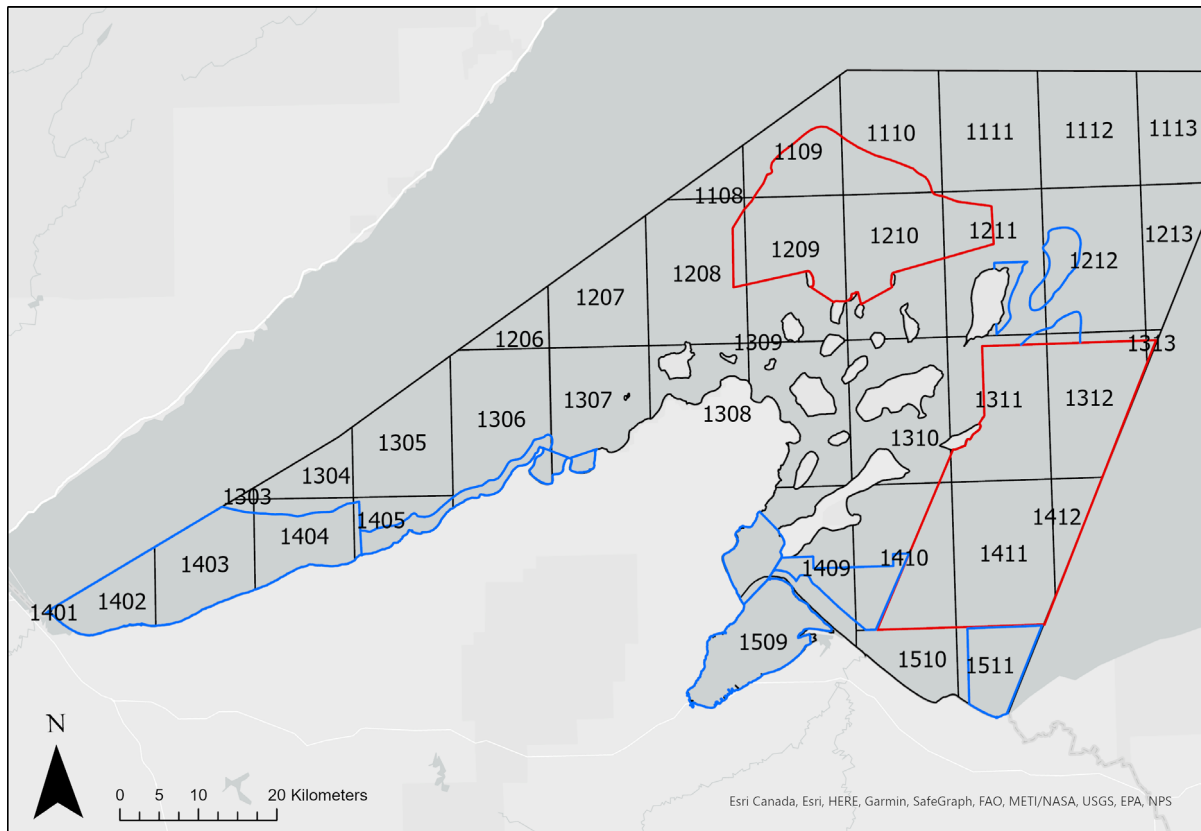


Figure 1. Wisconsin waters of Lake Superior and management units WI-1 (Western Arm) and WI-2 (Apostle Islands Region; line between Grid 1306 and 1307 separates units), reporting grids used for commercial harvest reporting (black lines and 4-digit numbers), fish refuges (commercial fishing prohibited, red lines) and restricted-use areas (commercial fishing prohibited or limited, blue lines).

## RESULTS

During the 2025 calendar year, state-licensed commercial fishermen reported annual yields of 498,464 pounds of lake whitefish, 28,684 pounds of lake trout, 103,525 pounds of siscowet, 202,298 pounds of cisco, 2,554 pounds of cisco eggs, 60,087 pounds of chubs, 8,827 pounds of rainbow smelt and 3,310 pounds of burbot (Figure 2, Table 1).

Large-mesh gill net effort targeting lake whitefish (< 330 feet depth) totaled 921,400 feet and yielded 148,170 pounds of lake whitefish, 17,108 pounds of lake trout and 29,931 pounds of siscowet (Figures 3 and 4, Table 2). Large-mesh gill net effort targeting siscowet (> 330 feet depth) totaled 341,850 feet of gill net yielding 43,882 pounds (Figures 3 and 4, Table 3).

Small-mesh gill net effort targeting cisco (floated) totaled 214,550 feet and yielded 157,831 pounds of cisco and 2,545 pounds of cisco eggs (Figures 3 and 4, Table 4). Small-mesh gill net effort primarily targeting chubs (> 210 feet depth) totaled 1,501,300 feet and yielded 59,829 pounds of chubs, 42,386 pounds of cisco and 27,673 pounds of siscowet (Figures 3 and 4, Table 5).

State-licensed fishers made 837 trap net lifts, yielding 349,990 pounds of lake whitefish, 9,575 pounds of lake trout, 1,999 pounds of siscowet, 1,475 pounds of cisco and 1,761 pounds of burbot (Figures 3 and 4, Table 6). State-licensed fishers also made 48 pound net lifts yielding 8,827 pounds of rainbow smelt (Figures 3 and 4, Table 7).

Commercial fishers harvested 2,082 of the 4,000 lake trout quota in management unit WI-1 and 5,734 of the 7,500 lake trout quota in management unit WI-2 in 2025 (Figure 5). Commercial fishers also harvested 242,855 round pounds of the 890,000-pound cisco quota in 2025 (Figure 6).

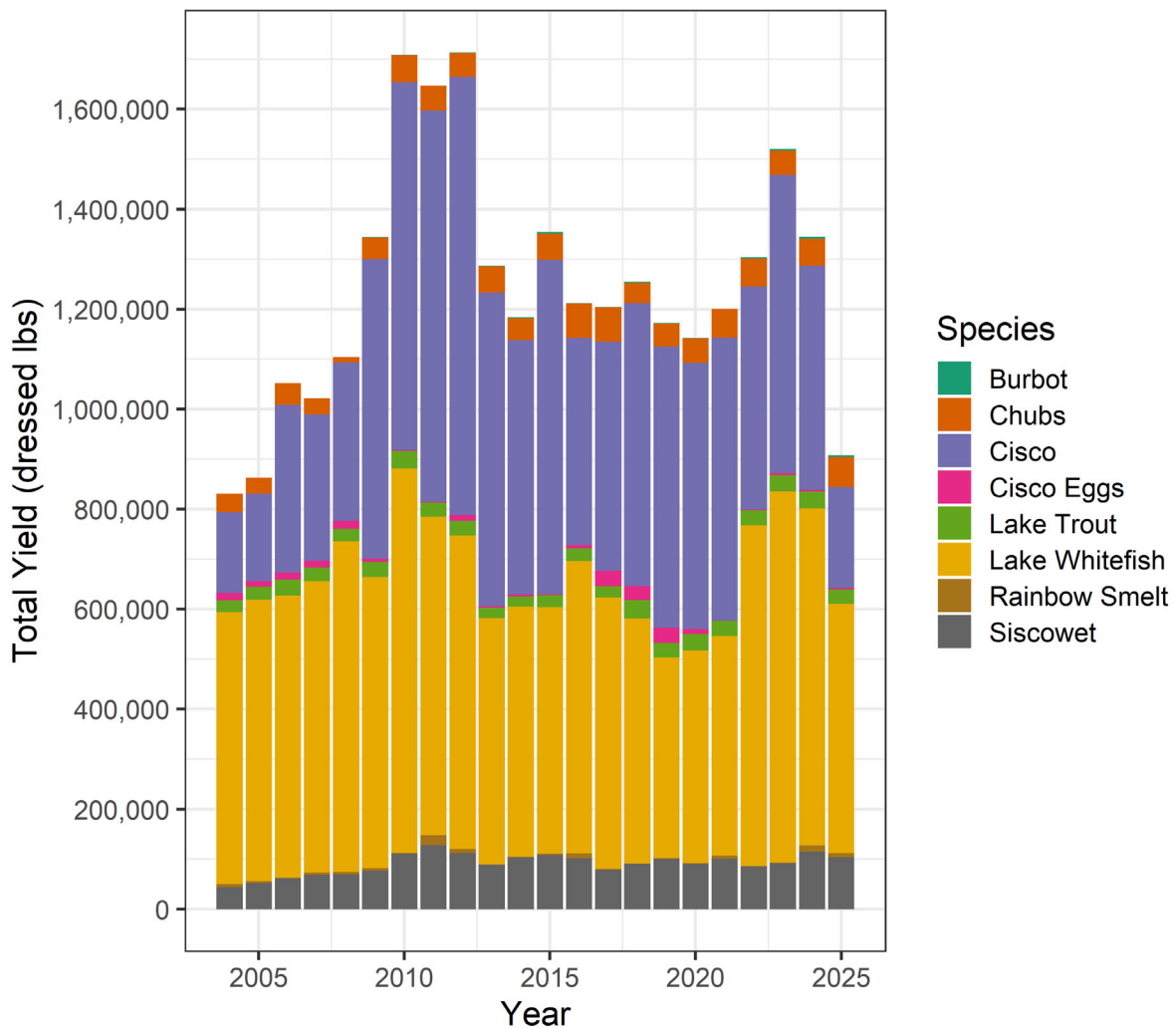


Figure 2. Total reported state-licensed commercial yield of the primary eight commercially viable species (represented by different colors) in Wisconsin waters of Lake Superior from 2004 to 2025 from all allowable gear types. Yield is expressed in dressed pounds, except for cisco eggs and rainbow smelt.

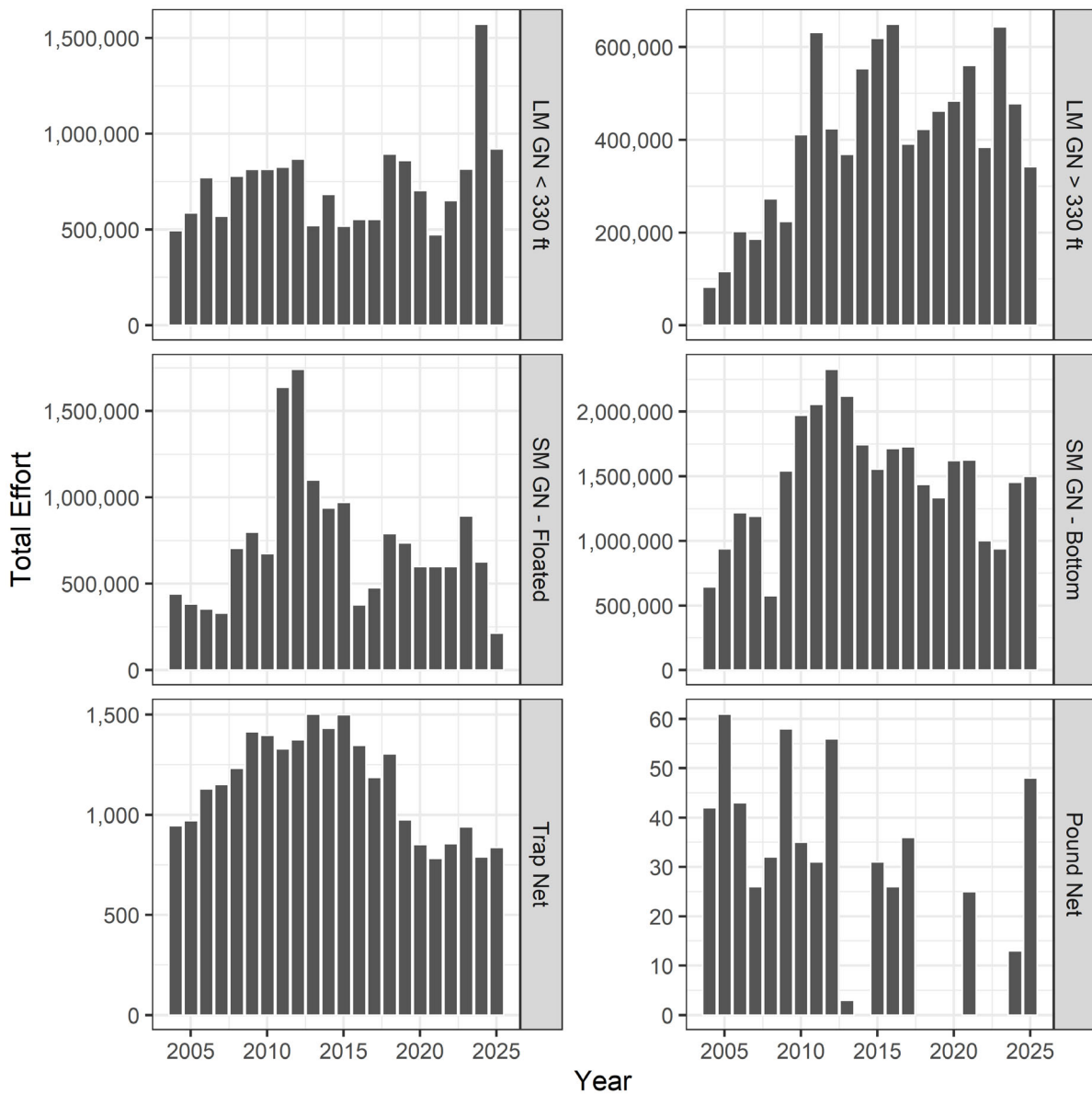


Figure 3. Total reported effort fished by state-licensed commercial fishers in Wisconsin waters of Lake Superior from 2004 to 2025 by gear categorization. Effort for large-mesh gill nets and small-mesh gill nets is represented in total footage of gill net, and effort for trap and pound nets is represented as number of lifts. A lift is defined as the act of lifting up and emptying the pot-end of the trap or pound net. Large-mesh gill net effort less than 330 feet is generally targeting lake whitefish, and large-mesh gill net effort greater than 330 feet is generally targeting siscowet. Small-mesh gill net effort is split between floated nets (targeting cisco in the fall) and bottom-set nets (targeting deepwater chubs > 210 feet).



Figure 4. Total reported state-licensed commercial yield of eight commercial species in Wisconsin waters of Lake Superior from 2004 to 2025. Colors represent the gear type used during yield (see Figure 3). Harvest is expressed in dressed pounds, except for cisco eggs and rainbow smelt.

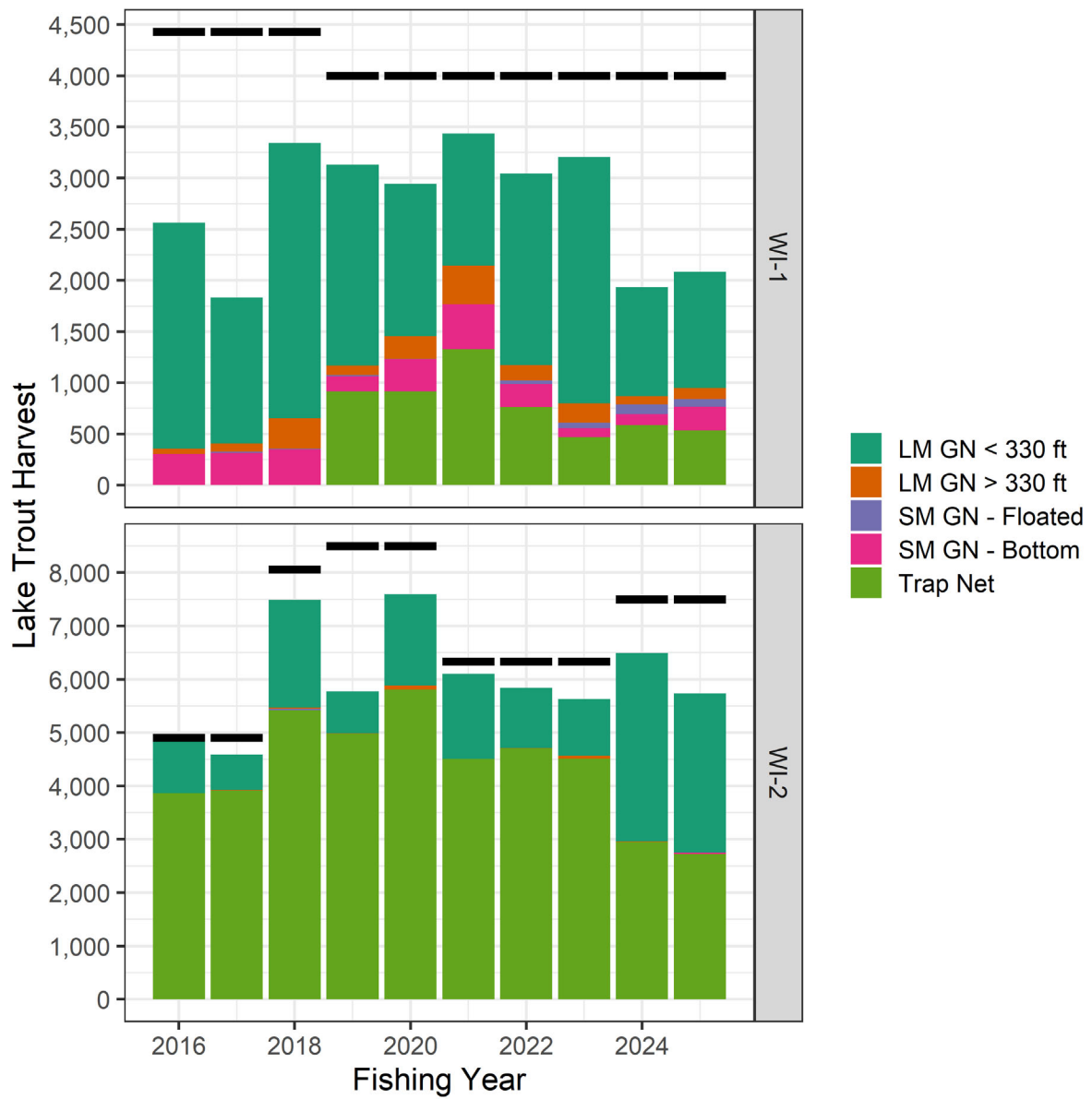


Figure 5. Total reported state-licensed commercial harvest of Lake Trout in Wisconsin waters of Lake Superior from fishing year 2016 (Nov. 28, 2015 - Sep. 30, 2016) to 2025 (Nov. 28, 2024 - Sep. 30, 2025) within each management unit. Harvest is expressed as the actual number of lake trout. Colors represent the gear type used during harvest. Black lines represent the quota allotted to the commercial fishery for each fishing year within each management unit.

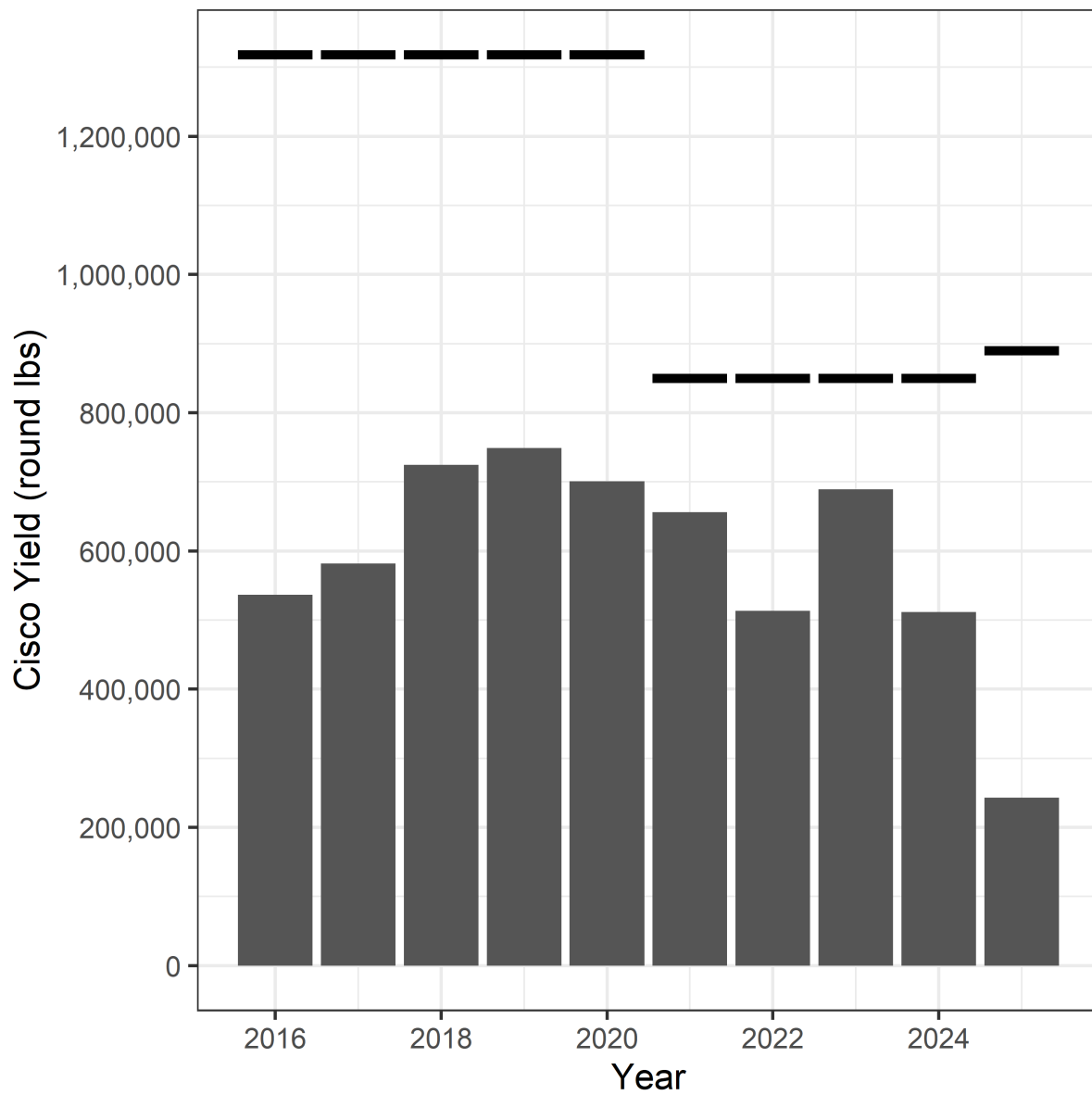


Figure 6. Total reported state-licensed commercial yield of cisco (lake herring) during the targeted cisco season (October to December) in Wisconsin waters of Lake Superior from 2016 (first year of quota) to 2024. In 2025, the cisco quota changed to a total annual quota, which is represented in this figure. Yield is expressed as round pounds of cisco. Black lines represent the quota allotted to the commercial fishery in a given year in round pounds (targeted season 2016-2024, annual 2025-present).

**Table 1. All Gears** Total reported state-licensed commercial yield of lake whitefish, cisco (lake herring), lake trout, siscowet, chubs, cisco eggs (roe), rainbow smelt and burbot from all gear in Wisconsin waters of Lake Superior during the 2025 calendar year. All yield is expressed in dressed weight, except for cisco eggs and rainbow smelt. See Figure 1 for locations of statistical grids.

Gear	Month	Grid	Lake Whitefish	Cisco	Lake Trout	Siscowet	Chubs	Cisco Eggs	Rainbow Smelt	Burbot	
All Gears	January	All Grids	1,731	251	79	417	--	--	--	70	
	March	All Grids	5,322	767	318	5,532	2,185	--	--	36	
	April	All Grids	47,323	3,280	3,859	10,734	9,393	--	2,047	597	
	May	All Grids	19,221	8,423	2,489	12,521	10,127	--	6,780	294	
	June	All Grids	62,156	2,958	2,915	11,840	3,649	--	--	336	
	July	All Grids	123,172	737	6,426	13,084	2,445	--	--	172	
	August	All Grids	116,841	405	3,532	9,887	1,116	--	--	260	
	September	All Grids	117,391	9	7,683	13,173	134	--	--	914	
	October	All Grids	--	982	--	10,660	20,501	--	--	286	
	November	All Grids	--	57,207	--	12,539	10,532	362	--	260	
	December	All Grids	5,307	127,279	1,382	3,138	4	2,192	--	85	
	All Months	1108		147	--	3	1,922	--	--	--	--
		1208		10,100	7,917	598	1,647	76	--	--	67
		1209		173,126	795	10,098	3,787	--	--	--	321
		1210		1,232	--	282	79	--	--	--	12
		1211		8,931	--	37	3	--	--	--	9
		1304		--	1,437	6	3,425	14,309	--	--	274
		1305		9,004	47,644	4,662	47,731	36,103	2,554	--	458
		1306		11,863	4,897	2,647	34,651	9,479	--	--	94
		1307		75,730	138,907	2,517	7,431	114	--	8,827	933
		1308		92,111	60	2,063	605	--	--	--	550
		1309		27,659	281	797	142	1	--	--	207
		1310		47,138	25	3,185	1,793	4	--	--	254
		1311		4,258	3	178	80	--	--	--	26
		1405		560	--	245	75	--	--	--	11
		1409		22,817	331	348	123	--	--	--	30
		1410		13,786	--	1,018	30	--	--	--	64
	All Grids		498,464	202,298	28,684	103,525	60,087	2,554	8,827	3,310	

**Table 2. Large-Mesh Gill Net < 330 ft.** Total reported state-licensed commercial effort (feet of gill net) and yield of lake whitefish, cisco (lake herring), lake trout, siscowet, chubs, rainbow smelt and burbot from large-mesh gill nets less than 330 feet in Wisconsin waters of Lake Superior during the 2025 calendar year. All yield is expressed in dressed weight, except for rainbow smelt. See Figure 1 for locations of statistical grids.

Gear	Month	Grid	Effort	Lake Whitefish	Cisco	Lake Trout	Siscowet	Chubs	Rainbow Smelt	Burbot
LM GN < 330 ft	January	1307	5,000	1,731	251	79	417	--	--	70
	March	1307	4,000	776	12	88	109	--	--	6
		1310	3,375	1,500	--	50	10	--	--	10
		1311	6,750	3,046	--	85	33	--	--	16
		All Grids	14,125	5,322	12	223	152	--	--	32
	April	1305	21,000	1,575	--	1,298	980	--	--	25
		1307	96,250	28,804	120	1,328	784	--	--	325
		1309	23,625	7,330	42	305	14	--	--	89
		1310	20,250	8,181	--	407	69	--	--	103
		1311	3,375	1,212	3	93	47	--	--	10
		1405	3,500	180	--	185	55	--	--	3
		All Grids	168,000	47,283	165	3,616	1,949	--	--	555
	May	1305	21,500	1,525	--	667	290	--	--	14
		1309	6,125	370	--	112	100	1	--	16
		1310	18,000	1,597	--	383	551	--	--	14
		1405	3,500	380	--	60	20	--	--	8
		1409	31,625	1,676	--	107	109	--	--	23
		All Grids	80,750	5,548	--	1,329	1,070	1	--	75
	June	1305	37,500	1,508	2	544	3,490	10	--	2
		1306	2,100	35	--	10	150	3	--	--
		1309	2,875	202	--	13	--	--	--	--
		1310	85,125	8,009	21	938	1,036	3	--	48
		1409	2,875	108	--	2	5	--	--	--
		All Grids	130,475	9,862	23	1,507	4,681	16	--	50
	July	1208	11,250	377	2	355	745	9	--	--

	<b>1209</b>	104,000	29,270	1	2,800	487	--	--	--
	<b>1305</b>	65,600	1,917	--	305	3,645	43	--	--
	<b>1306</b>	14,400	265	--	21	1,425	16	--	--
	<b>1310</b>	7,125	1,146	--	40	102	1	--	--
	<b>All Grids</b>	202,375	32,975	3	3,521	6,404	69	--	--
<b>August</b>	<b>1208</b>	6,500	--	--	--	480	2	--	--
	<b>1305</b>	41,400	672	--	220	2,375	27	--	--
	<b>1306</b>	23,100	49	--	28	1,702	13	--	--
	<b>1307</b>	13,000	3	--	5	1,200	5	--	--
	<b>All Grids</b>	84,000	724	--	253	5,757	47	--	--
<b>September</b>	<b>1209</b>	139,500	37,085	--	5,478	3,058	--	--	20
	<b>1210</b>	7,875	1,232	--	282	79	--	--	12
	<b>1305</b>	28,000	1,190	1	186	1,465	14	--	15
	<b>1306</b>	8,100	2	--	8	650	5	--	--
	<b>1307</b>	37,200	6	--	27	3,605	59	--	--
	<b>All Grids</b>	220,675	39,515	1	5,981	8,857	78	--	47
<b>December</b>	<b>1305</b>	2,000	598	22	90	184	--	--	4
	<b>1306</b>	14,000	4,612	125	509	459	--	--	29
	<b>All Grids</b>	16,000	5,210	147	599	643	--	--	33
<b>All Months</b>	<b>1208</b>	17,750	377	2	355	1,225	11	--	--
	<b>1209</b>	243,500	66,355	1	8,278	3,545	--	--	20
	<b>1210</b>	7,875	1,232	--	282	79	--	--	12
	<b>1305</b>	217,000	8,985	25	3,310	12,429	94	--	61
	<b>1306</b>	61,700	4,963	125	576	4,386	37	--	29
	<b>1307</b>	155,450	31,320	382	1,527	6,116	64	--	401
	<b>1309</b>	32,625	7,902	42	430	114	1	--	105
	<b>1310</b>	133,875	20,433	21	1,818	1,768	4	--	174
	<b>1311</b>	10,125	4,258	3	178	80	--	--	26
	<b>1405</b>	7,000	560	--	245	75	--	--	11
	<b>1409</b>	34,500	1,784	--	109	114	--	--	23
	<b>All Grids</b>	921,400	148,170	601	17,108	29,931	211	--	862

**Table 3. Large-Mesh Gill Net > 330 ft.** Total reported state-licensed commercial effort (feet of gill net) and yield of lake whitefish, cisco (lake herring), lake trout, siscowet, chubs, rainbow smelt and burbot from large-mesh gill nets greater than 330 feet in Wisconsin waters of Lake Superior during the 2025 calendar year. All yield is expressed in dressed weight, except for rainbow smelt. See Figure 1 for locations of statistical grids.

Gear	Month	Grid	Effort	Lake Whitefish	Cisco	Lake Trout	Siscowet	Chubs	Rainbow Smelt	Burbot
<b>LM GN &gt; 330 ft</b>	<b>March</b>	<b>1305</b>	23,400	--	--	60	3,685	5	--	--
	<b>April</b>	<b>1305</b>	7,800	--	--	8	700	--	--	6
		<b>1306</b>	42,600	--	--	147	4,775	8	--	--
		<b>1307</b>	4,000	40	--	--	580	5	--	--
		<b>All Grids</b>	54,400	40	--	155	6,055	13	--	6
	<b>May</b>	<b>1306</b>	48,000	--	--	94	6,110	1	--	--
	<b>June</b>	<b>1306</b>	39,600	2	--	51	3,565	5	--	--
	<b>July</b>	<b>1108</b>	11,250	147	--	3	1,922	--	--	--
		<b>1306</b>	29,000	2	--	8	2,765	1	--	--
		<b>All Grids</b>	40,250	149	--	11	4,687	1	--	--
	<b>August</b>	<b>1306</b>	29,000	2	--	--	2,605	1	--	--
	<b>September</b>	<b>1306</b>	33,900	--	--	16	3,565	11	--	--
	<b>October</b>	<b>1305</b>	30,300	--	--	--	4,845	5	--	--
		<b>1306</b>	14,200	--	--	--	1,740	2	--	--
		<b>All Grids</b>	44,500	--	--	--	6,585	7	--	--
	<b>November</b>	<b>1305</b>	25,500	--	--	--	6,130	2	--	--
	<b>December</b>	<b>1305</b>	3,300	--	5	15	895	--	--	--
	<b>All Months</b>	<b>1108</b>	11,250	147	--	3	1,922	--	--	--
		<b>1305</b>	90,300	--	5	83	16,255	12	--	6
		<b>1306</b>	236,300	6	--	316	25,125	29	--	--
		<b>1307</b>	4,000	40	--	--	580	5	--	--
		<b>All Grids</b>	341,850	193	5	402	43,882	46	--	6

**Table 4. Small-Mesh Gill Net - Floated** Total reported state-licensed commercial effort (feet of gill net) and yield of lake whitefish, cisco (lake herring), lake trout, siscowet, chubs, cisco eggs (roe), rainbow smelt and burbot from floated, small-mesh gill nets in Wisconsin waters of Lake Superior during the 2025 calendar year. All yield is expressed in dressed weight, except for cisco eggs and rainbow smelt. See Figure 1 for locations of statistical grids.

Gear	Month	Grid	Effort	Lake Whitefish	Cisco	Lake Trout	Siscowet	Chubs	Cisco Eggs	Rainbow Smelt	Burbot
SM GN - Floated	November	1208	12,750	--	7,583	--	--	--	--	--	--
		1305	17,000	--	4,310	--	--	--	362	--	--
		1307	70,400	--	43,659	--	24	--	--	--	--
		All Grids	100,150	--	55,552	--	24	--	362	--	--
	December	1305	44,000	--	18,410	641	17	--	2,183	--	--
		1307	70,400	87	83,868	4	--	--	--	--	--
		All Grids	114,400	87	102,278	645	17	--	2,183	--	--
	All Months	1208	12,750	--	7,583	--	--	--	--	--	--
		1305	61,000	--	22,720	641	17	--	2,545	--	--
		1307	140,800	87	127,527	4	24	--	--	--	--
		All Grids	214,550	87	157,831	645	41	--	2,545	--	--

**Table 5. Small-Mesh Gill Net - Bottom** Total reported state-licensed commercial effort (feet of gill net) and yield of lake whitefish, cisco (lake herring), lake trout, siscowet, chubs, cisco eggs (roe), rainbow smelt and burbot from bottom-set, small-mesh gill nets in Wisconsin waters of Lake Superior during the 2025 calendar year. All yield is expressed in dressed weight, except for cisco eggs and rainbow smelt. See Figure 1 for locations of statistical grids.

Gear	Month	Grid	Effort	Lake Whitefish	Cisco	Lake Trout	Siscowet	Chubs	Cisco Eggs	Rainbow Smelt	Burbot	
SM GN - Bottom	March	1305	54,000	--	755	35	1,695	2,180	--	--	4	
		April	1305	103,000	--	1,875	74	1,755	5,800	--	--	28
			1306	80,000	--	1,240	14	975	3,580	--	--	8
	All Grids		183,000	--	3,115	88	2,730	9,380	--	--	36	
	May	1305	176,000	5	5,120	310	2,955	5,945	--	--	33	
		1306	112,000	3	3,110	179	2,350	4,180	--	--	8	
		All Grids	288,000	8	8,230	489	5,305	10,125	--	--	41	
	June	1208	24,000	2	325	112	380	65	--	--	--	
		1305	98,000	4	1,095	56	2,085	2,380	--	--	2	
		1306	40,000	--	315	9	1,020	1,183	--	--	--	
		All Grids	162,000	6	1,735	177	3,485	3,628	--	--	2	
	July	1305	110,000	--	560	20	1,160	1,905	--	--	--	
		1306	23,000	--	105	4	360	470	--	--	--	
		All Grids	133,000	--	665	24	1,520	2,375	--	--	--	
	August	1304	33,000	--	170	6	360	580	--	--	--	
		1305	33,000	--	225	10	435	488	--	--	--	
		All Grids	66,000	--	395	16	795	1,068	--	--	--	
	September	1307	4,500	--	5	1	100	45	--	--	--	
	October	1304	162,000	--	522	--	1,730	9,174	--	--	142	
		1305	174,000	--	460	--	2,345	11,320	--	--	144	
		All Grids	336,000	--	982	--	4,075	20,494	--	--	286	
	November	1304	68,000	--	745	--	1,335	4,555	--	--	132	
		1305	149,000	--	910	--	5,050	5,975	--	--	128	
		All Grids	217,000	--	1,655	--	6,385	10,530	--	--	260	
	December	1305	47,000	10	13,894	123	1,550	4	9	--	52	
		1307	10,800	--	10,955	--	33	--	--	--	--	
		All Grids	57,800	10	24,849	123	1,583	4	9	--	52	
	All Months	1208	24,000	2	325	112	380	65	--	--	--	
		1304	263,000	--	1,437	6	3,425	14,309	--	--	274	
		1305	944,000	19	24,894	628	19,030	35,997	9	--	390	
		1306	255,000	3	4,770	206	4,705	9,413	--	--	16	
		All Grids	1,501,300	24	42,386	953	27,673	59,829	9	--	681	

**Table 6. Trap Nets** Total reported state-licensed commercial effort (lifts) and yield of lake whitefish, cisco (lake herring), lake trout, siscowet, chubs, rainbow smelt and burbot from trap nets in Wisconsin waters of Lake Superior during the 2025 calendar year. All yield is expressed in dressed weight except rainbow smelt. See Figure 1 for locations of statistical grids.

Gear	Month	Grid	Effort	Lake Whitefish	Cisco	Lake Trout	Siscowet	Chubs	Rainbow Smelt	Burbot
Trap Net	May	1209	6	2,017	144	46	2	--	--	10
		1307	20	5,607	2	267	21	--	--	106
		1308	18	5,375	4	258	13	--	--	54
		1309	3	666	43	6	--	--	--	8
		All Grids	47	13,665	193	577	36	--	--	178
	June	1208	6	2,054	--	3	--	--	--	7
		1209	44	8,230	612	278	7	--	--	56
		1306	10	471	2	174	40	--	--	20
		1307	33	7,551	21	196	35	--	--	93
		1308	40	14,651	47	315	20	--	--	60
1309		13	2,093	190	29	--	--	--	45	
1310		2	155	4	24	--	--	--	--	
1409		39	14,899	324	15	3	--	--	--	
1410		11	2,180	--	146	4	--	--	3	
All Grids		198	52,286	1,200	1,180	109	--	--	284	
July	1208	6	1,846	3	61	3	--	--	1	
	1209	41	20,581	38	486	16	--	--	20	
	1211	3	740	--	26	3	--	--	--	
	1306	10	2,489	--	398	182	--	--	6	
	1307	25	18,681	10	158	129	--	--	91	
	1308	36	27,030	7	314	116	--	--	38	
	1309	11	4,408	4	116	6	--	--	3	
	1310	23	5,557	--	911	9	--	--	2	
	1409	15	4,005	7	105	6	--	--	2	
	1410	23	4,712	--	295	3	--	--	9	
All Grids	193	90,049	69	2,870	473	--	--	172		
August	1208	6	3,514	4	27	29	--	--	25	
	1209	50	47,293	--	738	120	--	--	42	
	1211	13	5,375	--	11	--	--	--	--	
	1306	10	1,423	--	632	128	--	--	3	
	1307	22	8,654	4	174	154	--	--	66	
	1308	30	26,456	--	535	262	--	--	93	
	1309	11	7,592	2	151	12	--	--	16	
	1310	40	11,679	--	380	7	--	--	9	
	1409	7	1,005	--	111	--	--	--	--	
	1410	13	3,124	--	504	18	--	--	6	
All Grids	202	116,115	10	3,263	730	--	--	260		
September	1208	7	2,307	--	40	10	--	--	34	
	1209	33	28,650	--	271	97	--	--	173	
	1211	10	2,816	--	--	--	--	--	9	
	1306	14	2,508	--	345	85	--	--	20	
	1307	31	3,789	1	189	241	--	--	177	
	1308	44	18,600	2	641	194	--	--	304	
	1309	12	4,998	--	65	10	--	--	30	
	1310	31	9,314	--	52	9	--	--	69	
	1409	6	1,124	--	8	--	--	--	6	
	1410	9	3,770	--	73	5	--	--	45	
All Grids	197	77,876	3	1,685	651	--	--	866		
All Months	1208	25	9,721	7	131	42	--	--	67	
	1209	174	106,771	794	1,820	242	--	--	301	
	1211	26	8,931	--	37	3	--	--	9	
	1306	44	6,891	2	1,549	435	--	--	49	
	1307	131	44,282	37	984	579	--	--	533	
	1308	168	92,111	60	2,063	605	--	--	550	
	1309	50	19,757	239	367	28	--	--	102	
	1310	96	26,705	4	1,367	25	--	--	80	
	1409	67	21,033	331	239	9	--	--	7	
	1410	56	13,786	--	1,018	30	--	--	64	
All Grids	837	349,990	1,475	9,575	1,999	--	--	1,761		

**Table 7. Pound Nets** Total reported state-licensed commercial effort (lifts) and yield of lake whitefish, cisco (lake herring), lake trout, siscowet, chubs, rainbow smelt and burbot from pound nets in Wisconsin waters of Lake Superior during the 2025 calendar year. All yield is expressed in dressed weight except rainbow smelt. See Figure 1 for locations of statistical grids.

Gear	Month	Grid	Effort	Lake Whitefish	Cisco	Lake Trout	Siscowet	Chubs	Rainbow Smelt	Burbot
Pound Net	April	1307	20	--	--	--	--	--	2,047	--
	May	1307	28	--	--	--	--	--	6,780	--
	All Months	1307	48	--	--	--	--	--	8,827	--