

WISCONSIN DEPARTMENT OF NATURAL RESOURCES

LAKE SUPERIOR SUPPLEMENTAL CREEL REPORT 2025

CHRIS ZUNKER and DRAY CARL

DNR Lake Superior Fisheries Management Team

January 15, 2026

Included in this document are supplemental creel statistics for the Wisconsin Department of Natural Resources (DNR) Creel Survey 2025, which provides more detailed breakdowns. Please refer to the DNR Lake Superior Creel Report 2025 for more information and the main text of the report.

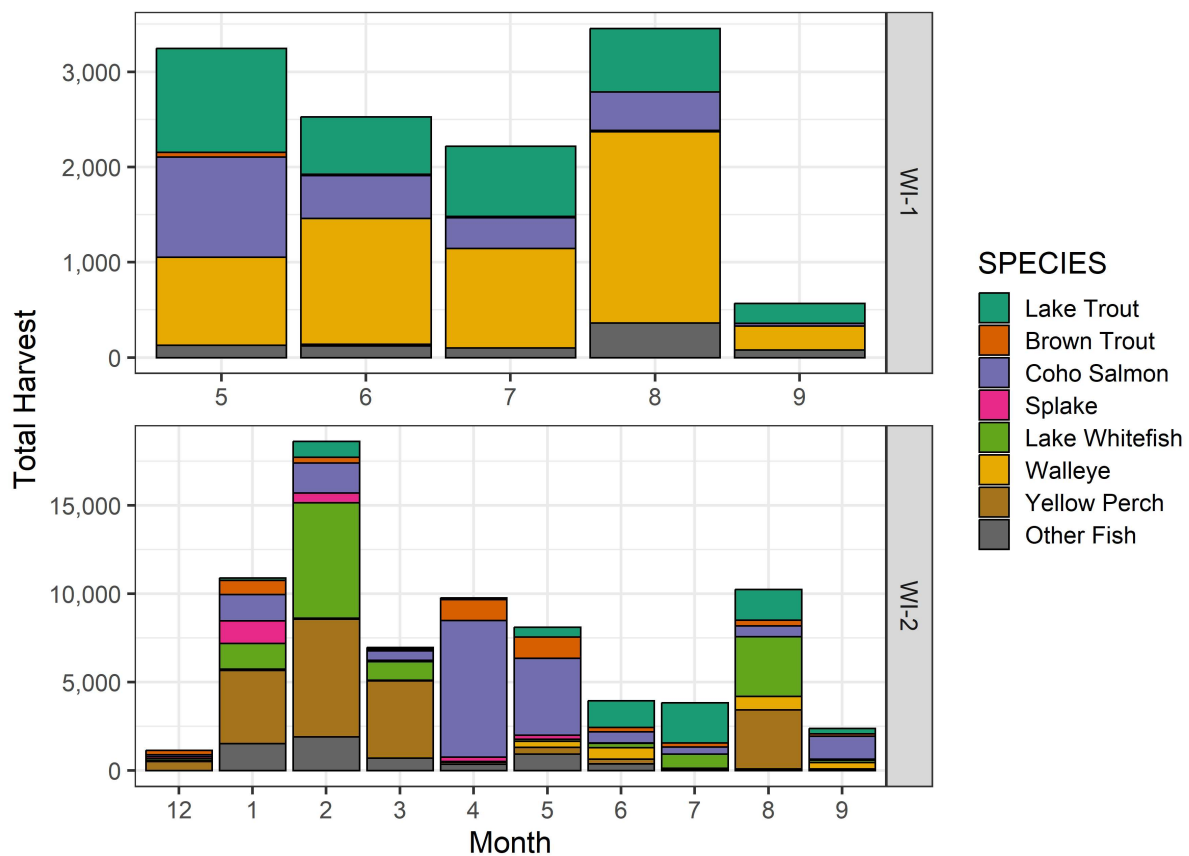


Figure 1. Total estimated harvest of the main seven species in the 2025 DNR Lake Superior Creel Survey within each management unit (WI-1 and WI-2) by month. All other species are represented into the "Other Fish" category.

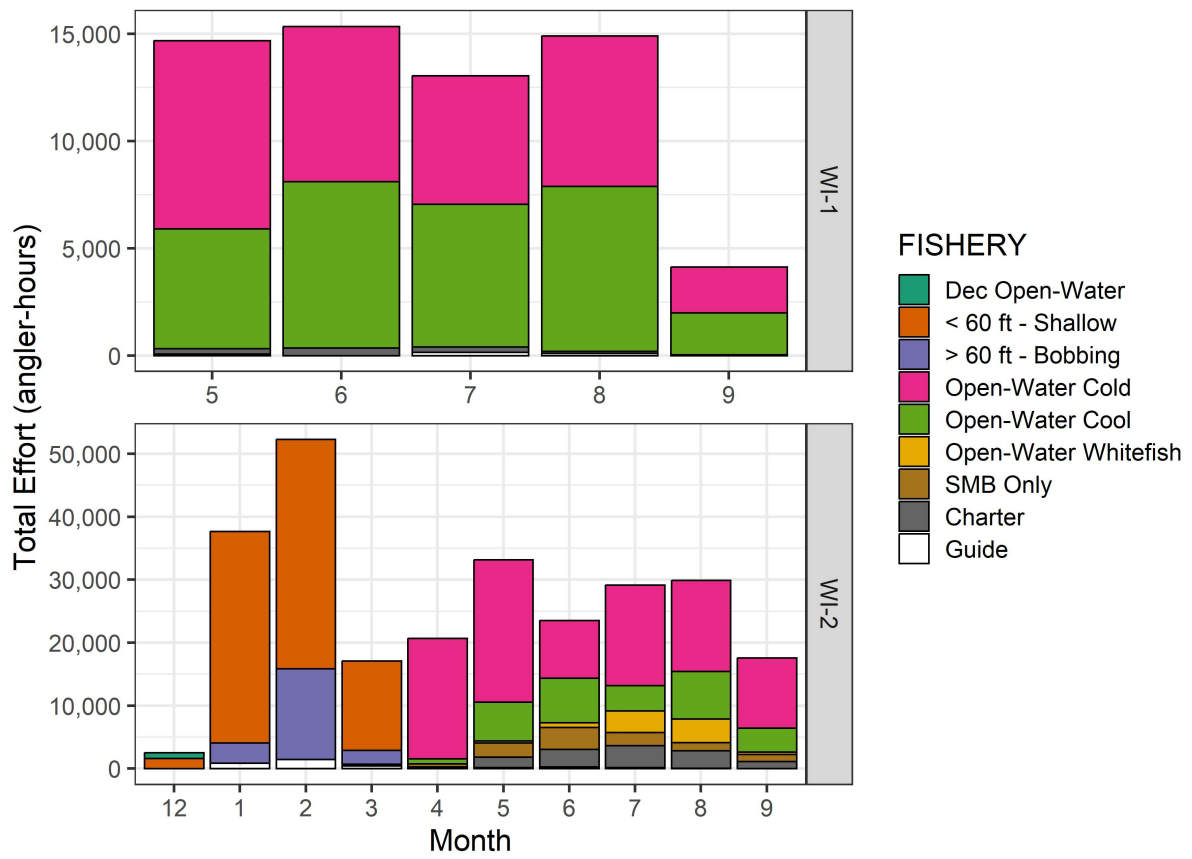


Figure 2. Total estimated fishing effort (angler hours) for each fishery in the 2025 DNR Lake Superior Creel Survey within each management unit (WI-1 and WI-2) by month.

WI-1 Length Frequency 2025

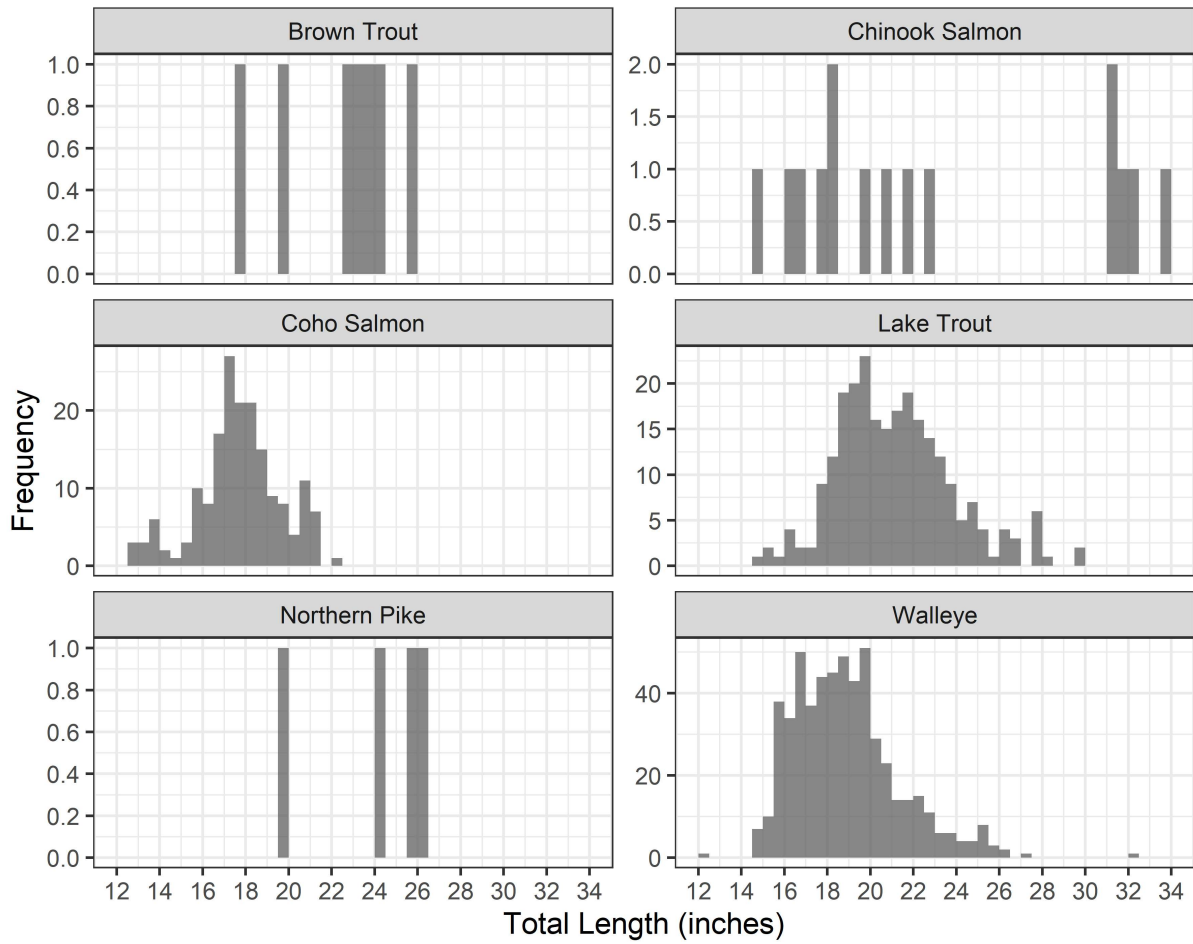


Figure 3. Length distribution of all measured fish (all fisheries) of six common species in the 2025 DNR Lake Superior Creel Survey in management unit WI-1 .

WI-2 Length Frequency 2025

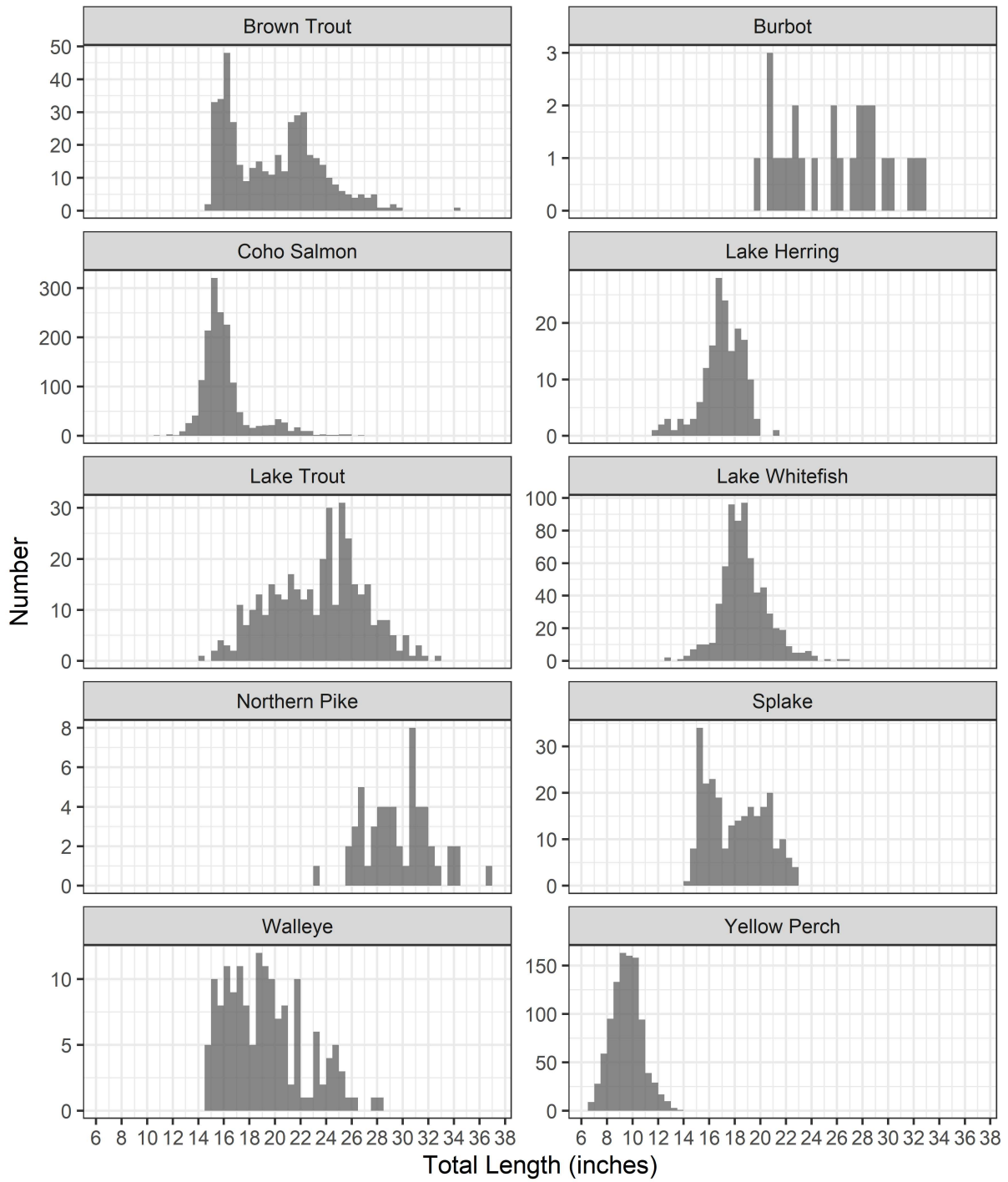


Figure 4. Length distribution of all measured fish (all fisheries) of ten common species in the 2025 DNR Lake Superior Creel Survey in management unit WI-2.

WI-1 Mean Lengths

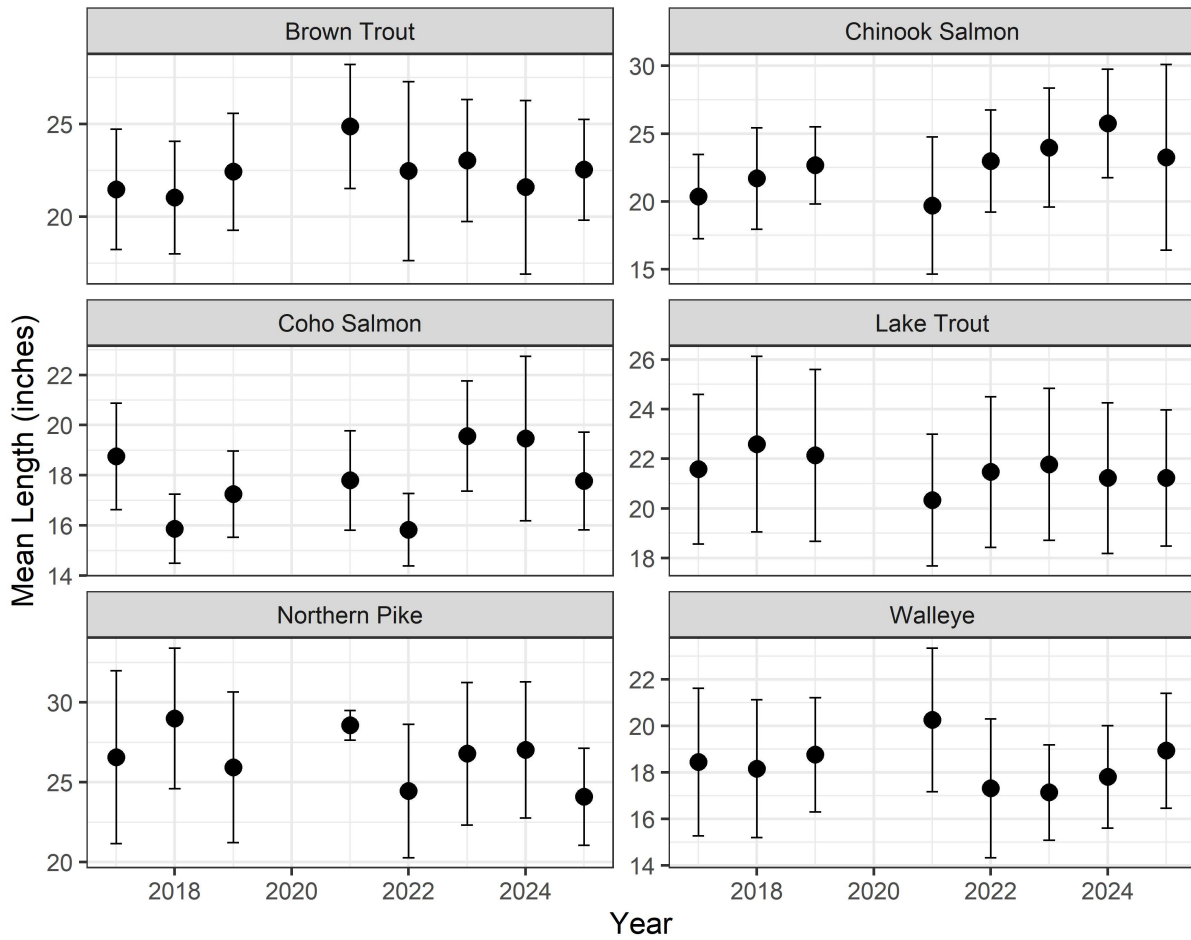


Figure 5. Mean total length of six common species in the DNR Lake Superior Creel Survey in management unit WI-1 from 2017 to 2025. Upper and lower bars represent +/- one standard deviation.

WI-2 Mean Lengths

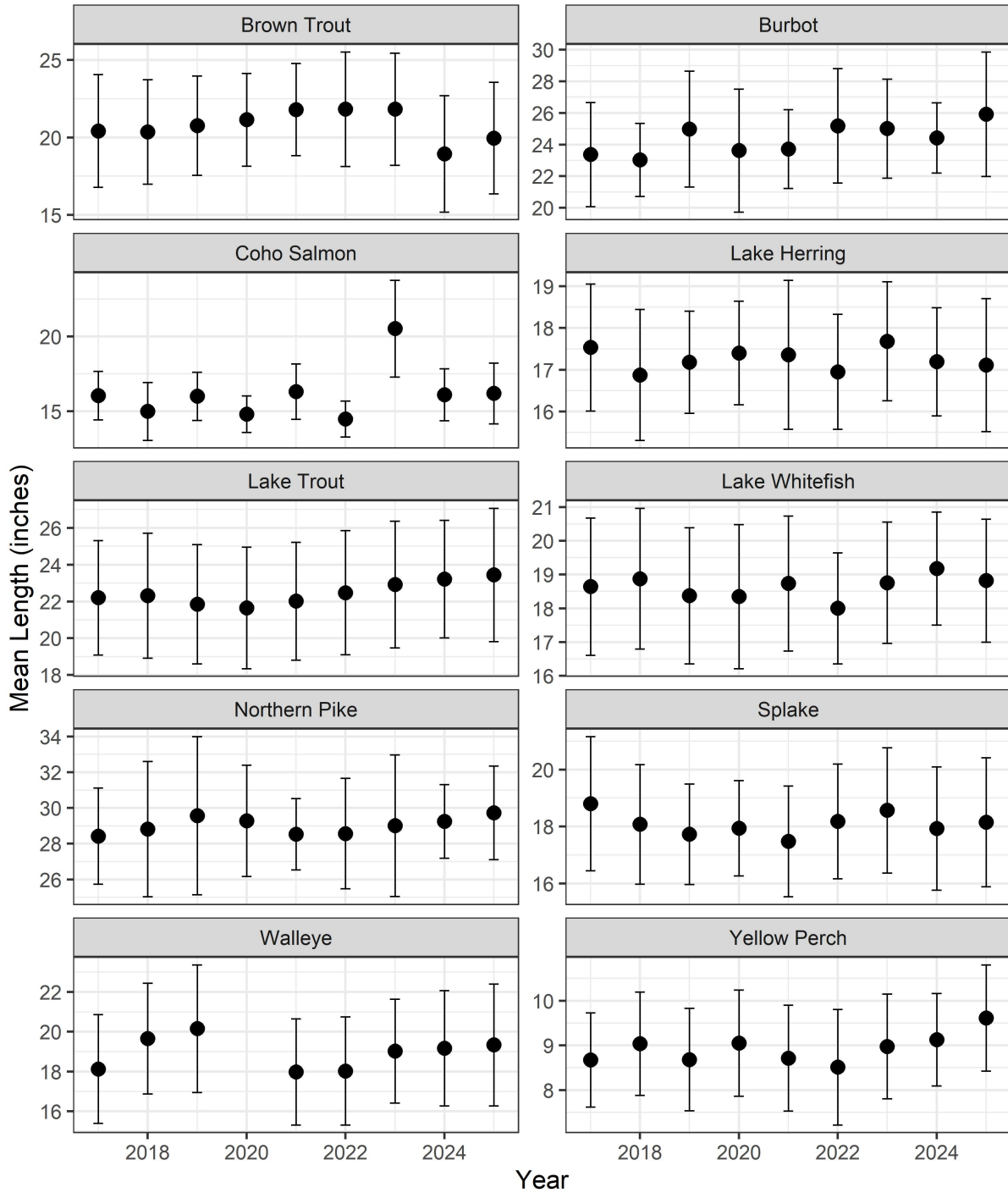


Figure 6. Mean total length of ten common species in the DNR Lake Superior Creel Survey in management unit WI-2 from 2017 to 2025. Upper and lower bars represent +/- one standard deviation.

WI-1 CREEL STATISTICS TABLES

Table 1. Total estimated effort (angler hours) within each fishery sampled in the DNR Lake Superior Creel Survey in management unit WI-1 from 2017 to 2025. Note: Means do not include 2020 effort in WI-1.

FISHERY	2017	2018	2019	2020	2021	2022	2023	2024	2025	Mean
Open-Water Cold	26,523	32,842	37,739	9,134	35,930	38,110	36,217	28,965	31,127	33,432
Open-Water Cool	18,792	10,804	22,753	1,391	25,460	26,405	28,501	36,752	29,628	24,887
Charter	1,056	1,528	3,062	3,900	3,025	1,972	1,328	981	962	1,739
Guide						112	140	207	360	205
Total	46,371	45,174	63,554	14,425	64,415	66,599	66,186	66,905	62,077	60,160

Table 2. Total estimated harvest for the most common species (other species represented in "All Fish") in all fisheries sampled in the DNR Lake Superior Creel Survey in management unit WI-1 from 2017 to 2025. Note: Means exclude 2020 effort and harvest.

Year	Effort (hrs)	All Fish	Brown Trout	Chinook Salmon	Coho Salmon	Lake Herring	Lake Trout	Lake Whitefish	Northern Pike	Rainbow Smelt	Rainbow Trout	Siscowet Lake Trout	Splake	Walleye	Yellow Perch
2017	46,371	5,890	216	73	846	4	2,957		77	4	31	229	1	1,239	107
2018	45,174	7,597	306	305	1,736		3,009	3	41		46	228		1,783	22
2019	63,554	12,656	486	555	2,252		4,102	4	87		48	207		4,524	69
2020	14,425	2,245	32	76	214		1,485		16		30	13		378	
2021	64,415	7,001	98	492	861		3,282	1	75		39	157	6	1,749	9
2022	66,599	8,657	201	214	1,076	31	3,265	12	77		9	69		3,586	12
2023	66,186	13,153	146	191	1,959	8	3,238	3	95		29	68		6,921	34
2024	66,905	12,549	87	73	900	1	2,789		75		11	226	94	7,945	32
2025	62,077	11,825	76	166	2,259		3,305	14	47		33	271	1	5,550	20
Mean	60,160	9,916	202	259	1,486	6	3,243	5	72		31	182	13	4,162	38

Table 3. Harvest rate (fish per angler hour) for the most common species (other species represented in "All Fish") in all fisheries sampled in the DNR Lake Superior Creel Survey in management unit WI-1 from 2017 to 2025. Note: Means exclude 2020 effort and harvest rate.

Year	Effort (hrs)	All Fish	Brown Trout	Chinook Salmon	Coho Salmon	Lake Herring	Lake Trout	Lake Whitefish	Northern Pike	Rainbow Smelt	Rainbow Trout	Siscowet Lake Trout	Splake	Walleye	Yellow Perch
2017	46,371	0.1270	0.0047	0.0016	0.0182	0.0001	0.0638		0.0017	0.0001	0.0007	0.0049		0.0267	0.0023
2018	45,174	0.1682	0.0068	0.0068	0.0384		0.0666	0.0001	0.0009		0.0010	0.0050		0.0395	0.0005
2019	63,554	0.1991	0.0076	0.0087	0.0354		0.0645	0.0001	0.0014		0.0008	0.0033		0.0712	0.0011
2020	14,425	0.1556	0.0022	0.0053	0.0148		0.1029		0.0011		0.0021	0.0009		0.0262	
2021	64,415	0.1087	0.0015	0.0076	0.0134		0.0510		0.0012		0.0006	0.0024	0.0001	0.0272	0.0001
2022	66,599	0.1300	0.0030	0.0032	0.0162	0.0005	0.0490	0.0002	0.0012		0.0001	0.0010		0.0538	0.0002
2023	66,186	0.1987	0.0022	0.0029	0.0296	0.0001	0.0489		0.0014		0.0004	0.0010		0.1046	0.0005
2024	66,905	0.1876	0.0013	0.0011	0.0135		0.0417		0.0011		0.0002	0.0034	0.0014	0.1188	0.0005
2025	62,077	0.1905	0.0012	0.0027	0.0364		0.0532	0.0002	0.0008		0.0005	0.0044		0.0894	0.0003
Mean	60,160	0.1637	0.0035	0.0043	0.0251	0.0001	0.0548	0.0001	0.0012		0.0005	0.0032	0.0002	0.0664	0.0007

Table 4. Total estimated harvest for the most common species (other species represented in "All Fish") in the Open-Water Cold fishery sampled in the DNR Lake Superior Creel Survey in management unit WI-1 from 2017 to 2025. Note: Means exclude 2020 effort and harvest.

Year	Effort (hrs)	All Fish	Brown Trout	Chinook Salmon	Coho Salmon	Lake Trout	Lake Whitefish	Rainbow Trout	Siscowet Lake Trout	Splake	Walleye
2017	26,523	4,218	207	54	790	2,746		29	229		143
2018	32,842	5,426	295	292	1,669	2,511	3	44	228		377
2019	37,739	6,904	423	452	2,016	3,319	4	35	203		418
2020	9,134	1,008	22	12	176	723		26	13		22
2021	35,930	4,403	60	407	725	2,593		30	157		390
2022	38,110	4,745	196	194	988	2,834	10	4	69		408
2023	36,217	5,727	141	108	1,815	2,972	3	27	68		539
2024	28,965	4,386	82	67	879	2,512			226	94	515
2025	31,127	6,407	63	150	2,031	3,156	14	31	271		658
Mean	33,432	5,277	183	216	1,364	2,830	4	25	181	12	431

Table 5. Harvest rate (fish per angler hour) of the most common species (other species represented in "All Fish") in the **Open-Water Cold** fishery sampled in the DNR Lake Superior Creel Survey in management unit WI-1 from 2017 to 2025. Note: Means exclude 2020 effort and harvest rate.

Year	Effort (hrs)	All Fish	Brown Trout	Chinook Salmon	Coho Salmon	Lake Trout	Lake Whitefish	Rainbow Trout	Siscowet Lake Trout	Splake	Walleye
2017	26,523	0.1590	0.0078	0.0020	0.0298	0.1035		0.0011	0.0086		0.0054
2018	32,842	0.1652	0.0090	0.0089	0.0508	0.0765	0.0001	0.0013	0.0069		0.0115
2019	37,739	0.1829	0.0112	0.0120	0.0534	0.0879	0.0001	0.0009	0.0054		0.0111
2020	9,134	0.1104	0.0024	0.0013	0.0193	0.0792		0.0028	0.0014		0.0024
2021	35,930	0.1225	0.0017	0.0113	0.0202	0.0722		0.0008	0.0044		0.0109
2022	38,110	0.1245	0.0051	0.0051	0.0259	0.0744	0.0003	0.0001	0.0018		0.0107
2023	36,217	0.1581	0.0039	0.0030	0.0501	0.0821	0.0001	0.0007	0.0019		0.0149
2024	28,965	0.1514	0.0028	0.0023	0.0303	0.0867			0.0078	0.0032	0.0178
2025	31,127	0.2058	0.0020	0.0048	0.0652	0.1014	0.0004	0.0010	0.0087		0.0211
Mean	33,432	0.1587	0.0054	0.0062	0.0407	0.0856	0.0001	0.0007	0.0057	0.0004	0.0129

Table 6. Total estimated harvest for the most common species (other species represented in "All Fish") in the **Open-Water Cool** fishery sampled in the DNR Lake Superior Creel Survey in management unit WI-1 from 2017 to 2025. Note: Means exclude 2020 effort and harvest.

Year	Effort (hrs)	All Fish	Brown Bullhead	Channel Catfish	Coho Salmon	Crappie	Lake Trout	Northern Pike	Rock Bass	Walleye	Yellow Perch
2017	18,792	1,391	8		15	93		69		1,092	107
2018	10,804	1,603		10	7	96	21	36	4	1,395	19
2019	22,753	4,768		47	59	244	202	62		3,998	69
2020	1,391	277					28			249	
2021	25,460	1,855		57	40	156	181	53		1,323	9
2022	26,405	3,342		6	19	85	58	66		3,082	12
2023	28,501	7,016		62	70	315	52	91	22	6,345	34
2024	36,752	7,803		71		193	31	68		7,350	32
2025	29,628	5,022		24	146	22	5	47		4,747	20
Mean	24,887	4,100	1	35	44	150	69	62	3	3,666	38

Table 7. Harvest rate (fish per angler hour) of the most common species (other species represented in "All Fish") in the **Open-Water Cool** fishery sampled in the DNR Lake Superior Creel Survey in management unit WI-1 from 2017 to 2025. Note: Means exclude 2020 effort and harvest rate.

Year	Effort (hrs)	All Fish	Brown Bullhead	Channel Catfish	Coho Salmon	Crappie	Lake Trout	Northern Pike	Rock Bass	Walleye	Yellow Perch
2017	18,792	0.0740	0.0004		0.0008	0.0049		0.0037		0.0581	0.0057
2018	10,804	0.1484		0.0009	0.0006	0.0089	0.0019	0.0033	0.0004	0.1291	0.0018
2019	22,753	0.2096		0.0021	0.0026	0.0107	0.0089	0.0027		0.1757	0.0030
2020	1,391	0.1991					0.0201			0.1790	
2021	25,460	0.0729		0.0022	0.0016	0.0061	0.0071	0.0021		0.0520	0.0004
2022	26,405	0.1266		0.0002	0.0007	0.0032	0.0022	0.0025		0.1167	0.0005
2023	28,501	0.2462		0.0022	0.0025	0.0111	0.0018	0.0032	0.0008	0.2226	0.0012
2024	36,752	0.2123		0.0019		0.0053	0.0008	0.0019		0.2000	0.0009
2025	29,628	0.1695		0.0008	0.0049	0.0007	0.0002	0.0016		0.1602	0.0007
Mean	24,887	0.1574		0.0013	0.0017	0.0064	0.0029	0.0026	0.0002	0.1393	0.0018

Table 8. Total estimated harvest for the most common species (other species represented in “All Fish”) in the **Charter** fishery from mandatory charter harvest reports in management unit WI-1 from 2017 to 2025.

Year	Effort (hrs)	All Fish	Brown Trout	Chinook Salmon	Coho Salmon	Lake Trout	Lake Whitefish	Rainbow Trout	Splake	Walleye
2017	1,056	281	9	13	41	211		2	1	4
2018	1,528	568	11	6	60	477		2		11
2019	3,062	984	39	65	177	581		13		108
2020	3,900	960	10	64	38	734		4		107
2021	3,025	743	10	76	96	508	1	9	6	36
2022	1,972	542	5	20	69	373	2	5		68
2023	1,328	380	5	76	74	214		2		7
2024	981	284	5	6	21	246		1		4
2025	962	291	2	15	74	144		2		50
Mean	1,979	559	11	38	72	388		4	1	44

Table 9. Harvest rate (fish per angler hour) of the most common species (other species represented in “All Fish”) in the **Charter** fishery from mandatory charter harvest reports in management unit WI-1 from 2017 to 2025.

Year	Effort (hrs)	All Fish	Brown Trout	Chinook Salmon	Coho Salmon	Lake Trout	Lake Whitefish	Rainbow Trout	Splake	Walleye
2017	1,056	0.2661	0.0085	0.0123	0.0388	0.1998		0.0019	0.0009	0.0038
2018	1,528	0.3717	0.0072	0.0039	0.0393	0.3122		0.0013		0.0072
2019	3,062	0.3214	0.0127	0.0212	0.0578	0.1897		0.0042		0.0353
2020	3,900	0.2462	0.0026	0.0164	0.0097	0.1882		0.0010		0.0274
2021	3,025	0.2456	0.0033	0.0251	0.0317	0.1679	0.0003	0.0030	0.0020	0.0119
2022	1,972	0.2748	0.0025	0.0101	0.0350	0.1891	0.0010	0.0025		0.0345
2023	1,328	0.2861	0.0038	0.0572	0.0557	0.1611		0.0015		0.0053
2024	981	0.2895	0.0051	0.0061	0.0214	0.2508		0.0010		0.0041
2025	962	0.3025	0.0021	0.0156	0.0769	0.1497		0.0021		0.0520
Mean	1,979	0.2893	0.0053	0.0187	0.0407	0.2009	0.0001	0.0021	0.0003	0.0202

Table 10. Total estimated harvest for the most common species in the **Guide** fishery from mandatory guide harvest reports in management unit WI-1 from 2022 to 2025.

Year	Effort (hrs)	All Fish	Chinook Salmon	Coho Salmon	Northern Pike	Splake	Walleye
2022	112	28					28
2023	140	30					30
2024	207	76					76
2025	360	105	1	8		1	95
Mean	205	60		2			57

Table 11. Harvest rate (fish per angler hour) of the most common species in the **Guide** fishery from mandatory guide harvest reports in management unit WI-1 from 2022 to 2025.

Year	Effort (hrs)	All Fish	Chinook Salmon	Coho Salmon	Northern Pike	Splake	Walleye
2022	112	0.2500					0.2500
2023	140	0.2143					0.2143
2024	207	0.3671					0.3671
2025	360	0.2917	0.0028	0.0222		0.0028	0.2639
Mean	205	0.2808	0.0007	0.0056		0.0007	0.2738

WI-2 CREEL STATISTICS TABLES

Table 12. Total estimated effort (angler hours) within each fishery sampled in the DNR Lake Superior Creel Survey in management unit WI-2 from 2017 to 2025.

FISHERY	2017	2018	2019	2020	2021	2022	2023	2024	2025	Mean
Dec Open-Water	263	435	1,008	78	1,133	470	159	5,581	943	1,119
< 60 ft - Shallow	55,415	91,145	68,544	91,278	95,085	84,885	67,458	13,823	85,787	72,602
> 60 ft - Bobbing	3,728	22,412	11,215	4,419	18,909	28,942	12,632	337	19,823	13,602
Open-Water Cold	95,348	69,507	79,709	98,700	85,202	80,537	78,676	101,878	92,733	86,921
Open-Water Cool	47,959	44,156	27,083	30,196	27,578	25,515	22,867	21,066	29,371	30,643
Open-Water Whitefish				4,300	6,612	3,775	7,981	5,089	8,641	6,066
SMB Only			14,525	19,273	21,878	15,560	18,543	13,103	10,730	16,230
Charter	5,524	6,964	8,012	8,461	9,383	9,946	10,681	12,907	12,012	9,321
Guide						5,083	4,008	1,134	3,636	3,465
Total	208,237	234,619	210,096	256,705	265,780	254,713	223,005	174,918	263,676	239,969

Table 13. Total estimated harvest for the most common species (other species represented in "All Fish") in all fisheries sampled in the DNR Lake Superior Creel Survey in management unit WI-2 from 2017 to 2025.

Year	Effort (hrs)	All Fish	Brown Trout	Burbot	Chinook Salmon	Coho Salmon	Lake Herring	Lake Trout	Lake Whitefish	Northern Pike	Rainbow Smelt	Rainbow Trout	Siscowet Lake Trout	Splake	Walleye	Yellow Perch
2017	208,237	50,567	3,713	479	55	5,890	391	11,039	7,177	663	4,506	51	98	1,287	2,444	11,809
2018	234,619	60,422	3,934	262	117	4,582	1,058	13,689	13,446	454	5,584	70	138	1,966	1,598	13,107
2019	210,096	53,331	5,036	188	187	7,829	688	11,183	9,917	265	2,012	191	141	2,496	861	12,148
2020	256,705	49,372	4,353	347	85	4,574	900	13,583	9,559	303	3,166	81	46	2,346	1,093	8,969
2021	265,780	63,161	2,780	249	84	9,446	576	12,375	9,748	687	10,744	57	318	3,644	1,675	10,686
2022	254,713	57,736	3,569	1,019	325	7,916	1,028	13,405	12,885	702	3,512	51	337	3,739	1,772	7,457
2023	223,005	50,864	2,555	229	246	4,888	868	11,093	15,211	666	2,615	53	283	2,034	1,837	7,969
2024	174,918	36,826	3,809	72	101	10,790	119	8,943	3,017	778	396	81	117	1,368	1,150	5,368
2025	263,676	75,976	4,765	397	176	18,840	2,188	7,595	13,831	858	1,505	34	32	2,598	2,362	19,827
Mean	232,417	55,362	3,835	360	153	8,306	868	11,434	10,532	597	3,782	74	168	2,386	1,644	10,816

Table 14. Harvest rate (fish per angler hour) for the most common species (other species represented in "All Fish") in all fisheries sampled in the DNR Lake Superior Creel Survey in management unit WI-2 from 2017 to 2025.

Year	Effort (hrs)	All Fish	Brown Trout	Burbot	Chinook Salmon	Coho Salmon	Lake Herring	Lake Trout	Lake Whitefish	Northern Pike	Rainbow Smelt	Rainbow Trout	Siscowet Lake Trout	Splake	Walleye	Yellow Perch
2017	208,237	0.2428	0.0178	0.0023	0.0003	0.0283	0.0019	0.0530	0.0345	0.0032	0.0216	0.0002	0.0005	0.0062	0.0117	0.0567
2018	234,619	0.2575	0.0168	0.0011	0.0005	0.0195	0.0045	0.0583	0.0573	0.0019	0.0238	0.0003	0.0006	0.0084	0.0068	0.0559
2019	210,096	0.2538	0.0240	0.0009	0.0009	0.0373	0.0033	0.0532	0.0472	0.0013	0.0096	0.0009	0.0007	0.0119	0.0041	0.0578
2020	256,705	0.1923	0.0170	0.0014	0.0003	0.0178	0.0035	0.0529	0.0372	0.0012	0.0123	0.0003	0.0002	0.0091	0.0043	0.0349
2021	265,780	0.2376	0.0105	0.0009	0.0003	0.0355	0.0022	0.0466	0.0367	0.0026	0.0404	0.0002	0.0012	0.0137	0.0063	0.0402
2022	254,713	0.2267	0.0140	0.0040	0.0013	0.0311	0.0040	0.0526	0.0506	0.0028	0.0138	0.0002	0.0013	0.0147	0.0070	0.0293
2023	223,005	0.2281	0.0115	0.0010	0.0011	0.0219	0.0039	0.0497	0.0682	0.0030	0.0117	0.0002	0.0013	0.0091	0.0082	0.0357
2024	174,918	0.2105	0.0218	0.0004	0.0006	0.0617	0.0007	0.0511	0.0172	0.0044	0.0023	0.0005	0.0007	0.0078	0.0066	0.0307
2025	263,676	0.2881	0.0181	0.0015	0.0007	0.0715	0.0083	0.0288	0.0525	0.0033	0.0057	0.0001	0.0001	0.0099	0.0090	0.0752
Mean	232,417	0.2375	0.0168	0.0015	0.0007	0.0361	0.0036	0.0496	0.0446	0.0026	0.0157	0.0003	0.0007	0.0101	0.0071	0.0463

Table 15. Total estimated harvest for the most common species (other species represented in "All Fish") in the December Open-Water fishery sampled in the DNR Lake Superior Creel Survey in management unit WI-2 from 2017 to 2025.

Year	Effort (hrs)	All Fish	Brown Trout	Coho Salmon	Lake Trout	Lake Whitefish	Rainbow Trout	Splake	Walleye
2017	263	115	50	4	46		4	12	
2018	435	272	65	95	60	11		38	
2019	1,008	437	254	72	7	34	1	63	
2020	78	33	11	8		3		6	
2021	1,133	529	152	254	33			86	2
2022	470	234	17	131	9	3		74	
2023	159	22	16	3				3	
2024	5,581	2,522	676	1,501	27	62		237	
2025	943	513	247	98		85		83	
Mean	1,119	520	165	241	20	22	1	67	

Table 16. Harvest rate (fish per angler hour) of the most common species (other species represented in "All Fish") in the December Open-Water fishery sampled in the DNR Lake Superior Creel Survey in management unit WI-2 from 2017 to 2025.

Year	Effort (hrs)	All Fish	Brown Trout	Coho Salmon	Lake Trout	Lake Whitefish	Rainbow Trout	Splake	Walleye
2017	263	0.4373	0.1901	0.0152	0.1749		0.0152	0.0456	
2018	435	0.6253	0.1494	0.2184	0.1379	0.0253		0.0874	
2019	1,008	0.4335	0.2520	0.0714	0.0069	0.0337	0.0010	0.0625	
2020	78	0.4231	0.1410	0.1026		0.0385		0.0769	
2021	1,133	0.4669	0.1342	0.2242	0.0291			0.0759	0.0018
2022	470	0.4979	0.0362	0.2787	0.0191	0.0064		0.1574	
2023	159	0.1384	0.1006	0.0189				0.0189	
2024	5,581	0.4519	0.1211	0.2689	0.0048	0.0111		0.0425	
2025	943	0.5440	0.2619	0.1039		0.0901		0.0880	
Mean	1,119	0.4465	0.1541	0.1447	0.0414	0.0228	0.0018	0.0728	0.0002

Table 17. Total estimated harvest for the most common species (other species represented in "All Fish") in the Ice < 60 ft - Shallow fishery sampled in the DNR Lake Superior Creel Survey in management unit WI-2 from 2017 to 2025.

Year	Effort (hrs)	All Fish	Brown Trout	Burbot	Coho Salmon	Lake Herring	Lake Trout	Lake Whitefish	Northern Pike	Rainbow Smelt	Splake	Walleye	Yellow Perch
2017	55,415	25,306	926	395	1,041	325	302	5,516	177	4,492	757	169	11,087
2018	91,145	33,837	1,980	243	1,772	870	569	8,711	261	5,579	1,459	108	12,106
2019	68,544	21,589	1,359	172	1,044	640	395	3,292	113	2,012	1,664	24	10,740
2020	91,278	24,137	1,986	337	597	835	1,054	6,035	117	3,166	1,796	7	8,251
2021	95,085	34,236	1,143	161	4,275	504	460	3,409	303	10,744	3,026	109	10,092
2022	84,885	27,708	2,036	687	3,230	820	309	7,035	195	3,491	2,877	151	6,817
2023	67,458	16,256	748	166	190	638	124	3,191	198	2,615	1,320	120	6,910
2024	13,823	5,628	119	43	143	35		129	70	392	277	78	4,301
2025	85,787	28,039	1,034	114	3,311	1,595	150	2,731	256	1,473	1,713	199	15,282
Mean	72,602	24,082	1,259	258	1,734	696	374	4,450	188	3,774	1,654	107	9,510

Table 18. Harvest rate (fish per angler hour) of the most common species (other species represented in "All Fish") in the Ice < 60 ft - Shallow fishery sampled in the DNR Lake Superior Creel Survey in management unit WI-2 from 2017 to 2025.

Year	Effort (hrs)	All Fish	Brown Trout	Burbot	Coho Salmon	Lake Herring	Lake Trout	Lake Whitefish	Northern Pike	Rainbow Smelt	Splake	Walleye	Yellow Perch
2017	55,415	0.4567	0.0167	0.0071	0.0188	0.0059	0.0054	0.0995	0.0032	0.0811	0.0137	0.0030	0.2001
2018	91,145	0.3712	0.0217	0.0027	0.0194	0.0095	0.0062	0.0956	0.0029	0.0612	0.0160	0.0012	0.1328
2019	68,544	0.3150	0.0198	0.0025	0.0152	0.0093	0.0058	0.0480	0.0016	0.0294	0.0243	0.0004	0.1567
2020	91,278	0.2644	0.0218	0.0037	0.0065	0.0091	0.0115	0.0661	0.0013	0.0347	0.0197	0.0001	0.0904
2021	95,085	0.3601	0.0120	0.0017	0.0450	0.0053	0.0048	0.0359	0.0032	0.1130	0.0318	0.0011	0.1061
2022	84,885	0.3264	0.0240	0.0081	0.0381	0.0097	0.0036	0.0829	0.0023	0.0411	0.0339	0.0018	0.0803
2023	67,458	0.2410	0.0111	0.0025	0.0028	0.0095	0.0018	0.0473	0.0029	0.0388	0.0196	0.0018	0.1024
2024	13,823	0.4071	0.0086	0.0031	0.0103	0.0025		0.0093	0.0051	0.0284	0.0200	0.0056	0.3111
2025	85,787	0.3268	0.0121	0.0013	0.0386	0.0186	0.0017	0.0318	0.0030	0.0172	0.0200	0.0023	0.1781
Mean	72,602	0.3410	0.0164	0.0036	0.0216	0.0088	0.0045	0.0574	0.0028	0.0494	0.0221	0.0019	0.1509

Table 19. Total estimated harvest for the most common species (other species represented in "All Fish") in the Ice > 60 ft - Bobbing fishery sampled in the DNR Lake Superior Creel Survey in management unit WI-2 from 2017 to 2025.

Year	Effort (hrs)	All Fish	Brown Trout	Coho Salmon	Lake Herring	Lake Trout	Lake Whitefish	Siscowet Lake Trout	Splake
2017	3,728	1,544	31	87	52	174	1,074		27
2018	22,412	6,753	46	53	173	1,911	4,425	50	72
2019	11,215	3,199	17	16	42	1,188	1,865	38	12
2020	4,419	809	55	14	39	558	99	4	31
2021	18,909	4,173	83	59	45	1,631	2,191	7	93
2022	28,942	5,549	46	100	92	1,586	3,308	164	47
2023	12,632	5,365	72	15	77	675	4,384	14	44
2024	337	115	4	61	11		17		8
2025	19,823	7,492	91	247	441	855	5,343		183
Mean	13,602	3,889	49	72	108	953	2,523	31	57

Table 20. Harvest rate (fish per angler hour) of the most common species (other species represented in "All Fish") in the Ice > 60 ft - Bobbing fishery sampled in the DNR Lake Superior Creel Survey in management unit WI-2 from 2017 to 2025.

Year	Effort (hrs)	All Fish	Brown Trout	Coho Salmon	Lake Herring	Lake Trout	Lake Whitefish	Siscowet Lake Trout	Splake
2017	3,728	0.4142	0.0083	0.0233	0.0139	0.0467	0.2881		0.0072
2018	22,412	0.3013	0.0021	0.0024	0.0077	0.0853	0.1974	0.0022	0.0032
2019	11,215	0.2852	0.0015	0.0014	0.0037	0.1059	0.1663	0.0034	0.0011
2020	4,419	0.1831	0.0124	0.0032	0.0088	0.1263	0.0224	0.0009	0.0070
2021	18,909	0.2207	0.0044	0.0031	0.0024	0.0863	0.1159	0.0004	0.0049
2022	28,942	0.1917	0.0016	0.0035	0.0032	0.0548	0.1143	0.0057	0.0016
2023	12,632	0.4247	0.0057	0.0012	0.0061	0.0534	0.3471	0.0011	0.0035
2024	337	0.3412	0.0119	0.1810	0.0326		0.0504		0.0237
2025	19,823	0.3779	0.0046	0.0125	0.0222	0.0431	0.2695		0.0092
Mean	13,602	0.3044	0.0058	0.0257	0.0112	0.0669	0.1746	0.0015	0.0068

Table 21. Total estimated harvest for the most common species (other species represented in "All Fish") in the Open-Water Cold fishery sampled in the DNR Lake Superior Creel Survey in management unit WI-2 from 2017 to 2025.

Year	Effort (hrs)	All Fish	Brown Trout	Chinook Salmon	Coho Salmon	Lake Trout	Lake Whitefish	Rainbow Trout	Siscowet Lake Trout	Splake	Walleye
2017	95,348	17,422	2,439	50	4,476	9,232	587	28	98	461	6
2018	69,507	13,973	1,511	81	2,371	9,230	231	60	83	337	
2019	79,709	21,798	3,015	161	5,798	7,627	3,977	160	94	620	150
2020	98,700	16,028	2,163	73	3,821	9,290	171	59	11	449	4
2021	85,202	14,667	1,155	77	4,398	8,174	5	43	311	367	
2022	80,537	15,111	1,225	308	3,945	8,704	54	42	107	545	54
2023	78,676	14,849	1,450	221	4,310	7,658	137	45	269	503	43
2024	101,878	18,235	2,468	89	8,204	5,925	104	77	117	729	218
2025	92,733	21,874	2,780	144	13,765	4,234	31	32	32	480	37
Mean	86,921	17,106	2,023	134	5,676	7,786	589	61	125	499	57

Table 22. Harvest rate (fish per angler hour) of the most common species (other species represented in "All Fish") in the Open-Water Cold fishery sampled in the DNR Lake Superior Creel Survey in management unit WI-2 from 2017 to 2025.

Year	Effort (hrs)	All Fish	Brown Trout	Chinook Salmon	Coho Salmon	Lake Trout	Lake Whitefish	Rainbow Trout	Siscowet Lake Trout	Splake	Walleye
2017	95,348	0.1827	0.0256	0.0005	0.0469	0.0968	0.0062	0.0003	0.0010	0.0048	0.0001
2018	69,507	0.2010	0.0217	0.0012	0.0341	0.1328	0.0033	0.0009	0.0012	0.0048	
2019	79,709	0.2735	0.0378	0.0020	0.0727	0.0957	0.0499	0.0020	0.0012	0.0078	0.0019
2020	98,700	0.1624	0.0219	0.0007	0.0387	0.0941	0.0017	0.0006	0.0001	0.0045	
2021	85,202	0.1721	0.0136	0.0009	0.0516	0.0959	0.0001	0.0005	0.0037	0.0043	
2022	80,537	0.1876	0.0152	0.0038	0.0490	0.1081	0.0007	0.0005	0.0013	0.0068	0.0007
2023	78,676	0.1887	0.0184	0.0028	0.0548	0.0973	0.0017	0.0006	0.0034	0.0064	0.0005
2024	101,878	0.1790	0.0242	0.0009	0.0805	0.0582	0.0010	0.0008	0.0011	0.0072	0.0021
2025	92,733	0.2359	0.0300	0.0016	0.1484	0.0457	0.0003	0.0003	0.0003	0.0052	0.0004
Mean	86,921	0.1981	0.0232	0.0016	0.0641	0.0916	0.0072	0.0007	0.0015	0.0058	0.0006

Table 23. Total estimated harvest for the most common species (other species represented in "All Fish") in the Open-Water Cool fishery sampled in the DNR Lake Superior Creel Survey in management unit WI-2 from 2017 to 2025.

Year	Effort (hrs)	All Fish	Bluegill	Brown Bullhead	Coho Salmon	Crappie	Lake Trout	Lake Whitefish	Northern Pike	Pumpkinseed Sunfish	Rock Bass	Walleye	Yellow Perch
2017	47,959	4,422							476		855	2,269	710
2018	44,156	2,979	21	144	21		67		139		102	1,488	999
2019	27,083	2,854		37			749		99			661	1,298
2020	30,196	2,120	7	48	7		81		133		30	1,073	679
2021	27,578	2,481					15		286		82	1,535	563
2022	25,515	2,659			29		19		450		10	1,482	585
2023	22,867	3,195			34		19		420		82	1,596	936
2024	21,066	3,034	34			437	38	8	582	9		808	1,029
2025	29,371	7,748	58	598	142	92			565		24	2,093	4,109
Mean	30,643	3,499	13	92	26	59	4	106	350	1	132	1,445	1,212

Table 24. Harvest rate (fish per angler hour) of the most common species (other species represented in "All Fish") in the **Open-Water Cool** fishery sampled in the DNR Lake Superior Creel Survey in management unit WI-2 from 2017 to 2025.

Year	Effort (hrs)	All Fish	Bluegill	Brown Bullhead	Coho Salmon	Crappie	Lake Trout	Lake Whitefish	Northern Pike	Pumpkinseed Sunfish	Rock Bass	Walleye	Yellow Perch
2017	47,959	0.0922							0.0099		0.0178	0.0473	0.0148
2018	44,156	0.0675	0.0005	0.0033	0.0005			0.0015	0.0031		0.0023	0.0337	0.0226
2019	27,083	0.1054		0.0014				0.0277	0.0037			0.0244	0.0479
2020	30,196	0.0702	0.0002	0.0016	0.0002			0.0027	0.0044		0.0010	0.0355	0.0225
2021	27,578	0.0900						0.0005	0.0104		0.0030	0.0557	0.0204
2022	25,515	0.1042			0.0011			0.0007	0.0176		0.0004	0.0581	0.0229
2023	22,867	0.1397			0.0015			0.0008	0.0184		0.0036	0.0698	0.0409
2024	21,066	0.1440	0.0016			0.0207	0.0018	0.0004	0.0276	0.0004		0.0384	0.0488
2025	29,371	0.2638	0.0020	0.0204	0.0048	0.0031			0.0192		0.0008	0.0713	0.1399
Mean	30,643	0.1197	0.0005	0.0030	0.0009	0.0026	0.0002	0.0038	0.0127		0.0032	0.0482	0.0423

Table 25. Total estimated harvest for the most common species (other species represented in "All Fish") in the **Open-Water Whitefish** fishery sampled in the DNR Lake Superior Creel Survey in management unit WI-2 from 2017 to 2025.

Year	Effort (hrs)	All Fish	Brown Trout	Coho Salmon	Lake Trout	Lake Whitefish	Splake
2020	4,300	3,301			95	3,169	18
2021	6,612	4,212	5		43	4,128	22
2022	3,775	2,259			49	2,159	
2023	7,981	6,641		4		6,571	5
2024	5,089	2,751	12	13		2,688	
2025	8,641	4,848	18	83	23	4,674	
Mean	6,066	4,002	6	17	35	3,898	8

Table 26. Harvest rate (fish per angler hour) of the most common species (other species represented in "All Fish") in the **Open-Water Whitefish** fishery sampled in the DNR Lake Superior Creel Survey in management unit WI-2 from 2017 to 2025.

Year	Effort (hrs)	All Fish	Brown Trout	Coho Salmon	Lake Trout	Lake Whitefish	Splake
2020	4,300	0.7677			0.0221	0.7370	0.0042
2021	6,612	0.6370	0.0008		0.0065	0.6243	0.0033
2022	3,775	0.5984			0.0130	0.5719	
2023	7,981	0.8321		0.0005		0.8233	0.0006
2024	5,089	0.5406	0.0024	0.0026		0.5282	
2025	8,641	0.5610	0.0021	0.0096	0.0027	0.5409	
Mean	6,066	0.6561	0.0009	0.0021	0.0074	0.6376	0.0013

Table 27. Total estimated harvest for the most common species (other species represented in "All Fish") in the **Charter** fishery from mandatory charter harvest reports in management unit WI-2 from 2017 to 2025.

Year	Effort (hrs)	All Fish	Brown Trout	Chinook Salmon	Coho Salmon	Lake Trout	Lake Whitefish	Rainbow Trout	Siscowet Lake Trout	Splake	Walleye
2017	5,524	1,758	154	1	282	1,285		4		30	
2018	6,964	2,608	332	19	270	1,919	1	3		60	2
2019	8,012	3,431	381	21	899	1,966		22		137	3
2020	8,461	2,909	131	8	127	2,586	1	5	4	46	1
2021	9,383	2,810	242	7	460	2,034		14		50	1
2022	9,946	3,202	175	17	370	2,534	2	1		99	1
2023	10,681	3,186	221	24	327	2,493		3		98	
2024	12,907	4,435	501	12	862	2,953	1	4		99	
2025	12,012	3,889	458	32	1,114	2,205	2	2		57	2
Mean	9,321	3,136	288	16	523	2,219	1	6		75	1

Table 28. Harvest rate (fish per angler hour) of the most common species (other species represented in "All Fish") in the **Charter** fishery from mandatory charter harvest reports in management unit WI-2 from 2017 to 2025.

Year	Effort (hrs)	All Fish	Brown Trout	Chinook Salmon	Coho Salmon	Lake Trout	Lake Whitefish	Rainbow Trout	Siscowet Lake Trout	Splake	Walleye
2017	5,524	0.3182	0.0279	0.0002	0.0510	0.2326		0.0007		0.0054	
2018	6,964	0.3745	0.0477	0.0027	0.0388	0.2756	0.0001	0.0004		0.0086	0.0003
2019	8,012	0.4282	0.0476	0.0026	0.1122	0.2454		0.0027		0.0171	0.0004
2020	8,461	0.3438	0.0155	0.0009	0.0150	0.3056	0.0001	0.0006	0.0005	0.0054	0.0001
2021	9,383	0.2995	0.0258	0.0007	0.0490	0.2168		0.0015		0.0053	0.0001
2022	9,946	0.3219	0.0176	0.0017	0.0372	0.2548	0.0002	0.0001		0.0100	0.0001
2023	10,681	0.2983	0.0207	0.0022	0.0306	0.2334		0.0003		0.0092	
2024	12,907	0.3436	0.0388	0.0009	0.0668	0.2288	0.0001	0.0003		0.0077	
2025	12,012	0.3238	0.0381	0.0027	0.0927	0.1836	0.0002	0.0002		0.0047	0.0002
Mean	9,321	0.3391	0.0311	0.0016	0.0548	0.2418	0.0001	0.0008	0.0001	0.0082	0.0001

Table 29. Total estimated harvest for the most common species in the **Guide** fishery from mandatory guide harvest reports in management unit WI-2 from 2022 to 2025.

Year	Effort (hrs)	All Fish	Brown Trout	Burbot	Chinook Salmon	Coho Salmon	Lake Herring	Lake Trout	Lake Whitefish	Northern Pike	Rainbow Smelt	Rainbow Trout	Siscowet Lake Trout	Splake	Walleye	Yellow Perch
2022	5,083	987	70	66		111	21	214	305	8			6	97	57	31
2023	4,008	1,262	41	23	1	5	19	143	909	10		1		54	19	37
2024	1,134	106	10			6	5		8	1	4			18	46	8
2025	3,636	1,573	80	10		80	44	128	965	3	21			72	31	138
Mean	3,465	982	50	25		50	22	121	547	6	6		2	60	38	54

Table 30. Harvest rate (fish per angler hour) of the most common species in the **Guide** fishery from mandatory guide harvest reports in management unit WI-2 from 2022 to 2025.

Year	Effort (hrs)	All Fish	Brown Trout	Burbot	Chinook Salmon	Coho Salmon	Lake Herring	Lake Trout	Lake Whitefish	Northern Pike	Rainbow Smelt	Rainbow Trout	Siscowet Lake Trout	Splake	Walleye	Yellow Perch
2022	5,083	0.1942	0.0138	0.0130		0.0218	0.0041	0.0421	0.0600	0.0016			0.0012	0.0191	0.0112	0.0061
2023	4,008	0.3149	0.0102	0.0057	0.0002	0.0012	0.0047	0.0357	0.2268	0.0025		0.0002		0.0135	0.0047	0.0092
2024	1,134	0.0935	0.0088			0.0053	0.0044		0.0071	0.0009	0.0035			0.0159	0.0406	0.0071
2025	3,636	0.4326	0.0220	0.0028		0.0220	0.0121	0.0352	0.2654	0.0008	0.0058			0.0198	0.0085	0.0380
Mean	3,465	0.2588	0.0137	0.0054		0.0126	0.0063	0.0283	0.1398	0.0015	0.0023		0.0003	0.0171	0.0163	0.0151